



FROST Panels/  
DOWN Finline DXF Suspension System

**LEED Credits**

Recycled Content: 70% – 71%

MR				EQ		
Waste Reduction <sup>1</sup>	Recycled Content	Regional Materials <sup>2</sup>	Rapidly Renewable Materials	Low-Emitting Materials	Daylight and Views	Acoustical Performance
●	●	●	●	●	●	●

**Features and Benefits**

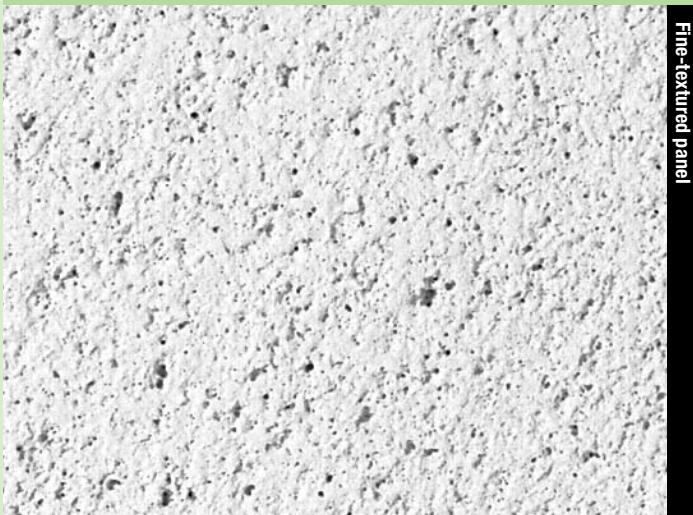
- Fine-textured cast product with durable surface that resists scrapes caused by accessing the ceiling plenum.
- Integral color masks nicks and scratches to enhance lifelong panel appearance.
- Optional FIRECODE™ formulation designed to meet life safety codes.
- Nearly two times more impact resistant than typical fine-textured ceiling panels (ASTM C367 – 2" ball hardness test).

**Applications**

- Conference and lobby areas
- Executive offices
- Hospitality
- Retail stores
- Transportation terminals

**Substrate**

- Cast mineral fiber



Fine-textured panel

Call 888.874.2450 for samples



White

UL Classified																											
Edge	Panel Size	Class <sup>3</sup>	Item No.	NRC	CAC Min.	LR <sup>4</sup>	Color	Grid Options	VOC Emissions	Abuse-Resistant	Recycled Content <sup>5</sup>	Panel Cost															
FROST Panels	SLB 	2'x2'x3/4"	Class A	440	.70	40	.83	White	A	Zero		71%	\$\$														
		Foil-Back																									
		2'x2'x3/4"		415	.55	35	.83	White	A	Zero		70%	\$\$														
		Foil-Back																									
		2'x4'x3/4"	Class A	450	.70	38	.83	White	A	Zero		71%	\$\$														
		Paper-Back																									
	FL 	2'x4'x3/4"	Class A	460	.70	38	.83	White	B, C, D	Zero		71%	\$\$														
		Paper-Back																									
FROST Pedestals   Panels Triple-step scoring	PE/IL 	2'x2'x3/4"	Class A	400	.70	35	.83	White	E	Zero		71%	\$\$\$														
		Paper-Back																									
<b>Legend</b>																											
<b>Zero Emissions (VOC Class)</b> Classified as zero-emitting per standards established by the Collaborative for High-Performance Schools (CHPS), following California Specification 01350 testing methods.																											
<table border="1"> <thead> <tr> <th>A</th> <th>B</th> <th>C</th> <th>D</th> <th>E</th> </tr> </thead> <tbody> <tr> <td>DX®/DXL™</td> <td>CENTRICITEE™ DXT</td> <td>FINELINE® DXF</td> <td>FINELINE® 1/8 DXFF</td> <td>CENTRICITEE DXT</td> </tr> <tr> <td></td> <td></td> <td></td> <td></td> <td></td> </tr> </tbody> </table>													A	B	C	D	E	DX®/DXL™	CENTRICITEE™ DXT	FINELINE® DXF	FINELINE® 1/8 DXFF	CENTRICITEE DXT					
A	B	C	D	E																							
DX®/DXL™	CENTRICITEE™ DXT	FINELINE® DXF	FINELINE® 1/8 DXFF	CENTRICITEE DXT																							
<b>Grid Profile Options</b>																											

**Physical Data/ Footnotes**

**Product literature**  
Data sheet: SC1817

**ASTM E1264 classification**  
Type III, Form 4, Pattern E

**ASTM E84 surface burning characteristics**  
Class A  
Flame spread: 25  
Smoke developed: 50

**Weight**  
1.65-1.7 lb./sq. ft.

**Thermal resistance**  
R-1.7 (Class A)  
R-1.1 (FIRECODE)

**Maximum backloading**  
See Warranty for details.

**Maintenance**

Can be cleaned easily with a soft brush or vacuum.

**Impact resistance**

ASTM C367 – tested to min. 190 lbf. for 1/4" depression by a 2" steel ball.

**Texture**

The manufacturing process for cast ceiling panels creates natural, subtle texture variations, which is a distinguishing feature of these products. Because of potential variances between production dates, we recommend ordering and installing cast products by production lot number.

**Footnotes**

1. Applies when USG acoustical ceilings recycling program is utilized.
2. Dependent on location; see Sustainability selector.
3. Fire-rated items: see UL design details.
4. LR values are shown as averages.
5. For details, see Sustainability selector.