



ASTRO Panels with *CLIMAPLUS* Superior Performance/
DONN CENTRICITEE DXT Suspension System

LEED Credits

Recycled Content: 65% – 69%
CLIMAPLUS Superior Performance for Mold/Mildew

MR				EQ		
Waste Reduction ¹	Recycled Content	Regional Materials ²	Rapidly Renewable Materials	Low-Emitting Materials	Daylight and Views	Acoustical Performance
●	●	●	●	●	●	●

Features and Benefits

- Fine-textured, non-perforated, and non-fissured appearance offers highly desired aesthetic.
- *CLIMAPLUS* 30-year lifetime system warranty to withstand conditions up to 104 °F (40 °C)/95% relative humidity without visible sag when used with a *DONN*® brand suspension system.
- Optional *FIRECODE*™ formulation designed to meet life safety codes.

Applications

- Schools
- Hospitals
- Healthcare facilities
- General offices
- Municipal buildings

Substrate

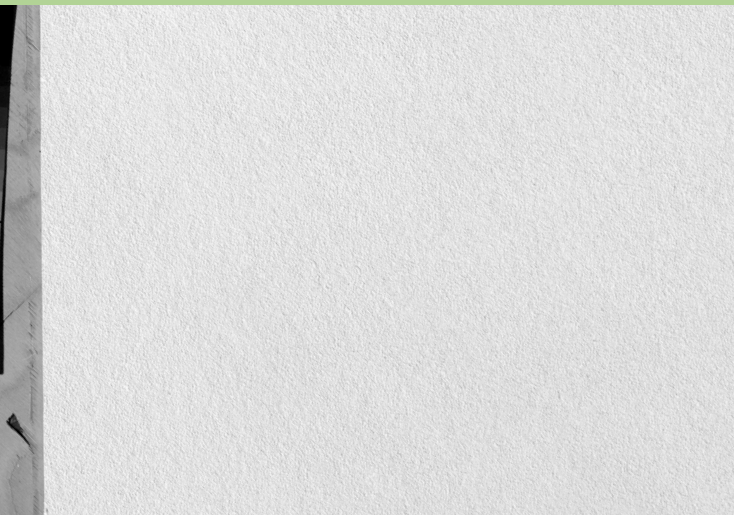
- X-Technology mineral fiber

Call 888.874.2450 for samples



White

Fine-textured panel

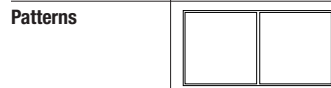


30

Year System Warranty
– No visible sag
– Mold/mildew protection

UL Classified													
Edge	Panel Size	Class ³	Item No.	NRC	CAC Min.	LR ⁴	Color	Grid Options	VOC Emissions	Anti-Mold & Mildew	Recycled Content ⁵	Panel Cost	
ASTRO CLIMAPLUS Panels	SQ 	2'x2'x5/8"	Class A	8221	.55	35	.86	White	A, B, C	Low		65%	\$\$
		2'x2'x3/4"		8122	.50	35	.86	White	A, D	Low		69%	\$\$
		2'x4'x5/8"	Class A	8241	.55	35	.86	White	A, B	Low		65%	\$\$
	SLT 	2'x2'x5/8"	Class A	8223	.55	35	.86	White	E	Low		65%	\$\$
		2'x2'x3/4"		8322	.50	35	.86	White	E	Low		69%	\$\$
		2'x4'x5/8"	Class A	8243	.55	35	.86	White	E	Low		65%	\$\$
	FLB 	2'x2'x5/8"	Class A	8227	.55	35	.86	White	F, H, I	Low		65%	\$\$
		2'x2'x3/4"		8722	.50	35	.86	White	G, J	Low		69%	\$\$
		2'x4'x5/8"	Class A	8247	.55	35	.86	White	F, H, I	Low		65%	\$\$
ASTRO CLIMAPLUS Illusion Two/24 Panels	SLT ⁶ 	2'x4'x3/4"	Class A	8742	.55	35	.86	White	E	Low		65%	\$\$
	ILT ⁷ 	2'x4'x3/4"	Class A	8744	.55	35	.86	White	K	Low		65%	\$\$

Illusion Two/24 The look of 2 x 2 panels



Legend

Low Emissions (VOC Class)

Classified as low-emitting per standards established by the Collaborative for High-Performance Schools (CHPS), following California Specification 01350 testing methods.

CLIMAPLUS Superior Performance⁸

Contains a broad-spectrum antimicrobial treatment on the face and back of the panel that provides guaranteed resistance against the growth of mold/mildew, fungi, yeast, algae, and Gram-positive and Gram-negative odor/stain-causing bacteria.

	A DX ⁹ /DXL™	B DXW™	C ⁹ CENTRICITEE™ DXT	D CENTRICITEE™ DXLT	E DONN DX/DXL	F CENTRICITEE DXT	G CENTRICITEE DXLT	H FINELINE® DXF	I FINELINE® 1/8 DXFF	J FINELINE® DXLF	K CENTRICITEE DXT
Grid Profile Options											

Physical Data/
Footnotes

Product literature
Data sheet: SC2321

ASTM E1264 classification
ASTRO: Type III, Form 1 and 2, Pattern G; ASTRO Illusion: Type III, Form 1, Pattern GK

ASTM E84 surface burning characteristics
Class A
Flame spread: 25
Smoke developed: 50

Weight
0.85 lb./sq. ft. (Class A)
1.10 lb./sq. ft. (Firecode)

Thermal resistance
R-2.0 (Class A 5/8")
R-2.4 (Class A 3/4")
R-2.4 (Firecode 3/4")

Maximum backloading
See Warranty for details.

Maintenance
Can be cleaned easily with a soft brush or vacuum.

Texture
Because the manufacturing process for ASTRO CLIMAPLUS ceiling panels can potentially create subtle texture variations, we recommend ordering and installing this product by production lot number.

Footnotes
1. Applies when USG acoustical ceilings recycling program is utilized.
2. Dependent on location; see Sustainability selector.
3. Fire-rated items: see UL design details.
4. LR values are shown as averages.
5. For details, see Sustainability selector.
6. Panels have a 15/16" routing.
7. Panels have a 9/16" routing.
8. Panel face and back surfaces treated with a patented, broad-spectrum antimicrobial standard formulation that inhibits and retards the growth of mold/mildew, fungi, yeast, and odor/stain-causing Gram-positive and Gram-negative bacteria. For details, see *Ceiling Systems Warranties and Limitations* (SC2102) and *CLIMAPLUS Ceilings Certification of Performance* (SC2451).
9. Maximum 2'x2' with SQ Edge panels.

