

XPanel Solutions

With its introduction in 1998, Crestron e-Control revolutionized the control system industry and quickly established itself as the standard for IP-based control. Continuing its thrust as the leader in control system innovation, Crestron pushed the capabilities of e-Control to the next level with the development of e-Control 2. Utilizing a Microsoft[®] COM/ActiveX[™] foundation, e-Control 2 provides a fully transformable platform through the Crestron VT Pro-e GUI design software. The result is a suite of inspired solutions called XPanel.

Within VT Pro-e, Crestron touchpanel GUI design software, there are four XPanel options: XPanel EXE, XPanel IE, XPanel PDA and XPanel Emulator. All are compatible with any Ethernet-equipped 2-Series control system, which support DHCP/DNS and SSL (Secure Sockets Layer) for the ultimate integration of IT and AV.

XPanel IE

XPanel IE provides Web browser based control using ActiveX rather than Java to attain true touchpanel behavior. XPanel IE Web pages are hosted on a 2-Series control system allowing control on the fly from any connected PC simply by launching a browser and entering the IP address (or URL) of the control system.

XPanel IE files are created just like touchpanel files using the Crestron VisionTools Pro-e GUI design software. Touchpanel files can be converted directly to XPanel IE in one easy step. The look and function of touchpanel files created in VT Pro-e are replicated precisely in XPanel IE. Even subpages, multi-mode buttons, animations, object effects, transparencies and fonts appear and behave identically to those on an Isys[®] touchpanel. For the end user, this means a consistent control experience whether using the system touchpanel or the Web browser on a remote computer.

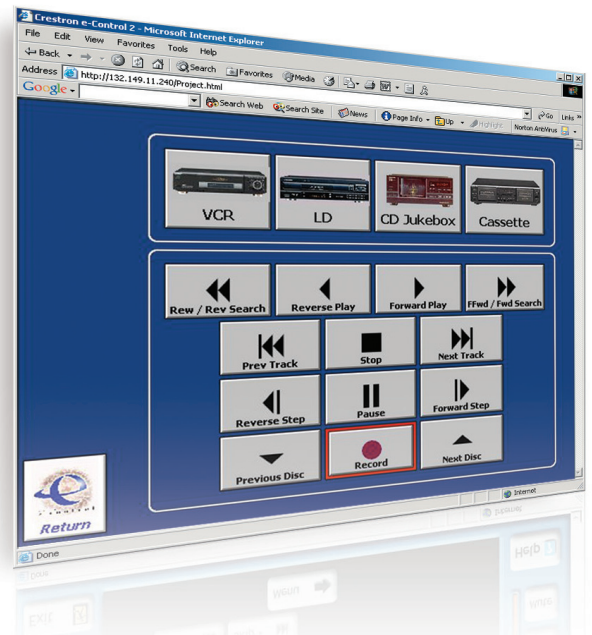
XPanel IE is designed for speed, employing embedded "Smart Loading" technology. When a computer connects to the control system Web server for the first time, the complete XPanel IE project is downloaded and stored in the computer's cache memory. All subsequent connections are resultantly instantaneous. XPanel IE files are not lost when the temporary Internet files folder is cleared. Smart loading also checks for updates upon each new connection, and downloads new files only when an update is found.

All ActiveX objects downloaded as part of an XPanel IE Web page are digitally signed for security. And like all e-Control applications, XPanel IE is fully compliant with firewalls and other common network security measures.

XPanel EXE

XPanel EXE provides ultra fast and secure control through an executable application rather than Web pages. The runtime executable is loaded directly onto one or more specific computers and runs from the desktop or start menu. Just like XPanel IE, XPanel EXE files are created using the Crestron VT Pro-e GUI design software so they look and function just like an Isys touchpanel. Since the executable resides and runs on the controlling PC, there is no load time so all functions are instantaneous. Even over the Internet, XPanel EXE offers the fastest IP-based control solution available.

XPanel EXE eliminates the hassles associated with Web browsers, eliminating any chance of accidentally surfing away from the critical control screens or being interrupted by pop-ups. The "Always On Top" option prevents the XPanel EXE GUI from getting lost behind other applications.



In addition to SSL and password protection, XPanel EXE also provides an extra level of security since only those computers with the unique custom executable can access and control the system. If necessary to support mobile usage, the executable file may be hosted for download by authorized users from a secure server.

XPanel PDA

For the ultimate in portable IP-based control, XPanel PDA brings the power of e-Control 2 to any Pocket PCTM2002 device. XPanel PDA delivers benefits similar to XPanel EXE on smaller PDA and Tablet PC formats.

XPanel Emulator

XPanel Emulator allows the control system programmer to easily generate an executable file that emulates the entire flow and function of an Isys touchpanel or e-Control 2 XPanel project right on any Windows PC. Button presses, page flips, subpages, and feedback can all be simulated to provide a complete real-time demonstration, fully navigable by any untrained user. There's no special "viewer" software required. An XPanel Emulator file can be delivered through email and run easily from the Windows desktop, providing a convenient instrument for sales demonstrations, consultant submittals, user training, and final signoffs.

System Requirements

Windows NT/2000/XP or XP Tablet PC Edition

Microsoft Internet Explorer

XPanel PDA requires Pocket PC 2002 device with Intel[®] StrongARM[™] or XScale[™] processor