

ARCHITECTURAL PRODUCTS GROUP

The **Architectural Products Group** consists of aesthetically pleasing, pre-finished connectors and innovative concealed joist ties designed for exposed wood applications. These connectors provide structural performance and, at the same time, add a unique appearance feature to a project. Refer to Simpson Strong-Tie® C-APG catalog.

• ARCHITECTURAL FINISHES

Eliminate time consuming prep work and costly field painting. Available finishes include textured flat black powder-coat, gray paint and hot-dip galvanized coating.

• AVAILABILITY

Select products are in stock and readily available. Contact Simpson Strong-Tie for product availability and lead times for non-stocked items.

• PRE-ENGINEERED AND TESTED

Load-rated products are verified to perform to design loads, unlike custom designed and fabricated connectors.

• QUALITY ASSURANCE

No-Equal quality-controlled manufacturing ensures product consistency and high quality.



Products shown in this section come with textured flat black powder-coat unless otherwise noted. Most are also available with a galvanized coating or gray primer. Contact Simpson Strong-Tie for availability.

www.strongtie.com/apg

BP – BEARING PLATES

Bearing Plates give greater bearing surface than standard cut washers, and help distribute the load at these critical connections.

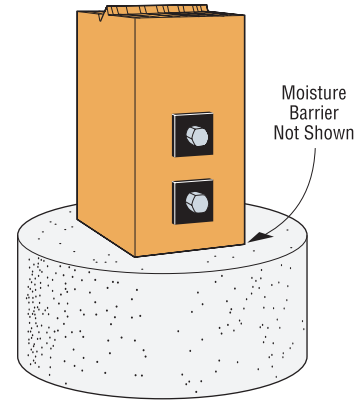
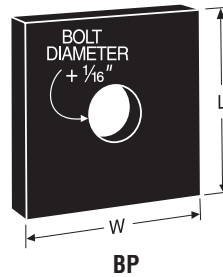
MATERIAL: See table

FINISH: Textured flat black powder-coat

INSTALLATION: See General Notes.

CODES: See page 12 for Code Reference Key Chart.

Model No.	Thickness	Dimensions		Bolt Dia.	Code Ref.
		W	L		
BP½PC	¾	2	2	½	L8, 190
BP¾-2PC	¾	2	2	¾	190
BP¾PC	¼	2½	2½	¾	L8
BP¾PC	¼	2¾	2¾	¾	
BP¾PC	¾	3	3	¾	
BP¾PC	¾	3	3	¾	
BP1PC	¾	3½	3½	1	



Typical BP Installation

SPECIAL ORDER PLATES

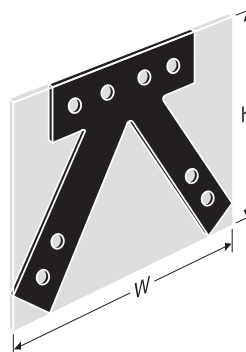
Simpson Strong-Tie can make a variety of flat and bent steel shapes, which include gusset plates for heavy timber trusses, custom ornamental shapes and retaining plates.

MATERIAL: 3 gauge maximum

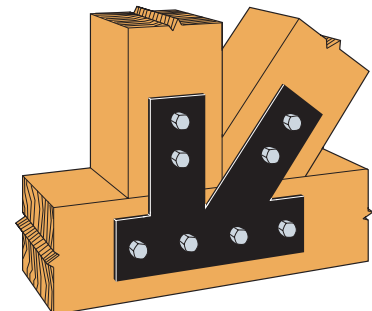
FINISH: Galvanized, textured powder-coated flat black, Simpson Strong-Tie® gray paint, stainless steel. Contact Simpson Strong-Tie for availability.

TO OBTAIN A QUOTE:

- Supply a CAD drawing in .dxf format complete with plate dimensions, hole diameter and locations, steel thickness, desired finish (*Simpson Strong-Tie Gray Paint, Black Powder-Coat, HDG or raw steel*).
- Total plate shape and size up to maximum dimensions of 48" x 48" (approx. 1/16" tolerance).
- Simpson Strong-Tie does not provide product engineering or load values for Special Order Plates.
- Contact Simpson Strong-Tie for pricing information.
- Refer to General Notes, note g on page 13 for additional information.



"W" and "H" indicate the envelope size of the steel shape.



Typical Installation (Plate shown has black powder-coat)