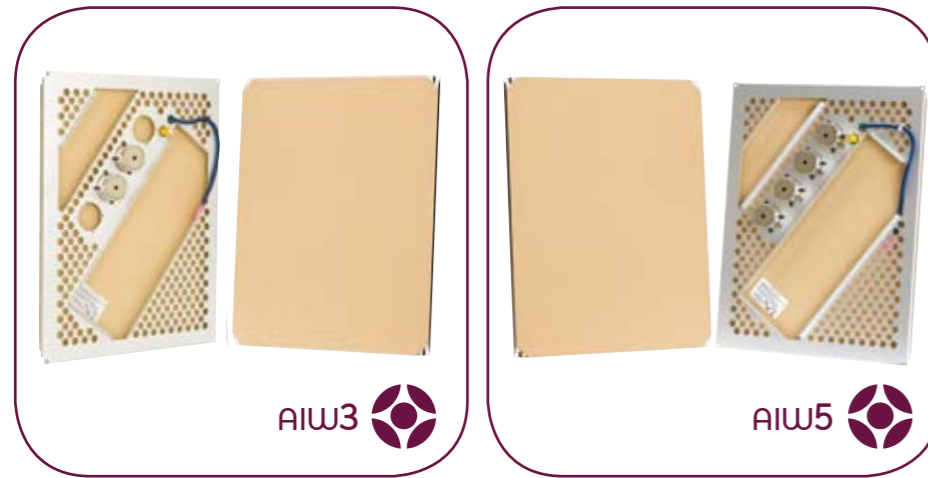


The Product



SPECIFICATIONS	AIW3	AIW5
Nominal impedance	4 ohms	8 ohms
Power handling: Continuous	40w	80w
Sensitivity (with 1.5mm plaster skim)	84dB 1m/1w	87dB 1m/1w
Maximum SPL (with 1.5mm plaster skim)	99dB 1m/40w	105dB 1m/80w
Frequency range	100Hz to 20KHz	100Hz to 20KHz
Dispersion angle	180°	
Electrical connection	Professional butt splice crimp for permanent connection	
Dimensions	450 x 345 x 40 mm	450 x 345 x 40 mm
Product weight	1175g	1810g
Minimum aperture depth	60mm from front of panel	
Fixings provided	Suitable for 12.5mm thick Plasterboard. Please state if other sizes required.	
Box quantity	Pairs	Pairs
High pass filter requirement	100Hz at 24dB/Octave (Minimum external required e.g. Amina AF2 active filter)	

For the very best results, your system electronics should also comprise in-line equalisation to compensate for slight variations in frequency response due to plaster depths and wall types.

The Technology

This remarkable technology is based on a simple yet revolutionary discovery made less than 20 years ago, that we can make very high quality sound reproduction from a vibrating soundboard. Just like a piano, a violin or an acoustic guitar, tiny vibrations across a large area, i.e. the whole body of the instrument, excite air molecules at the surface of the instrument to make the powerful sound we hear. This opens many new opportunities to create loudspeakers that can be disguised as another object, or as in this case, be completely hidden within a wall or ceiling.

Amina Technologies Ltd

Cirrus House, Glebe Road, Huntingdon, Cambridgeshire, England, PE29 7DX
tel +44 1480 354390 fax +44 1480 356564
email inspired@amina.co.uk web www.aminana.co.uk

Amina Technologies NA Ltd

Waverley B2R 1H5, Nova Scotia, CANADA
tel + 1 902 860 0008 fax + 1 902 860 2165
email sales@aminana.com web www.aminana.com



Contact Amina to arrange
Free RIBA CPD Seminars

Plaster In-Wall Loudspeakers for Commercial premises

"sound has never looked so good...."

Amina Technologies is the world's leading manufacturer of vibrational soundboard loudspeaker products for highly discrete and hidden audio solutions for commercial premises and for the home. Designed and manufactured in the UK, these devices are found in some of the world's most prestigious public buildings and some of the most inspiring homes imaginable. Our website has more details of where to find them.

Distributed by:

Warranty
All Amina In-wall loudspeakers are guaranteed against defective workmanship for five years.

Under our policy of continuous improvement, we reserve the right to change specifications without prior notice.
E&OA

Easi-fill is a trademark of British Gypsum Ltd
Amina is a registered trademark of Amina Technologies Ltd
SoundUnseen® is a registered trademark of Amina Technologies Ltd
Document: AIW1 literature Revision 3.0
Copyright, Amina Technologies Ltd, 2006

SoundUnseen® high definition audio reproduction with zero visual impact

"Truly invisible audio solutions for that ultimate **WOW** factor!"

Amina Plaster In-Wall Loudspeakers for Commercial premises



The problem

In many premises, both modern and historic, we have a requirement for sound reproduction to create ambience, a safe environment, to communicate and possibly even to generate revenue.

The frequent functional problem is that conventional loud speakers tend to look very obvious and aesthetically out of place in today's highly designed environments that need to be visually appealing in order to stand out from the crowd.

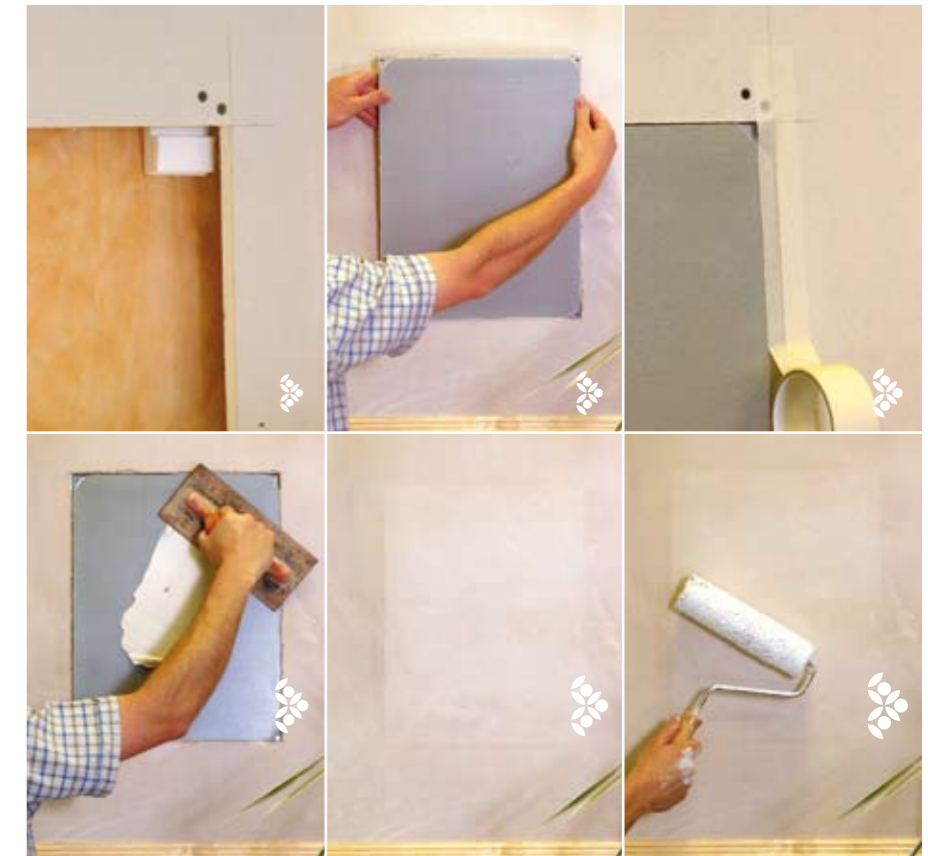
The Solution

Amina true Plaster-in-wall, vibrational soundboard loudspeakers now allows architects, designers and users to create beautiful spaces and have all the technical functionality required of a modern and safe business or public environment.

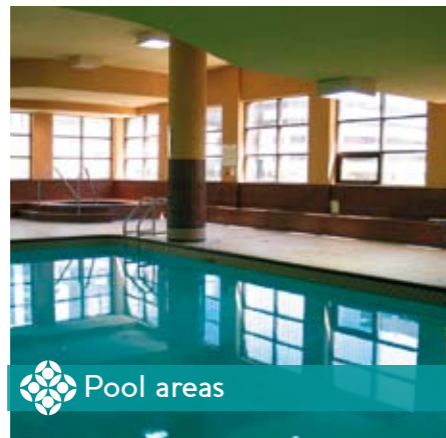
Here are a few examples of the prestigious projects Amina products have been specified in.

Installation

All fixings are provided for very fast installation in plasterboard walls and ceilings.



Restaurants



Pool areas



Heritage sites



Museums & Attractions



Board rooms



Retail sites



Galleries & Exhibition



Leisure & Public areas



Corporate



Hotels



Medical facilities & other clean areas



Broadcast, Film & Theatre

Other uses for the same Amina product:

Bond any of the AIW range to the back of a fibrous suspended ceiling tile to create a highly effective background music and voice announcement system that is completely unseen.

Bond any of the AIW range to the back of a wooden, ply or MDF panel to create fabulous music and voice enhancement systems from furniture or wall/ceiling panelling.

This backbox makes light work of solid wall installations.

All fixings are provided for very fast installation in plasterboard walls and ceilings.

