

# Frost™ *ClimaPlus*™ High-NRC/High-CAC



10

Year Availability  
484, 488, 489



Frost Panels with *CLIMAPlus* Superior Performance  
DOWN FINELINE 1/8 DXFF Suspension System

### LEED Credits

Recycled Content: 71%  
Rapidly Renewable Materials: 12%  
*CLIMAPlus* Superior Performance for Mold/Mildew

MR				EQ		
Waste Reduction <sup>1</sup>	Recycled Content	Regional Materials <sup>2</sup>	Rapidly Renewable Materials	Low-Emitting Materials	Daylight and Views	Acoustical Performance
●	●	●	●	●	●	●

### Features and Benefits

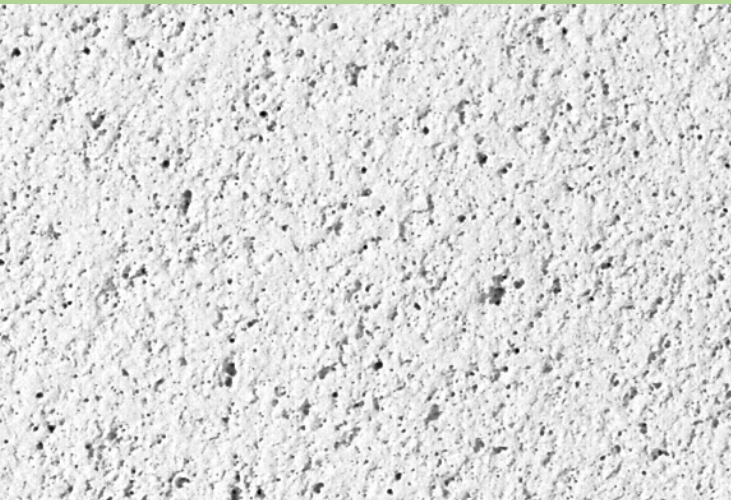
- Single ceiling panel solution with an excellent combination of noise reduction (NRC-.75) and sound attenuation (CAC-40) for use in mixed (open plan/closed plan) office design
- Zero VOC emissions exceeds the most stringent air quality standards
- High light-reflective finish (LR-.88) reduces light fixtures and energy use
- Damage resistant panels with integral color help to reduce the overall cost of ownership
- 30-year lifetime system warranty against visible sag, mold, and mildew

### Applications

- Mixed Office Design
- Closed or Open Plan Offices
- Healthcare – HIPPA requirements
- Classrooms - ANSI S12.60 classroom guidelines
- Government Projects – ACOE performance requirements
- Conference and Lobby Areas

### Substrate

- Cast mineral fiber



Fine-textured panel

Call 888 874.2450 for samples



White

# Frost™ ClimaPlus™

## High-NRC/High-CAC

Web Sites: usg.com  
 usgdesignstudio.com  
 sustainableceilings.com  
 seismicceilings.com

Technical Service 800 USG.4YOU

See usg.com for the most up-to-date product information.

**30**  
 Year System Warranty  
 – No visible sag  
 – Mold/mildew protection

UL Classified													
Edge	Panel Size	Class	Item No.	NRC	CAC Min. <sup>3</sup>	LR <sup>4</sup>	Color <sup>5</sup>	Grid Options	VOC Emissions	Anti-Mold & Mildew	Abuse-Resistant	Recycled Content <sup>5</sup>	Panel Cost
<b>Frost CLIMAPLUS High-NRC/ High-CAC Panels</b>	SLB 	2'x2'x7/8" Paper-Back	Class A <b>484</b>	.75	38	.88	White	A	Zero			71%	\$\$
	FL 	2'x2'x7/8" Paper-Back	Class A <b>488</b>	.75	38/40	.88	White	B, C, D	Zero			71%	\$\$
	FLB 	2'x2'x7/8" Paper-Back	Class A <b>489</b>	.75	38/40	.88	White	E, F, G	Zero			71%	\$\$

### Legend

**Zero Emissions (VOC Class)**

Classified as zero-emitting per standards established by the Collaborative for High-Performance Schools (CHPS), following California Specification 01350 testing methods.

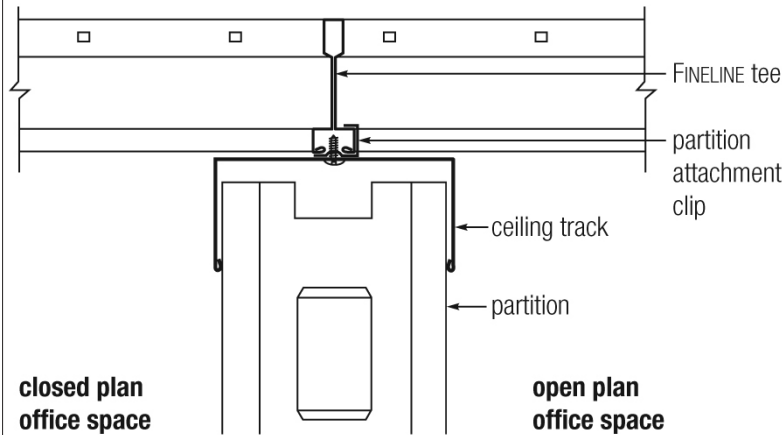
**CLIMAPLUS Superior Performance<sup>5</sup>**

Contains a broad-spectrum antimicrobial treatment on the face and back of the panel that provides guaranteed resistance against the growth of mold and mildew.

A	B	C	D	E	F	G
DX <sup>®</sup> /DXL <sup>™</sup>	CENTRICITEE <sup>™</sup> DXT	FINELINE <sup>®</sup> DXF	FINELINE <sup>®</sup> 1/8 DXFF	CENTRICITEE <sup>™</sup> DXT	FINELINE <sup>®</sup> DXF	FINELINE <sup>®</sup> 1/8 DXFF

### Grid Profile Options

### Fineline Partition Attachment



- Single panel solution for High-NRC (absorption) and High-CAC (privacy) allowing complete flexibility of partition placement.
- Fineline grid allows for easy partition attachment (see detail above) and space reconfiguration
- Provides room-to-room privacy with no need for additional framing (wall partitions run flush to the face of Fineline grid – see detail above)
- System creates a seamless transition between open and closed plan office spaces

### Physical Data/ Footnotes

**Product literature**  
 Data sheet: SC2502

**ASTM E1264 classification**  
 Type III, Form 4, Pattern E

**ASTM E84 surface burning characteristics**  
 Class A  
 Flame spread: 25  
 Smoke developed: 50

**Weight**  
 1.76 lb./sq. ft.

**Thermal resistance**  
 R-1.7

**Maximum backloading**  
 See Warranty for details.

**Maintenance**  
 Can be cleaned easily with a soft brush or vacuum.

**Texture**  
 The manufacturing process for cast ceiling panels creates natural, subtle texture variations, which is a distinguishing feature of these products. Because of potential variances between production dates, we recommend ordering and installing cast products by production lot number.

### Footnotes

1. Applies when USG acoustical ceilings recycling program is utilized.
2. Dependent on location; see Sustainability selector.
3. Item Nos. 488 and 489 achieve 40 CAC when installed with FINELINE or FINELINE 1/8 suspension system.
4. LR values are shown as averages.
5. For details, see Sustainability selector.
6. Panel face and back surfaces treated with a patented, broad-spectrum antimicrobial standard formulation that inhibits and retards the growth of mold and mildew. For details, see *Ceiling Systems*

*Warranties and Limitations (SC2102) and CLIMAPLUS Ceilings Certification of Performance (SC2451).*



Manufactured by USG Interiors, Inc.  
 550 West Adams Street  
 Chicago, IL 60661

The following are trademarks of USG Interiors, Inc. or a related company: CENTRICITEE, CLIMAPLUS, DOWN, DX, DXF, DXFF, DXL, DXT, FINELINE, FROST, USG.

Safety First! Follow good safety/industrial hygiene practices during installation. Wear appropriate personal protective equipment. Read MSDS and literature before specification and installation.

SC2502/10-09  
 © 2009, USG Interiors, Inc.  
 Printed in U.S.A.