

FIRECODE® Brand Acrylic Firestop Spray Sealant Type SA



High-performance, economical, spray applied firestop material.

- Sprayable material remains flexible after it dries.
- Single-component, water-based, acrylic sealant.
- Effective in UL systems for head-of-wall construction joint applications.
- Applies using spray equipment; may also be trowel- or brush-applied.

Description

FIRECODE Brand Acrylic Firestop Spray Sealant (Type SA) is a specially formulated acrylic for head-of-wall applications.

Flexibility Acrylic, elastomeric material remains flexible after drying.

Easy to Apply FIRECODE Brand Acrylic Firestop Spray Sealant (Type SA) is easy to apply using spray equipment, or by trowel or brush.

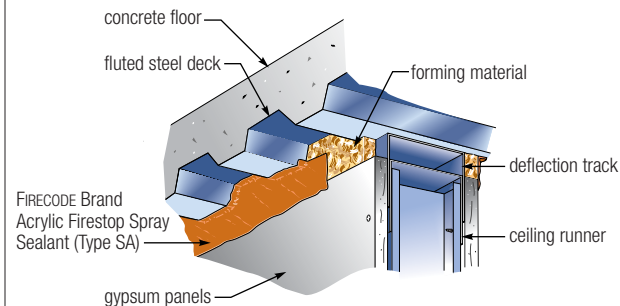
Economical Fast spray application; low installed cost for head-of-wall applications.

Easily Identifiable Applied FIRECODE Brand Acrylic Firestop Spray Sealant (Type SA) is available in rust red, a color which is easily seen and identified by fire marshals.

Paintable Can be painted once fully cured.

UL-Classified FIRECODE Brand Acrylic Firestop Spray Sealant (Type SA) has met all of the conditions of ASTM E1966, UL 2079, ASTM E84 and CAN4-S115 in tests conducted at Underwriters Laboratories. Numerous UL-classified head-of-wall systems are available.

Firestop Sealant



Limitations

1. Not recommended for use in passive fire-containment systems not listed or approved by USG.
2. Do not apply over damp or contaminated surfaces.
3. The USG Fire Stop System in floor/ceiling applications is not designed to support loads from pedestrian or vehicular traffic.

Application

Working pressure shall be minimum 2000 psi with a delivery rate of minimum 1.0 gpm. The spray tip orifice shall be 0.023". A larger tip may be used if the pump can support it. The fluid line is minimum 3/8" i.d. for a length of up to 50'. Equipment should be flushed with water at the end of the day. Airless spray equipment operates at extremely high pressures; protective clothing, gloves and eye protection are required.

Apply FIRECODE Brand Acrylic Firestop Spray Sealant (Type SA) to the required depth using spray equipment, brush or trowel. The application should extend 1/2" onto both the deck and wall surfaces to ensure proper installation of the sealant over the entire joint area. Masking tape can be utilized to create a neat appearance.

Product Data

Material: Single-component, water-based, acrylic formulation.
Color: Rust red.
Storage: Up to one year when stored in unopened containers in dry areas under 80 °F. Protect from freezing.
Application Method: Spray application; spray-application grade may also be trowel- or brush-applied.
Surface Burning Characteristics: Flame spread 15, Smoke developed 0.
Curing Time: Skin time, 2 hrs. at 75 °F/50% R.H.; full cure, one week for 1/2" thickness (cure time depends on thickness).
Application Temperature: 40 °F minimum, 105 °F maximum.
Coverage: 4.5 gal. (17 L) pail contains a volume of approximately 576.0 fl. oz. (17034 mL), which provides approximately 1040 cu. in. of firestop material or a 1/2" sealant bead of 436 lineal feet.
Packaging: 4.5 gal. (17 L) pails.

Submittal Approvals:

Job Name		
Contractor		Date

Trademarks

The following trademarks used herein are owned by United States Gypsum Company: FIRECODE and USG.

Note

Products described here may not be available in all geographic markets. Consult your local sales office or representative for information.

Notice

We shall not be liable for incidental and consequential damages, directly or indirectly sustained, nor for any loss caused by application of these goods not in accordance with current printed instructions or for other than the intended use. Our liability is expressly limited to replacement of defective goods. Any claim shall be deemed waived unless made in writing to us within thirty (30) days from date it was or reasonably should have been discovered.

SAFETY FIRST!

Follow good safety practices. Read material safety data sheets and related literature on products before specification and/or installation.

