



GLACIER Panels/
DONN FINELINE DXFF Suspension System

LEED Credits
Recycled Content: 70% – 71%

MR				EQ		
Waste Reduction ¹	Recycled Content	Regional Materials ²	Rapidly Renewable Materials	Low-Emitting Materials	Daylight and Views	Acoustical Performance
●	●	●	●	●	●	●

Features and Benefits

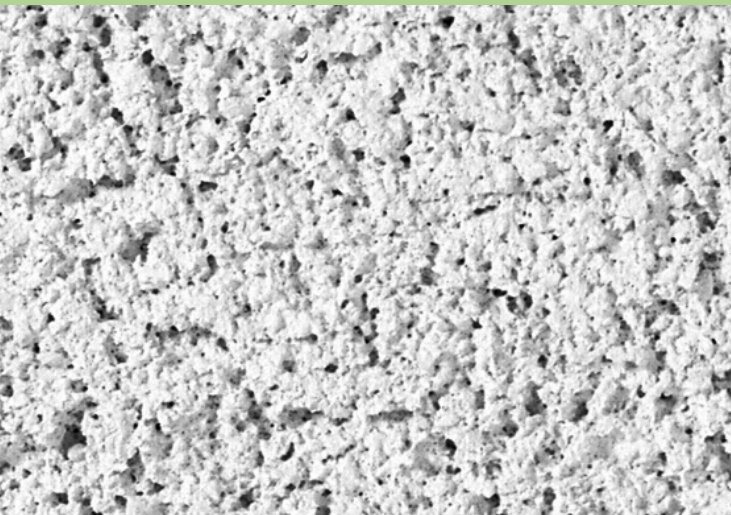
- Heavily textured cast product with durable surface that resists scrapes commonly caused by accessing the ceiling plenum.
- Combine 12"x12" tile with the DONN® brand DX®/DXL™ concealed suspension system to create a monolithic ceiling surface.
- Integral color masks nicks and scratches and enhances lifelong panel appearance.
- Optional FIRECODE™ formulation designed to meet life safety codes.

Applications

- Food courts
- Hospitality
- Libraries
- Restaurants

Substrate

- Cast mineral fiber

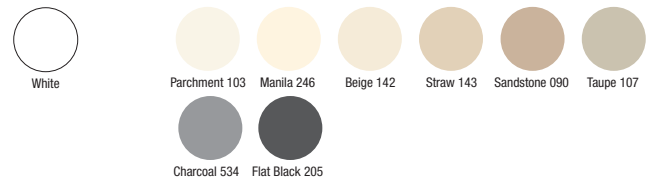


Heavy-textured panel

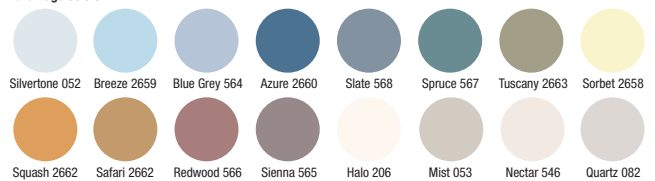
Call 888 874.2450 for color samples

See individual items for color availability.

Standard Colors



Advantage Colors



UL Classified																											
Edge	Panel Size	Class	Item No.	NRC	CAC Min.	LR ³	Color ⁴	Grid Options	VOC Emissions	Abuse-Resistant	Recycled Content ⁵	Panel Cost															
GLACIER Panels	SL 	2'x2'x3/4" Foil-Back	Class A 707	.65	35	.70	White Standard Advantage	A	Zero		71%	\$\$															
		2'x2'x3/4" Foil-Back	 715	.65	35	.70	White	A	Zero		70%	\$\$															
		2'x4'x3/4" Foil-Back	Class A 711	.65	35	.70	White	A	Zero		71%	\$\$															
	FL 	2'x2'x3/4" Foil-Back	Class A 708	.65	35	.70	White Standard Advantage	B, C, D	Zero		71%	\$\$															
GLACIER Tile ^{6,7,8}	SESK 	12"x12"x3/4"	Class A 701	.65	25	.70	White	E	Zero		71%	\$\$\$\$															
Legend																											
Zero Emissions (VOC Class) Classified as zero-emitting per standards established by the Collaborative for High-Performance Schools (CHPS), following California Specification 01350 testing methods.																											
<table border="1"> <thead> <tr> <th>A</th> <th>B</th> <th>C</th> <th>D</th> <th>E</th> </tr> </thead> <tbody> <tr> <td>DX[®]/DXL[™]</td> <td>CENTRICITEE[™] DXT</td> <td>FINELINE[®] DXF</td> <td>FINELINE[®] 1/8 DXFF</td> <td>DX[®]/DXL[™] Concealed</td> </tr> <tr> <td></td> <td></td> <td></td> <td></td> <td></td> </tr> </tbody> </table>													A	B	C	D	E	DX [®] /DXL [™]	CENTRICITEE [™] DXT	FINELINE [®] DXF	FINELINE [®] 1/8 DXFF	DX [®] /DXL [™] Concealed					
A	B	C	D	E																							
DX [®] /DXL [™]	CENTRICITEE [™] DXT	FINELINE [®] DXF	FINELINE [®] 1/8 DXFF	DX [®] /DXL [™] Concealed																							
Grid Profile Options																											

**Physical Data/
Footnotes**

Product literature
Data sheet: SC1819

ASTM E1264 classification
Type III, Form 4, Pattern F

ASTM E84 surface burning characteristics
Class A
Flame spread: 25
Smoke developed: 50

Weight
1.45 lb./sq. ft. (Class A panels and tile)
1.50 lb./sq. ft. (FIRECODE panel)

Thermal resistance
R-1.7 (Class A)
R-1.3 (FIRECODE)

Maximum backloading
See Warranty for details.

Maintenance
Can be cleaned easily with a soft brush or vacuum.

Texture
The manufacturing process for cast ceiling panels creates natural, subtle texture variations, which is a distinguishing feature of these products. Because of potential variances between production dates, we recommend ordering and installing cast products by production lot number.

Footnotes

1. Applies when USG acoustical ceilings recycling program is utilized.
2. Dependent on location; see Sustainability selector.
3. LR values are shown as averages.
4. See Colors selector for more information.
5. For details, see Sustainability selector.
6. Texture appearance will vary based on ceiling height, installation methods, and natural variation of the product.
7. Contact USG for adhesive recommendation for 12" x 12" glue-up applications.
8. Not UL Classified for acoustics.