

Levelrock™ Sound Reduction Mat

SRM-25™

Superior performance sound reduction mat

- Use between floors and units to achieve excellent sound control
- Only 4.6% contact with floor surface
- May contribute towards LEED® credits
- 1-1/4-in. total system thickness minimizes floor transitions
- Ideal for wood-joint, corrugated steel deck and concrete floor systems
- Robinson tested for system durability

Description

LEVELROCK™ SRM-25™ sound reduction mat is a high-performance material that increases IIC and STC ratings in wood-joint and concrete floor systems. This material is packaged in rolls and cuts easily with a utility knife for easy handling and quick installation. LEVELROCK SRM-25 sound reduction mat can improve IIC values by as much as 13 points, depending on the system tested. (IIC values are always a function of the system design.) This sound reduction mat system has also achieved a light-commercial rating on the Robinson floor test (ASTM C627).

SRM-25 sound reduction mat can also contribute to sustainable building practices under the LEED® (Leadership in Energy and Environmental Design) Green Building Rating System, the voluntary, consensus-based standard to support and certify successful green building design, construction and operations. The typical recycled content of SRM-25 sound reduction mat (15%, of which 100% is pre-consumer/post-industrial material) can help a building achieve a LEED rating.

Limitations

1. Do not use in exterior applications.
2. Do not install where continuous exposure to moisture is a possibility (for instance, exterior balconies or large commercial/institutional shower rooms).
3. Do not install when temperature is below 45 °F.

Installation

Perimeter Isolation Strip

1. After the installation of SRM-25 sound reduction mat, install 4-in. x 1/8-in. LEVELROCK™ perimeter isolation strip polyethylene foam at the floor perimeter, including doorframes and around protrusions (e.g., plumbing, electrical, etc.). LEVELROCK perimeter isolation strip isolates the underlayment from the walls, creating an acoustical break to minimize lateral sound transmission.
2. Do not attach LEVELROCK perimeter isolation strip with nails, screws, etc., as mechanical fasteners conduct impact sound, eliminating acoustical isolation.
3. Refer to drawings for installation details.

LEVELROCK SRM-25 Sound Reduction Mat

1. Cut each section of mat to the full length of the room so the number of seams is minimized. Abut the field cut edge of the SRM-25 sound reduction mat against the wall. The perimeter isolation strip should be creased to form an “L.” The longer portion should be placed against the wall; the shorter portion should lie against the sound mat.
2. Lay the mat directly over the subfloor with the flat fabric side facing up.
3. Butt the edges of adjoining lengths of mat together and tape joints with a high-quality duct tape, such as Nashua® 357, Shurtape® PC721 or equivalent. Do not use economy grades of duct tape, as the adhesive qualities are not sufficient to hold a bond when LEVELROCK floor underlayment is applied. A quality spray adhesive may also be used to glue the flap to the adjoining sound mat.
4. SRM-25 sound reduction mat is free-floating. Do not attach it to the subfloor with nails, screws, staples, glue or other types of attachments, as these will eliminate the acoustical isolation.
5. Ensure that the sound mat lies flat against the subfloor.

**LEVELROCK
Floor Underlayment**

1. To ensure good acoustical performance, it is imperative that the LEVELROCK floor underlayment is not allowed to flow under the perimeter isolation strip or get behind it in any way. Overlap and tape all vertical joints of the perimeter isolation strip to prevent leakage.
2. In the portion of the perimeter isolation strip that is placed on the sound mat, make sure there are no kinks or areas that could allow the LEVELROCK floor underlayment to seep under the strip. Seal off any problematic areas with a premium grade of duct tape.
3. Make sure that the sound mat lies reasonably flat. Cut out and replace any sections that refuse to lie flat.
4. Install LEVELROCK floor underlayment at a 1-in. minimum thickness, according to USG instructions.

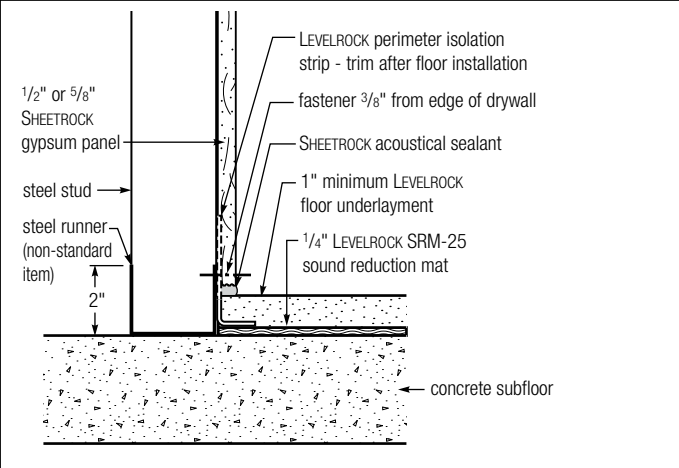
Note: More detailed system instructions can be found in the *LEVELROCK Applicator's Manual*.

Finish Flooring

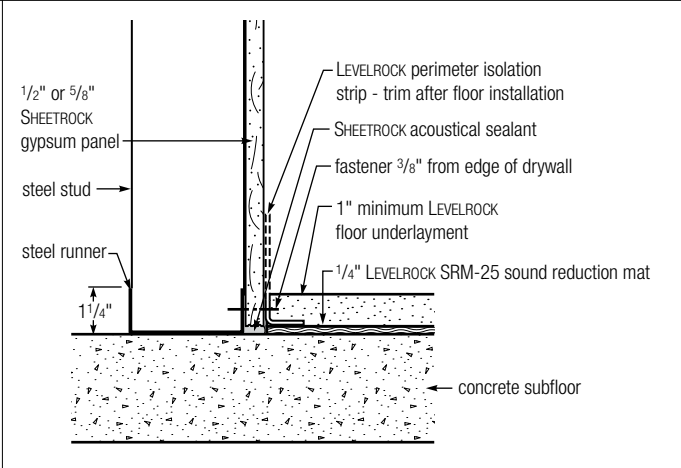
1. Install hardwood, tile or natural stone according to ANSI A108.5, leaving a 1/4-in. gap between the flooring material and wall. Fill the gap with acoustical sealant to prevent lateral sound transmission.
2. With vinyl and carpet, no gaps are required between the flooring material and walls. Carpet tack strips should be installed at least 1/4 in. from the edge of the poured LEVELROCK floor underlayment.
3. Shim baseboards 1/8 in. above the finished floor and fill the gap underneath with acoustical sealant.

Assemblies

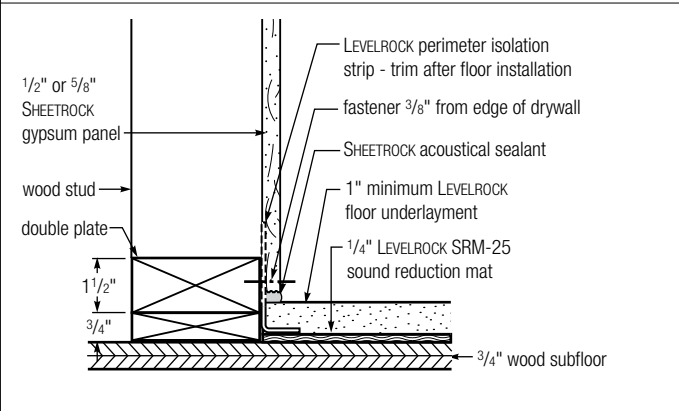
Concrete Subfloor, Steel Framing— LEVELROCK Installed Before Drywall



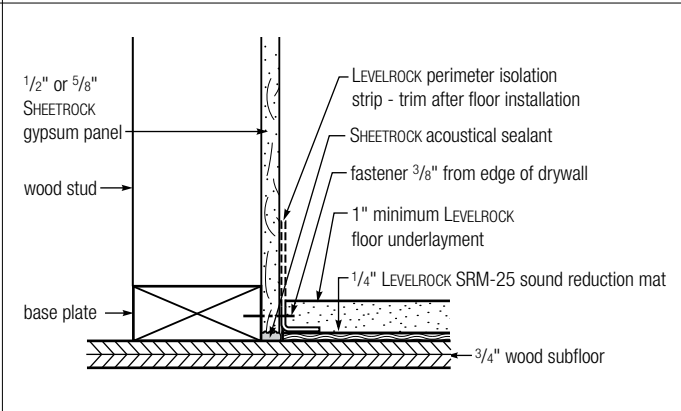
Concrete Subfloor, Steel Framing— LEVELROCK Installed After Drywall



Wood Subfloor, Wood Frame — LEVELROCK Installed Before Drywall



Wood Subfloor, Wood Frame — LEVELROCK Installed After Drywall



Note: Drawings not to scale.

UL Designs and Code Approvals	UL Designs	Refer to individual LEVELROCK floor underlayment product literature for applicable designs.
	Model Building Code Approvals	ICC Evaluation Service Report No. ER-5885 New York City Department of Buildings MEA (Materials and Equipment Acceptance) MEA 236-01-M HUD 1314
Product Data		<p>Material: High-strength polyethylene core and polypropylene fabric</p> <p>Thickness: 0.25 in.</p> <p>Density: 2.4 lbs./cu. ft.</p> <p>Weight: 0.20 lbs./sq. ft.</p> <p>Burst Strength: 200 lbs.</p> <p>Puncture Strength: 60 lbs.</p> <p>Color: Black</p>
Test Data	Acoustical Performance	<p>IIC: Additional 8-13 points</p> <p>STC: Additional 4-7 points</p> <p>Note: Contact USG or Alcorp Marketing for detailed test results of various systems. Tests were conducted under laboratory conditions according to ASTM E90 and E492 in a NVLAP-accredited facility. Actual field conditions may vary from laboratory conditions and affect results. Consult ASTM E1007 for a list of variable conditions. Values shown represent typical improvements provided by LEVELROCK SRM-25 sound reduction mat.</p>
Storage and Handling		Material shall be delivered in original packaging and stored in an enclosed shelter, providing protection from damage and exposure to the elements.
Packaging		<p>Roll Width: 36 in.</p> <p>Length: 110 ft.</p> <p>Area: 330 sq. ft.</p> <p>Roll Diameter: 21 in.</p> <p>Gross Weight: 75 lbs.</p>
Submittal Approvals	Job Name	
	Contractor	Date

Product Information

See levelrock.com for the most up-to-date product information.

WARNING!

Direct, repeated rubbing contact with the skin may cause slight irritation. Avoid contact with eye. Do not ingest.

If ingested, call physician.
Product safety information:
800 507.8899 or usg.com.

KEEP OUT OF REACH OF CHILDREN.

Trademarks

The following trademarks used herein are owned by United States Gypsum Company or a related company: LEVELROCK, SRM-25, SHEETROCK, USG. LEED is a registered trademark of U.S. Green Building Council. Nashua is a registered trademark of Nashua Corporation. Shurtape is a registered trademark of Shurtape Technologies Inc.

Notice

We shall not be liable for incidental or consequential damages, directly or indirectly sustained, nor for any loss caused by application of these goods not in accordance with current printed instructions or for other than the intended use. Our liability is expressly limited to replacement of defective goods. Any claim shall be deemed waived unless made in writing to us within thirty (30) days from the date it was or reasonably should have been discovered.

Safety First!

Follow good safety/industrial hygiene practices during installation. Wear appropriate personal protective equipment. Read MSDS and literature before specification and installation.

