

Levelrock™ Sound Reduction Board

SRB™

Economical, high-performance sound reduction board

- Provides excellent sound control
- Sound systems meet or exceed International Building Code requirements for 50 IIC and 50 STC
- Qualifies for LEED® credits
- Water-resistant, smooth coated finish
- 1-1/8 in. total system thickness minimizes floor transitions
- Robinson tested for system durability

Description

LEVELROCK™ brand SRB™ sound reduction board is an economical sound control material used to increase IIC and STC levels in all types of construction. With its thin 3/8-in. profile, SRB sound reduction board, when topped with 3/4-in. LEVELROCK® floor underlayment, minimizes transition height changes between rooms. This sound reduction board system has also achieved a residential rating on the Robinson floor test (ASTM C627).

SRB sound reduction board can also contribute to sustainable building practices under the LEED® (Leadership in Energy and Environmental Design) Green Building Rating System, the voluntary, consensus-based standard to support and certify successful green building design, construction and operations. The recycled content of SRB sound reduction board (49.7%, of which 17% is post-consumer material) can help a building achieve a LEED rating.

Limitations

1. Do not install where continuous exposure to moisture is a possibility.
2. LEVELROCK floor underlayment should be poured to a minimum 3/4-in. thickness over SRB sound reduction board.

Installation

During the entire installation process, the building must be enclosed and the SRB sound reduction board protected from the environment. The subfloor must be clean, dry and free of debris. SRB sound reduction board is applied to the subfloor with edges butted together.

Perimeter Isolation Strip

1. Prior to installation of SRB sound reduction board, install 4-in. x 1/8-in. LEVELROCK™ perimeter isolation strip polyethylene foam vertically at the subfloor perimeter, including doorframes and around protrusions (e.g., plumbing, electrical, etc.). LEVELROCK perimeter isolation strip isolates the underlayment from the walls, creating an acoustical break to minimize lateral sound transmission.
2. Do not attach LEVELROCK perimeter isolation strip with nails, screws, etc., as mechanical fasteners conduct impact sound, eliminating acoustical isolation.

Wood subfloor: Place LEVELROCK perimeter isolation strip's adhesive portion against the top surface of the SRB sound reduction board. The perimeter isolation strip should be folded into an L-shaped angle so that the adhesive portion placed onto the SRB sound reduction board is only 1 in. In the portion of the perimeter isolation strip that is lying against the sound board, make sure there are no kinks or areas that could allow LEVELROCK floor underlayment to seep under the strip. Seal off any problem areas with a high-quality duct tape (see recommendation on next page in *SRB Sound Reduction Board*).

The 3-in. portion of the perimeter isolation strip should go up against the wall (when installing LEVELROCK floor underlayment after drywall) or up against the bottom plate/runner track (when installing LEVELROCK floor underlayment before drywall). Place adhesive backing of the perimeter isolation strip against the wall. Overlap and tape all vertical joints of the perimeter isolation strip to prevent leakage of LEVELROCK floor underlayment behind the foam. To ensure good acoustical performance, it is imperative that LEVELROCK floor underlayment not be allowed to flow under the perimeter isolation strip or get behind it in any way. Prior to pouring LEVELROCK floor underlayment, recheck for all possible leak points. After LEVELROCK floor underlayment has been poured and has set, trim the excess perimeter isolation strip just above the level of the underlayment.

SRB Sound Reduction Board

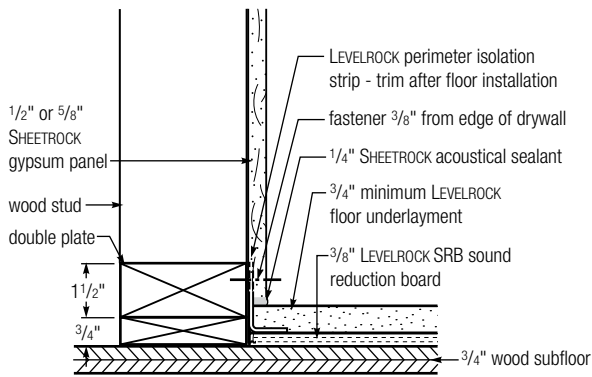
1. Cut SRB sound reduction board with a utility knife to fit it against the walls. Position cut edges against the wall; only factory edges should be joined in the field. Begin laying panels at one corner. Stagger panel joints 16 in. o.c. minimum so that the 4 panel corners never meet, and offset the end and edge joints of the SRB sound reduction board panels a minimum of 8 in. from the subfloor panel joints.
2. Tape joints with sound mat seam tape or a high-quality duct tape such as Nashua® 357, Shurtape® PC721 or equivalent. Do not use economy grades of duct tape, as the adhesive qualities are not sufficient to hold a bond when LEVELROCK floor underlayment is applied. SRB sound reduction board is free floating. Do not attach it to the subfloor with nails, screws, staples, glue or other types of attachments, as these will eliminate the acoustical isolation.
3. Prime SRB sound reduction board face with LEVELROCK™ floor primer (regular, concentrate or powdered), following instructions for priming wood floors (see *LEVELROCK Floor Primer*, IG1505). Install a minimum of 3/4-in. LEVELROCK floor underlayment according to USG instructions.

Finish Flooring

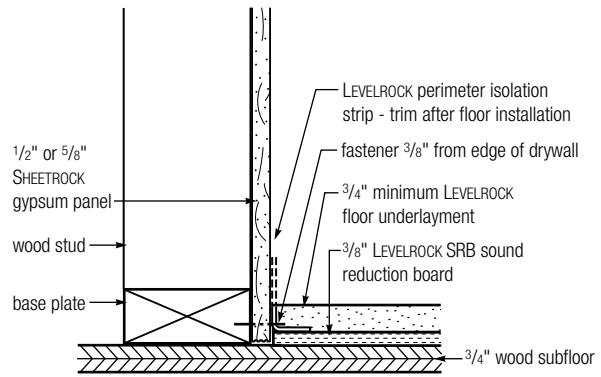
1. Install hardwood, tile or natural stone according to ANSI A108.5, leaving a 1/4-in. gap between the flooring material and wall. Fill the gap with acoustical sealant to prevent lateral sound transmission.
2. With vinyl and carpet, no gaps are required between the flooring material and walls. Carpet tack strips should be installed at least 1/4 in. from the edge of the poured LEVELROCK floor underlayment.
3. Shim baseboards 1/8 in. above the finished floor and fill the gap underneath with acoustical sealant.

Assemblies

Wood Subfloor — LEVELROCK Installed Before Drywall



Wood Subfloor — LEVELROCK Installed After Drywall



| | | | |
|---------------------|-------------------|------------------------------|---------------------------|
| Product Data | Tolerances | Thickness | ± .015" sanded and coated |
| | | Width and length (per 4 ft.) | ± .0625" |

VOC content: Zero

Storage and Handling All materials shall be delivered in their original unopened packages and stored in an enclosed shelter providing protection from damage and exposure to the elements. Damaged or deteriorated materials shall be removed from the premises.

| | | | |
|--|--|------------------------------|------------------|
| Test Data | Surface Burning Characteristics | Flame spread ¹ | 25 |
| | | Smoke developed ¹ | 10 |
| | Density (pcf) | 23 ± 3 lbs./cu. ft. | |
| | Weight | 0.72 lbs./sq. ft. | |
| | Tensile Strength | Parallel to surface | 170 lbs./sq. in. |
| | Hygrometric Expansion | From 50% to 90% R.H. | |
| | Thermal Conductivity ² | k Factor | 0.49 |
| | | R Value | 1.03 |
| Acoustical Performance ³ | IIC | Additional 5-8 points | |
| | STC | Additional 2-3 points | |

1. Underwriters Laboratories, Inc. Classified as to surface burning characteristics (File No. R-11588).

2. Test based on 1/2-in. product.

3. Actual acoustical performance depends on system design and construction. Values shown represent typical improvements provided by SRB sound reduction board under vinyl floor covering. Values may vary based on the framing and subfloor type. Tests were conducted under laboratory conditions according to ASTM E90 and E492 in a NVLAP-accredited facility. Actual field conditions may vary from laboratory conditions and affect results. Consult ASTM E1007 for a list of variable conditions.

| | | |
|----------------------------|-------------------|-------------|
| Submittal Approvals | Job Name | |
| | Contractor | Date |

Product Information

See levelrock.com for the most up-to-date product information.

WARNING!

Dust may cause irritation to eyes, skin, nose, throat and upper respiratory tract. Avoid irritation by reducing exposure to dust. Use in a well-ventilated area or provide sufficient local ventilation. If dusty, wear a NIOSH/MSHA-approved dust respirator. Wear eye protection. If eye contact occurs, flush thoroughly with water for 15 minutes. If irritation persists, call physician. Wash with soap and water after use. Do not ingest. If ingested, call physician. If cutting board with a power tool, use a wet or vacuum saw to reduce the amount of dust generated. Panels are heavy

and can fall over, causing serious injury or death. Avoid creating a tripping hazard and do not exceed floor limit loads.

Product safety information: 800 507.8899 or usg.com.

KEEP OUT OF REACH OF CHILDREN.

VOC Content: Zero

Trademarks

The following trademarks used herein are owned by United States Gypsum Company or a related company: LEVELROCK, SHEETROCK, SRB, USG.

LEED is a registered trademark of U.S. Green Building Council. Nashua is a registered trademark of Nashua Corporation. Shurtape is a registered trademark of Shurtape Technologies Inc.

Notice

We shall not be liable for incidental or consequential damages, directly or indirectly sustained, nor for any loss caused by application of these goods not in accordance with current printed instructions or for other than the intended use. Our liability is expressly limited to replacement of defective goods. Any claim shall be deemed waived unless made in writing to us within thirty (30) days from the date it was or reasonably should have been discovered.

Safety First!

Follow good safety/industrial hygiene practices during installation. Wear appropriate personal protective equipment. Read MSDS and literature before specification and installation.

