



FROST Panels with *CLIMAPLUS* Superior Performance/
DONN FINELINE 1/8 DXFF Suspension System

LEED Credits

Recycled Content: 71%
CLIMAPLUS Superior Performance for Mold/Mildew

MR				EQ		
Waste Reduction ¹	Recycled Content	Regional Materials ²	Rapidly Renewable Materials	Low-Emitting Materials	Daylight and Views	Acoustical Performance
●	●	●	●	●	●	●

Features and Benefits

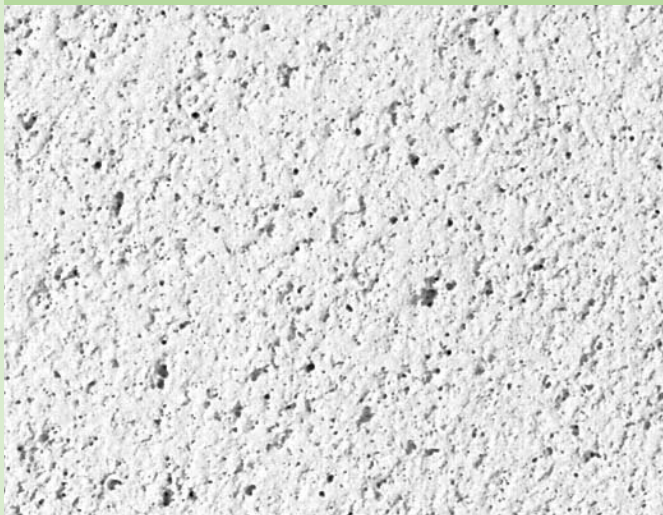
- Fine-textured cast product with durable surface that resists scrapes commonly caused by accessing the ceiling plenum.
- Integral color masks nicks and scratches.
- Nearly two times more impact-resistant than typical fine-textured ceiling panels (ASTM C367).
- *CLIMAPLUS* 30-year lifetime system warranty to withstand conditions up to 104 °F (40 °C)/95% relative humidity without visible sag when used with a DONN® brand suspension system.

Applications

- Boutiques
- Schools
- Conference and lobby areas
- Executive offices
- Open-plan offices

Substrate

- Cast mineral fiber



Fine-textured panel

Call 888 874.2450 for color samples

See individual items for color availability.

Standard Colors

White
Parchment 103 Manila 246 Beige 142 Straw 143 Sandstone 090 Taupe 107
Charcoal 534 Flat Black 205

Advantage Colors

Silverstone 052 Breeze 2659 Blue Grey 564 Azure 2660 Slate 568 Spruce 567 Tuscany 2663 Sorbet 2658
Squash 2662 Safari 2662 Redwood 566 Sienna 565 Halo 206 Mist 053 Nectar 546 Quartz 082

30
 Year System Warranty
 - No visible sag
 - Mold/mildew protection

UL Classified													
Edge	Panel Size	Class	Item No.	NRC	CAC Min. ³	LR ⁴	Color ⁵	Grid Options	VOC Emissions	Anti-Mold & Mildew	Abuse-Resistant	Recycled Content ⁶	Panel Cost
FROST CLIMAPLUS Panels	SLB 	2'x2'x3/4" Paper-Back	Class A 414	.70	38	.83	White Standard Advantage	A	Zero			71%	\$\$
	FL 	2'x2'x3/4" Paper-Back	Class A 418	.70	38/40	.83	White Standard Advantage	B, C, D	Zero			71%	\$\$
	FLB 	2'x2'x3/4" Paper-Back	Class A 419	.70	38/40	.83	White Standard Advantage	B, C, D	Zero			71%	\$\$
FROST CLIMAPLUS High LR	SLB 	2'x2'x3/4" Paper-Back	Class A 490	.70	35	.88	White	A	Zero			71%	\$\$
	FLB 	2'x2'x3/4" Paper-Back	Class A 491	.70	35	.88	White	B, C, D	Zero			71%	\$\$
Legend													
Zero Emissions (VOC Class) Classified as zero-emitting per standards established by the Collaborative for High-Performance Schools (CHPS), following California Specification 01350 testing methods.				CLIMAPLUS Superior Performance⁷ Contains a broad-spectrum antimicrobial treatment on the face and back of the panel that provides guaranteed resistance against the growth of mold/mildew, fungi, yeast, algae, and Gram-positive and Gram-negative odor/stain-causing bacteria.									
A DX [®] /DXL [™]	B CENTRICITEE [™] DXT	C FINELINE [®] DXF	D FINELINE [®] 1/8 DXFF										
Grid Profile Options													

Physical Data/ Footnotes

Product literature
 Data sheet: SC1968

ASTM E1264 classification
 Type III, Form 4, Pattern E

ASTM E84 surface burning characteristics
 Class A
 Flame spread: 25
 Smoke developed: 50

Weight
 1.65 lb./sq. ft.

Thermal resistance
 R-1.7 (Class A)

Maximum backloading
 See Warranty for details.

Maintenance
 Can be cleaned easily with a soft brush or vacuum.

Texture
 The manufacturing process for cast ceiling panels creates natural, subtle texture variations, which is a distinguishing feature of these products. Because of potential variances between production dates, we recommend ordering and installing cast products by production lot number.

Footnotes

1. Applies when USG acoustical ceilings recycling program is utilized.
2. Dependent on location; see Sustainability selector.
3. Item Nos. 418 and 419 achieve 40 CAC when installed with FINELINE or FINELINE 1/8 suspension system.
4. LR values are shown as averages.
5. See Colors selector for more information.
6. For details, see Sustainability selector.
7. Panel face and back surfaces treated with a patented, broad-spectrum antimicrobial standard formulation that inhibits and retards

the growth of mold/mildew, fungi, yeast, and odor/stain-causing Gram-positive and Gram-negative bacteria. For details, see *Ceiling Systems Warranties and Limitations* (SC2102) and *CLIMAPLUS Ceilings Certification of Performance* (SC2451).