

T3ss
Gas Technology
Single Pin Gas Tool
Fuel Injection



GAS TECHNOLOGY



For information on our full line of accessories for your T3ss, see pages 6-8.

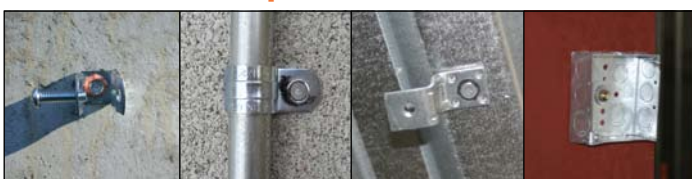
ADVANTAGES

- | Sets the standard for single-shot applications
- | 5 times faster than traditional drill and anchor methods
- | Replaces the need for tools like the DX35
- | Reduces operator fatigue
- | Reduces installation costs—up to 75%
- | Quiet enough to work in tenant-occupied buildings
- | Removable rear foot for greater flexibility
- | 2 Year Warranty (6 months on wearable parts)

SPECIFICATIONS

- | Length: 13-1/2"
- | Height: 15"
- | Weight: 7.0 lbs.
- | Pin Guide O.D.: 1/2" Standard, 7/8" Magnetic
- | Maximum Pin Length: 1-1/2"

VERSATILE, fastens to solid concrete, hollow block, pan deck and steel.



Concrete Hollow Block Pan Deck Steel



T3ss is the only gas tool that has been awarded the "NECA SHOW STOPPER AWARD."

This Ramset tool is protected by the following U.S. patents 5133329, 5263439, 5415136, 6138887, 6123241.

PLACE ORDERS: 1-800-241-5640
TECH SUPPORT: 1-800-816-6645
WEBSITE: WWW.RAMSET.COM

FROM POWDER TO GAS

Ramset is serious about **Driving Jobsite Speed**. With the T3ss, Ramset created a better, faster, safer and cheaper way for the electrician to fasten metal to concrete, hard concrete or steel, hollow block and pan deck. With gas you never have to change a load because the fuel cell and the powerful single-piston engine do the thinking for you. It actually senses the material you are shooting into to deliver consistent power.

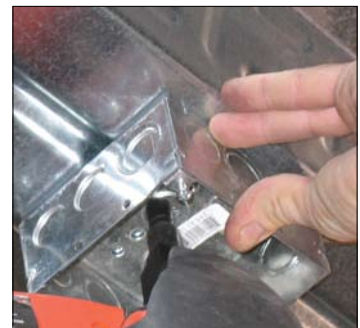
Safety managers recommend the T3ss because there is no licensing* or special training required. And with virtually no kick-back, the T3ss significantly reduces operator fatigue for the contractor who normally shoots a powder actuated tool. And because there is no drilling, using gas technology eliminates exposure to concrete dust, which is the main source of Silicosis.

All these benefits and it is quiet enough to work in occupied hospitals, schools and apartment buildings. Drive your jobsite speed with the revolutionary T3ss, single-shot gas tool.

*T3ss does not use powder actuated loads as defined by the ANSI A 10.3 standard "Powder Actuated Fastening Systems—Safety Requirements," nor do they work under the same principle as PATs for tools that do not fall under ANSI A10.3, no licensing is required.



No more fines for unspent loads on the jobsite.



GAS TECHNOLOGY

FASTENER AND MAGNETIC NOSEPIECE



The optional interchangeable nosepiece (Part Number M150200) is able to shoot a variety of M series fasteners.

FUEL CELL AND BATTERY



QuickConnect Fuel System fuel cells replace conventional powder loads and drives more than 1000 pins. **(Part Number T3FUEL)**

NO ASSEMBLY REQUIRED!
Click the fuel cell in place and the T3ss is ready to go.



The 6-volt Ni-Cad battery can drive more than 3000 shots per charge. The integrated "OFF" switch locks into place to extend battery life. **(Part Number B0092)**

BATTERY CHARGER

The T3 charger incorporates a charge level indicator to inform the user of the battery charge level.



Battery Charger **(Part Number B0022)**



Pre-assembled, single shot



PLASTIC JAR AND MASTER CARTON
 QUANTITIES EFFECTIVE 4/1/08.

Selection Chart

PRE-ASSEMBLED ACCESSORIES

Each accessory comes pre-assembled with a 3/4" step-shank (.104/.125) plated pin, head diameter = .300

THREADED ROD HANGER

For suspended ceilings, piping and other items using 1/4 or 3/8 threaded rod.



FASTENER IS PREASSEMBLED TO A 16 GAUGE THREADED ROD HANGER.

PART NUMBER	SIZE	JAR QTY	MASTER CTN
14TRHMP034	1/4" (UL)	100	8 Jars
38TRHMP034	3/8" (UL)	100	8 Jars

ONE HOLE STRAP

Used to attach conduit or armored cable to concrete.



FASTENER PREASSEMBLED TO A 16 GAUGE CONDUIT STRAP.

PART NUMBER	SIZE	JAR QTY	MASTER CTN
38HSMP034*	3/8" (UL)	200	6 Jars
12HSMP034	1/2"	100	8 Jars
34HSMP034	3/4"	100	6 Jars
10HSMP034	1"	100	6 Jars
114HSMP034**	1-1/4"	25	6 Jars

*38HSMP034 = 18 gauge **114HSMP034 = 13 gauge

CONDUIT CLAMP

Used to attach conduit to concrete.



PIN PREASSEMBLED TO AN 18 GAUGE CONDUIT CLAMP.

PART NUMBER	SIZE	JAR QTY	MASTER CTN
12CCMP034L	1/2" (UL)	50	6 Jars
34CCMP034L	3/4" (UL)	25	6 Jars

CEILING CLIP ASSEMBLY

Preassembled ceiling clip.



PLATED 14 GAUGE CLIP.

PART NUMBER	SIZE	JAR QTY	MASTER CTN
34CLIP	3/4"	100	8 Jars

TIE STRAP HOLDER

Used to install temporary lighting and secure low voltage cable to concrete; uses a standard cable tie up to 3/8" in width.

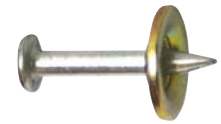


FASTENER PREASSEMBLED TO A 22 GAUGE TIE STRAP HOLDER.

PART NUMBER	JAR QTY	MASTER CTN
TSHMP034	50	25 Jars

MECHANICAL PIN WITH WASHER

Used for the attachment of light gauge metal to concrete and steel such as junction boxes or HVAC duct straps to concrete.



PLATED PIN PREASSEMBLED TO A 1/2" DOMED WASHER.

PART NUMBER	PIN LENGTH	JAR QTY	MASTER CTN
Straight shank general purpose pin (.125 shank)			
M034	3/4"	200	25 Jars
M100	1"	200	25 Jars
Premium, step-shank pin (.104/.125 shank)			
M012	1/2"	200	25 Jars
M034BB	3/4"	200	25 Jars
PowerPoint step-shank pin (.125/.150 shank)			
M100BB	1"	500	8 Jars

Head diameter = .300 (M012 = .250)

* For use with the optional nosepiece, P/N: M150200

1/4-20 THREADED STUD

Used to attach electrical components to concrete where removability of the component is required.



PLATED THREADED STUD.

PART NUMBER	THREAD LENGTH	SHANK LENGTH	JAR QTY	MASTER CTN
14STUD	1/2"	3/4"	200	25 Jars

Shank diameter = .125

TOP HAT PIN

Used for general purpose fastening to concrete.



PLATED PIN WITH TOP HAT.

PART NUMBER	DESCRIPTION	JAR QTY	MASTER CTN
MP034TH	3/4" plated pin with top hat	200	25 Jars

Shank diameter = .125 Head diameter = .300

BRIDLE RING

Pre-assembled 2" bridle ring supports low voltage, data com, signal and control cables.

50 PER BOX. MASTER CARTON 5 BOXES

PART NUMBER	DESCRIPTION
BR2	2" bridle ring with fastener assembly
BR200 * †	2" bridle ring w/o fastener, w/attached washer
BR2S	2" bridle saddle

Shank diameter = .125



* For use when fastening with, powder actuated tools, Tapcon, or conventional drill and anchor methods.

† 100 per box, no master carton.

GAS TECHNOLOGY



T3ss Pole Tools (EPOL6 and EPOL8)

Easy to assemble

GAS TECHNOLOGY

Available
in 6' and 8'
lengths

Extend
Your Reach!

New ergonomic design
balances the tool
directly over the pole
for a lightweight feel.



ADVANTAGES

- | **Specially designed for T3ss.**
- | **Easy to operate.** Comfortable "motorcycle" grip replaces handbrake mechanisms.
- | **Sturdy design.** 25 percent thicker than similar poles for greater support.
- | **No hose clamps required.** Simple to assemble.
- | **Pole weight: 5 lbs.**

EASY TO ASSEMBLE



ASSEMBLY VIDEO AVAILABLE AT WWW.RAMSET.COM/T3SS

