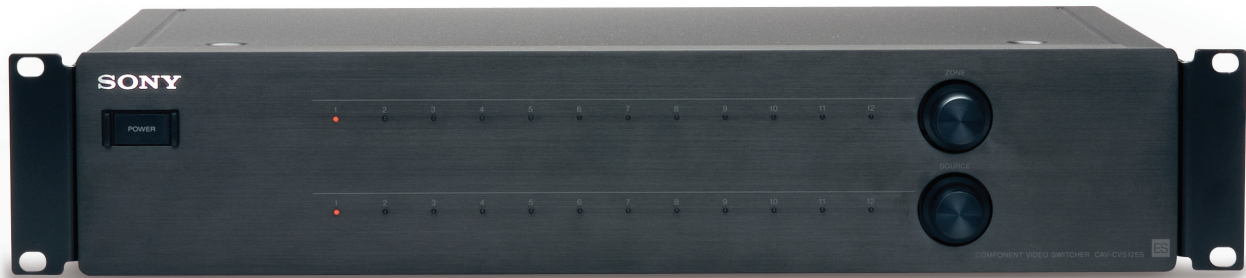


CAV-CVS12ES SPECIFICATION SHEET

High Definition Component Video Switcher

SONY



FEATURES

- Distributes up to 12 zones of high definition video over CAT5e
- 8 component video inputs supporting up to 1080p
- 4 composite video inputs with up conversion
- IR and RS232 control
- Designed for and fully integrated with CAV-M1000
- CAT5e to component video balun at TV location

SPECIFICATIONS



POWER REQUIREMENTS

- 120VAC, 60 Hz
- Power consumption: 33W

INPUTS AND OUTPUTS

- Video input
 - Y: 1.0Vp-p/75 ohm
 - Pb: 0.7Vp-p/75 ohm
 - Pr: 0.7Vp-p/75 ohm
- IR input: accepts 40kHz IR modulation frequency
- Video output
 - CAT5e RJ45

DIMENSIONS

- 17 1/4" (w) x 4" (h) x 11 1/2" (d) (including projecting parts)
- 2U rack space

WEIGHT

- 9 lbs. 15 oz. (excluding AC power cord)

SUPPLIED ACCESSORIES

- Rack ears

SONY

Sony Electronics Inc.
1 Sony Drive
Park Ridge, NJ 07656

For more information:
sony.com/newhome