

Taralay Premium



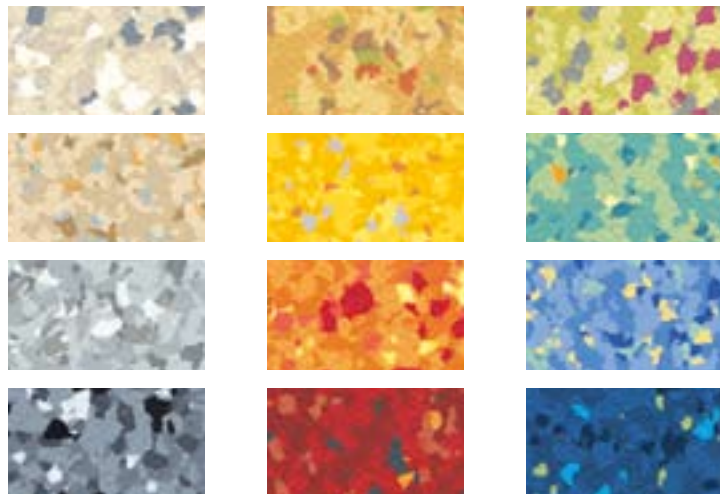
Floors to match your imagination

Gerflor



Call Gerflor
to request your
samples!

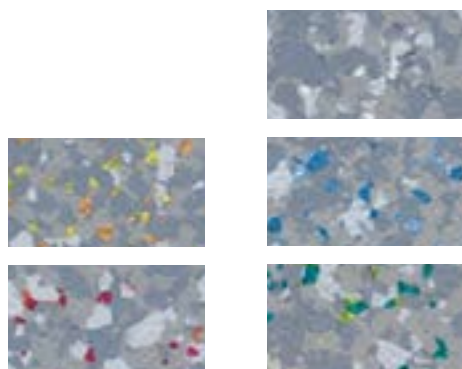
Forum



Welding rods

4411	Brahmapoutre	0585 0524
4416	Guadalquivir	0585 0562
8160	Orenoque	0585 0928
8164	Zambeze	0585 0092
8216	Tamise	0585 0089
8227	Hudson	0585 2173
8304	Mekong	0585 0081
8418	Yangtze	0585 0083
8582	Oural	0585 2242
8606	Yukon	0585 2151
8751	Volga	0585 0005
8825	Okavango	0585 0919

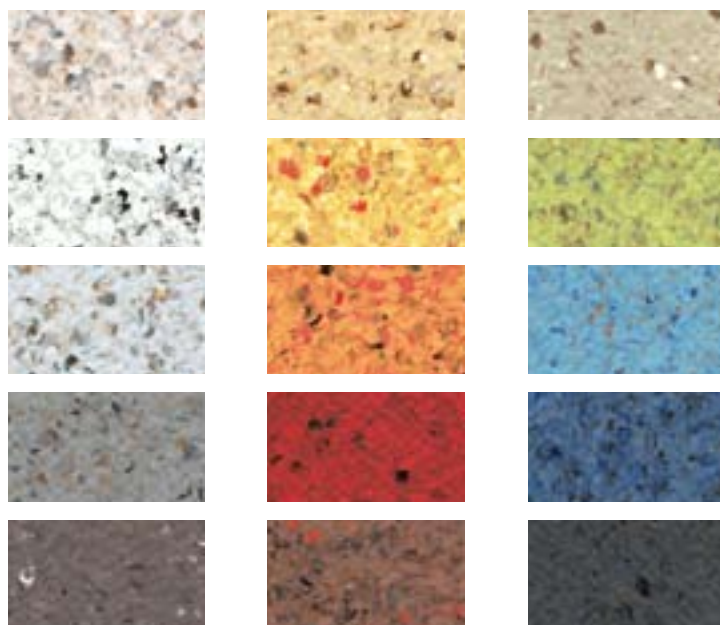
Artic



Welding rods

4415	Lapis	0585 0075
4742	Diamond	0585 0075
8165	Cornaline	0585 0075
8228	Goldust	0585 0075
8585	Emerald	0585 0075

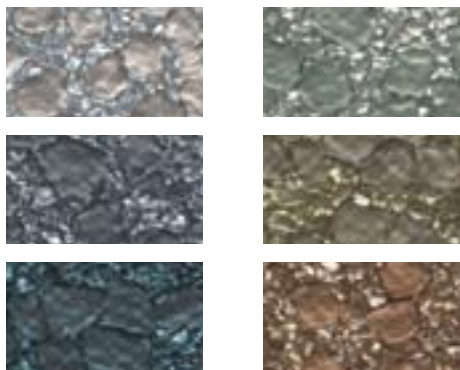
Costa Rica



Welding rods

4454	Ara	0585 2270
4456	Marina	0585 2271
4743	Nublo	0585 0603
4746	Jaguar	0585 2272
4752	Sombra	0585 0337
4794	Talamanca	0585 0026
8027	Cacao	0585 2268
8167	Papagayo	0585 0234
8183	Volcan	0585 2267
8191	Meseta	0585 2257
8230	Arenal	0585 0082
8387	Balsa	0585 2265
8395	Caballo	0585 2266
8587	Tortuga	0585 2269
8590	Quetzal	0585 2234

Zenium



Welding rods

4744	Moon Pearl	0585 2261
4747	Silver Star	0585 0534
8012	Bronze Patina	0585 2263
8018	Copper Field	0585 2264
8588	Celadon Acqua	0585 2262
8839	Condor Slate	0585 0918

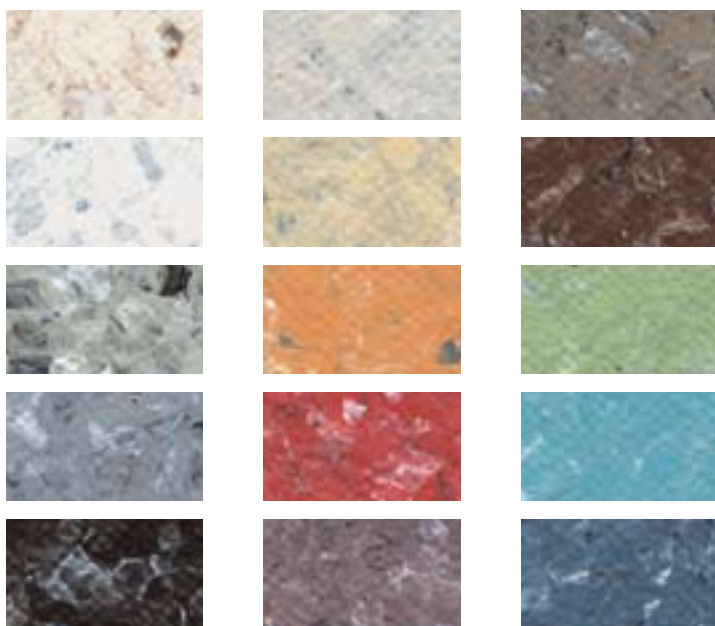
Metallica



Welding rods

9002	Pulsar	0585 2245
9102	Orbit	0585 2246
9105	Supernova	0585 2247
9127	Meteorite	0585 0610
9206	Apollo	0585 2248
9318	Comet	0585 0608
9326	Starlight	0585 0318
9330	Moon	0585 0613
9415	Celeste	0585 2249
9460	Spectre	0585 0607
9505	Equinox	0585 0468
9510	Gamma	0585 2250
9719	Eclipse	0585 0611
9745	Cosmic	0585 0254
9753	Energy	0585 0173

Fusion

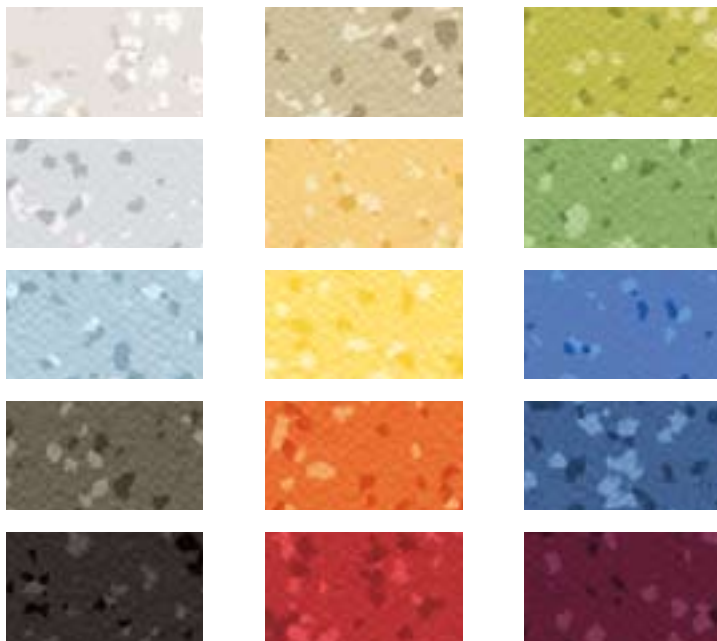


Welding rods

4412	Fujiyama	0585 2259
4425	Krafla	0585 2260
4741	Lanzarote	0585 2253
4745	Lopevi	0585 0120
4748	Kamchatka	0585 2252
4749	Vesuvio	0585 2227
4753	Cotopaxi	0585 2251
8011	Pinatubo	0585 0301
8014	Nyragongo	0585 0137
8022	Merapi	0585 2258
8158	Pacaya	0585 2255
8163	Santorini	0585 2256
8180	Paricutin	0585 2257
8384	Kilimandjaro	0585 2254
8583	Fournaise	0585 2228

Accent colours, harmonious design, warm and soft

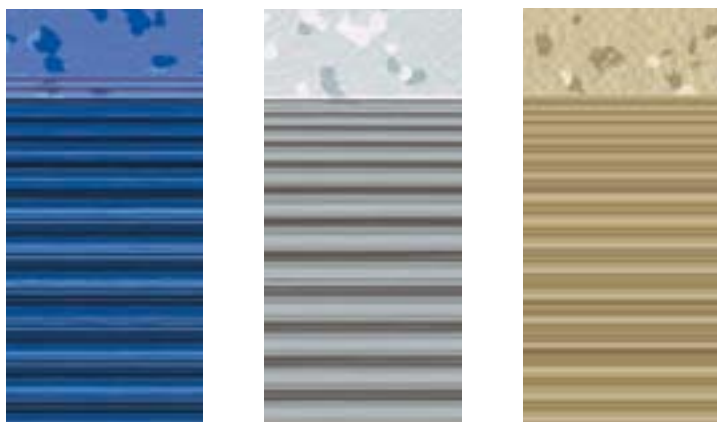
Brazilia



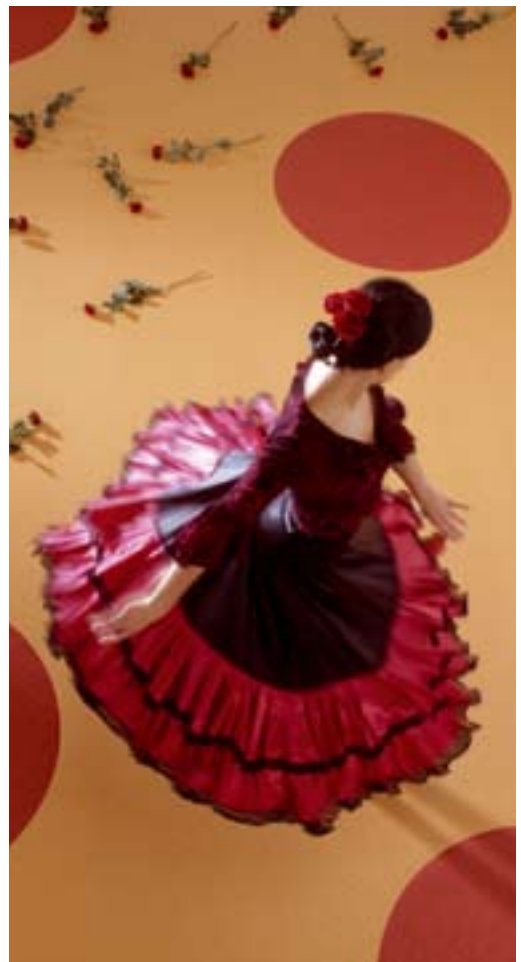
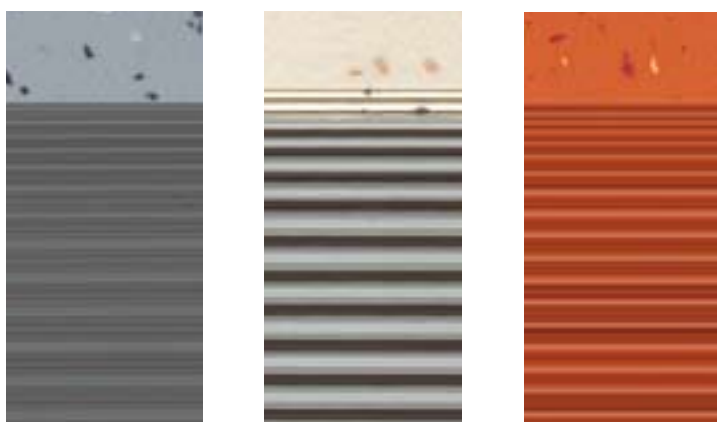
Welding rods

4421	Vitoria	0585 0692
4729	Mato Grosso	0585 2182
4732	Santa Fe	0585 2236
8007	Teresina	0585 2237
8010	Rondonia	0585 2238
8157	Goias	0585 2240
8159	Macapa	0585 2241
8162	Laguna	0585 2243
8223	Olinda	0585 2239
8244	Fortaleza	0585 0110
8386	Boa Vista	0585 0153
8408	Salvador	0585 0117
8577	Amazonas	0585 2242
8578	Palmas	0585 0933
8736	Recife	0585 0304

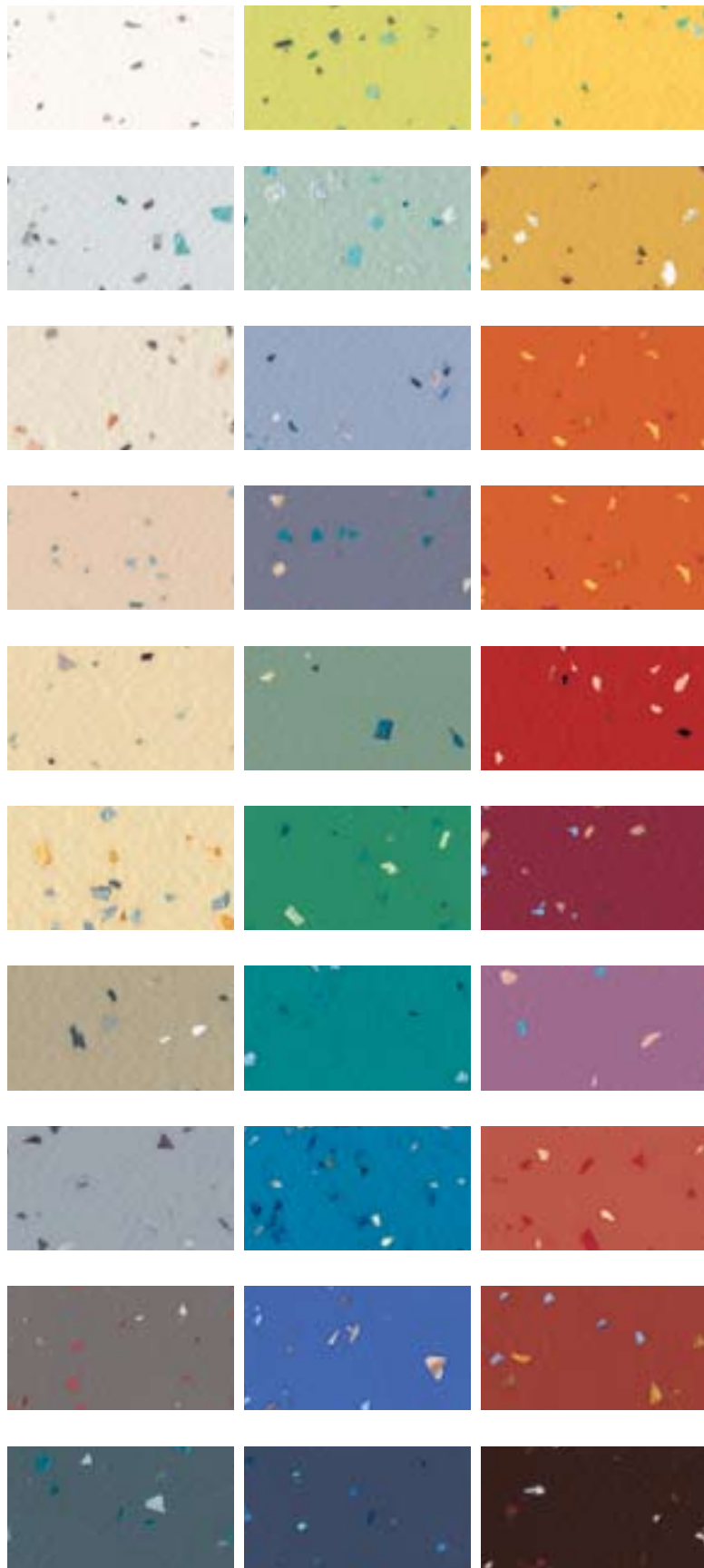
Tarastep Brazilia



Tarastep Indiana



Indiana



Welding rods

4001	Ofu	0585 2160
4002	Manua	0585 0577
4003	Tao	0585 0586
4004	Pago	0585 2172
4005	Futuna	0585 0325
4006	Ipao	0585 2164
4007	Upolu	0585 2170
4008	Tapu	0585 2163
4009	Tufoa	0585 2161
4010	Likufa	0585 0643
4011	Hunga	0585 0660
4012	Mataso	0585 0634
4013	Pentecosta	0585 2175
4014	Aurora	0585 2169
4015	Guinea	0585 2166
4016	Salomoni	0585 2171
4017	Papouasia	0585 2165
4018	Pavuvu	0585 2162
4019	Tarara	0585 0119
4020	Borora	0585 2176
4021	Pasara	0585 2167
4022	Korasa	0585 0004
4023	Nukiki	0585 0602
4024	Mono	0585 0905
4025	Tobago	0585 2173
4026	Siara	0585 2158
4027	Mosigo	0585 2940
4028	Boku	0585 2168
4029	Baduna	0585 2174
4030	Vanuatu	0585 2159



Healthcare



Education



Shops



Hotels



Offices

Product benefits

The most durable and easy to maintain flooring on

PROTECSOL®

**The original no-polish-for-life solution.
The only proven, surface treatment
with a 20 year service life record.**

This unique UV-cured polyurethane surface treatment protects the floorcovering and eliminates the need for costly emulsion dressings throughout the life of the product.

Developed exclusively by Gerflor back in 1987, Protecsol® is a permanent, factory applied treatment which has been proven independently to reduce both the time and costs required to protect standard, resilient floorcoverings.

Gerflor is an innovative manufacturer and continuously strives through heavy investment in R&D to meet and exceed its customers expectations both in terms of product quality and in low environmental impact. Our plants are constantly being upgraded and improved with the latest round of investments for Protecsol® concluding in 2006.

20 years

VHD



New Very High Density foam for Taralay Premium Comfort

VHD foam is reinforced with a glassfibre grid and a compact interlayer to allow heavy loads to be spread evenly across the surface and offer rapid indentation recovery whilst providing excellent noise attenuation.

Excellent acoustic properties



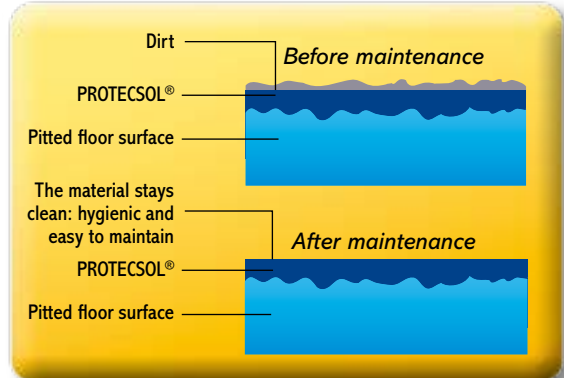
- VHD comfort ranges retain 95% of their acoustic properties throughout the life of product and reduce impact noise.

Improved indentation resistance

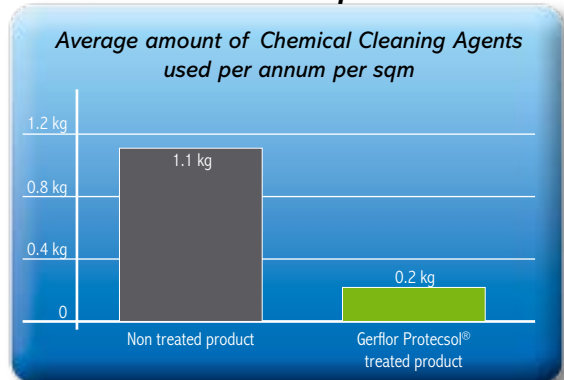


- The flooring recovers rapidly from point indentation marks to its original smooth surface

Exclusive to Gerflor



Low environmental impact



Improved dynamic load resistance eg. heavy wheeled furniture such as trolleys, hospital beds, etc



- Due to its high dimensional stability, the product will reduce rucking to a minimum when heavy loads are wheeled across the surface. This offers the dual benefit of making the floor more durable in heavy traffic areas and reducing the effort required to push trolleys and other furniture across the floor.

Excellent shock absorption



- Underfoot cushioning improves walking conditions and reduces body fatigue
- Offers extra protection from accidental trips and falls

the market

→ Extreme durability

- 1mm 100% pure PVC wearlayer
- Group T abrasion rating
- Suitable for high traffic areas

→ Ease of maintenance

PROTECSOL® surface treatment

- No polish required for the entire lifetime of the product
- Reduced maintenance cost
- Excellent life cycle performance

→ Excellent chemical and stain resistance

- ProtecSol® surface treatment and 100% pure PVC wearlayer offers a smooth non porous surface which can withstand most commonly used chemicals including alcohols used in cleaning agents
- ProtecSol® surface treatment offers excellent stain resistance when compared to other treatments

→ High design options

- Long lasting appearance ensured through the incorporation of densely pressed coloured chips in the wearlayer
- Clear, bright colours due to the pure PVC and no filler content of the range

→ Range coordination

- Floorcovering available in compact and comfort
- Tarastep co-ordinated for the stairs
- Brazilia design available in other ranges : Taradouche Shower system, Attraction, Saga

→ Taralay Premium Compact

Excellent resistance to static and dynamic loads:

- Excellent indentation recovery ($\approx 0,03$ mm)
- Excellent dimensional stability – minimal rucking when heavy objects wheeled across the surface

→ Taralay Premium Comfort

Excellent acoustic and shock absorption properties

- Excellent resistance to static and dynamic loads eg. wheeled furniture
- Very good indentation resistance and recovery
- High acoustic performance (16 dB)
- Safe-underfoot cushioning

→ Hygienic

- Suitable for use in damp, moist areas
- Non absorbent, impermeable and non porous the flooring cannot decay
- Treated with Sanosol® to combat the growth of fungus and bacteria
- Can be hot welded to form a completely water tight finish.

→ Easy installation

- Taralay Premium does not discolour or crack when formed for coving or skirting
- Full range of finishing accessories including cove formers and capping strips.

→ Environmentally sustainable products

- 100% recyclable products
- Environmentally friendly raw materials and production processes
- Reduced use of detergents, water and energy consumption thanks to ProtecSol®
- Excellent whole life cost performance



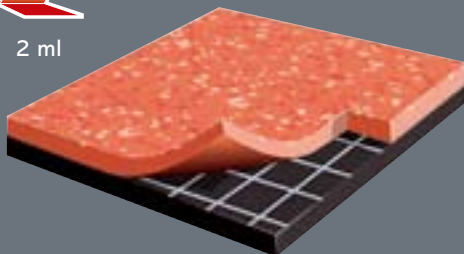
Product description and technical data

Taralay Premium Compact

ProtecSol®



2 ml



TARALAY PREMIUM COMPACT is a multilayered calendered and pressed PVC floorcovering available in 2m wide sheet (Group T wear rating). The product comprises a ≥ 1 mm thick, pure PVC, wearlayer incorporating very densely pressed coloured chips, and a compact backing which is calendered, pressed, and reinforced with a glass fibre grid.

TARALAY PREMIUM COMPACT's calendered wear layer is treated with ProtecSol®, a UV cured anti-glazing surface treatment to facilitate easy maintenance and permanently eliminate the need for acrylic emulsion (metallisation).

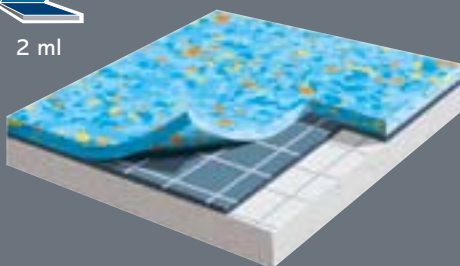
The product is antistatic (AS class 1) and incorporates Sanosol®, an anti-bacterial and fungicidal treatment.

Taralay Premium Comfort

ProtecSol®



2 ml



16dB



TARALAY PREMIUM COMFORT is a multilayered calendered and pressed acoustic PVC floorcovering available in 2m wide sheet (Group T wear rating).

The product comprises a ≥ 1 mm thick, pure, PVC wearlayer incorporating very densely pressed coloured chips, and a Very High Density (VHD) foam (yielding a 16 dB sound insulation rating) reinforced with a glass fibre grid.

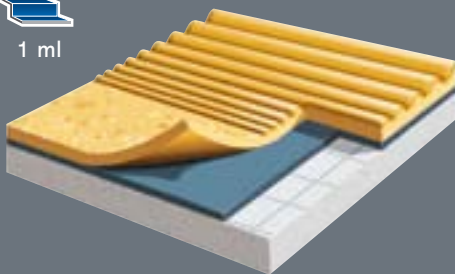
TARALAY PREMIUM COMFORT's calendered wear layer is treated with ProtecSol®, a UV cured anti-glazing surface treatment to facilitate easy maintenance and permanently eliminate the need for acrylic emulsion (metallisation).

The product is antistatic (AS class 1) and incorporates Sanosol®, an anti-bacterial and fungicidal treatment.

Tarastep Premium



1 ml



TARASTEP PREMIUM is a multilayered calendered and pressed acoustic staircovering yielding a 16 dB sound insulation. It is an all-in-one staircovering incorporating the stair tread, a ribbed nosing in a tonal colour, a stair riser.

TARASTEP PREMIUM incorporates Sanosol®, an anti-bacterial and fungicidal treatment.

→ Accessories

- Easy to install: installation by over lapping











Semi flexible skirting
Vynaflex



Flexible skirting

Refer to the "Technical solutions and finishes" brochure for accessories.

			Taralay Premium Compact	Taralay Premium Comfort	Taralay Premium Comfort	Tarastep Premium	
			Artic - Forum - Fusion - Metallica - Zenium - Brazilia - Costa Rica - Indiana	Artic - Forum - Fusion - Metallica	Brazilia - Costa Rica - Indiana	Brazilia	Indiana
DESCRIPTION							
Total thickness	EN 428	mm	2.00	3.25	3.00	3.30	3.40
Thickness of wearlayer	EN 429	mm	≥ 1.00	≥ 1.00	≥ 1.00	1.00	0.96
Weight	EN 430	g/m ²	2550 - 2800	3130 - 3260	2800	2850	3175
Width / length of sheet	EN 426	cm / ml	200 / 20	200 / 25	200 / 25	100 / 22	100 / 22
CLASSIFICATION							
Standard / product specification	-	-	EN 649	EN 651	EN 651	EN 651	EN 651
European classification	EN 685	class	34-43	34-42	34-42	34-42	34-42
Fire rating	EN 13 501 - 1	class	B _{fl} -s1	C _{fl} -s1	C _{fl} -s1	C _{fl} -s1	C _{fl} -s1
Static electrical charge	EN 1815	kV	< 2	< 2	< 2	< 2	< 2
Slip resistance dry	EN 13893	class	DS	DS	DS	DS	DS
Slip resistance wet	DIN 51 130	-	R9	R9	R9	-	-
PERFORMANCES							
Wear resistance	EN 660.1	mm	≤ 0.08	≤ 0.08	≤ 0.08	≤ 0.08	≤ 0.08
Wear group	-	group	T	T	T	T	T
Dimensional stability	EN 434	%	≤ 0.4	≤ 0.4	≤ 0.4	≤ 0.4	≤ 0.4
Residual indentation	EN 433	mm	≤ 0.1	≤ 0.2	≤ 0.2	≤ 0.2	≤ 0.2
Sound insulation	EN ISO 717-2	dB	-	16	16	16	16
Walking resonance	NFS 31 074	class	-	A	A	A	A
Thermal conductivity	EN 12 524	W/(m.K)	0.25	0.25	0.25	0.25	0.25
Colour fastness	EN 20 105 B02	-	≥ 6	≥ 6	≥ 6	≥ 6	≥ 6
Chemical resistance	EN 423	-	good	good	good	good	good
Anti bacterial and fungicidal	-	-	Sanosol®	Sanosol®	Sanosol®	Sanosol®	Sanosol®
Surface treatment	-	-	ProtecSol®	ProtecSol®	ProtecSol®	-	-
CE MARKING							
CE	EN 14041	-				-	-
		-					

Installation: Laying is the responsibility of the fitter. Installation has to be in accordance with the latest installation instructions available from our Technical Department. Subfloor to be smooth, hard, clean and dry prior to laying. Where applicable the subfloor must incorporate an effective Damp Proof Membrane. The material must be allowed to acclimatise for 24 hours before installation in a room temperature of between 18-24°C. All seams must be heat welded using Gerflor weld rod.



Maintenance: Maintenance should be carried out regularly to retain the appearance and durability of the floor. The floorcovering should be maintained with regular sweeping and damp mopping using a neutral cleanser, or machine scrubbing with an appropriate pad. Further maintenance instructions are available upon request.



Rubber leaves indelible stains on vinyl flooring: do not use mats with rubber backing and replace tubular furniture feet with those made of PVC or polyamide.

AMERICA LATINA (BRASIL): Gerflor América Latina Pisos E Revest. Ltda
Tel.: (55) 11 30 55 2020 - Fax: (55) 11 30 55 2023
e-mail: gerfloramericalatina@gerflor.com

ASIA: Gerflor SA
Tel.: 03-7803 7438 - Fax: 03-7803 3741
e-mail: gerflorasia@gerflor.com

AUSTRALIA/NEW ZEALAND - Gerflor Australasia Pty Ltd
Tel.: 1 800 060 785
e-mail: gerflorpacific@gerflor.com

BENELUX/BELGIQUE/LUXEMBOURG: Gerflor Belgium
Tel.: (32) 03 766 42 82 - Fax: (32) 03 766 29 14
e-mail: gerflorbelgium@gerflor.com

CANADA: Gerflor International
Tel.: (1) 450 538 9828 - Fax: (1) 450 538 9827
e-mail: gerflorcanada@gerflor.com

CHINA: Gerflor (China) Ltd
Tel.: (852) 2142 3728 - Fax: (852) 2834 4795
e-mail: gerflorchina@gerflor.com

DEUTSCHLAND
Gerflor Mipolam GmbH
Tel : 0 22 41-25 30-0 - e-mail : GerflorMipolam@Gerflor.com
Kundenservice - Tel : 0 22 41-25 30 131 -
Fax : 0 22 41-25 30 100 - e-mail : Kundenservice@Gerflor.com
SAT Service & Anwendungstechnik - Tel : 0 22 41-25 30 555 -
Fax : 0 22 41-25 30 550 - e-mail : Technik@Gerflor.com
www.gerflor-mipolam.de

ESPAÑA: Gerflor Iberia SA
Tel.: (34) 91 653 5011 - Fax: (34) 91 653 9525
e-mail: gerfloriberia@gerflor.com

IRELAND: Gerflor Ltd
Sample service: +44 870 264 7581
Tel.: +353 (0) 42 966 1431 - Fax: +353 (0) 42 966 1759
e-mail: gerfloriri@gerflor.com
www.gerflorie

ITALIA: Gerflor S.p.A
Tel.: (39) 02 90 78 60 12 r.a. - Fax: (39) 02 90 42 74 84
e-mail: gerfloritalia@gerflor.com

MIDDLE EAST: Gerflor Middle East
Tel.: (966) 3 847 1779 - Fax: (966) 3 847 1781
e-mail: gerflorME@gerflor.com

NETHERLANDS: Gerflor BV
Tel.: (31) 40 266 17 00 - Fax: (31) 40 257 46 89
e-mail: gerflorNL@gerflor.com

ÖSTERREICH/SCHWEIZ
Gerflor GmbH
Tel : (43) 07229 / 70 800-0 - Fax : (43) 07229 / 70 800-218
e-mail : austria@gerflor.com - e-mail : switzerland@gerflor.com

POLSKA: Gerflor Polska Sp z o.o
Tel.: (48) 61 823 34 01 - Fax: (48) 61 823 34 33
e-mail: info@gerflor.pl

PORTUGAL: Gerflor Iberia SA
Tel.: (351) 21 843 95 49 - Fax: (351) 21 846 55 44
e-mail: gerflorportugal@gerflor.com

RUSSIA: Gerflor Moscow Office
Tel.: +7 495 430-86-54 / +7 495 430-86-65 - Fax: +7 495 430-85-46
e-mail: gerflorrus@mspk.east.ru

SCANDINAVIA: Boide Gerflor Scandinavia a.s.
Tel.: (47) 64 95 60 70 - Fax: (47) 64 95 60 80
e-mail: gerflorscand@gerflor.no

UNITED KINGDOM: Gerflor Ltd
Sample service Tel.: +44 (0) 870 264 7581
Office Tel.: +44 (0) 1926 401 500 - Fax: +44 (0) 1926 401 647
e-mail: ContractUK@gerflor.com
www.gerflor.co.uk

USA: Architectural Floor Systems, Inc
Tel.: (1) 847 394 3944 - Toll free: 8 003 236 792
e-mail: info@gerflorusa.com

OTHER COUNTRIES: Gerflor International
Tél. : (33) 04 74 05 40 00 - Fax : (33) 04 74 05 03 13
e-mail : gerflorcontract@gerflor.com

Education



Retail

Healthcare



Housing

Industry

