

TEXTURE PRODUCTS (AGGREGATED)

PROFORM® BRAND PERFECT SPRAY® ■ PERFECT SPRAY® II



GENERAL INFORMATION

ProForm® Perfect Spray and Perfect Spray II are decorative texture products for fast application to interior ceiling surfaces. Their shredded polystyrene aggregates give these texturing products greater whiteness, better hide and bold accent.

Perfect Spray Texture is a decorative texture product for fast spray application to interior surfaces. Its shredded polystyrene aggregate gives this texturing product greater whiteness, better hide and bold accent. Perfect Spray's texture effectively hides minor surface defects and irregularities.

Perfect Spray II is a competitively priced interior ceiling texture designed for fast spray application. Its white appearance effectively hides minor surface defects and irregularities.

They readily mix with water to deliver the consistency and application control desired.

AGGREGATE SIZE

Perfect Spray

- Coarse, Medium, Fine

Perfect Spray II

- Coarse

FEATURES/BENEFITS

- Shredded polystyrene aggregate.
- Easy mixing, low fallout.
- Designed to work with standard spray equipment.
- Excellent hide characteristics.

SPECIFICATIONS

Bag size	Coverage
40 lbs. (18.1 kg)	300-400 sq. ft. (27.6-36.8 m ²)

Note: Coverage will vary with the type of equipment used and the type of finish desired. Good hide and appearance can be accomplished if it is applied at a rate not to exceed 8-10 sq. ft./lb. (1.6-2 m²/kg). At coverage rates less than 8 sq. ft. per pound, two coats are recommended. Allow the first coat to dry thoroughly before applying the second.

GENERAL APPLICATION

Temperatures should be maintained at a minimum 50°F (10°C), both day and night, before and during spray operations and until sprayed surfaces have fully dried.

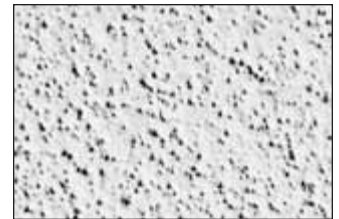
Adequate ventilation should be provided to eliminate excess moisture in the spray booth will aid in drying and will help prevent many problems associated with slow drying of water-based texture products. Use of a respirator and eye protection is recommended during spray application.

Gypsum wallboard: Surfaces, including joint treated areas, must be smooth, clean and dry. First, apply and coat of good quality, sealing latex primer. Mask appropriate areas before spraying, and promptly remove overspray from unprotected surfaces afterward.

Spray textures should not be applied over a vapor barrier spray which is not dry.



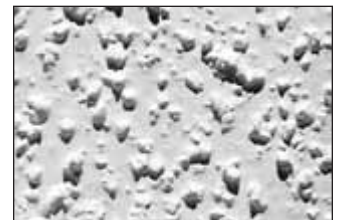
Perfect Spray Ceiling Texture
-Coarse



Perfect Spray Ceiling Texture
-Fine



Perfect Spray Ceiling Texture
-Medium



Perfect Spray II Ceiling Texture

Low Pressure: Hopper-type hand guns should have nozzle openings of 1/4" to 3/8" and operating pressures of 20-30 psi.

High Pressure: Pole guns should have nozzle openings of 1/4" to 3/8", feed pressure of 40-60 psi and air pressure of 80-120 psi at the tank. (As a general rule, air pressure at the tank should be twice that of the material pressure.)

Caution: Avoid creating dust. When mixing, ventilate area, wear eye protection and a NIOSH- or MSHA-approved respirator for dust. Keep out of reach of children.

Note: These are general instructions. Complete, easy-to-follow application guidelines are printed on all bags of ProForm drywall textures. Close adherence to instructions for surface preparation and priming will avoid the problems of color variation, bleeding or sagging and will permit the texture to achieve its full potential.