



Specialty

Unique Performance

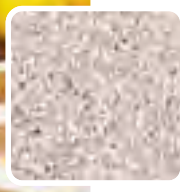
- Slip-retardant products and static-dissipative tile for applications that have special needs

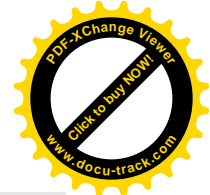
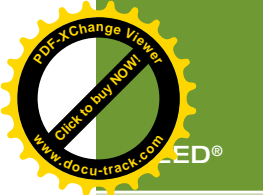
Color Coordination

- Designed to coordinate with our entire product portfolio for a cohesive look beyond special need areas

Low VOC Emissions

- Low VOC emissions – California Section 01350 compliant, third-party FloorScore™ certification and LEED® eligibility





Online: armstrong.com/specialtyflooring

MR4.0	Construction	Slip-retardant sheet.
MR5.0	Width & Length	Sheet: 6 ft. 7 in. (2.0 m) wide, up to 72 ft. (22m) long.
MR6.0	Thickness	0.080 in. (2.0 mm) overall, 0.020 in. (0.5 mm) wear layer.
EQ4.3 ✓	National Avg. Installed Cost	US: \$5.00 – \$5.50 sq. ft. Canada: C\$5.75 – C\$6.25 sq. ft.

 **SAFEGUARD™** for dry areas

FloorScore™ certified

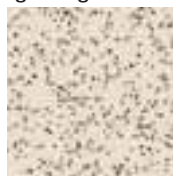
- Slip-retardant sheet for dry areas that require an extra measure of safety
- Excellent performance with slip-retardant grit that is dispersed throughout the wear layer
- Ten colors that coordinate with Armstrong's portfolio of flooring solutions
- Low VOC emissions — California Section 01350 compliant, third-party FloorScore certification and LEED eligibility

39080
light gray



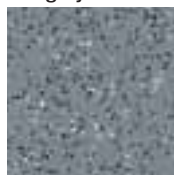
W0310

39041
light beige



W0307

39081
mid gray



W0036

39040
sand



W0306

39082
anthracite



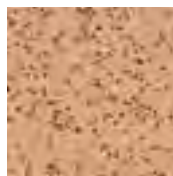
W0314

39060
dark brown



W0308

39061
cinnamon



W0309

39030
light green



W0305

39020
light blue



W0302

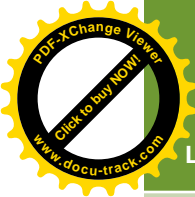
39025
lilac



W0304



SAFEGUARD 39030 light green, 39041 light beige



LEED®

Online: armstrong.com/specialtyflooring

MR4.0	Construction	Slip-retardant sheet.
MR5.0	Width & Length	Sheet: 6 ft. 7 in. (2.0 m) wide, up to 72 ft. (22m) long.
MR6.0	Thickness	0.080 in. (2.0 mm) overall, 0.020 in. (0.5 mm) wear layer.
EQ4.3 ✓	National Avg. Installed Cost	US: \$5.00 – \$5.50 sq. ft. Canada: C\$6.00 – C\$6.50 sq. ft.

 **SAFEGUARD Spa™** for wet areas

FloorScore™ certified

- Slip-retardant sheet designed for wet areas with barefeet or soft-soled shoes. Textured surface provides an added measure of safety
- Excellent performance texture that is dispersed throughout the wear layer
- Five colors that coordinate with Armstrong's portfolio of flooring solutions
- Low VOC emissions — California Section 01350 compliant, third-party FloorScore certification and LEED eligibility



SAFEGUARD Spa 39516 light gray

39520
granite



W0405

39516
light gray



W0592

39508
corn



W0099

39523
seafoam

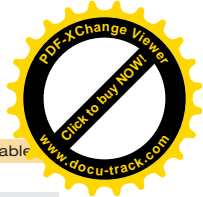
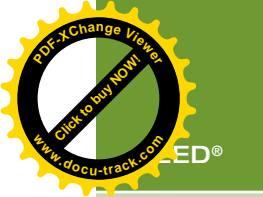


W0023

39524
cornflower



W0024



Online: armstrong.com/specialtyflooring

S-515

High-moisture warranty available

MR4.0	✓
MR5.0*	✓
MR6.0	
EQ4.3	✓

Construction	Slip-retardant tile.
Width & Length	Tile: 12 in. (305 mm) x 12 in. (305 mm).
Thickness	1/8 in. (3.2 mm).
National Avg. Installed Cost	US: \$3.25 – \$3.75 sq. ft. Canada: C\$4.50 – C\$5.00 sq. ft.

*Depends on project location

SAFETY ZONE™

FloorScore™ certified

- Slip-retardant tile for wet and dry areas that require an extra measure of safety
- True through-pattern construction provides extended floor life outperforming through-color only products
- Range of colors that coordinate with Armstrong's portfolio of flooring solutions
- Low VOC emissions — California Section 01350 compliant, third-party FloorScore certification and LEED eligibility

57002
weathered alabaster



57003
patina green



57001
shale gray



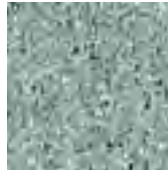
57005
stone beige



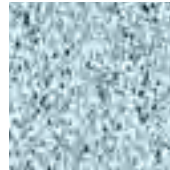
57000
earth stone



57009
forest floor



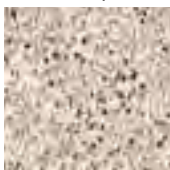
57007
babbling brook



57004
slate black



57006
cobblestone peach



57008
soft cedar



57012
dark basil



57010
river rock





LEED®

MR4.0	✓
MR5.0*	✓
MR6.0	
EQ4.3	✓

Online: armstrong.com/specialtyflooring

Construction	Static dissipative tile.
Width & Length	Tile: 12 in. (305 mm) x 12 in. (305 mm).
Thickness	1/8 in. (3.2 mm).
National Avg. Installed Cost	US: \$5.50 – \$6.00 sq. ft. Canada: C\$6.50 – C\$7.00 sq. ft.

*Depends on project location

SDT™

FloorScore™ certified

- Dissipates static charges to increase safety and prevent damage to sensitive equipment
- Four-part system, including: a special adhesive, copper grounding strips, SDT tile and polish
- Traditional visual and neutral colors that coordinate with Armstrong's portfolio of flooring solutions
- Low VOC emissions — California Section 01350 compliant, third-party FloorScore certification and LEED eligibility

51953
pearl white



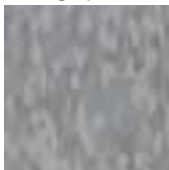
51951
armor gray



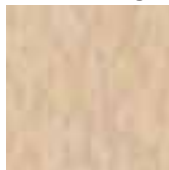
51950
marble beige



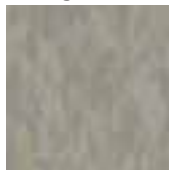
51956
fossil gray



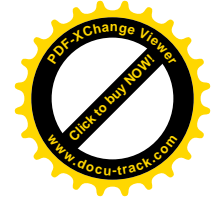
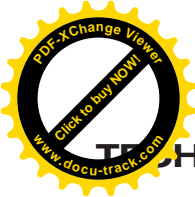
51954
sandstone beige



51955
moss green



SDT 51951 armor gray, 51954 sandstone beige, 51955 moss green, 51956 fossil gray



TECHNICAL INFORMATION

Comparative Data*

Products (5)	Overall Thickness (nominal) (1)	Wear Layer (nominal) (1)	Static Load Limit PSI (kg/cm ²) (2, 2a, 2b)	Durability (3)	Maintainability (3)	Resilience (3)	Reference Specs (4)
SAFEGUARD™ SAFEGUARD Spa™	0.080 in. (2.0 mm)	0.020 in. (0.5 mm)	500 (35.16) (2b)	VG	G	E	ASTM F 1303
SAFETY ZONE™	1/8 in. (3.2 mm)	–	125 (8.79) (2a)	VG	G	G	ASTM F 1066, Class 2 – through-pattern
SDT™	1/8 in. (3.2 mm)	–	75 (5.27) (2a)	VG	G	G	ASTM F 1066, Class 2 – through-pattern

- Overall and wear layer thicknesses are nominal and subject to normal manufacturing variances.
- PSI: lbs./sq. in.
 - Static Load Limit per ASTM F 970
 - Static Load Limit per ASTM F 970 modified by specifying a higher load on a smaller diameter tip. All other test conditions are standard.
- Subjective ratings (Excellent, Very Good, Good, Fair) are in relation to other Armstrong® commercial resilient floors. Ratings are not directly related to any one test. They are broadly based on tests and experience of Armstrong R & D under varying conditions and circumstances. These ratings should NOT be used for comparison to ratings used by other manufacturers to rank their own products.
- Reference Specifications: Armstrong products are manufactured to meet or exceed specification requirements, except as noted.

SAFEGUARD and SAFEGUARD Spa meet physical property requirements for overall thickness, residual indentation, flexibility, static load resistance, resistance to chemicals,

resistance to heat and resistance to light. SAFEGUARD products have unique characteristics and are not described by ASTM standards. SAFETY ZONE meets requirements for size, thickness, squareness, indentation, impact, deflection, dimensional stability, resistance to chemicals and resistance to heat. SDT meets requirements for size, thickness, squareness, indentation, impact, dimensional stability, resistance to chemicals and resistance to heat.

Electrical Properties

Installed as a system using the recommended adhesive, grounding strips and polish, SDT yields the following electrical properties:

- Resistance: ANSI / ESD-S7.1 and ASTM F-150
Point to point and point to ground: 10⁶ to 10⁹ ohms
- Static Generation: ANSI / ESD STM 97.2
(flooring in combination with footwear and a person)
@ 40% R.H. with Dissipative footwear: < 10 volts;
@ 12% R.H. with Dissipative footwear: < 10 volts

Static Dissipation @ 12% R.H.: Flooring in combination with a person wearing dissipative footwear:
1000 to 100 volts: 0.2 seconds avg.

- All products meet the following Fire Test Data:
 - ASTM E 648 Flooring Radiant Panel Critical Radiant Flux – 0.45 watts/cm² or more, Class I
 - ASTM E 662 Smoke Chamber Specific Optical Smoke Density – 450 or less.
 Numerical flammability ratings alone may not define product performance under actual fire conditions. These ratings are provided only for use in the selection of products to meet specified limits.

Tile Adhesives

Product	Subfloor				Existing Resilient Floor	Comments
	Wood	Concrete	Ceramic, Terrazzo, Marble	Metal		
SAFETY ZONE	S-515, S-700, S-750 or S-230 Epoxy	S-89, S-515, S-700, S-750 or S-230 Epoxy	S-89, S-515, S-700, S-750 or S-230 Epoxy	S-89 ¹ , S-700 or S-230 Epoxy	S-515 or S-750 or S-230 Epoxy	Roll with 100-lb. roller. Lay arrows in same direction.
SDT	S-202	S-202	S-202. First apply a 1/4 in. thickness of S-194 Patch: Underlayment & Embossing Leveler		Not recommended	Roll with 100-lb. roller. Install copper grounding strips with S-202 Adhesive.

*For Metal, S-89 may only be used over steel, stainless steel, aluminum and lead.

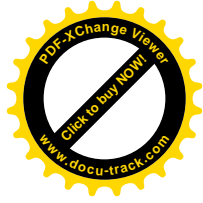
Sheet Adhesives

Product	Adhesives	Seams
SAFEGUARD	S-599 full-spread or S-230 Epoxy full-spread S-599/S-230 Epoxy Perimeter Plus Method S-580 in flash cove areas only	Recess scribe and heat-weld
SAFEGUARD Spa	S-599/S-230 Epoxy Perimeter Plus Method and Epoxy around floor drains S-580 in flash cove areas only	Recess scribe and heat-weld

Maintenance

Product	Polish	Low-Maintenance Options	
		No Polish Spray Buff	No Polish Dry Buff
SAFEGUARD SAFEGUARD Spa	See Notes 1 and 2	Not recommended	Not recommended
SAFETY ZONE	✓ See Notes 2 and 3	Not recommended	Not recommended
SDT	✓ See Note 4	Not recommended	Not recommended

- Note 1:** Because SAFEGUARD and SAFEGUARD Spa are designed for slip retardance, floor polish is not recommended. Most floor polishes will adversely affect the slip-retardant properties. These products can be maintained using traditional dry mopping, wet mopping and scrubbing procedures. They should not be buffed or burnished.
- Note 2:** Due to the textured surfaces and abrasive nature of these products, the use of scrubbing brushes is highly recommended. Do not use stiff-bristled, highly abrasive brushes as they may damage the floor.
- Note 3:** The uniquely textured surface of SAFETY ZONE requires that close attention be paid to maintenance. Using conventional commercial floor finishes makes maintenance of the embossed surface easier. Do not use too much floor finish because it will reduce the slip-retardant characteristics of the tile's surface.
- Note 4:** Use only Armstrong S-392 Static Dissipative Polish. Using other polishes or sealers may interfere with the electrical properties and/or appearance of this flooring.
- For detailed maintenance information, recommendations and procedures, see [Armstrong Commercial Resilient Flooring Maintenance Recommendations](#) booklet, F-8663, or go to armstrong.com/flooring.



Light Reflectivity Values in Percent

Slip-Retardant Sheet and Tile													
0-9	10-14	15-19	20-24	25-29	30-34	35-39	40-44	45-49	50-54	55-59	60-64	65-69	70-74
39060	57012	39524		39081	39020	39025	39516	39040	39080	39041	57002		
39082				39523	57009	39030	57000	57007	57005	39520			
57004				57008		39061	57001		57006				
				57010		39508	57003						
Electrostatic Discharge Control													
0-9	10-14	15-19	20-24	25-29	30-34	35-39	40-44	45-49	50-54	55-59	60-64	65-69	70-74
				51955		51950	51954				51953		
				51956		51951							

Measured under incandescent illumination (ASTM 1347). Types and patterns tested here are those most suited to commercial interiors where reflectivity is a major factor. Ratings for other patterns available upon specific request.

National Average Installed Cost per Square Foot

Specialty Flooring	US Dollars	Canadian Dollars
SAFETY ZONE™	\$3.25 – \$3.75	C\$4.50 – C\$5.00
SAFEGUARD™	\$5.00 – \$5.50	C\$5.75 – C\$6.25
SAFEGUARD Spa™	\$5.00 – \$5.50	C\$6.00 – C\$6.50
SDT™	\$5.50 – \$6.00	C\$6.50 – C\$7.00

Prices are approximations only. Actual prices will vary based on competitive bidding, local labor costs and job conditions. Estimated prices include material and labor figured on a 500-square-foot (46.45-square-meter) open-area installation without any special cuttings or special subfloor preparation.