

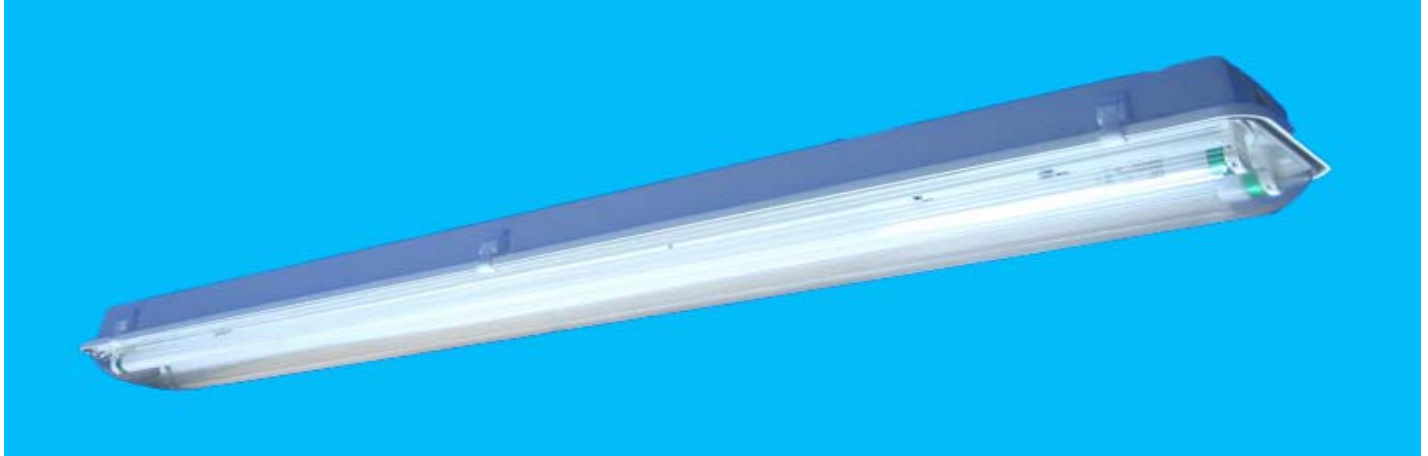


## GASKETED ENCLOSURE

(FOR WET AND DAMP LOCATIONS)

**IPGE-SERIES**

**2 FT., 4 FT. OR 8 FT. LENGTH**



**APPLICATION:** Gasketed Enclosure lamp fixtures are particularly designed for food processing facilities, kitchens, parking garages, car washes, schools, government facilities, industrial facilities, public areas, gas stations, subways, road toll plazas and refrigeration units. Also, made to order for sub-zero applications.

**CONSTRUCTION:** Composed of a structurally rigid fiberglass body of reinforced polyester, which is self-extinguishing (ASTM D635-74). This type of construction does not allow the body to flex during handling and installation. A permanently poured in place gasket affords a hermetically positive seal. This allows for the diffuser to be securely positioned against the body, thereby keeping out moisture, dirt, insects, etc.

**ELECTRICAL WIRING:** Supplied with a high frequency class "A" sound rating class "P" thermally protected, High Power Factor electronic ballast with total harmonic distortion of less than 10%. This multi-volt ballast will operate T8 lamps from 50/60 Hz input source of 120V through 277V. U.L. approved, CBM certified, meets CSA Standards. Complies with U.S.A. National Energy efficiency standards. Optional: Dimming Ballast, Backup Power Pack and High Output (HO) available on special order.

**SHIELDING:** Impact resistant lens with linear prism ribs, controls lamp image and improves light distribution along with better light output. Its newly developed lens geometry makes corners less prone to damage.

### ORDERING INFORMATION:

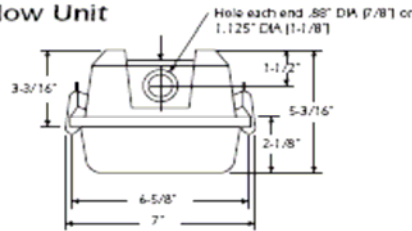
<b>TWO (2) FOOT</b>		
<u>LAMPS</u>	<u>LAMP TYPE</u>	<u>PART NUMBER</u>
2 EA.	17W-T8	IPGE-217/MV

<b>FOUR (4) FOOT</b>		
<u>LAMPS</u>	<u>LAMP TYPE</u>	<u>PART NUMBER</u>
1 EA.	32W-T8	IPGE-132/MV
2 EA.	32W-T8	IPGE-232/MV
3 EA.	32W-T8	IPGE-332/MV
2 EA.	44W-T8	IPGE-244/MV-HO

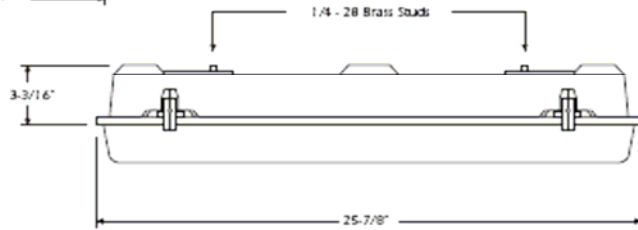
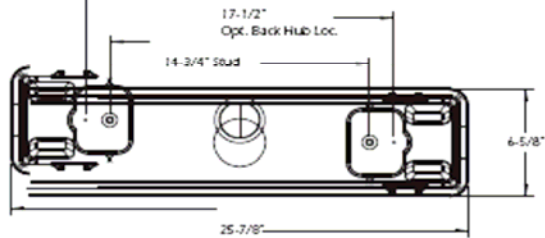
<b>EIGHT (8) FOOT</b>		
<u>LAMPS</u>	<u>LAMP TYPE</u>	<u>PART NUMBER</u>
1 EA.	59W-T8	IPGE-159/MV
2 EA.	59W-T8	IPGE-259/MV
4 EA.	32W-T8	IPGE-432-96/MV
2 EA.	86W-T8	IPGE-286/MV-HO

## 2 Foot Enclosure

Shallow Unit

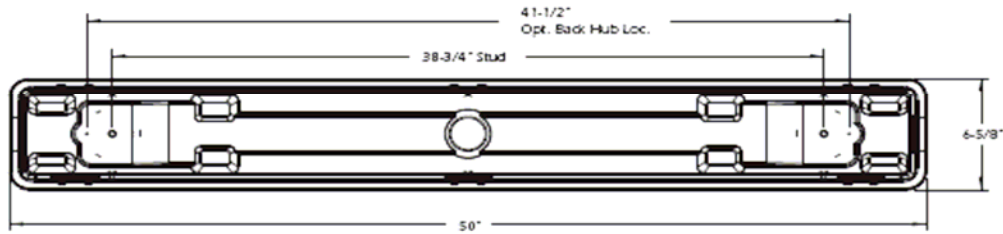


External Top View

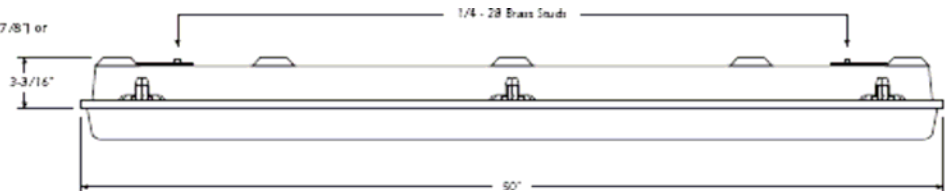
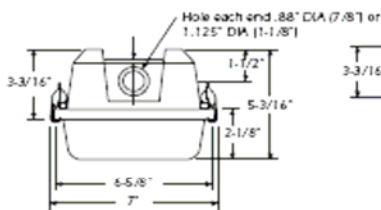


## 4 Foot Enclosure

External Top View

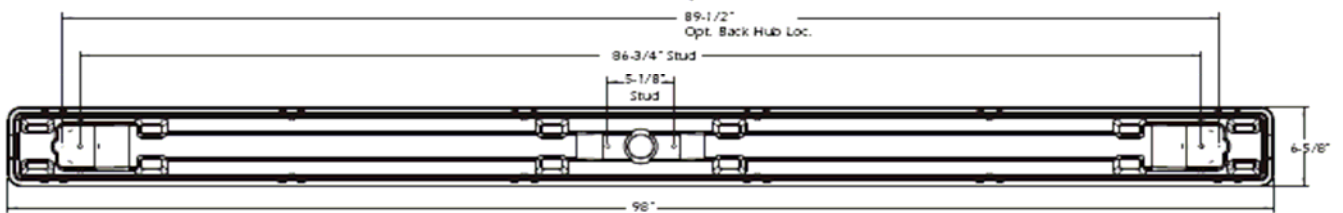


Shallow Unit



## 8 Foot Enclosure

External Top View



Shallow Unit

