



ILLUMINATION PRODUCTS, INC.

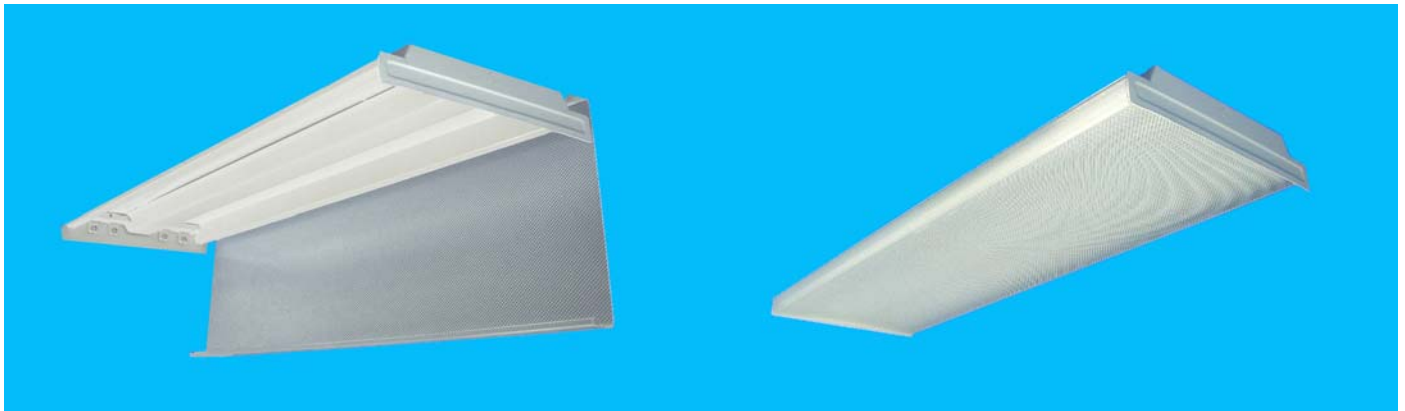
Manufacturers of Fluorescent Lighting Fixtures

WRAP AROUND

(16" WIDE)

IPW-SERIES

4 FT. OR 8 FT. LONG



APPLICATION: Wrap-Around series fixtures combine the practical aspect of maximum light output with the decorative features of low surface brightness. It is ideal for schools, offices or in any area where unobstructed lighting is needed.

CONSTRUCTION: Made from heavy-duty iron phosphate treated CRS (Cold Rolled Steel) and finished with a high-reflectivity electromagnetic-applied powder coat for a minimum reflectance of 90%, thereby, yielding high lumen efficiency. Die formed for extra strength and rigidity.

ELECTRICAL WIRING: Supplied with a high frequency class "A" sound rating class "P" thermally protected, High Power Factor electronic ballast with total harmonic distortion of less than 10%. This multi-volt ballast will operate T8 lamps from 50/60 Hz input source of 120V through 277V. U.L. approved, CBM certified,

meets CSA Standards. Complies with U.S.A. National Energy efficiency standards. Optional: Dimming Ballast and Backup Power Pack available on special order.

SHIELDING: UV stabilized prismatic lens, 1/8" nom. thickness. Permits a high amount of light diffusion and has an attractive cosmetic appearance.

ORDERING INFORMATION:

FOUR (4) FOOT

<u>LAMPS</u>	<u>LAMP TYPE</u>	<u>PART NUMBER</u>
4 EA.	32W-T8	IPW-432/MV

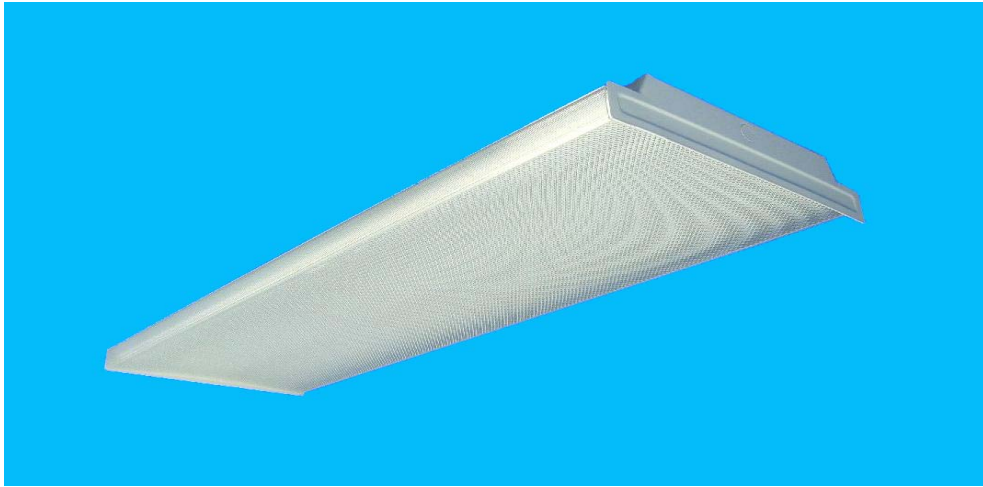
EIGHT (8) FOOT

<u>LAMPS</u>	<u>LAMP TYPE</u>	<u>PART NUMBER</u>
4 EA.	59W-T8	IPW-459/MV
8 EA.	32W-T8	IPW-832-96/MV

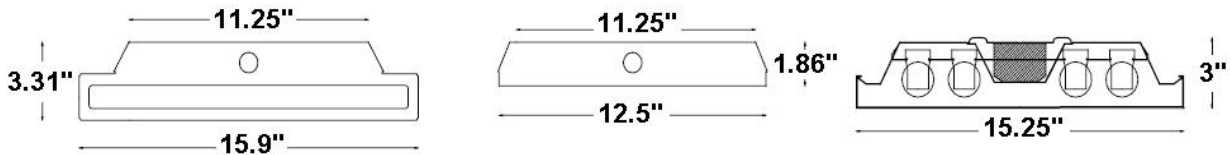


WRAP AROUND (16" WIDE)

IPW-SERIES 4 FT. OR 8 FT. LONG



END VIEW & CROSS-SECTION



BACKPLAN

