





VCT

Expanded Color Options

- Stonetex®, featuring CONTINUUM™, a simple, organized tonal step system that unites hue, value and chroma. This expanded and flexible range of color options offers fast and easy color selection.
- The first and only company to step outside the 12 in. x 12 in. box, Armstrong re-energizes vision and value with its new Stonetex® 18 in. x 18 in. tile

Trusted Knowledge

- Decades of industry-leading, cost-effective VCT performance, durability and quality
- Through-pattern construction provides extended floor life, outperforming through-color-only products

Responsible Choices

- Composed of 85% North American limestone, an abundant natural resource
- Regional manufacturing and raw material sources reduce environmental impact from transportation
- Over 7,000,000 pounds of recycled content used in Armstrong® VCT per year for over ten years
- Low VOC emissions – California Section 01350 compliant, third-party FloorScore™ certification and LEED® eligibility



LEED®

Online: armstrong.com/vct

S-515 High-moisture warranty available. See page 122 for details.

MR4.0	✓
MR5.0*	✓
MR6.0	
EQ4.3	✓

Construction	Vinyl composition tile.
Width & Length	Tile: 12 in. (305 mm) x 12 in. (305 mm), 18 in. (457 mm) x 18 in. (457 mm).
Thickness	1/8 in. (3.2 mm).
National Avg. Installed Cost	US: \$2.25 – \$2.75 sq. ft. Canada: C\$3.00 – C\$3.50 sq. ft.

*Depends on project location

new colors

new

EXCELON® Stonetex® featuring **CONTINUUM™**
COLOR + DESIGN

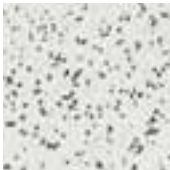
FloorScore™ certified

- Granite-like visual and organic colors in a true non-directional tile featuring CONTINUUM™, an exclusive color system organized in tonal steps to unite hue, value and chroma
- True through-pattern construction provides extended floor life outperforming through-color only products
- Low VOC emissions – California Section 01350 compliant, third-party FloorScore certification and LEED eligibility

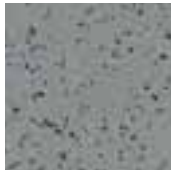
52127
stone white



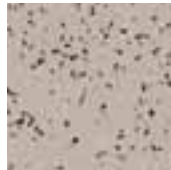
52140
chalk white



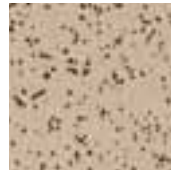
52125
granite gray



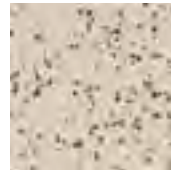
52122
pebble gray



52143
sandstone tan



52128
desert dust



52165
milky way



52139
limestone beige



52126
gravel blue



52161
charcoal



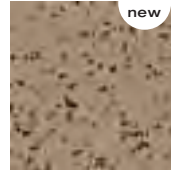
52162
cement



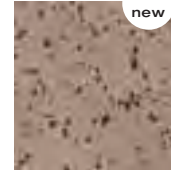
52149
cocoa brown



52168
golden fossil



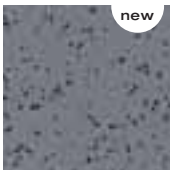
52166
mochaccino



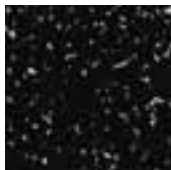
52156
bamboo yellow



52160
hematite



52144
coal black



52147
pumice stone



52164
dark chocolate



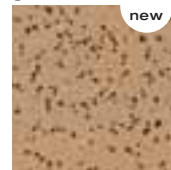
52169
ammonite



52167
semi sweet



52170
golden bamboo





52171
flux

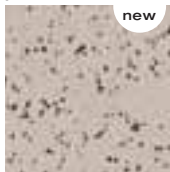


Stonetex® 52135 mineral dust, 52143 sandstone tan, 52164 dark chocolate, 52185 canyon stone

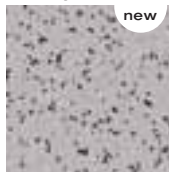
52172
chamotte



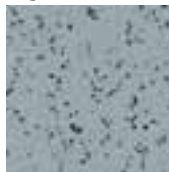
52174
powdered tea rose



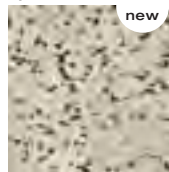
52177
amethyst dust



52141
flagstone blue



52180
spanish moss



52181
myrrh powder



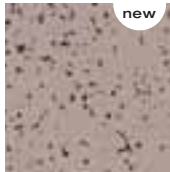
52184
coconino sandstone



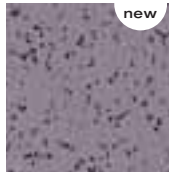
52173
unfired clay



52175
teaberry



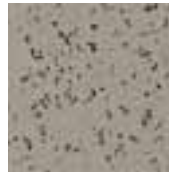
52178
cowrie shell



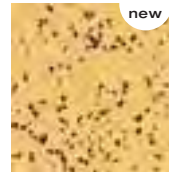
52135
mineral dust



52155
forest moss



52182
sweet amber



52185
canyon stone



52157
clay red



52176
currant tea



52179
black jewel orchid



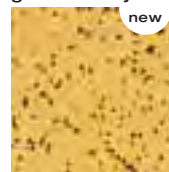
52148
blue spruce



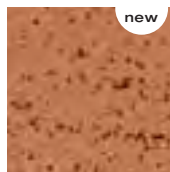
52154
leaf green



52183
golden honey



52186
hermit shale



LEED®

Online: armstrong.com/vct

S-515 High-moisture warranty available. See page 122 for details.

MR4.0	✓
MR5.0*	✓
MR6.0	
EQ4.3	✓

Construction	Vinyl composition tile.
Width & Length	Tile: 12 in. (305 mm) x 12 in. (305 mm), 18 in. (457 mm) x 18 in. (457 mm).
Thickness	1/8 in. (3.2 mm).
National Avg. Installed Cost	US: \$2.25 – \$2.75 sq. ft. Canada: C\$3.00 – C\$3.50 sq. ft.

*Depends on project location

new colors

new

EXCELON® Stonetex® (cont.) featuring CONTINUUM™

COLOR + DESIGN

FloorScore™ certified

- Granite-like visual and organic colors in a true non-directional tile featuring CONTINUUM™, an exclusive color system organized in tonal steps to unite hue, value and chroma
- True through-pattern construction provides extended floor life outperforming through-color only products
- Low VOC emissions – California Section 01350 compliant, third-party FloorScore certification and LEED eligibility



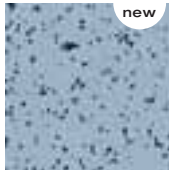
52187 palermo sand



52190 viola



52193 light ultramarine



52195 tidal foam



52198 katydid



52201 mellow yellow



52188 venetian rose



52191 hyacinth



52194 lapis



52196 aquamarine



52199 iguana



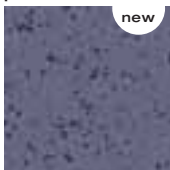
52202 lime rickey



52189 roman clay



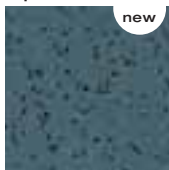
52192 passion flower



52152 blue ash



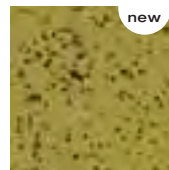
52197 aquas



52200 rainforest green



52203 absinthe



MR4.0	✓
MR5.0*	✓
MR6.0	
EQ4.3	✓

Construction	Vinyl composition tile.
Width & Length	Tile: 12 in. (305 mm) x 12 in. (305 mm).
Thickness	1/8 in. (3.2 mm).
National Avg. Installed Cost	US: \$2.25 – \$2.75 sq. ft. Canada: C\$3.00 – C\$3.50 sq. ft.

*Depends on project location

ARTEFFECTS®

FloorScore™ certified

- Earth tones create a textural look that coordinates with Armstrong's portfolio of flooring solutions
- Distinctive, non-directional visual for seamless looking installation
- Low VOC emissions – California Section 01350 compliant, third-party FloorScore certification and LEED eligibility

57215
zinc white



57200
parchment beige



57208
saxon blue



57217
antique papyrus



57201
silverpoint



57202
canvas beige



57204
pissarro cream



57216
intaglio gray



57209
water garden blue



57210
umber green



57206
fresco red



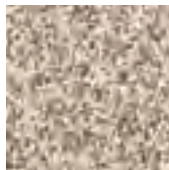
57213
charcoal stick



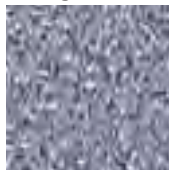
57203
pastel beige



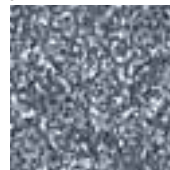
57205
silver sable



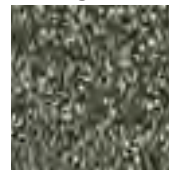
57218
violet glaze



57214
paris blue



57211
mezzo green



57207
roman red



MR4.0	✓
MR5.0*	✓
MR6.0	
EQ4.3	✓

Construction	Vinyl composition tile.
Width & Length	Tile: 12 in. (305 mm) x 12 in. (305 mm).
Thickness	1/8 in. (3.2 mm).
National Avg. Installed Cost	US: \$2.25 – \$2.75 sq. ft. Canada: C\$3.00 – C\$3.50 sq. ft.

*Depends on project location

EXCELON® Companion Square®

FloorScore™ certified

- Design flexibility offered with four accent colors randomly occurring on each tile with a neutral background
- True through-pattern construction provides extended floor life outperforming through-color only products
- Low VOC emissions – California Section 01350 compliant, third-party FloorScore certification and LEED eligibility

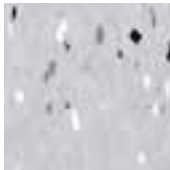


EXCELON Companion Square 51983 party white

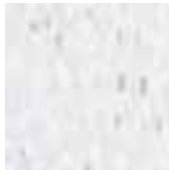
51973
mono white



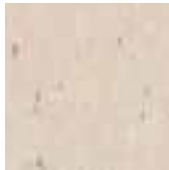
51972
mono gray



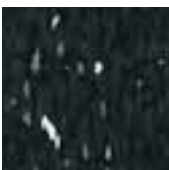
51977
kaleidoscope white



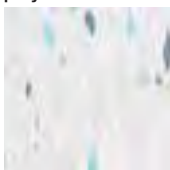
51980
multi ecru



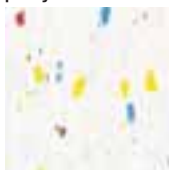
51970
mono black



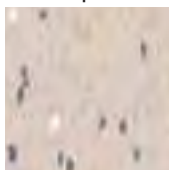
51974
polychrome white



51983
party white



51976
multi taupe



MR4.0	✓
MR5.0*	✓
MR6.0	
EQ4.3	✓

Construction	Vinyl composition tile.
Width & Length	Tile: 12 in. (305 mm) x 12 in. (305 mm).
Thickness	1/8 in. (3.2 mm).
National Avg. Installed Cost	US: \$1.75 – \$2.25 sq. ft. Canada: C\$1.75 – C\$2.25 sq. ft.

*Depends on project location

Standard EXCELON® Imperial® Texture Rave®

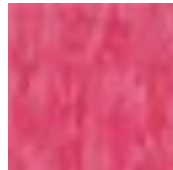
FloorScore™ certified

- Bold, inspiring colors with eye-popping intensity that coordinate with Armstrong's portfolio of flooring solutions
- True through-pattern construction provides extended floor life outperforming through-color only products
- Low VOC emissions – California Section 01350 compliant, third-party FloorScore certification and LEED eligibility



IMPERIAL TEXTURE 57510 kickin' kiwi, 57512 bikini blue, 57515 hot lips

57514 shocking



57509 lemon lick



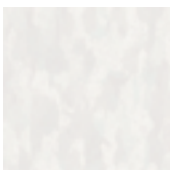
57510 kickin' kiwi



57512 bikini blue



57518 white out



57513 vicious violet



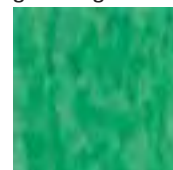
57515 hot lips



57516 screamin' pumpkin



57511 grabbin' green



57517 bodacious blue



MR4.0	✓
MR5.0*	✓
MR6.0	
EQ4.3	✓

Construction	Vinyl composition tile.
Width & Length	Tile: 12 in. (305 mm) x 12 in. (305 mm).
Thickness	1/8 in. (3.2 mm) and 3/32 in. (2.4 mm).
National Avg. Installed Cost	US: \$1.75 – \$2.25 sq. ft. Canada: C\$1.75 – C\$2.25 sq. ft.

*Depends on project location

*1/8 in. and 3/32 in. stocked. All other patterns stocked in 1/8 in. with 3/32 in. available on a special order basis, minimum order quantity of 1,000 cartons or 45,000 sq. ft. (4,181 m²).

Standard EXCELON® Imperial® Texture

FloorScore™ certified

- The broadest selection of colors available that coordinate with Armstrong's portfolio of flooring solutions
- True through-pattern construction provides extended floor life outperforming through-color only products
- Low VOC emissions – California Section 01350 compliant, third-party FloorScore certification and LEED eligibility

51911 classic white



51899 cool white*



51811 antique white



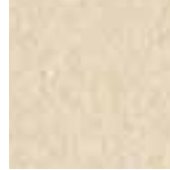
51810 washed linen



51803 pearl white



51809 desert beige



51805 camel beige



51915 charcoal



51941 polar white



51861 soft warm gray



51804 earthstone greige



51873 brushed sand



51942 curried caramel



57501 nougat



51910 classic black



51904 sterling



51860 soft cool gray



51868 smokey brown



51869 humus



51948 cinnamon brown



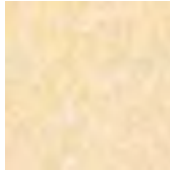
57504 chocolate



51878
golden



51800
buttercream yellow



51867
cantaloupe



51932
lunar blue



51807
shadow blue



51938
willow green



51877
earth green



51812
lemon yellow



51813
pumpkin orange



51879
etruscan red



51881
blueberry



57508
blue dreams



51883
dusty miller



51885
granny smith



51801
doeskin peach



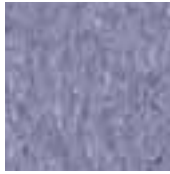
57503
bubblegum



57505
rose hip



51934
lavender shadow



51916
dutch delft



51872
tea garden green



51866
little green apple



51876
mint cream



51880
maraschino



57507
dusty plum



51818
violet bloom



51874
grayed blue



51802
silver green



51824
sea green



57502
café latte



51816
cherry red



51943
cayenne red



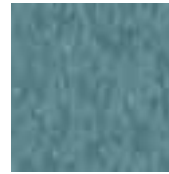
51821
caribbean blue



51882
serene blue



57506
colorado stone



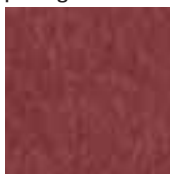
51884
greenery



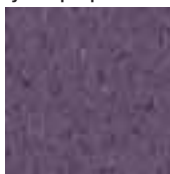
57500
purple brown



51814
pomegranate red



51944
tyrian purple



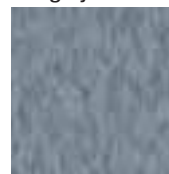
51820
marina blue



51946
gentian blue



51875
mid grayed blue



51947
basil green



MR4.0	✓
MR5.0*	✓
MR6.0	
EQ4.3	✓

Construction	Vinyl composition tile.
Width & Length	Tile: 12 in. (305 mm) x 12 in. (305 mm).
Thickness	1/8 in. (3.2 mm) and 3/32 in. (2.4 mm).
National Avg. Installed Cost	US: \$1.75 – \$2.25 sq. ft. Canada: C\$1.75 – C\$2.25 sq. ft.

*Depends on project location

*1/8 in. and 3/32 in. stocked. All other patterns stocked in 1/8 in. with 3/32 in. available on a special order basis, minimum order quantity of 1,000 cartons or 45,000 sq. ft. (4,181 m²).

Standard EXCELON® Imperial® Texture Classics

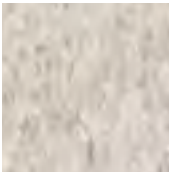
FloorScore™ certified

- Classic tone-on-tone VCT visual; neutral colors that coordinate with Armstrong's portfolio of flooring solutions
- True through-pattern construction provides extended floor life outperforming through-color only products
- Low VOC emissions – California Section 01350 compliant, third-party FloorScore certification and LEED eligibility



Imperial Texture 51906 teal, 51932 lunar blue, 51946 gentian blue
MultiColor™ 52506 rodeo fawn

51836
shelter white*



51929
sandy beach



51830
cottage tan*



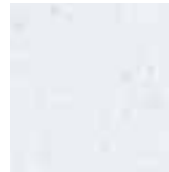
51839
fortress white*



51928
pebble tan



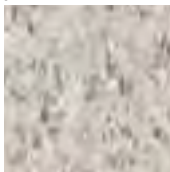
51933
blue cloud



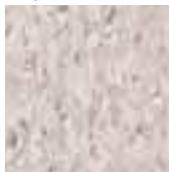
51927
field gray



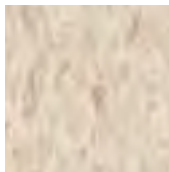
51908
pewter



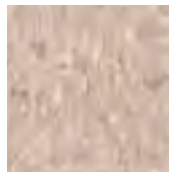
51901
taupe



51858
sandrift white*



51905
hazelnut



51903
blue/gray



51906
teal



MR4.0 ✓

MR5.0* ✓

MR6.0

EQ4.3 ✓

Construction	Vinyl composition tile.
Width & Length	Tile: 12 in. (305 mm) x 12 in. (305 mm).
Thickness	1/8 in. (3.2 mm).
National Avg. Installed Cost	US: \$1.75 – \$2.25 sq. ft. Canada: C\$1.75 – C\$2.25 sq. ft.

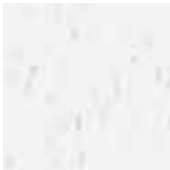
*Depends on project location

Standard EXCELON® MultiColor™

FloorScore™ certified

- Design flexibility — each tile consists of three base colors and four accent colors that coordinate with Imperial® Texture
- True through-pattern construction provides extended floor life outperforming through-color only products
- Low VOC emissions – California Section 01350 compliant, third-party FloorScore certification and LEED eligibility

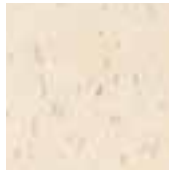
52500
carnival white



52505
harlequin white



52506
rodeo fawn



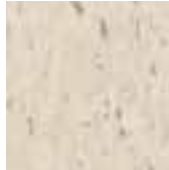
52513
cirque white



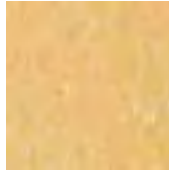
52514
jubilee white



52520
faire white



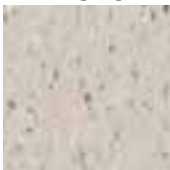
52516
soleil yellow



52521
mint masquerade



52515
coaster greige



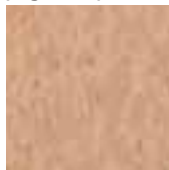
52525
pie car



52523
animal crackers



52524
pageant spice



52517
jester red



52518
band blue



52522
acrobat green



- MR4.0 ✓
- MR5.0* ✓
- MR6.0
- EQ4.3 ✓

*Depends on project location

Construction	Vinyl composition tile.
Width & Length	Tile: 12 in. (305 mm) x 12 in. (305 mm). Strips: 1 in. (2.54 cm), 2 in. (5.08 cm), 3 in. (7.62 cm), 4 in. (10.16 cm) and 6 in. (15.25 cm) x 24 in. (60.96 cm).
Thickness	1/8 in. (3.2 mm).
National Avg. Installed Cost	Black: US: \$2.50 – \$3.00 sq. ft. Canada: C\$3.25 – C\$3.75 sq. ft. Colors: US: \$3.00 – \$3.50 sq. ft. Canada: C\$3.50 – C\$4.00 sq. ft.

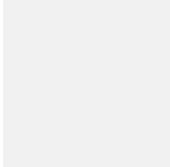
Tile: 56 ___ Strips: 50 ___

EXCELON® Feature™ Tile & Strips

FloorScore™ certified

- Solid color accessory tile and strips make it easy to create custom designs, insets, borders and wayfinding
- Pre-cut strips reduce errors and costly material waste from on-site cutting — lowering installation costs
- Low VOC emissions – California Section 01350 compliant, third-party FloorScore certification and LEED eligibility

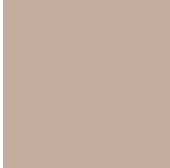
56830 / 50830
chalk II



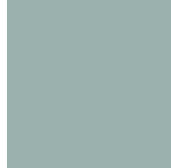
56823: 12"x12"



56814 / 50814
taupe II



56815 / 50815
teal II



56823 / 50823
yellow II



1" x 24" Color number plus "791" suffix



2" x 24" Color number plus "441" suffix



3" x 24" Color number plus "461" suffix



4" x 24" Color number plus "991" suffix



56790 / 50790
black I



56812 / 50812
blue II



56806 / 50806
red II



6" x 24" Color number plus "431" suffix



MR4.0	✓
MR5.0*	✓
MR6.0	
EQ4.3	✓

Construction	Vinyl composition tile.
Width & Length	Standard shuffleboard size. Standard basketball court dimensions for college, high school and junior high.
Thickness	1/8 in. (3.2 mm).
National Avg. Installed Cost	Varies.

*Depends on project location

EXCELON® Tile Insets

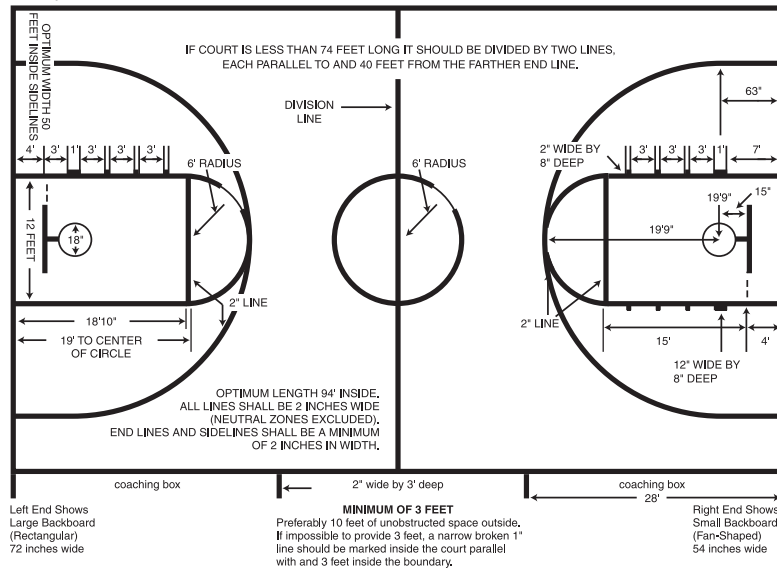
FloorScore™ certified

- Pre-cut insets reduce errors and costly material waste from on-site cutting — lowering installation costs
- Ships complete with all product pieces numbered and labeled for easy identification and installation
- Low VOC emissions – California Section 01350 compliant, third-party FloorScore certification and LEED eligibility

Basketball Court Unit 50517-831

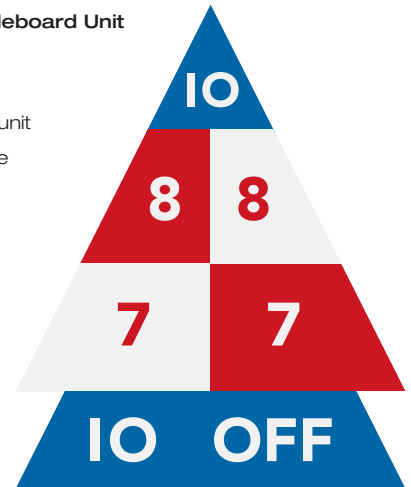
- All official court boundary lines, circular markings and 3-point goal lines
- Standard court dimensions for college, high school and junior high
- All lines are black

College 50' x 94'
High School 50' x 84'
Junior High 42' x 74'



Standard Shuffleboard Unit 50509

- 3 ft. x 3 ft. 9 in.
- Two ends per unit
- Red/white/blue



TECHNICAL INFORMATION

Comparative Data

Products (5)	Overall Thickness (nominal) (1)	Static Load Limit PSI (kg/cm ²) (2, 2a)	Durability (3)	Maintainability (3)	Resilience (3)	Reference Specs (4)
Stonetex®	1/8 in. (3.2 mm)	125 (8.8)	VG	G	G	ASTM F 1066, Class 2 through-pattern
ARTEFFECTS®	1/8 in. (3.2 mm)	125 (8.8)	G	G	G	ASTM F 1066, Class 3 – surface pattern
MultiColor™	1/8 in. (3.2 mm)	125 (8.8)	VG	G	G	ASTM F 1066, Class 2 through-pattern
Imperial® Texture	1/8 in. (3.2 mm) 3/32 in. (2.4 mm)	125 (8.8)	VG G (3/32)	G	G	ASTM F 1066, Class 2 through-pattern
Rave®	1/8 in. (3.2 mm)	125 (8.8)	VG	G	G	ASTM F 1066, Class 2 through-pattern
Companion Square®	1/8 in. (3.2 mm)	125 (8.8)	VG	G	G	ASTM F 1066, Class 2 through-pattern
Feature™ Tile & Strips (6)	1/8 in. (3.2 mm)	125 (8.8)	VG	F (6)	G	ASTM F 1066, Class 1 – solid color

- Overall and wear layer thicknesses are nominal and subject to normal manufacturing variances.
- PSI: lbs./sq. in.
 - Static Load Limit per ASTM F 970
- Subjective ratings (Excellent, Very Good, Good, Fair) are in relation to other Armstrong® commercial resilient floors. Ratings are not directly related to any one test. They are broadly based on tests and experience of Armstrong R & D under varying conditions and circumstances. These ratings should NOT be used for comparison to ratings used by other manufacturers to rank their own products.

- Reference Specifications: Armstrong products are manufactured to meet or exceed specification requirements.
- All products meet the following Fire Test Data:
 - ASTM E 648 Flooring Radiant Panel Critical Radiant Flux – 0.45 watts/cm² or more, Class I
 - ASTM E 662 Smoke Chamber Specific Optical Smoke Density – 450 or less. Numerical flammability ratings alone may not define product performance under actual fire conditions. These ratings are provided only for use in the selection of products to meet specified limits.

- Feature Tile & Strips are recommended only for decorative borders and accents.

Adhesives

Product	Subfloor					Comments
	Wood	Concrete	Ceramic, Terrazzo, Marble	Metal	Existing Resilient Floor	
ARTEFFECTS Standard EXCELON® EXCELON	S-515, S-700 or S-750	S-89, S-515, S-700 or S-750	S-89, S-515, S-700 or S-750	S-89 or S-700	S-515 or S-750 Tile-on System	Stonetex – lay arrows in same direction

*For Metal, S-89 may only be used over steel, stainless steel, aluminum and lead.

Maintenance*

Product	Cleaners, Polishes, Strippers	Polish	Low-Maintenance Options	
			No Polish Spray Buff	No Polish Dry Buff
ARTEFFECTS Standard EXCELON EXCELON	S-401, S-402, S-403, S-480, S-485, S-490 and S-495	✓	Not recommended	Not recommended

*See Armstrong publication F-8663 for further information.

Scratch Whitening

Darker-colored patterns may be susceptible to scratch whitening. These colors may require more frequent maintenance if used in field areas.

Product	Pattern Numbers
ARTEFFECTS	57207, 57211, 57213
Standard EXCELON MultiColor	52517, 52518, 52522
Standard EXCELON Imperial Texture / Rave	51813, 51814, 51816, 51818, 51820, 51821, 51824, 51868, 51869, 51874, 51879, 51880, 51882, 51884, 51910, 51942, 51943, 51944, 51946, 51947, 51948, 57500, 57503, 57504, 57505, 57506, 57507, 57511, 57512, 57513, 57514, 57515, 57517
EXCELON Companion Square	51970
EXCELON Stonetex	52144, 52147, 52148, 52149, 52152, 52154, 52157, 52161, 52164, 52167, 52169, 52176, 52179, 52183, 52186, 52189, 52912, 52194, 52196, 52197, 52199, 52200, 52203
EXCELON Feature Tile & Strips	Solid colored floors tend to show scratching and soiling more readily than patterned floors. We recommend not installing Feature Tile as full field installations or in high traffic areas.

Light Reflectivity Values in Percent

0-9	10-14	15-19	20-24	25-29	30-34	35-39	40-44	45-49	50-54	55-59	60-64	65-69	70-74
51814	51818	51813	51802	51804	51866	51801	51803	51873	51809	51800	51839	51899	51933
51816	51821	51869	51872	51874	51867	51805	51905	51876	51810	51811	51929	51983	52500
51820	51824	51882	51879	51881	51877	51807	51938	51878	51836	51812	51941	52140	52505
51910	51868	52147	51916	51927	51885	51830	52122	51908	51858	51911	51973	52506	52514
51944	51875	52149	51942	52125	51903	51883	52143	51928	51860	52520	51974	52513	57518
51946	51880	52169	52135	52166	51906	51901	52156	51972	51861	57509	51977		
51970	51884	52192	52160	52168	52141	51904	52165	51976	51980		52127		
52144	51915	52197	52162	52186	52155	51932	52171	52180	52128		52139		
52152	51934	52200	52178	52188	52170	52126	52172	52201	52181				
	51943	52518	52194	52191	52173	52177	52174	52516	52198				
	51947	52522	52196	52199	52175	52190	52182	52521	52523				
	51948	57211	57207	52203	52185	52202	52183	57202	57200				
	52148	57213	57214	57206	52195	52524	52184	57215					
	52154	57504	57503	57208	57201	52525	52187						
	52157	57507	57505	57209	57217	57203	52193						
	52161	57513	57506	57210	57502	57204	52515						
	52164	57514		57216		57205	57510						
	52167	57515		57218		57501							
	52176	57517		57508		57516							
	52179			57511									
	52189			57512									
	52517												
	57500												

Measured under incandescent illumination (ASTM 1347). Types and patterns tested here are those most suited to commercial interiors where reflectivity is a major factor. Ratings for other patterns available upon specific request.

National Average Installed Cost per Square Foot

Vinyl Composition Tile	US Dollars	Canadian Dollars
Imperial® Texture / Rave®	\$1.75 – \$2.25	C\$1.75 – C\$2.25
MultiColor™	\$1.75 – \$2.25	C\$1.75 – C\$2.25
Stonetex®	\$2.25 – \$2.75	C\$3.00 – C\$3.50
Companion Square®	\$2.25 – \$2.75	C\$3.00 – C\$3.50
ARTEFFECTS®	\$2.25 – \$2.75	C\$3.00 – C\$3.50
Feature™ Tile Black	\$2.50 – \$3.00	C\$3.25 – C\$3.75
Feature Tile Colors	\$3.00 – \$3.50	C\$3.50 – C\$4.00

Prices are approximations only. Actual prices will vary based on competitive bidding, local labor costs and job conditions. Estimated prices include material and labor figured on a 500-square-foot (46.45-square-meter) open-area installation without any special cuttings or special subfloor preparation.