

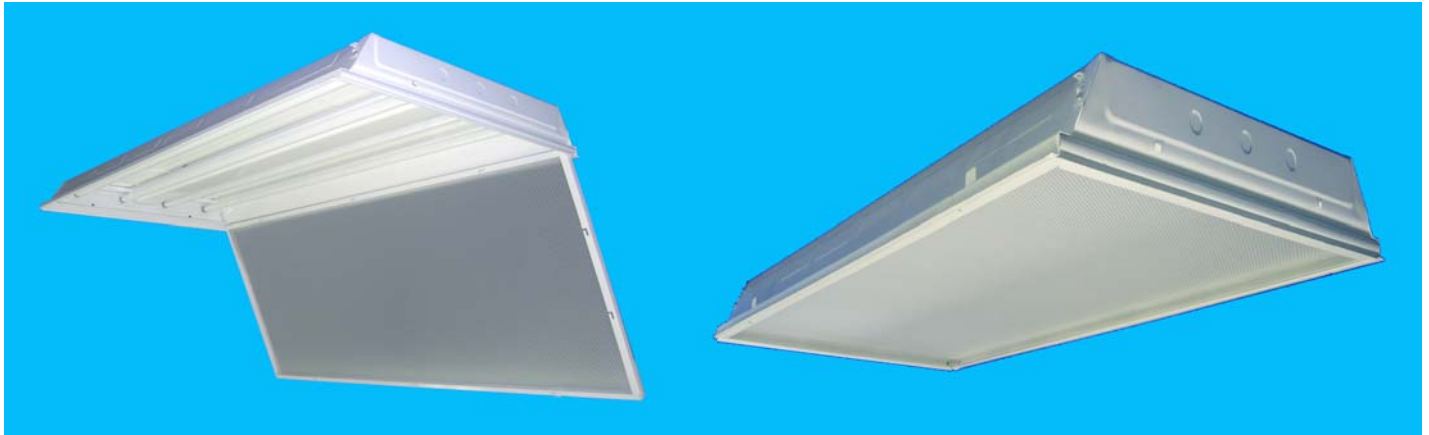


ILLUMINATION PRODUCTS, INC.

Manufacturers of Fluorescent Lighting Fixtures

LAY-IN TYPE RECESSED TROFFER

IPD-SERIES 2 FT. X 4 FT.



APPLICATION: The IPD series lay-in troffers are especially designed for maximum flexibility permitting quick and easy installation on all types of inverted “T” grid ceiling systems. Affords a comfortable environment for recessed general lighting applications such as offices, schools, hospitals, merchandising areas, etc.

CONSTRUCTION: Made from heavy-duty iron phosphate treated CRS (Cold Rolled Steel) and finished with a high-reflectivity electromagnetic-applied powder coat for a minimum reflectance of 90%, thereby, yielding high lumen efficiency. Die formed for extra strength and rigidity.

FEATURES: Maintenance and relamping are simple and easy while diffuser frame hangs from hinges or is completely removed. Top access plate and several knockouts make electrical wiring an easy task. Fixtures can be mounted in continuous rows. All units are U.L. approved.

ELECTRICAL WIRING: Supplied with a high frequency class “A” sound rating class “P” thermally protected, High Power Factor electronic ballast with total harmonic distortion of less than 10%. This multi-volt ballast will operate T8 lamps from 50/60 Hz input source of 120V through 277V. U.L. approved, CBM

certified, meets CSA Standards. Complies with U.S.A. National Energy efficiency standards. Optional: Dimming Ballast and Backup Power Pack available on special order.

SHIELDING: UV stabilized prismatic lens, 1/8" nom. thickness. Permits a high amount of light diffusion and has an attractive cosmetic appearance.

ORDERING INFORMATION:

<u>LAMPS</u>	<u>LAMP TYPE</u>	<u>PART NUMBER</u>
2 EA.	32W-T8	IPD-232/MV
3 EA.	32W-T8	IPD-332/MV
4 EA.	32W-T8	IPD-432/MV

OPTIONAL WITH ALUMINUM MIRROR FINISH REFLECTOR

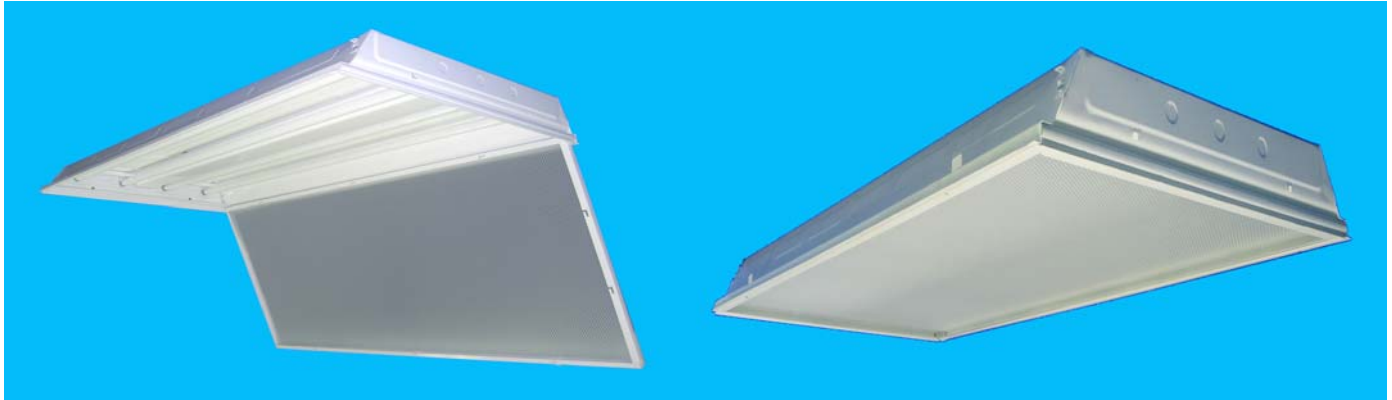
<u>LAMPS</u>	<u>LAMP TYPE</u>	<u>PART NUMBER</u>
2 EA.	32W-T8	IPD-232/MV-AMF
4 EA.	32W-T8	IPD-432/MV-AMF



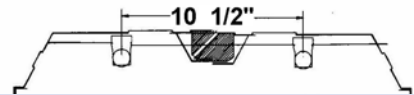
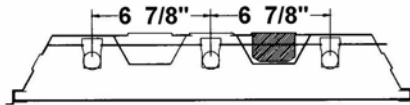
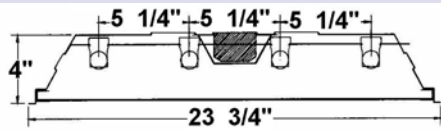
LAY-IN TYPE RECESSED TROFFER

IPD-SERIES

2 FT. X 4 FT.



CROSS-SECTION



BACKPLAN

