



## SINGLE LAMP STRIP

### IPS-SERIES



**APPLICATION:** This single lamp strip channel is an economical choice for general lighting needs where space and limited-mounting areas may be an issue. Strips may be used singularly or in continuous rows and can be surface-mounted or suspended by chains or rod hangers

**CONSTRUCTION:** Made from heavy-duty iron phosphate treated CRS (Cold Rolled Steel) and finished with a high-reflectivity electromagnetic-applied powder coat for a minimum reflectance of 90%, thereby, yielding high lumen efficiency. Die formed for extra strength and rigidity.

**ELECTRICAL WIRING:** Supplied with a high frequency class "A" sound rating class "P" thermally protected, High Power Factor electronic ballast with total harmonic distortion of less than 10%. Will operate T8 lamps from 50/60 Hz input source of 120V through 277V. U.L. approved,

CBM certified, meets CSA Standards. Complies with U.S.A. National Energy efficiency standards.

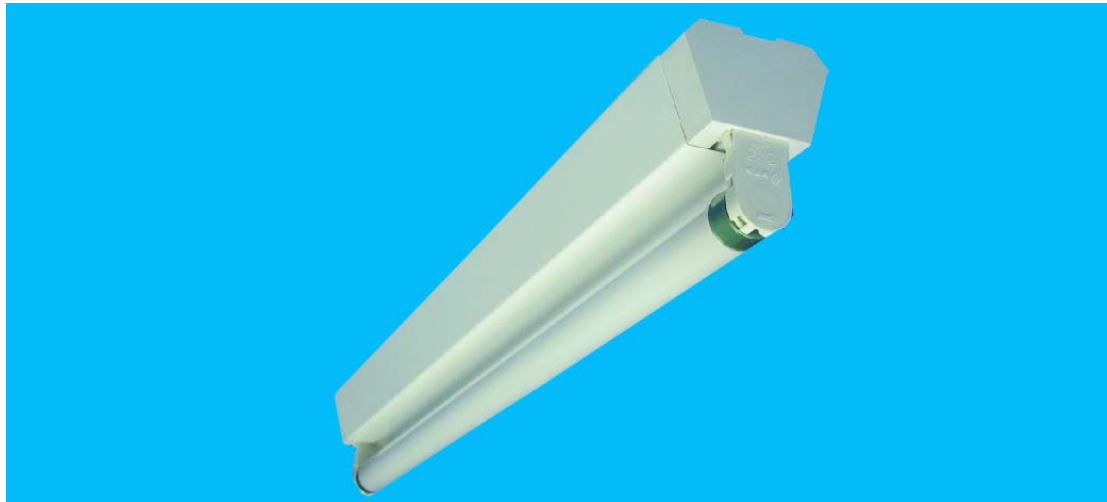
### **ORDERING INFORMATION:**

<b><u>LAMPS</u></b>	<b><u>LAMP TYPE</u></b>	<b><u>PART NUMBER</u></b>
1 EA.	17W-T8	IPS -117/MV
1 EA.	25W-T8	IPS-125/MV
1 EA.	32W-T8	IPS -132/MV

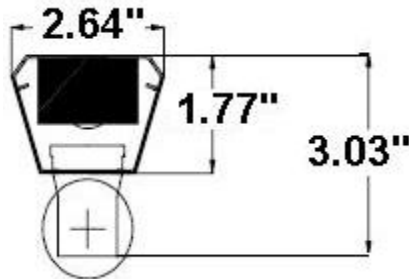


*Manufacturers of Fluorescent Lighting Fixtures*

## SINGLE LAMP STRIP IPS SERIES



### CROSS-SECTION



### BACKPLAN

