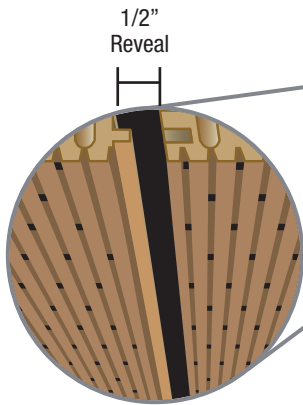


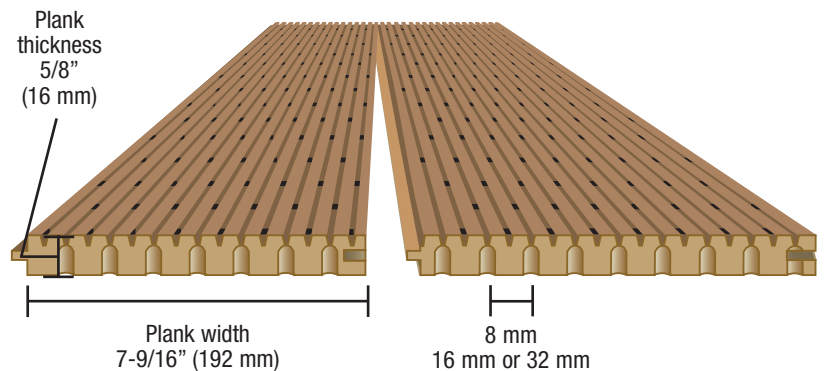
# Madero



Solo is an acoustical wood plank consisting of a medium density fibreboard (MDF) finished in a natural wood veneer. The face is grooved, the plank is perforated from behind and the back is laminated with an acoustically transparent black mat. This prevents insulation color from reading through. The plank is cut to fit on site and is typically installed on wood or steel furring with insulation placed behind the wood planks. The plank width measures 7-9/16" (192 mm) wide x 120" (3050 mm) long and has tongue and groove edges which is mounted to wood or to steel furring channels.

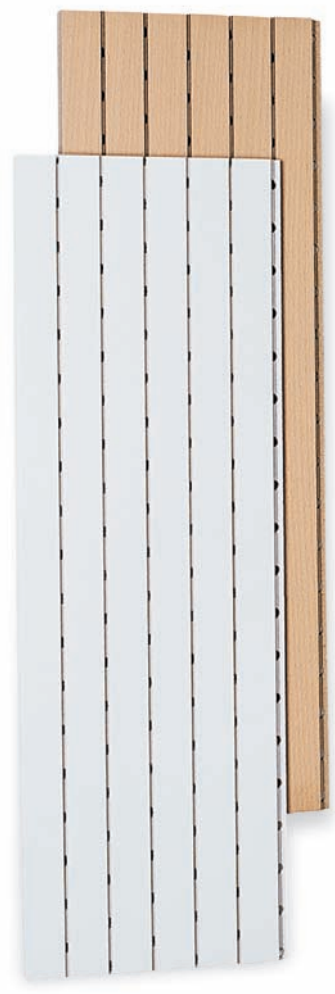
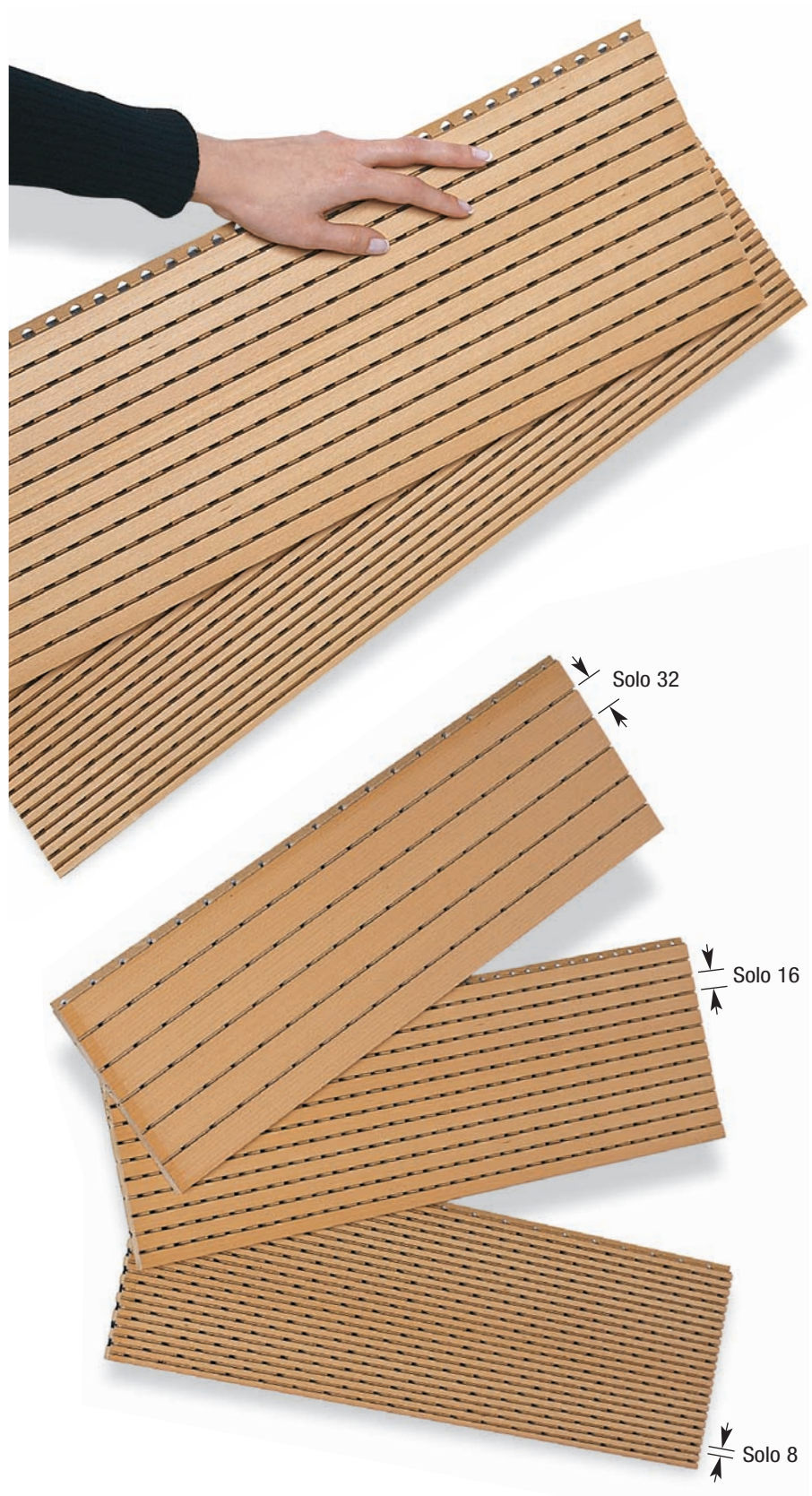


Standard Solo 8 planks in maple veneer with aligned 1/2" reveal create a panelized appearance.



# Solo

Solo is factory stocked in beech, cherry, and maple veneers quarter cut and pre-finished. Custom paint finishes are available. Solo is also available raw or pre-finished with a clear or custom toned lacquer.



- Solo 8 - 5/16" (8mm)
- Solo 16 - 5/8" (16mm)
- Solo 32 - 1 1/4" (32mm)





Solo with cherry veneer shown in a random matched aligned joint layout. The tongue and groove planks cannot be curved, however the plank can be indexed or stepped around a gentle radius to simulate the appearance of a curve. Narrower plank widths are available to provide a smaller radius. Since the veneer for Solo is randomly laid up, variations in veneer color and grain should be expected with Solo planks.



Solo-8 beech veneer quarter cut, slip matched with random match staggered joints. The overall appearance resembles tongue and groove flooring.

## Quality Standards & Specifications

Solo is made of medium-density fibreboard (MDF). Solo is finished using a two-step lacquer process that involves a “fill” first coat which is sanded and then top coated. The sheen value is high, consistently at a 30, and can be customized to any level. The lacquer and toning are brought into the grooves so the surface color is the same as the substrate.

## Climate Conditions

Solo planks must be stored, installed and maintained only in a secure ambient environment (humidity min. 35% - max. 55%, temperature not to exceed 27°C/80°F). Solo planks must be allowed to acclimatize on site for 72 hours prior to installation.

## Specifications - Walls

When Solo planks and Solo-M panels are located in conjunction with millwork and non acoustic wall panels, it is highly recommended that it be specified in the millwork section-Division 6. This will enable better design and installation control where veneer sourcing and finishing can be better co-coordinated.

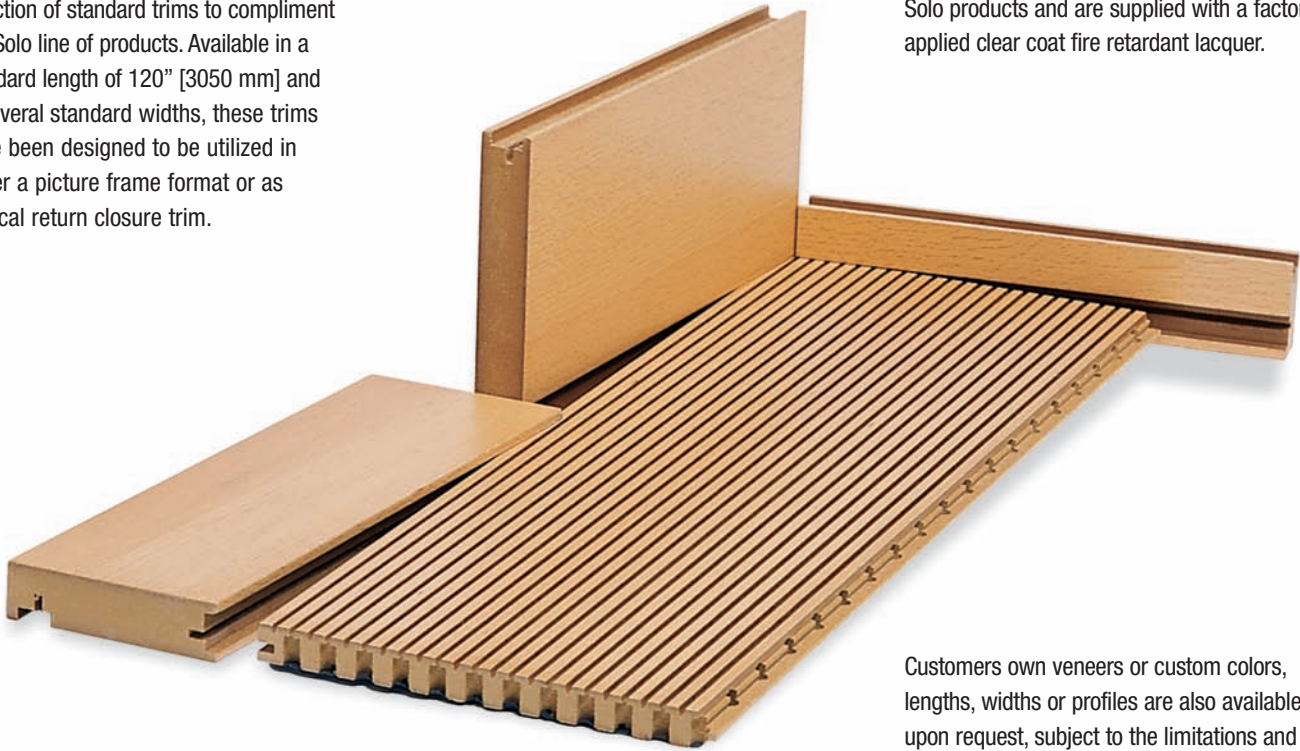
## Specifications - Ceilings

When Solo planks and Solo-M panels are used for a ceiling application it is recommended to be specified in the specialty acoustics ceiling section-Division 9. This will allow an experienced ceiling contractor to install the wood ceiling products direct to substrate or with one of many different Decoustics engineered systems. To compliment standard Solo product, Decoustics has made available various pre-engineered accessories to enable ceiling contractors to complete unique wood ceiling concepts.

# Solo Trim Accessories

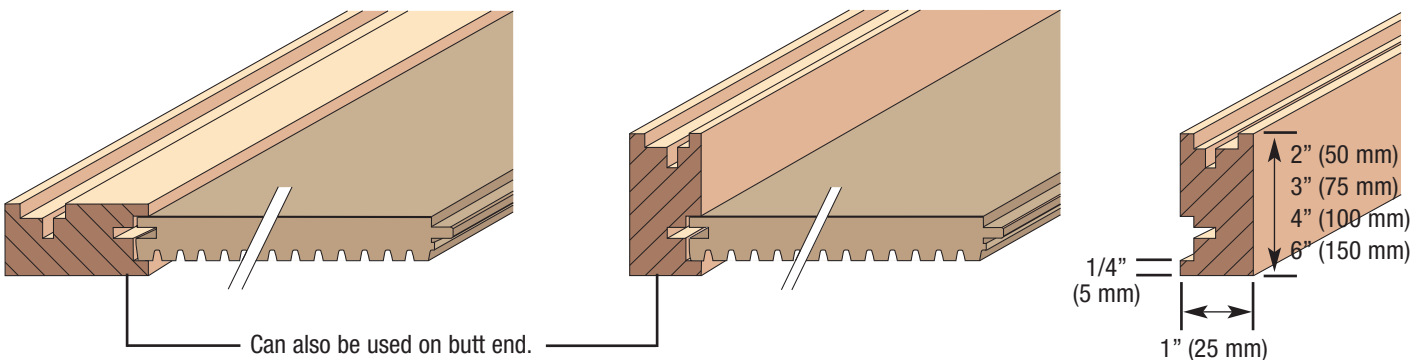
In order to provide the finishing touches to your Decoustics Solo wall or ceiling installation, Decoustics also offers a selection of standard trims to compliment our Solo line of products. Available in a standard length of 120" [3050 mm] and in several standard widths, these trims have been designed to be utilized in either a picture frame format or as vertical return closure trim.

Available in real wood veneers or custom painted to match plank. All trims are composed of the same Class A fire rated MDF cores as our Solo products and are supplied with a factory applied clear coat fire retardant lacquer.



Customers own veneers or custom colors, lengths, widths or profiles are also available upon request, subject to the limitations and availability of the raw materials.

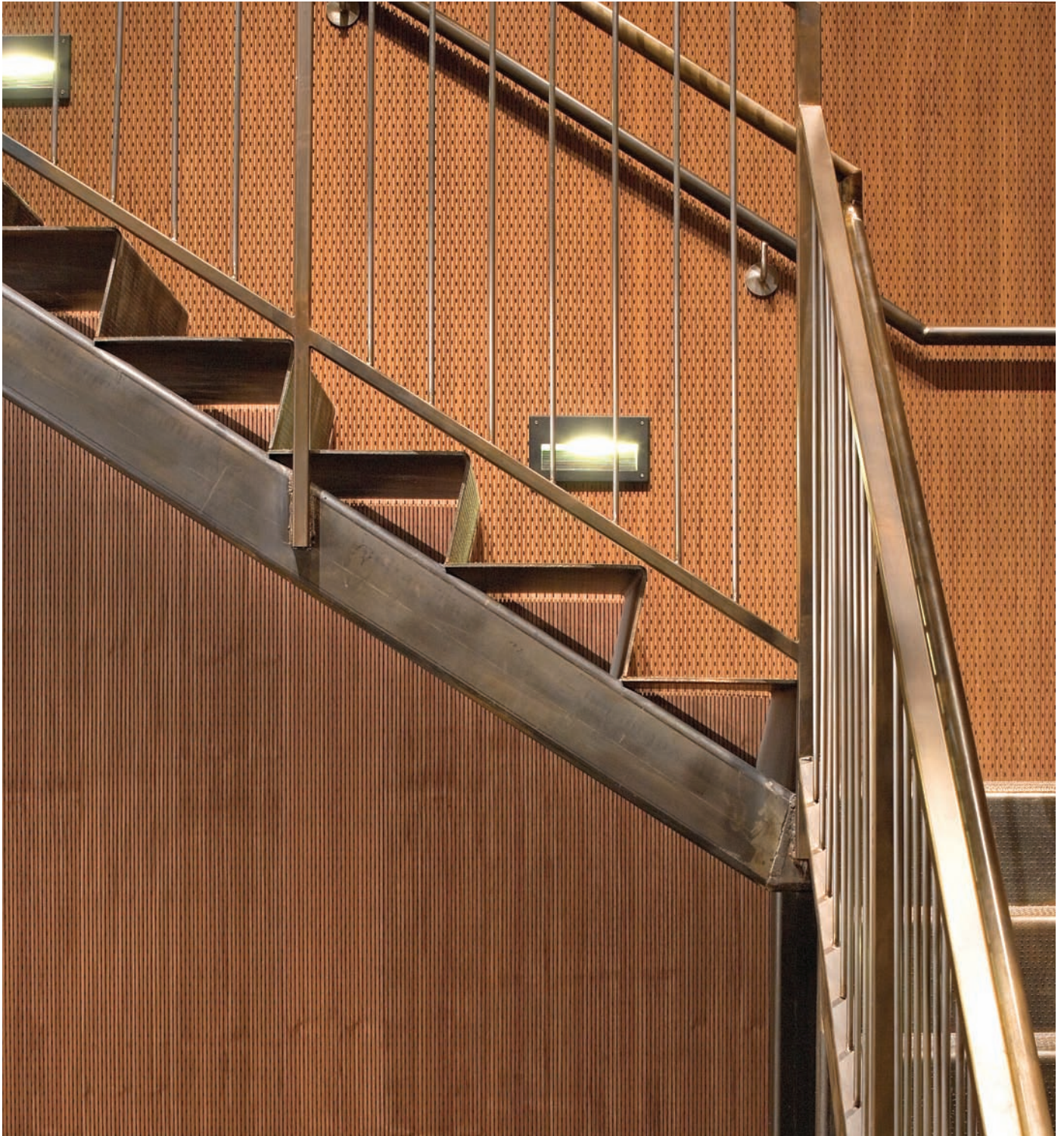
Please consult with your Decoustics rep or our factory for further information and to ensure correct specification criteria.



*Note:* Inside and outside corner trims are also available. Consult factory for other custom accessories.



# Madero

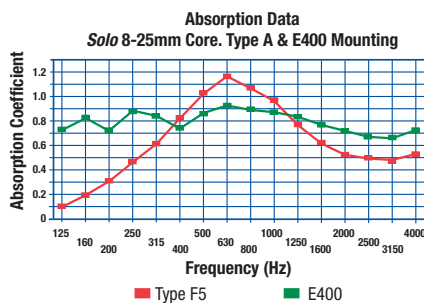


This upscale wall feature looks custom but was achieved with standard, field cut Solo planks in walnut veneer.





Custom reveals with coordinated trim, transform a standard Solo plank ceiling application into a custom design for this high-end retail space.



Type F5 -  
represents a typical wall installation

Type E400 -  
represents a typical ceiling installation

### Weight:

**Solo 8:** 2.0 lbs./ft<sup>2</sup> - 9.75 kg/m<sup>2</sup>

### Solo M and Solo

Fire Treated: The plank core is Class A. The veneer thickness is less than 1/28<sup>th</sup>.

The lacquer finish applied is fire retardant.

*Note:* In the Fire Treated format, the Solo plank is "Class A".

FINISH	ACOUSTICAL INFILL	FREQUENCY (Hz)						NRC	SAA
		125	250	500	1000	2000	4000		
<b>Type F5 Mounting</b>									
Solo 8	1" (25 mm)	0.10	0.45	1.03	0.96	0.51	0.51	0.75	0.73
Solo 8	2" (50 mm)	0.36	0.97	1.15	0.92	0.71	0.69	0.95	0.95
<b>Type E400 Mounting</b>									
Solo 8	1" (25 mm)	0.71	0.88	0.86	0.89	0.70	0.71	0.85	0.81
Solo 8	2" (50 mm)	0.79	0.97	1.12	1.01	0.77	0.68	0.95	0.94

Additional test results available.



# Madero



Highly custom Quadrillo ceiling with solid millwork features.



For custom applications, Decoustics will provide matching millwork edge and perimeter details along with solid non acoustical panels.



Custom Quadrillo ceiling with framed panels and a unique detail at light fixture suspension.

# Customized Applications



Quadrillo reception design.



Custom Quadrillo pedestal.

## Doors and Cabinets

The Quadrillo door is a sandwich panel construction composed of the Quadrillo finish laminated to both face and back of a perimeter frame filled with a high performance acoustical core.



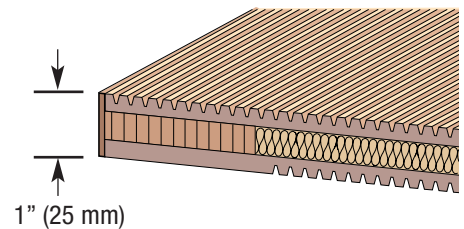
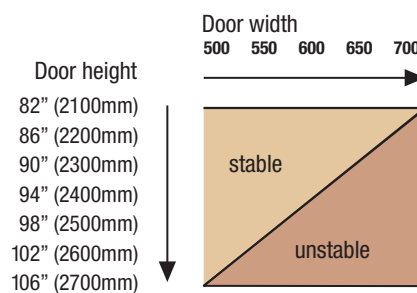
Custom Quadrillo cabinet doors.



Painted Quadrillo cabinet doors with integral offsets for latch and locks.



### Door Sizing





For over 30 years, Decoustics has been the international leader in design, engineering and the manufacture of custom acoustical ceiling and wall products. This leadership in the use of interior acoustic products is based on reliability, innovation, service and quality.

### Services

Decoustics assists in design, budgeting, CAD drawings, acoustical and fire testing, and with our qualified sales representation.

### Warranty

For warranty information please refer to our website.

### Environmental Commitment

We are constantly seeking ways to contribute to a better environment. Decoustics is a member of the U.S. Green Building Council and AWI. LEED, BREEAM and environmental information on our products can be found on our website.



Quadrillo, custom toned ash panels in a direct suspended absorptive/reflective application met the stringent acoustical requirements of this auditorium.

### Decoustics Limited

65 Disco Road  
Toronto, Ontario  
Canada, M9W 1M2  
Tel. (416) 675-3983

P.O. Box 615  
Getzville, NY  
14068-0615  
USA

1-800-387-3809  
Fax. (416) 675-5546

e-mail: [sales@decoustics.com](mailto:sales@decoustics.com)

### Decoustics Limited

Compass House, Vision Park  
Chivers Way  
Histon, Cambridge  
United Kingdom CB4 9AD  
Tel: 0044-1223-257-701  
Fax: 0044-1223-257-834

[www.decoustics.com](http://www.decoustics.com)

This brochure was printed on FSC certified paper.

Visit our website to locate your  
Decoustics Representative.

**CertainTeed**  
*Quality made certain. Satisfaction guaranteed.™*

Claro, Ceilencio, Designed Returns, Metallo, Quadrillo, Solo, Madero and Trelisio are trade marks of Decoustics. The information provided in this brochure is accurate to the best of our knowledge at the time of printing. However, we reserve the right to make changes when necessary without further notification. Suggested applications may need to be modified to conform with local building codes and conditions. We cannot accept responsibility for products that are not used or installed to our specifications.