



Committed to Sustainable Development

Gerflor recognizes the importance of being proactive and creating new ways to achieve sustainable development. This is why Gerflor is devoting substantial investment to the environment field.

- ▶ Investing in new raw materials and production processes, building a sustainable future
- ▶ Innovative floors with proven technical performance - conserving precious resources for a sustainable future
- ▶ Pioneering solutions in recycling 100% recyclable floor coverings



AgPR

ASIA: Gerflor Asia - tel. +852 2142 3728 - fax +852 2834 4795 - gerflorasiam@gerflor.com - AUSTRALIA/NEW ZEALAND: Gerflor Australasia Pty. Ltd - Australia: 1 800 060 785 - New Zealand: 0 800 630 119 - gerflor@gerflor.com.au - AUSTRIA/SWITZERLAND: Gerflor GmbH - tel. +43 (0)72 29/70 800-0 - fax +43 (0)72 29/70 800-218 - austria@gerflor.com - switzerland@gerflor.com - BELGIUM/LUXEMBURG: Gerflor Benelux - tel. +32 (0)3 766 42 82 - fax +32 (0)3 766 29 14 - gerflorbelgium@gerflor.com - CANADA: Gerflor International - tel. +1 450 538 9828 - fax +1 450 538 9827 - gerflorcanada@gerflor.com - CHINA: Gerflor China - tel. +86 (512) 525 28 766 - fax +86 (512) 525 28 376 - gerflorchina@gerflor.com - GERMANY: Gerflor Mipolam GmbH - Kunden-Service tel. +49 (0)22 41-25 30 131 - fax +49 (0)22 41-25 30 100 - kundenservice@gerflor.com - IRELAND: Gerflor Ltd - tel. +353 (0) 42 966 1431 - fax +353 (0) 42 966 1759 - gerflorir@gerflor.com - ITALY: Gerflor S.p.A. - tel. +39 02 90 78 60 12 ca. - fax +39 02 90 42 74 84 - gerflorit@gerflor.com - LATIN AMERICA (Brazil): Gerflor América Latina - tel. +55 11 38 48 2020 - fax +55 11 38 48 2023 - gerflor@gerflor.com.br - MIDDLE EAST: Gerflor Middle East - tel. +966 3 847 1779 - fax +966 3 847 1781 - gerflorME@gerflor.com - NETHERLANDS: Gerflor BV - tel. +31 (0)40 266 17 00 - fax +31 (0)40 266 17 00 - gerflorNL@gerflor.com - OTHER COUNTRIES: Gerflor International - tel. +33 (0)4 74 05 40 00 - fax +33 (0)4 74 05 03 13 - gerflorcontract@gerflor.com - POLAND: Gerflor Polska Sp z o.o - tel. +48 61 823 34 01 - fax +48 61 823 34 33 - info@gerflor.pl - PORTUGAL: Gerflor Iberia, SA - tel. +351 21 843 95 49 - fax +351 21 846 55 44 - gerflorportugal@gerflor.com - RUSSIA: Gerflor Moscow Office - tel. +7 495 430-86-54 / 65 - fax +7 495 430-85-46 - gerflorus@mspk.east.ru - SCANDINAVIA: Boide Gerflor Scandinavia a.s. - tel. +47 64 95 60 70 - +47 64 95 60 80 - gerflorscand@gerflor.no - SPAIN: Gerflor Iberia, SA - tel. +34 91 653 5011 - fax +34 91 653 2585 - gerfloriberia@gerflor.com - UNITED KINGDOM: Gerflor Ltd - Sample service: +44 (0) 870 264 7581 - Office Tel: +44 (0) 1926 401 500 - fax +44 (0) 1926 401 647 - Contractuk@gerflor.com - USA: Gerflor USA - tel. 877 GERFLOR (437 3567) - fax 847 394 3753 - info@gerflorusa.com

www.gerflor.com

Gerflor
Floors to match your imagination

Jpe - Photos : Iconos - 03/2009



Committed to access for all



Gerflor

Floors to match your imagination

Gerflor solutions

Access for all is a critical issue for designers of all public spaces and to assist specifiers, GERFLOR has developed a complete offer to meet the needs of all users including those with mobility issues and visual impairments.

Flooring

- Due to their smooth and compact construction, the **GERFLOR** floorings are ideally suited to wheelchair use.



- For users with walking difficulties and for those needing a sure foothold the **TARASAFE** range provides the assurance of fully HSE compliant slip resistance.



- The wide range of colours and designs allows for clear navigation and colour differentiation to highlight walkways, doors, stairways and other obstructions.

Signage

- Logos and signs can be embedded into the flooring to accentuate the important elements of the building (reception, lift, stairs...).



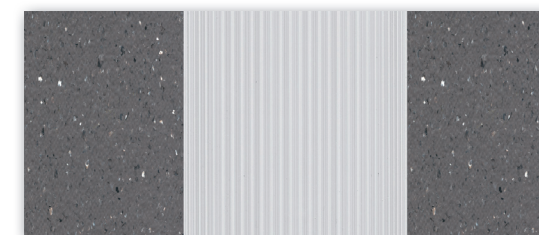
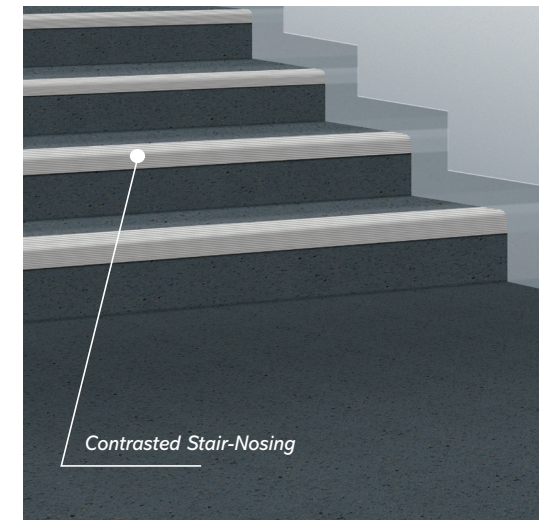
Shower System

The **TARADOUCHE SHOWER SYSTEM** is a complete offer for shower room. The installation comes with an integral drainage system to allow the shower to be without a shower tray - ideal for wheel chair use.

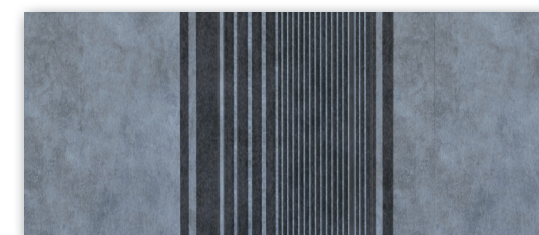


Stairs

The **TARASTEP** range will assist visually impaired people as well as all other users differentiate between the stair riser and step due to the integral colour **contrasted stair-nosing**.



Costa Rica 4746 Jaguar



Strada 0465 Ciment

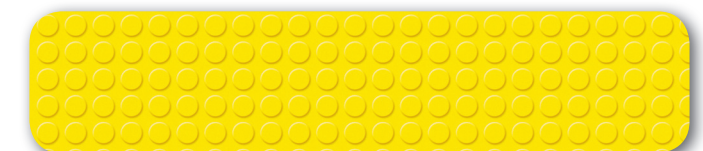
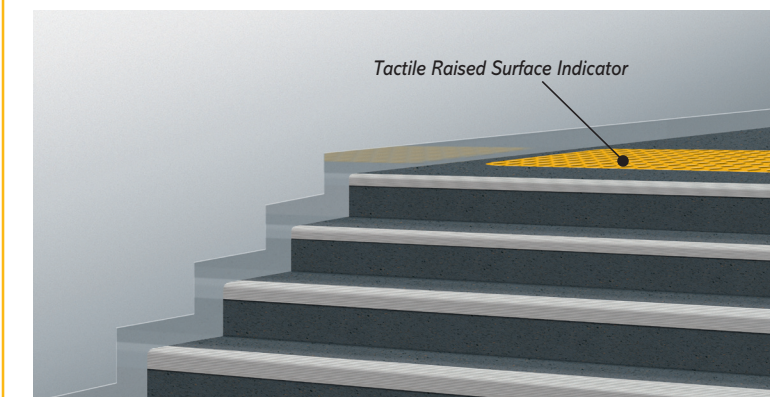
TECHNICAL DATA		Tarastep / Tarastep Premium	
Total thickness	EN 428	mm	3.85/3.30
Length/ Width of sheet	EN 426	cm	100/22
European classification	EN 685	class	34-42
Impact sound insulation	EN ISO 717-2	dB	18/17
Walking resonance	NFS 31 074	class	A
Fire rating	EN 13501-1	class	C _f -s1
Slide resistance	EN 13893	class	DS
Wear resistance	EN 660.1	mm	≤ 0.08
Wear group	EN 651	group	T
Anti-Bacterial and fungicidal treatment	-	-	Sanosol®

NB: Tarastep can only be used with bull nosed stairs.

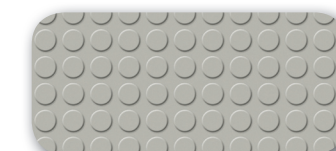


Tactile Raised Surface Indicator

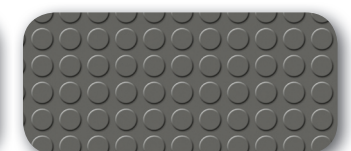
- The **GERFLOR TACTILE STRIPS** are a recognised solution for visually impaired individuals to help alert them to the proximity of a stairway. The solution provides textured alert which the person can feel through their feet or via a white stick.
- The **GERFLOR TACTILE STRIPS** should be located at the approach to an internal stair to alert that there is to be an imminent change to the floor level.
- The **GERFLOR TACTILE STRIPS** are manufactured in 3 colours to provide the necessary visual contrast with the surrounding floor.



0005 Yellow



0007 Light Grey



0009 Dark Grey

TECHNICAL DATA		Tactile Raised Surface Indicator	
Total thickness	EN 428	mm	3.30 (on grain side)
Wear layer thickness	EN 429	mm	0.65
Size	EN 426	cm	40 x 135 / 40 x 200
Fire Rating	EN 13501-1	class	B _{f1} -s1