

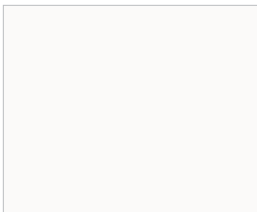
Country Woods® 1" Wood Blinds



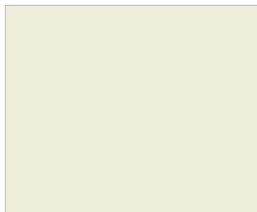
Country Woods® Wood Blinds from Hunter Douglas are the finest wood blinds in the industry. Made from 100% hardwood, Country Woods® are available in a wide range of paints and stains.

KEY FEATURES

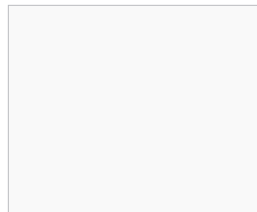
- GREENGUARD Indoor Air Quality Certified® and GREENGUARD Children and SchoolsSM certified for low-emitting products
- Topshield™ II finishing process adds fade, moisture, scratch and chemical resistance to slats
- Selection of custom valances and decorative keystones
- Lifetime Guarantee



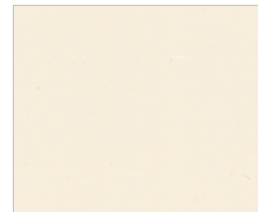
801 Bright White



808 Eggshell



867 Vivid White



809 Linen



869 Cottage Pine



870 Warm Cherry



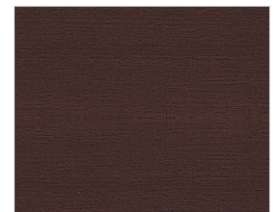
616 Harvest



617 Sienna



618 Tuscany



620 Shiraz



C O N S S 0 9 C W 1

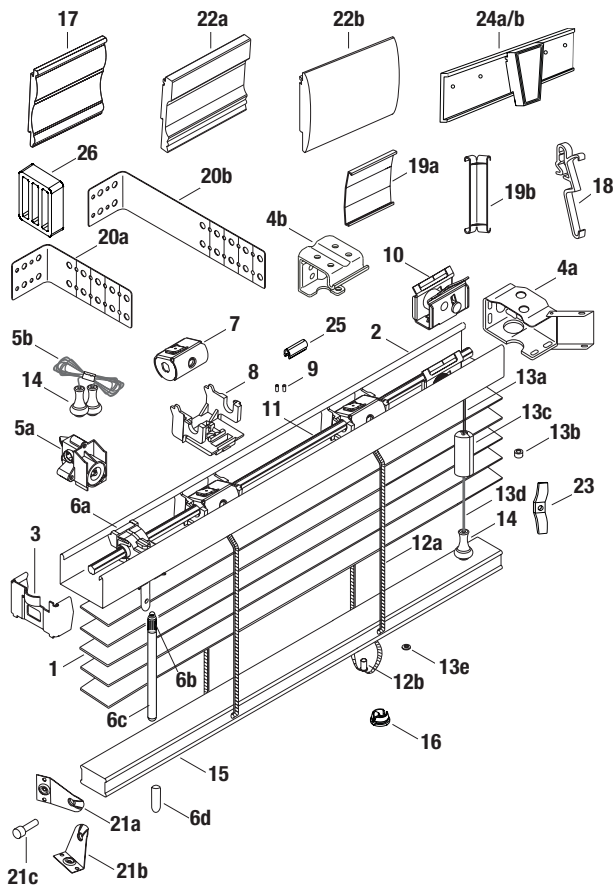
HunterDouglasContract

WINDOW COVERINGS

© Copyright Hunter Douglas Contract 2009

® Hunter Douglas and its product names are registered trademarks

® The GREENGUARD INDOOR AIR QUALITY CERTIFIED mark is a registered certification mark used under license through the GREENGUARD Environmental Institute.



STANDARD COMPONENTS:

- 1. Slat
- 2. Headrail
- 3. Headrail End Lock
- 4a. Installation Bracket
- 4b. Intermediate Support Bracket
- 5a. Cord Tilter
- 5b. Tilt Cord 1.2 mm
- 6a. Wand Tilter
- 6b. Wand Connector Kit
- 6c. Wand
- 6d. Wand Stem Protector
- 7. Tape Roll
- 8. Tape Roll Support
- 9. "X" Tape Locator
- 10. Cordlock
- 11. Tiltrod
- 12a. Cable Tape
- 12b. 2" Cable Tape Grommet
- 13a. Lift Cord 1.4 mm
- 13b. Cord Stop Washer
- 13c. Cord Stop
- 13d. Tassel Cord 2.2 mm
- 13e. Lift Cord Grommet

- 14. Wood Tassel
- 15. Bottom Rail
- 16. Tape Button
- 17. Grandover™ Valance
- 18. Universal Valance Clip
- 19a. Valance Splice
- 19b. Universal Valance Corner Key

OPTIONAL COMPONENTS:

- 20a. Short Extension Bracket
- 20b. Long Extension Bracket
- 21a. Hold-Down Bracket (Jamb)
- 21b. Hold-Down Bracket (Sill)
- 21c. Hold-Down Pin
- 22a. Havencrest™ Valance
- 22b. Artemis™ Valance
- 23. Child Safety Kit (Cord Cleat)
- 24a. Decorative Keystone 3 3/4"
- 24b. Decorative Keystone 5"
- 25. Clip
- 26. Spacer Block

PRODUCT SPECIFICATIONS

PART 2 – PRODUCTS

2.01 ACCEPTABLE MANUFACTURER

- A. Hunter Douglas Contract/ 12250 Parkway Centre Dr. / Poway, CA 92064/
Phone: 800-727-8953 Fax: 800-205-9819/ Website: www.hunterdouglascontract.com,
or architect approved equivalent. Contact the following for project assistance and
dealer referral @ 800-964-2580: (Mideast/Midwest) Keith Burgess ext. #827311,
(Southern/Central) Christopher Hagen ext. #827312, (Western/Mountain/Upper
Midwest) David Cover ext. #827313, (Northeast) Patrick LeClair ext. #827314.
- B. Product substitutions must be approved by architect minimum of 30 days prior to close of bid.

2.02 1" HORIZONTAL WOOD BLINDS

A. **PRODUCT:** Hunter Douglas "Country Woods® 1" Classics Horizontal Wood Blind"

B. MATERIALS:

- 1. **SLATS:** 1" wide x 1/8" thick cut from quality selected hardwood with slat ends stained or painted to match slat color. Furnish not less than nominal 13.9 slats per foot to ensure tight closure and light control. Finish with manufacturer's standard stained and lacquered or painted finish in colors selected by architect from manufacturer's available contract colors.
- 2. **SLAT SUPPORT:** Braided ladders of 100% polyester yarn color compatible with slats and spacing of ladder no more than 21.5mm.
- 3. **HEADRAIL:** U-shaped profile with rolled edges, measuring 1" x 1 1/2" x .024" constructed of corrosion resistant steel. Internally fit with components required for specified performance and designed for smooth, quiet, trouble-free operation. Headrail finish to be standard baked-on polyester and to coordinate with slats. Ends fitted with zinc-coated steel end lock with adjustable tab for centering blinds.
- 4. **BOTTOM RAIL:** 1" wide x 5/8" thick rectangular shape quality selected hardwood with ends stained or painted to match slats. Color-coordinated engineered polymer tape buttons secure the ladder and cord. Finish to be manufacturer's standard stained and lacquered or painted finish to match slats.

- 5. **LIFTING MECHANISM:** Engineering polymer and galvanized steel housing cordlocks with polymer roller bearing and steel locking dogs, two-ply polyester cord filler in braided polyester jacket lift cords meet or exceed commercial specification 1029.86, and cord stop / tassel. Located on either side of individual blind unit as per architect's request.
- 6. **TILTING MECHANISM:** Standard wand tilt of worm and gear construction with slip clutch incorporated into tilter mechanism holds and tilts slats at any angle. Solid steel, corrosion resistant tilt rod.
- 7. **TILT CONTROL WAND:** Rounded 3/8" diameter constructed of quality selected hardwood stained and lacquered or painted to match slats and detachable without tools. Located on either side of individual blind unit as per architect's request.
- 8. **MOUNTING HARDWARE:** Manufacturer's standard .030" steel box brackets with baked-on polyester finish to match headrail with additional support brackets for blinds over 48" wide.
- 9. **VALANCE:** Crafted of selected hardwoods, stained and lacquered or painted to match slats.
- 10. **ADDITIONAL AVAILABLE OPTIONS:** Wand Tilt, 2 or 3 Blinds on 1 Headrail, Hold Down Brackets, Extension Brackets, Cutouts.

2.03 FABRICATION

- A. Blind measurements shall be accurate to within + 1/8" or as recommended in writing by manufacturer.

2.04 FINISHES

- A. **SLAT** finish selection from the following: 801 Bright White, 808 Eggshell, 867 Vivid White, 809 Linen, 869 Cottage Pine, 870 Warm Cherry, 616 Harvest, 617 Sienna, 618 Tuscany, 620 Shiraz.
- B. **SLAT SUPPORT** braided ladders shall be color coordinated with slat.