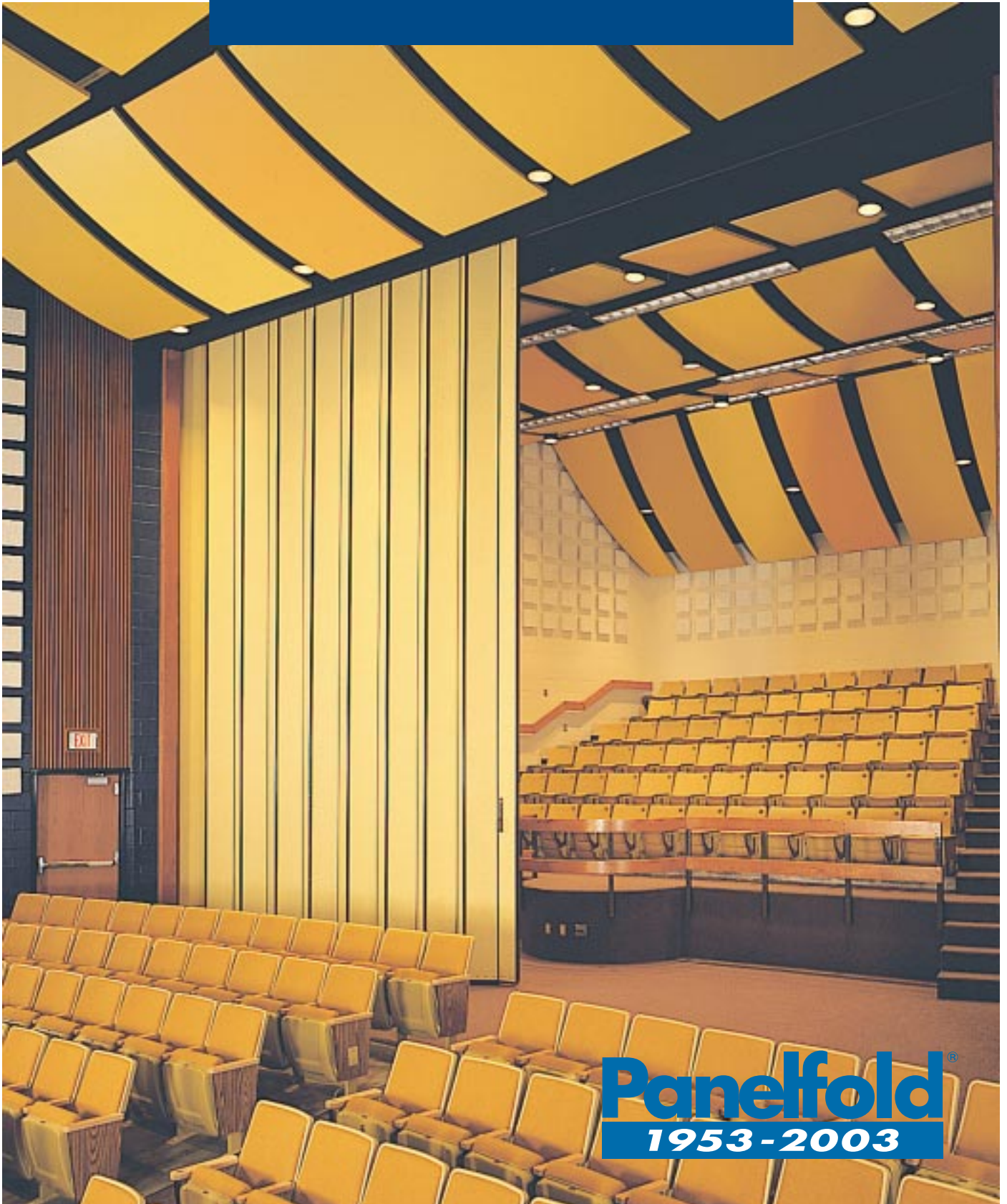


Sonicwal®

10650/PAN
BuyLine 7239



Panelfold®
1953-2003

Laminated Panel Accordion Partitions

Sonicwal[®] Laminated Panel Accordion Partitions

Design integrity and understanding of functional space has made Panelfold the first preference of the discriminating designer for over four decades. **Sonicwal** is the acoustical folding partition that has evolved through Panelfold's commitment to excellence and understanding of multiple use areas. **Sonicwal's** functional aesthetics and visual harmony offer solutions for hospitality, corporate, civic, medical, religious, and educational facilities.

- Sound ratings from STC 42 to STC 50
- Twelve, eight, and six inch wide panels
- Sound absorption ratings to NRC .70
- Machine laminated panel surfaces
- Manual or electrical operation
- Available to eighteen feet high

SUPERIOR DESIGN AT A COMPETITIVE PRICE

Sonicwal Rigid Panel Acoustical Folding Partitions feature strong, durable, laminated panels and a fabulous collection of affordable surface options including wood veneers, high pressure laminates, wood grain vinyls, textured vinyls, luxurious wall carpeting, and panel fabrics... and the highest acoustical ratings of any accordion partition made.

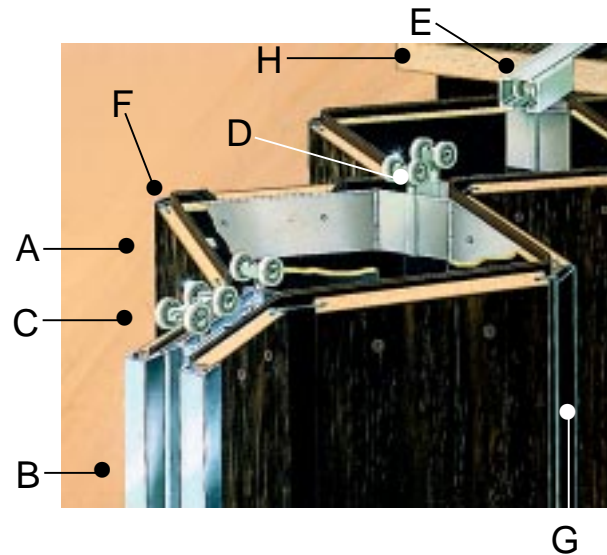
ACOUSTICAL PERFORMANCE

Sonicwal Accordion Partitions are offered with five laboratory certified sound transmission class ratings from STC 42 to STC 50. And an optional noise reduction coefficient of NRC .70 is available on one or both sides of STC 42 rated models. To create quiet spaces,



Sonicwal partitions employ exclusive hinging systems that acoustically de-couple the panels on one face of the partition from those on the other face. This makes possible the structural, durability and appearance advantages of rigid laminated panels while achieving high sound isolation.

SONICWAL CONSTRUCTION FEATURES



A. Decorative surfaces machine laminated to twin walls of strong, stable high density particleboard panels are more resistant to wear and tear than the covers on ordinary partitions.

B. Double-walled two inch thick, deep-nesting end post has dual vertical sound seals, Gripull handles and a positive latch for sound control, plus air release vents which make opening and closing accordion partitions easier.

C. Six large ball-bearing wheels on each end post support and guide the operation of these models smoothly.

D. Four large ball-bearing wheels are installed on each 16 gauge steel support bracket assembly at each volute. There are no unsupported volutes.

E. Low profile extruded aluminum track top supports the partition and provides quiet, efficient operation.

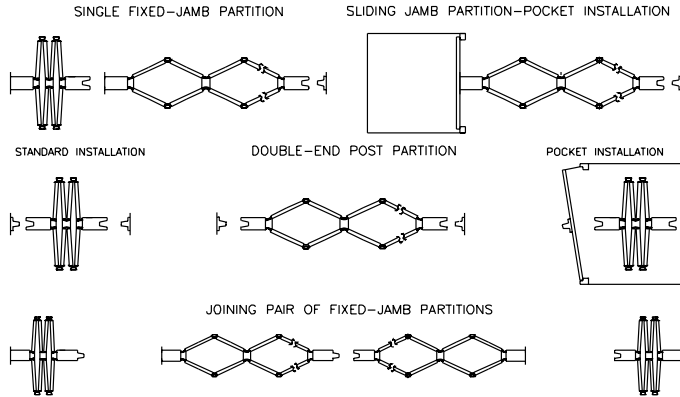
F. Three-fingered Sonicsweep™ seals are field adjustable during installation for an effective seal at top and bottom of the partition. Perfect for irregular floors.

G. Dual-walled Memory-Action[®] Vinyl hinges join, seal and protect panel edges from marring scrapes and blows. Made of extruded vinyl, these hinges never wear out. They acoustically dampen panels and provide "Memory-Action" causing panels to extend and stack equally.

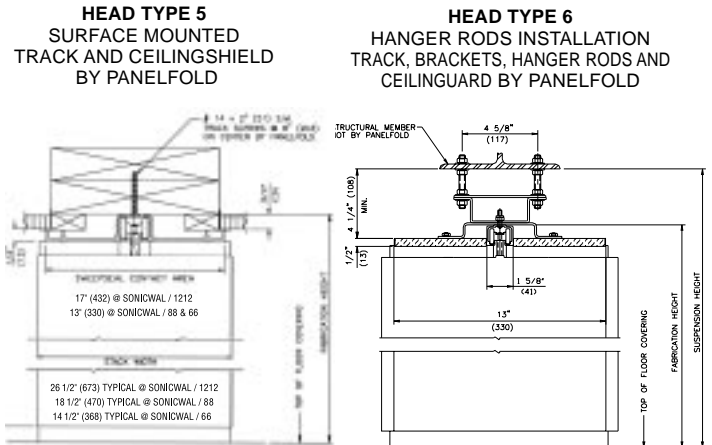
H. Ceilingshield™ sweep seal contact head trim is available from Panelfold in white to match typical ceilings.

DETAILS FOR SONICWAL - ACOUSTICAL ACCORDION PARTITIONS

TYPES OF APPLICATIONS

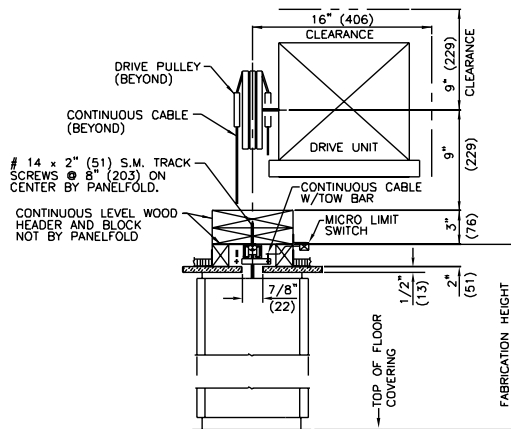


VERTICAL SECTION - HEAD DETAILS MANUAL OPERATION

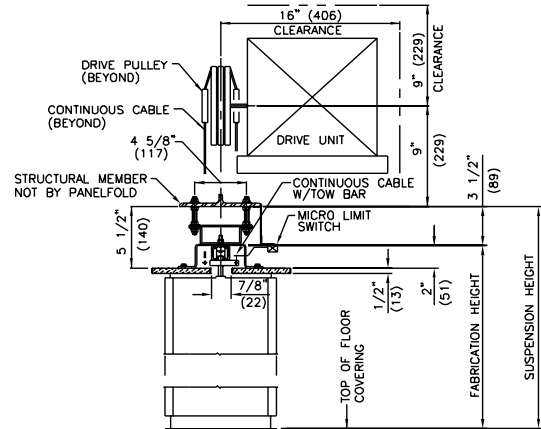


VERTICAL SECTION - HEAD DETAILS - ELECTRIC OPERATION

HEAD TYPE 7 (ELECTRIC)
DIRECT MOUNT INSTALLATION
TRACK, DRIVE UNIT AND CEILINGGUARD BY PANELFOLD



HEAD TYPE 8 (ELECTRIC)
HANGER RODS INSTALLATION
TRACK, BRACKETS/HANGER RODS, DRIVE UNIT
AND CEILINGGUARD BY PANELFOLD



All Dimensions Shown in Parentheses are Millimeters

SONICWAL PRODUCT SELECTION CHART

FEATURES	SONICWAL/1212		SONICWAL/88		SONICWAL/66	
	STC 50	STC 45	STC 44	STC 42	STC 44, STC 42	STC 44, STC 42
Modular Panel Width	12"		8"		6"	
Hanging Weight (lbs/ft ²)	7.3	6.7	7.3	6.7	7.3	6.7
Maximum Height	18'1"		18'1"		18'1"	
NRC .70	N/A		Optional @ STC 42		Optional @ STC 42	
Carved or Carpeted Panels	Optional		Optional		Optional	
Electrical Operation	Optional		Optional		Optional	
Interior Steel Hinge Support System	Standard		Standard		Standard	
Adjustable Sonicsweeps™	Standard		Standard		Standard	

See Page 10 for SONICWAL GUIDE SPECIFICATIONS

GUIDE SPECIFICATIONS FOR SONICWAL® ACOUSTICAL ACCORDION PARTITIONS

PART 2. PRODUCTS

2.1 ACOUSTICAL ACCORDION folding partitions shall be (specify: manually or electrically operated) Sonicwal (specify: 1212; 88; Or 66) (specify: STC 50; STC 45; STC 44; or STC 42) as manufactured by Panelfold, Inc., Miami, Florida USA and installed by an authorized representative in openings prepared by others to Sonicwal requirements.

2.2 TWIN WALL PARTITION PANELS shall be bolted to 16 gauge steel panel support brackets and suspended from the steel yoke hinged at the brackets. Multi-fingered extruded vinyl Sonicsweep seals shall be installed top and bottom both sides of the partition and shall be field adjustable.

2.3 END POSTS shall have deep nesting aluminum nose with dual vertical sound seals and shall be equipped with Gripulls, latches and aluminum jamb moulds (specify: bronze ESP; or natural anodized).

2.4 TRACK AND HANGERS: Track shall be extruded aluminum with integral aluminum Ceilingshield™ Sonicsweep contact guard. Four ball-bearing wheels shall be installed on each volute and a minimum of six shall be installed on each end post.

2.5 PANEL SURFACES: Panels shall be specially laminated engineered wood core, bonded with water-resistant, plastic glue and surfaced with (specify one: architectural wood veneer; wood grain vinyl; textured vinyl; high pressure decorative laminate; or customer's own material or, Ribtex wall carpet or Woventex or Maharam Tekwall 1000 (panel fabric.) Genuine woods, wood grains and colors from manufacturer's selectors. Optional carved design shall be provided (specify: one or both sides).

2.6 CONNECTOR HINGES: Panels shall be hinged and edge sealed to reduce sound, light and air transmission with heavy duty dual-wall, flame-resistant, extruded vinyl. Hinges shall be securely locked into and protect the panel edges. They shall provide "Memory-Action®" causing panels to extend and stack equally, smoothly and quietly. Colors from manufacturer's selector.

2.7 HARDWARE: Security units shall be as specified: Privacy lock one side only; cylinder lock one side only; Cylinder lock one side, privacy lock other; Cylinder lock two sides. Master-keyed cylinder lock by others shall be installed in lieu of regularly furnished cylinder.

2.8 FIRE RETARDANCY: Optional. Panels shall be made up of fire retardant cores (ASTM E84-70 laboratory tunnel tested with 20 flame spread, 15 fuel contributed, 15 smoked developed).

2.9 CURVED TRACK, SWITCHES AND MULTIPLE MEETING POSTS: Furnish to effect room division as detailed on the plans. Minimum radius 3'0" (914mm).

2.10 STACK FORMULA: (Approximately) Sonicwal/1212 1 1/8"/ft. (94mm/m); Sonicwal/88 1 5/8"/ft. (135mm/m); Sonicwal/66 2 1/4"/ft. (187mm/m); + 8 1/2" (216mm), manually operated; 12 1/2" (308mm) for electrical operation.

2.11 HANGING WEIGHT: (Approximately) STC 50 7.3 lbs/ft² (36kg/m²); STC 45 6.7 lbs/ft² (33kg/m²); STC 44 7.3 lbs/ft² (36kg/m²); STC 42 6.7 lbs/ft² (33kg/m²).

For complete 3-Part specifications, see Product Briefs, Interactive CD-ROM or Panelfold website at www.panelfold.com

Scale/12® • Scale/8® Laminated Single Panel Folding Partitions

Panelfold is recognized as the leading manufacturer of quality wood folding partitioning. Nothing exemplifies this reputation more than the materials and workmanship that Panelfold puts into every **Scale/12** and **Scale/8** the single panel-wall partitions that stand up to tough commercial and institutional use.

- Strong, durable laminated panels
- Dual-walled Memory Action® vinyl hinges
- Optional sound ratings of STC 25 and STC 30
- Manual or electrical operation
- Heights to eighteen feet

QUALITY CONSTRUCTION

Scale/12 and **Scale/8** partitions offer many of the appearance and reliability advantages of Sonicwal twin panel-wall models: extra-thick high density particleboard panels machine laminated with a wide selection of wood veneers or high pressure laminates with solid faces or carved surface detailing, or with wall carpets, or with economical textured and wood grain vinyls; panels joined and edge-sealed with Panelfold's exclusive

lifetime, dual-walled Memory Action Hinge Design®; extra heavy steel ball-bearing wheels that support alternate panels; and end posts fitted with deep nesting, structural, extruded aluminum end post nose and jamb mould in bronze or natural finish.

FEATURES AVAILABLE

Multiple use areas may be fashioned with **Scale/12** and **Scale/8** partitions incorporating curved tracks, curved and cross-over switches, and two, three and four-way meeting posts. Privacy and cylinder key lock security options are available. Even electrical operation may be specified. Whether selected for sight or sound control, **Scale/12** and **Scale/8** are affordable, good looking hard panel alternatives to other accordion partitioning.

ACOUSTICAL TREATMENT

Scale/12 achieves optional STC 30 and **Scale/8** achieves STC 25 by adding Sonicsweep seals top and bottom, Ceilingshield™, dual-row end post sound seals, positive latches and Panelfold's exclusive Trakseal™ track closure device. "Trakseal" stops