

# Chalet Woods® 2" Wood Blinds



Our Chalet Woods® Wood Blinds represent an affordable option in 100% hardwood. They feature a state-of-the-art hardware system and a variety of colors and finishes.

## KEY FEATURES

- GREENGUARD Indoor Air Quality Certified® and GREENGUARD Children and SchoolsSM certified for low-emitting products
- Optional de-Light™ feature delivers privacy and daylight control
- Selection of custom valances and decorative tapes
- Lifetime Guarantee



455 White Bouquet



450 Distinctly White



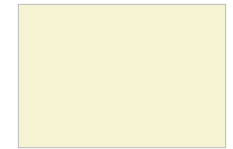
453 Cottonwood



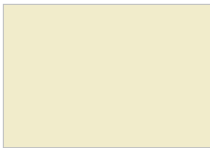
456 China



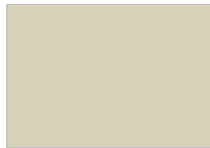
451 Designer White



473 Bavarian Cream



472 Parchment



474 Beechnut



465 Straw



475 Distressed Straw



458 Banister Oak



467 Fruitwood



459 Canyon Brown



460 Nutmeg



466 Hickory



476 Distressed Hickory



468 Black Cherry



477 Distressed Black Cherry



469 Rosewood



470 Walnut



478 Distressed Walnut



471 Espresso



C O N S S O 9 C H W

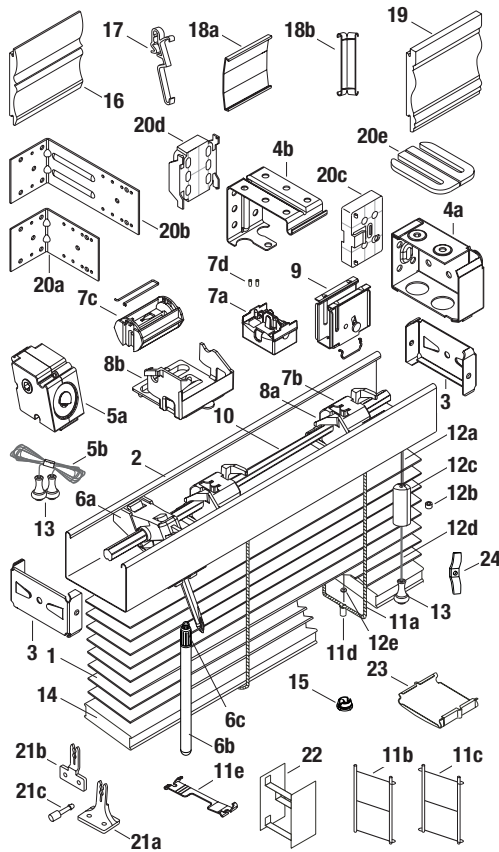
## HunterDouglasContract

WINDOW COVERINGS

© Copyright Hunter Douglas Contract 2009

® Hunter Douglas and its product names are registered trademarks

® The GREENGUARD INDOOR AIR QUALITY CERTIFIED mark is a registered certification mark used under license through the GREENGUARD Environmental Institute.



**STANDARD COMPONENTS:**

- |                                  |                                   |
|----------------------------------|-----------------------------------|
| 1. Slat                          | 12d. Tassel Cord 2.2 mm           |
| 2. Headrail                      | 12e. Lift Cord Grommet            |
| 3. Headrail End Lock             | 13. Wood Tassel                   |
| 4a. Installation Bracket         | 14. Bottom Rail                   |
| 4b. Intermediate Support Bracket | 15. Tape Button                   |
| 5a. Cord Tilter                  | 16. Standard Valance              |
| 5b. Tilt Cord 1.4 mm             | 17. Universal Valance Clip        |
| 6a. Wand Tilter                  | 18a. Valance Splice               |
| 6b. Wand                         | 18b. Universal Valance Corner Key |
| 6c. Wand Connector Kit           |                                   |
| 7a. Tape Roll/Slot Type          |                                   |
| 7b. Tape Roll/Bead Type          |                                   |
| 7c. Wide Tape Roll and Wireform  |                                   |
| 7d. "X" Tape Locator             |                                   |
| 8a. Cable Tape Roll Support      |                                   |
| 8b. Wide Tape Roll Support       |                                   |
| 9. Cordlock                      |                                   |
| 10. Tiltrod                      |                                   |
| 11a. No Loop Cable Tape          |                                   |
| 11b. Single Loop Cable Tape      |                                   |
| 11c. Double Loop Cable Tape      |                                   |
| 11d. 2" Cable Tape Grommet       |                                   |
| 11e. Tape Spacer                 |                                   |
| 12a. Lift Cord 1.4 mm            |                                   |
| 12b. Cord Stop Washer            |                                   |
| 12c. Cord Stop                   |                                   |

**OPTIONAL COMPONENTS:**

- 19. Chancellor™ Valance
- 20a. Short Extension Bracket
- 20b. Long Extension Bracket
- 20c. Spacer Block Bracket
- 20d. Spacer Block Support Bracket
- 20e. Bracket Shim
- 21a. Hold-Down Bracket (Sill)
- 21b. Hold-Down Bracket (Jamb)
- 21c. Hold-Down Pin
- 22. Decorative Tape
- 23. Tape Lock
- 24. Child Safety Kit (Cord Cleat)

**PRODUCT SPECIFICATIONS**

**PART 2 – PRODUCTS**

**2.01 ACCEPTABLE MANUFACTURER**

- A. Hunter Douglas Contract/ 12250 Parkway Centre Dr. / Poway, CA 92064/ Phone: 800-727-8953 Fax: 800-205-9819/ Website: www.hunterdouglascontract.com, or architect approved equivalent. Contact the following for project assistance and dealer referral @ 800-964-2580: (Mideast/Midwest) Keith Burgess ext. #827311, (Southern/Central) Christopher Hagen ext. #827312, (Western/Mountain/Upper Midwest) David Cover ext. #827313, (Northeast) Patrick LeClair ext. #827314.
- B. Product substitutions must be approved by architect minimum of 30 days prior to close of bid.

**2.02 2" HORIZONTAL WOOD BLINDS**

A. **PRODUCT:** Hunter Douglas "Chalet 2" Horizontal Wood Blind"

**B. MATERIALS:**

- 1. **SLATS:** 2" wide x 1/8" thick cut from quality selected hardwood with slat ends stained or painted to match slat color. Furnish not less than nominal 7.2 slats per foot to ensure tight closure and light control. Finish with manufacturer's standard stained and lacquered or painted finish in colors selected by architect from manufacturer's available contract colors.
- 2. **SLAT SUPPORT:** Braided ladders of 100% polyester yarn color compatible with slats and spacing of ladder no more than 44mm. Optional cloth tapes constructed of high strength polyester webbing and spacing of no more than 44mm. Tapes spaced to comply with industry standards for size and weight of blind.
- 3. **HEADRAIL:** U-shaped profile with rolled edges, measuring 1 1/2" x 2 1/4" x .024" constructed of corrosion resistant steel and providing a sleek low profile design. Internally fit with components required for specified performance and designed for smooth, quiet, trouble-free operation. Headrail finish to be standard baked-on polyester and to coordinate with slats. Ends fitted with zinc-coated steel end lock with adjustable tab for centering blinds.
- 4. **BOTTOM RAIL:** 2" wide x 5/8" thick quality selected hardwood with ends stained or painted to match slats. Color-coordinated engineered polymer tape buttons secure the ladder and cord. Finish to be manufacturers standard stained and lacquered or painted finish to match slats.
- 5. **LIFTING MECHANISM:** Engineering polymer and galvanized steel housing cordlocks with polymer roller bearing and steel locking dogs, two-ply polyester cord filler

in braided polyester jacket lift cords meet or exceed commercial specification 1029.86, and cord stop / tassel. Located on either side of individual blind unit as per architect's request.

- 6. **TILTING MECHANISM:** Permanently lubricated and fully enclosed standard cord tilt holds and tilts slats at any angle. Solid steel, corrosion resistant tilt rod. Optional wand tilt of worm and gear construction with slip clutch incorporated into tilter mechanism.
- 7. **OPTIONAL TILT CONTROL WAND:** Rounded 3/8" diameter constructed of quality selected hardwood stained and lacquered or painted to match slats and detachable without tools. Located on either side of individual blind unit as per architect's request.
- 8. **MOUNTING HARDWARE:** Manufacturer's standard .030" steel box brackets with baked-on polyester finish to match headrail with additional support brackets for blinds over 48" wide.
- 9. **VALANCE:** Crafted of selected hardwoods, stained and lacquered or painted to match slats.
- 10. **ADDITIONAL AVAILABLE OPTIONS:** 2 or 3 Blinds on 1 Headrail, Hold Down Brackets, Extension Brackets, Cutouts, Cloth Tapes, Custom Valances.

**2.03 FABRICATION**

- A. Blind measurements shall be accurate to within + 1/8" or as recommended in writing by manufacturer.

**2.04 FINISHES**

- A. **SLAT** finish selection from the following: 450 Distinctly White, 451 Designer White, 453 Cottonwood, 455 White Bouquet, 456 China, 473 Bavarian Cream, 472 Parchment, 474 Beechnut, 458 Banister Oak, 459 Canyon Brown, 460 Nutmeg, 465 Straw, 475 Distressed Straw, 466 Hickory, 476 Distressed Hickory, 467 Fruitwood, 468 Black Cherry, 477 Distressed Black Cherry, 469 Rosewood, 470 Walnut, 478 Distressed Walnut, 471 Espresso.
- B. **SLAT SUPPORT** braided ladders shall be color coordinated with slat. Optional cloth tapes available finishes: 048 Black, 082 Camel, 293 Bordeaux, 336 Chestnut, 378 Sable, 413 Hunter Green, 504 Moss, 627 Heritage Blue, 628 Indigo, 830 Almond, 909 Country Redwood, 973 Antique White.