

Scale/6® • Scale/4® Folding Doors and Partitions



The Practical Alternative for Saving Space With A Great Look

- Strong laminated wood panels
- Dual wall Memory Action® vinyl hinges
- Decorative extruded aluminum track and double nylon or ball-bearing wheels
- Touch-bar™ positive latches and jamb mould or ADA compliant magnetic latches

The variety of panel options has made this handsome folding door collection the outstanding choice of designers for many years. Select from an impressive lineup of rich, genuine wood veneers...economical, high fidelity Woodtex® wood grain vinyls...colorful Startex™, Sandtex™, Hightex™, Fabrictex® and Ropetex® textured vinyls, and a myriad of high pressure plastic laminates in four or six inch wide panels to ten foot heights. Designed to accommodate just about any doorway, closet, room divider, window covering and partition requirement, they save splendidly on space that swinging, bi-folding and sliding doors waste.



GUIDE SPECIFICATIONS FOR SIGNATURE[®], SCALE/6[®] AND SCALE/4[®] FOLDING DOORS

PART 2. PRODUCTS

2.1 FOLDING DOORS shall be manually operated wood, folding type as manufactured by Panefold, Inc., Miami, Florida, U.S.A. and installed by an authorized representative of the manufacturer in openings prepared by others to Signature/Scale/6/Scale/4 requirements.

2.2 TRACK AND HANGERS: Track shall be extruded aluminum. Hanger assemblies with two nylon wheels @ Signature and Scale/4 and two ball-bearing wheels @ Scale/6 shall be suspended on alternate panels. A four-wheel truck hanger assembly shall be installed on each end post.

2.3 PANEL SURFACES: Panels shall be specially laminated engineered wood core, bonded with water resistant, plastic glue and surfaced with (specify one: wood veneer; wood grain vinyl; or textured vinyl @ Signature; or wood veneer; wood grain vinyl; textured vinyl; or high pressure plastic laminate (@ Scale/6 and Scale/4). Genuine woods, wood grains, and colors from manufacturer's selectors.

2.4 CONNECTOR MOULDINGS (SIGNATURE): Panels shall be connected by shaped wood mouldings.

2.5 CONNECTOR HINGES (SCALE/6 AND SCALE/4): Panels shall be hinged and edge sealed against sound light and air transmission with heavy duty, dual-wall, flame resistant, extruded vinyl. Hinges shall be securely locked into and protect the panel edges. They shall provide "Memory-Action" causing the panels to extend and stack equally, smoothly, and quietly. Color from manufacturer's selector.

2.6 SCALE/6 DECORATIVE ACCENTS: shall be (specify: open woven cane inserts; closed woven cane inserts; clear cracked ice translucent inserts; amber cracked ice translucent inserts; clear transparent inserts; or carved [one or both sides] panels.)

2.7 TRIM: Doors shall be supplied with (specify: decorative track; optional plain track mould to conceal track; or optional plain track with extruded aluminum sub-channel for recessed track). A jamb mould for jamb closure shall be furnished.

2.8 HARDWARE: Handles, Touch-Bar automatic latches, all necessary screws, installation hardware and instructions shall be furnished. Security units shall be as specified: Privacy latch and emergency release; cylinder lock one side only; cylinder lock one side, privacy lock other, cylinder lock two sides. Master-keyed insert type cylinder with lazy cam and flat tail piece, by others, shall be installed in lieu of regularly furnished cylinder.

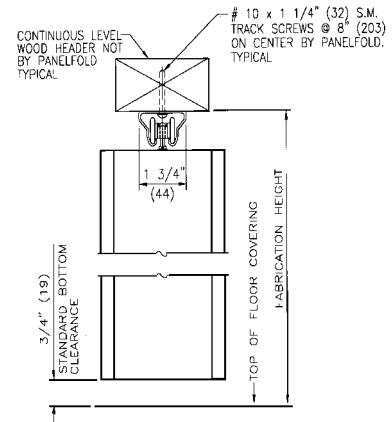
2.9 STACK FORMULA: (Approximately) Signature 1"/ft. (82 mm/m); Scale /6 and Scale/4 1-1/4"/ft.



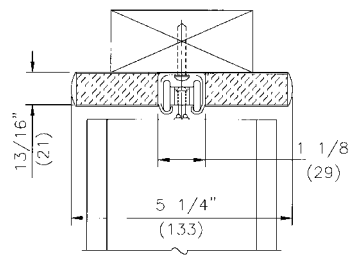
All models have a top aluminum track.

VERTICAL SECTION - HEAD DETAILS

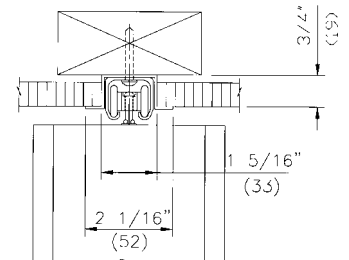
HEAD TYPE 1
SURFACE MOUNTED INSTALLATION
DECORATIVE TRACK
BY PANEFOLD-STANDARD



HEAD TYPE 2
SURFACE MOUNTED INSTALLATION
TRACK AND TRACK MOULD
BY PANEFOLD-OPTIONAL



HEAD TYPE 3
RECESSED INSTALLATION
TRACK AND SUBCHANNEL
BY PANEFOLD-OPTIONAL

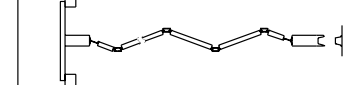
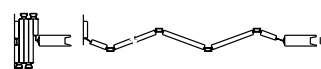


All Dimensions Shown In Parentheses Are Millimeters

TYPES OF APPLICATIONS

SINGLE FIXED-JAMB PARTITION

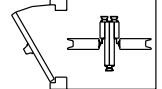
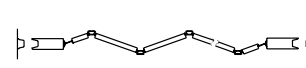
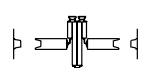
SLIDING JAMB PARTITION-POCKET INSTALLATION



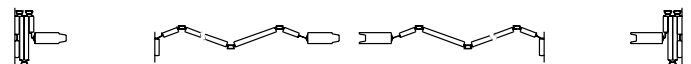
STANDARD INSTALLATION

DOUBLE-END POST PARTITION

POCKET INSTALLATION



JOINING PAIR OF FIXED-JAMB PARTITIONS



CANED



CARVED

Scale/6 panels may be specified with decorative panel options including carved panel detailing, natural cane, translucent, clear or amber "cracked ice", transparent, or mirrored inserts.

GUIDE SPECIFICATIONS FOR CRITERION® RIGID VINYL FOLDING DOORS

PART 2. PRODUCTS

2.1 FOLDING DOORS shall be manually operated PVC, folding type as manufactured by Panefold, Inc., Miami, Florida, U.S.A. and installed by an authorized representative of the manufacturer in openings prepared by others to Criterion requirements.

2.2 TRACK AND HANGERS: Track shall be extruded aluminum. Hanger assemblies with two nylon wheels shall be suspended on alternate panels and on each end post.

2.3 PANELS shall be 4-1/2 (114mm) wide by .040" (10mm) thick, permanently fire resistant, extruded, rigid Polyvinyl Chloride (PVC).

2.4 HINGING: Criterion panels shall be interconnected by rigid, self-mating hinges formed as an integral part of each panel running the full height of the door. Within the hinge structure, integrated, continuous, extruded PVC veins shall be incorporated for proper hinge alignment.

2.5 TRIM: Doors shall be supplied with (specify: decorative track; optional plain track with track mould to conceal track; or optional plain track with extruded aluminum sub-channel for recessed track).

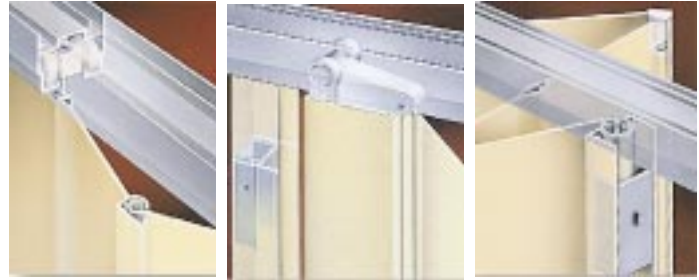
2.6 END POST: Rigid PVC 1-3/4" (45mm) wide by 1/2" (13mm) thick, double wall end post shall be equipped with handles and magnetic latch with nesting jamb mould and integral strike plate.

2.7 JAMB POST: Centerline PVC jamb post shall snap over concealed jamb clips providing a tight attachment to the jamb. There shall be no exposed fasteners.

2.8 HARDWARE: Each door shall be individually cartoned. Each carton shall contain track and all installing hardware and manufacturer's illustrated installation and service instructions.

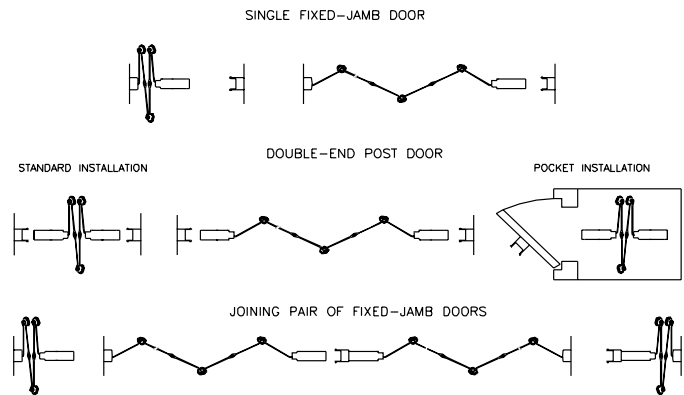
2.9 STACK FORMULA: Approximately 3/4"/ft² (19mm/m²) plus 2-1/2 (64mm) for each end post.

2.10 HANGING WEIGHT: Approximately 5/8 lbs./ft.2 (3KG/m²).

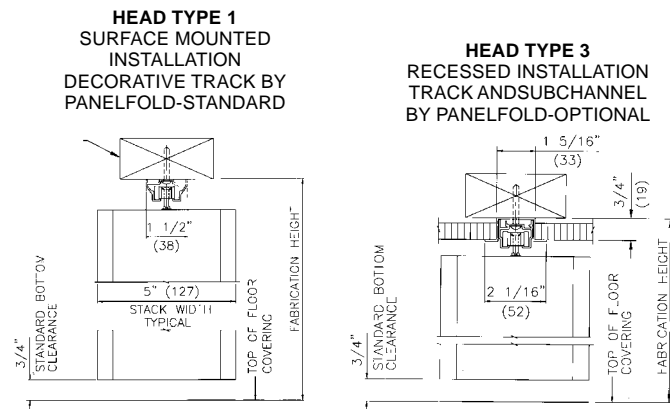


Criterion features single wall panels and rigid, self-mating hinges that travel smoothly on lifetime nylon wheels along an aluminum track.

TYPES OF APPLICATIONS



VERTICAL SECTION - HEAD DETAILS



All Dimensions Shown In Parentheses Are Millimeters



Rigid Vinyl Panel Color Selections

Because the color is added before the panels are extruded, the color can not wear off. The panels never need painting. Color selectors are available.



See Page 8 for Product Illustrations

Panelfold® Surfaces & Colors

You may select from an extensive line of surfaces and colors. Color selectors are available.

WOOD VENEERS



WHITE ASH



NATURAL BIRCH



RED OAK



AMERICAN WALNUT

WOODTEX WOOD GRAIN VINYL



WHEATWOOD™



HONEYWOOD™



CANYONWOOD™



SABLEWOOD™

STARTEX™ TEXTURED VINYL



WHITE



ROSE MIST



OYSTER



CLOUD

SANDEX™ MULTICOLOR VINYL



OYSTER



GREIGE



EARLY SKY



MORNING MIST



DOVER



CORAL SAND



PEARL



SEA FOAM

FABRICTEX FABRIC TEXTURED VINYL



DOVER



CORAL SAND



PEARL



SEA FOAM

ROPETEX ROPE TEXTURED VINYL



SNOW DRIFT



TAUPE



FROSTY



CLOUD

HIGHTEX™ HIGHLY TEXTURED VINYL



CLOUD



ANTIQUE ROSE



FAWN



CEMENT

RIBTEX BASIC™ VERTICAL RIB WALL CARPET



MALIBU



SAND



BUCKSKIN



TAUPE



CLOUD



FLINT



MEADOW



CARNIVAL

WOVENTEX® I & II PANEL FABRICS



ROSE



ORCHID



BRITTANY



TWILIGHT

WOVENTEX® III PANEL FABRICS



BURNISH



LILAC



SUN DRENCHED



MORRIS CODE

TEK-WALL® 1000® PANEL FABRICS



BISCUIT BEIGE



WOODROSE PETAL



PEBBLE BEACH

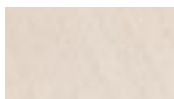


SPRAY MIST



In colors to blend or contrast with panel finish. Color selection card is available.

WILSON ART® OR FORMICA® DECORATIVE LAMINATES



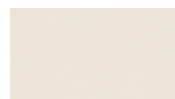
SANIBEL MAPLE



SHERIL WALNUT



WINDSOR MAHOGANY



CASHMERE



STORM NEBULA

For complete color selections, see Selectors, Interactive CD-ROM or Panelfold website at www.panelfold.com