

Slotted Slip Track (SLT)



Slotted Track manufactured by CEMCO and distributed by Marino\WARE is used at the head of wall and can absorb up to 1" of total vertical movement while providing a positive attachment for wall framing. The positive attachment allows for greater load resistance with thinner gauges of material. Slotted track is formed from only prime steel conforming to applicable ASTM requirements

MATERIAL: 20ga (33 mil-33ksi), 18ga (43 mil-33ksi), 16ga (54 mil- 50ksi)

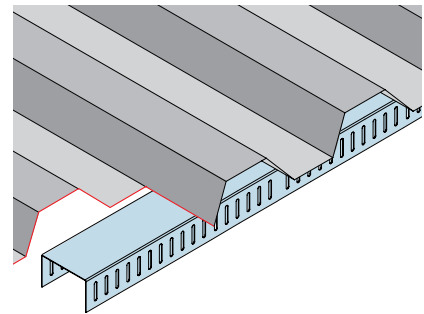
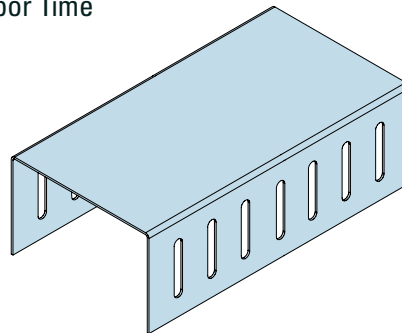
WEB SIZES: 2 1/2", 3", 4", 6", 8"

FINISH: G60 – 18ga & 16ga, G40-20ga

APPROVALS: ICC ESR-2012, UL 2079 Compliant
ASTM E 119, ASTM 3 814, ASTM E 1966, ULCS115-M95

- One-piece design
- Positive attachment to framing
- Absorbs vertical deflection
- Simple Installation and Reduced Labor Time

Marino\WARE Model No.	Section Designation	Mil (ga)	Track Member Width	Flange
212SLT2010	250CST250-30	33 (20 ga)	2 1/2"	2 1/2"
358SLT1610	362CST250-54	54 (16 ga)	3 5/8"	2 1/2"
358SLT1810	362CST250-43	43 (18 ga)	3 5/8"	2 1/2"
358SLT2010	362CST250-30	33 (20 ga)	3 5/8"	2 1/2"
400SLT1610	400CST250-54	54 (16 ga)	4"	2 1/2"
400SLT1810	400CST250-43	43 (18 ga)	4"	2 1/2"
400SLT2010	400CST250-30	33 (20 ga)	4"	2 1/2"
600SLT1610	600CST250-54	54 (16 ga)	6"	2 1/2"
600SLT1810	600CST250-43	43 (18 ga)	6"	2 1/2"
600SLT2010	600CST250-33	33 (20 ga)	6"	2 1/2"
800SLT1610	800CST250-54	54 (16 ga)	8"	2 1/2"
800SLT1810	800CST250-43	43 (18 ga)	8"	2 1/2"
800SLT2010	800CST250-33	33 (20 ga)	8"	2 1/2"



All information shown for Slotted Slip Track provided courtesy of CEMCO.

Technical Support

Marino\WARE offers its customers free expert technical assistance with the selection and use of our FrameRite Connectors. Technical representatives are standing by and ready to assist you. Technical Services can be reached at **1-866-545-1545**, at connectors@marinoware.com or at technicalservices@marinoware.com. In most cases Technical Services representatives can provide immediate responses. In addition to Technical Services, Marino\WARE's DesignRite Engineering services can design the FrameRite Connectors best suited for your project detailed as part of your shop drawings when required by the project.



NEW JERSEY FACILITY

400 Metuchen Road
South Plainfield, NJ 07080
(800) 627-4661
(908) 757-9000
(908) 412-1442 FAX

GEORGIA FACILITY

777 Greenbelt Parkway
Griffin, GA 30223
(800) 504-8199
(678) 688-1312
(678) 688-1379 FAX

INDIANA FACILITY

4245 Railroad Avenue
East Chicago, IN 46312
(866) 636-6002
(219) 378-7100
(219) 378-7106 FAX

TEXAS FACILITY

10101 Bay Area Boulevard
Pasadena, TX 77507
(866) 852-9510
(281) 283-8100
(281) 283-8105 FAX

NEW YORK SALES OFFICE

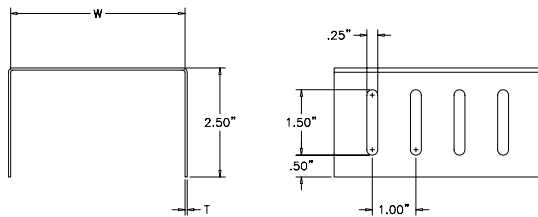
137 Broadway, Suite B
Amityville, NY 11701
(800) 627-4667
(631) 691-2200
(631) 691-1492 FAX

ENGINEERING OFFICE

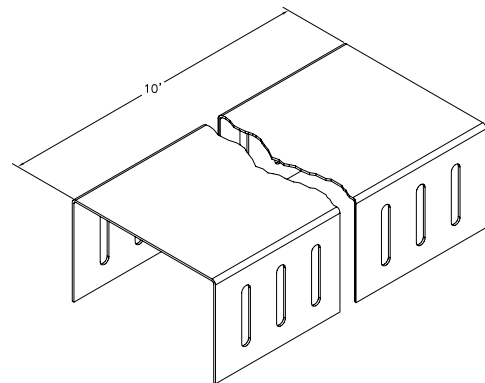
175 Country Club Drive, Suite 200A
Stockbridge, GA 30281
(866) 545-1545
(770) 507-2600
(770) 507-2605 FAX

Section Designation	Design Thickness (inch)	Gross Section Properties							Effective Section Properties					
		F_y (ksi)	Weight (lbs/ft)	Area (in ²)	I_x (in ⁴)	r_x (in)	I_y (in ⁴)	r_y (in)	I_x (in ⁴)	S_x (t) (in ³)	S_x (b) (in ³)	I_y (in ⁴)	S_y (l) (in ³)	S_y (r) (in ³)
250CST250-18	0.0188	33	0.267	0.079	0.068	0.927	0.080	1.006	0.055	0.064	0.034	0.054	0.058	0.033
250CST250-30	0.0312	33	0.444	0.131	0.112	0.925	0.133	1.011	0.098	0.126	0.056	0.099	0.096	0.063
250CST250-43	0.0451	33	0.640	0.188	0.160	0.923	0.193	1.012	0.148	0.212	0.082	0.147	0.136	0.096
250CST250-54	0.0566	50	0.802	0.236	0.200	0.922	0.243	1.015	0.186	0.266	0.103	0.186	0.169	0.121
350CST250-18	0.0188	33	0.331	0.097	0.072	0.862	0.176	1.343	0.057	0.069	0.034	0.113	0.091	0.049
350CST250-30	0.0312	33	0.549	0.162	0.120	0.861	0.293	1.346	0.105	0.156	0.057	0.214	0.150	0.099
350CST250-43	0.0451	33	0.793	0.233	0.172	0.859	0.424	1.348	0.160	0.271	0.084	0.334	0.216	0.161
350CST250-54	0.0566	50	0.994	0.292	0.215	0.857	0.533	1.351	0.201	0.340	0.105	0.421	0.269	0.202
362CST250-18	0.0188	33	0.339	0.100	0.073	0.855	0.191	1.384	0.057	0.069	0.034	0.122	0.095	0.051
362CST250-30	0.0312	33	0.562	0.165	0.121	0.853	0.318	1.387	0.105	0.158	0.057	0.232	0.158	0.103
362CST250-43	0.0451	33	0.812	0.239	0.173	0.851	0.461	1.389	0.161	0.279	0.084	0.362	0.226	0.168
362CST250-54	0.0566	50	1.018	0.300	0.216	0.850	0.580	1.391	0.202	0.349	0.105	0.456	0.283	0.212
400CST250-18	0.0188	33	0.363	0.107	0.074	0.834	0.242	1.506	0.057	0.070	0.034	0.151	0.109	0.056
400CST250-30	0.0312	33	0.602	0.177	0.123	0.832	0.403	1.508	0.106	0.162	0.058	0.334	0.182	0.148
400CST250-43	0.0451	33	0.870	0.256	0.176	0.830	0.584	1.511	0.165	0.300	0.084	0.483	0.262	0.212
400CST250-54	0.0566	50	1.090	0.321	0.220	0.829	0.734	1.512	0.206	0.375	0.106	0.607	0.327	0.265
600CST250-18	0.0188	33	0.491	0.144	0.079	0.740	0.658	2.135	0.057	0.071	0.034	0.412	0.191	0.105
600CST250-33	0.0346	33	0.903	0.266	0.145	0.738	1.212	2.136	0.123	0.209	0.064	0.973	0.364	0.284
600CST250-43	0.0451	33	1.176	0.346	0.188	0.737	1.581	2.137	0.170	0.342	0.085	1.365	0.481	0.416
600CST250-54	0.0566	50	1.475	0.434	0.235	0.735	1.985	2.139	0.213	0.431	0.106	1.713	0.601	0.520
800CST250-18	0.0188	33	0.619	0.182	0.082	0.671	1.370	2.743	0.058	0.072	0.034	0.764	0.291	0.140
800CST250-33	0.0346	33	1.138	0.335	0.150	0.669	2.521	2.744	0.124	0.215	0.065	1.792	0.557	0.367
800CST250-43	0.0451	33	1.483	0.436	0.195	0.668	3.286	2.745	0.172	0.362	0.085	2.688	0.742	0.597
800CST250-54	0.0566	50	1.860	0.547	0.243	0.666	4.124	2.746	0.216	0.457	0.107	3.415	0.931	0.763

For Sl: 1 inch = 25.4 mm, 1 ksi = 6.8948 kPa, 1 lb/ft = 14.594 N/m.



T	W
20 ga (33 mil)	2 1/2"
18ga (43 mil)	3 5/8"
16ga (54 mil)	4"
	6"
	8"



All information shown for Slotted Slip Track provided courtesy of CEMCO.



NEW JERSEY FACILITY

400 Metuchen Road
South Plainfield, NJ 07080
(800) 627-4661
(908) 757-9000
(908) 412-1442 FAX

GEORGIA FACILITY

777 Greenbelt Parkway
Griffin, GA 30223
(800) 504-8199
(678) 688-1312
(678) 688-1379 FAX

INDIANA FACILITY

4245 Railroad Avenue
East Chicago, IN 46312
(866) 636-6002
(219) 378-7100
(219) 378-7106 FAX

TEXAS FACILITY

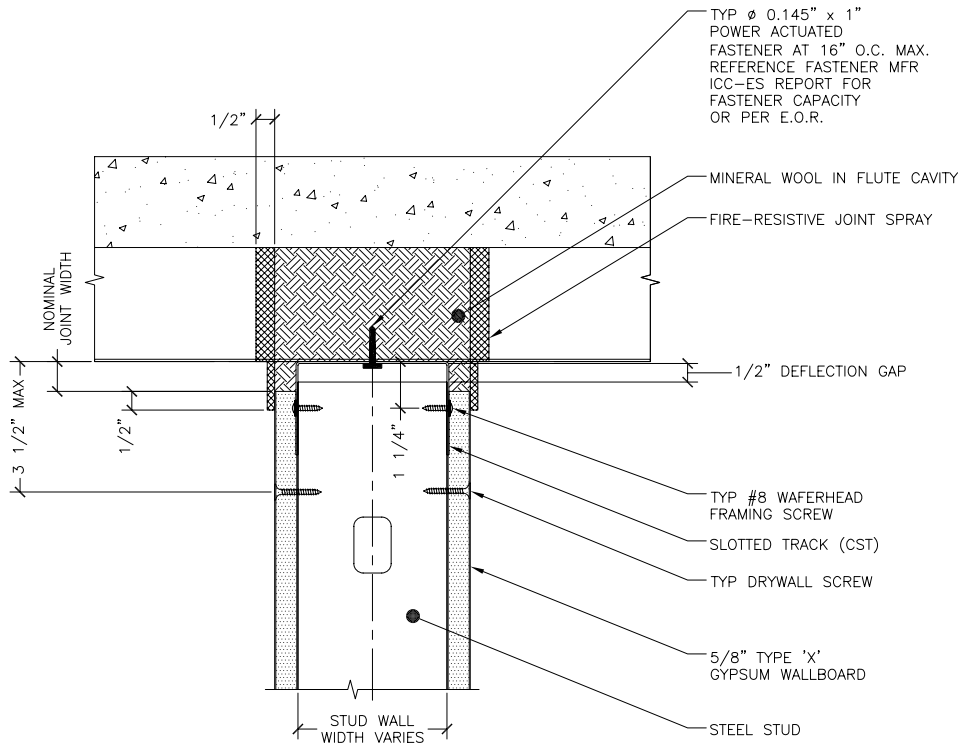
10101 Bay Area Boulevard
Pasadena, TX 77507
(866) 852-9510
(281) 283-8100
(281) 283-8105 FAX

NEW YORK SALES OFFICE

137 Broadway, Suite B
Amityville, NY 11701
(800) 627-4667
(631) 691-2200
(631) 691-1492 FAX

ENGINEERING OFFICE

175 Country Club Drive, Suite 200A
Stockbridge, GA 30281
(866) 545-1545
(770) 507-2600
(770) 507-2605 FAX



- NOTES:**
1. Cyclical Design - UL 2079 Test Standard.
 2. Do not screw drywall to slotted track.
 3. Reference ITS / Warnock Hersey directory for specific information.
 4. Reference UL Fire Resistance Directory for specific information.

HEAD OF WALL SYSTEM 3, PERPENDICULAR TO FLUTE DETAIL
 WITH $\pm 1/2$ INCH ALLOWABLE VERTICAL MOVEMENT
 1 HR. FIRE RESISTIVE ASSEMBLY
 UL-2079 TEST STD.



NEW JERSEY FACILITY
 400 Metuchen Road
 South Plainfield, NJ 07080
 (800) 627-4661
 (908) 757-9000
 (908) 412-1442 FAX

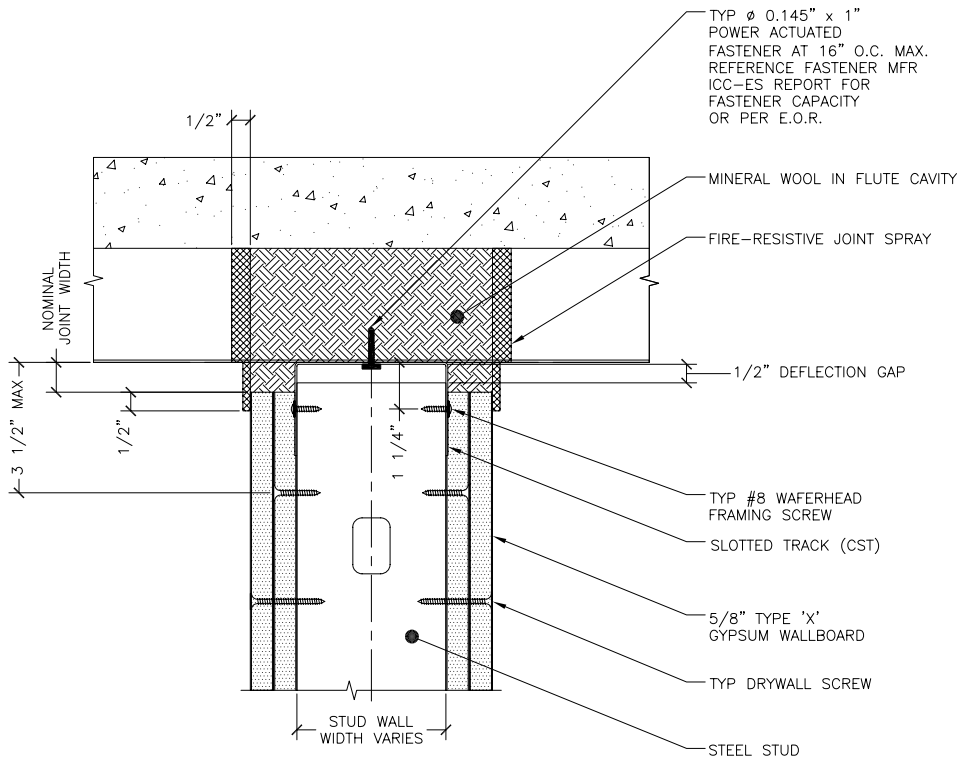
GEORGIA FACILITY
 777 Greenbelt Parkway
 Griffin, GA 30223
 (800) 504-8199
 (678) 688-1312
 (678) 688-1379 FAX

INDIANA FACILITY
 4245 Railroad Avenue
 East Chicago, IN 46312
 (866) 636-6002
 (219) 378-7100
 (219) 378-7106 FAX

TEXAS FACILITY
 10101 Bay Area Boulevard
 Pasadena, TX 77507
 (866) 852-9510
 (281) 283-8100
 (281) 283-8105 FAX

NEW YORK SALES OFFICE
 137 Broadway, Suite B
 Amityville, NY 11701
 (800) 627-4667
 (631) 691-2200
 (631) 691-1492 FAX

ENGINEERING OFFICE
 175 Country Club Drive, Suite 200A
 Stockbridge, GA 30281
 (866) 545-1545
 (770) 507-2600
 (770) 507-2605 FAX

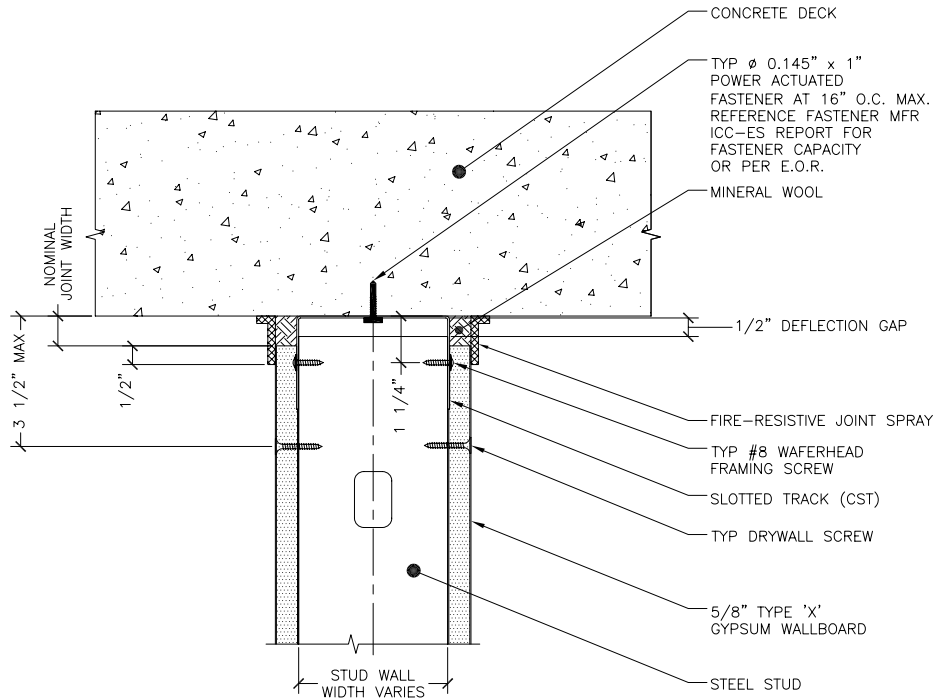


- NOTES:**
1. Cyclical Design – UL 2079 Test Standard.
 2. Do not screw drywall to slotted track.
 3. Reference ITS / Warnock Hersey directory for specific information.
 4. Reference UL Fire Resistance Directory for specific information.

HEAD OF WALL SYSTEM 3, PERPENDICULAR TO FLUTE DETAIL
 WITH ±1/2 INCH ALLOWABLE VERTICAL MOVEMENT
 2 HR. FIRE RESISTIVE ASSEMBLY
 UL-2079 TEST STD.



<p>NEW JERSEY FACILITY</p> <p>400 Metuchen Road South Plainfield, NJ 07080</p> <p>(800) 627-4661 (908) 757-9000 (908) 412-1442 FAX</p>	<p>GEORGIA FACILITY</p> <p>777 Greenbelt Parkway Griffin, GA 30223</p> <p>(800) 504-8199 (678) 688-1312 (678) 688-1379 FAX</p>	<p>INDIANA FACILITY</p> <p>4245 Railroad Avenue East Chicago, IN 46312</p> <p>(866) 636-6002 (219) 378-7100 (219) 378-7106 FAX</p>	<p>TEXAS FACILITY</p> <p>10101 Bay Area Boulevard Pasadena, TX 77507</p> <p>(866) 852-9510 (281) 283-8100 (281) 283-8105 FAX</p>	<p>NEW YORK SALES OFFICE</p> <p>137 Broadway, Suite B Amityville, NY 11701</p> <p>(800) 627-4667 (631) 691-2200 (631) 691-1492 FAX</p>	<p>ENGINEERING OFFICE</p> <p>175 Country Club Drive, Suite 200A Stockbridge, GA 30281</p> <p>(866) 545-1545 (770) 507-2600 (770) 507-2605 FAX</p>
---	---	---	---	---	--



- NOTES:**
1. Cyclical Design – UL 2079 Test Standard.
 2. Do not screw drywall to slotted track.
 3. Reference ITS / Warnock Hersey directory for specific information.
 4. Reference UL Fire Resistance Directory for specific information.

HEAD OF WALL SYSTEM 4,
 ±1/2 INCH ALLOWABLE VERTICAL MOVEMENT
 1 HR. FIRE RESISTIVE ASSEMBLY
 UL-2079 TEST STD.



NEW JERSEY FACILITY

400 Metuchen Road
 South Plainfield, NJ 07080
 (800) 627-4661
 (908) 757-9000
 (908) 412-1442 FAX

GEORGIA FACILITY

777 Greenbelt Parkway
 Griffin, GA 30223
 (800) 504-8199
 (678) 688-1312
 (678) 688-1379 FAX

INDIANA FACILITY

4245 Railroad Avenue
 East Chicago, IN 46312
 (866) 636-6002
 (219) 378-7100
 (219) 378-7106 FAX

TEXAS FACILITY

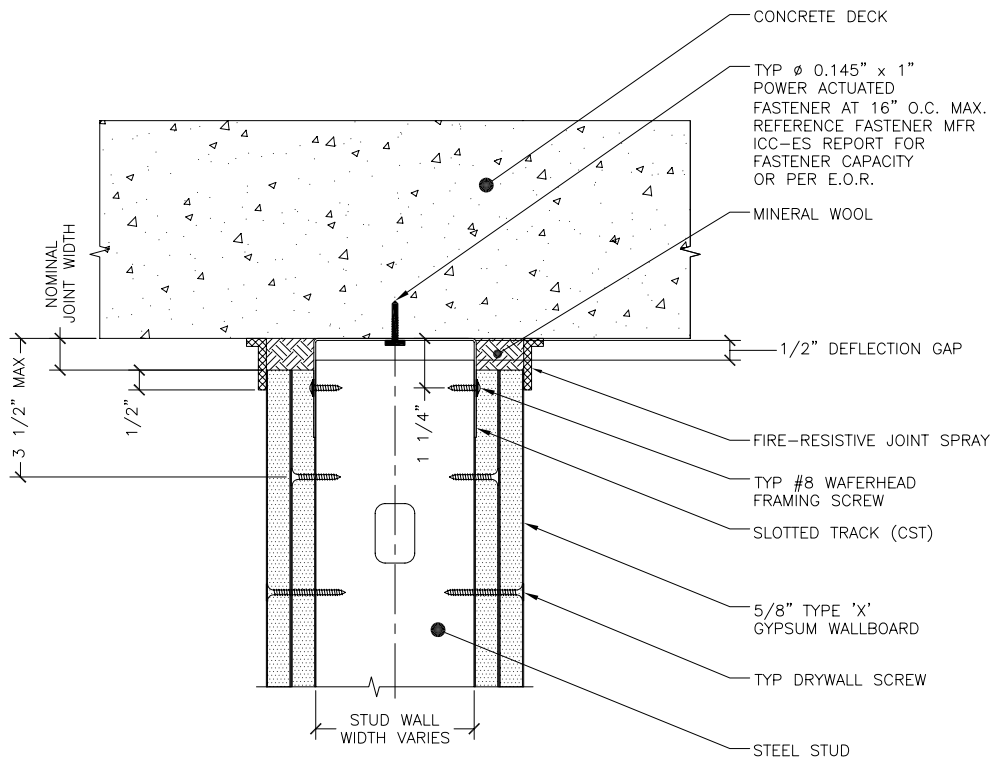
10101 Bay Area Boulevard
 Pasadena, TX 77507
 (866) 852-9510
 (281) 283-8100
 (281) 283-8105 FAX

NEW YORK SALES OFFICE

137 Broadway, Suite B
 Amityville, NY 11701
 (800) 627-4667
 (631) 691-2200
 (631) 691-1492 FAX

ENGINEERING OFFICE

175 Country Club Drive, Suite 200A
 Stockbridge, GA 30281
 (866) 545-1545
 (770) 507-2600
 (770) 507-2605 FAX



NOTES:

1. Cyclical Design - UL 2079 Test Standard.
2. Do not screw drywall to slotted track.
3. Reference ITS / Warnock Hersey directory for specific information.
4. Reference UL Fire Resistance Directory for specific information.

HEAD OF WALL SYSTEM 4,
 $\pm 1/2$ INCH ALLOWABLE VERTICAL MOVEMENT
 2 HR. FIRE RESISTIVE ASSEMBLY
 UL-2079 TEST STD.



NEW JERSEY FACILITY

400 Metuchen Road
 South Plainfield, NJ 07080
 (800) 627-4661
 (908) 757-9000
 (908) 412-1442 FAX

GEORGIA FACILITY

777 Greenbelt Parkway
 Griffin, GA 30223
 (800) 504-8199
 (678) 688-1312
 (678) 688-1379 FAX

INDIANA FACILITY

4245 Railroad Avenue
 East Chicago, IN 46312
 (866) 636-6002
 (219) 378-7100
 (219) 378-7106 FAX

TEXAS FACILITY

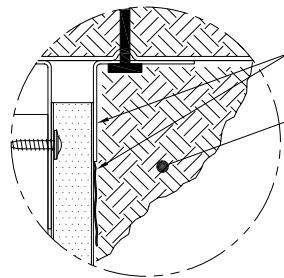
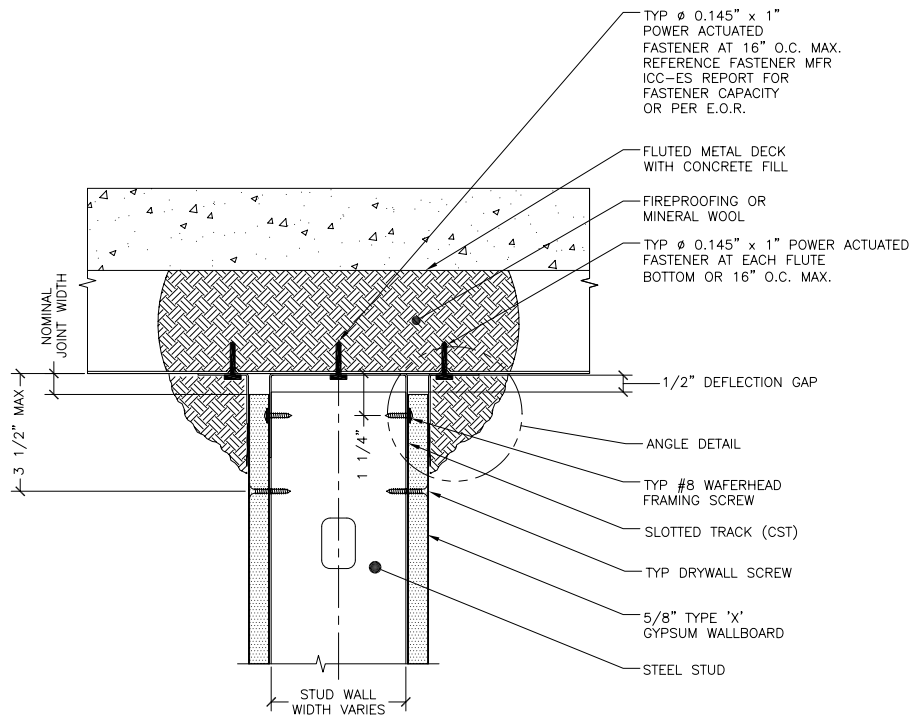
10101 Bay Area Boulevard
 Pasadena, TX 77507
 (866) 852-9510
 (281) 283-8100
 (281) 283-8105 FAX

NEW YORK SALES OFFICE

137 Broadway, Suite B
 Amityville, NY 11701
 (800) 627-4667
 (631) 691-2200
 (631) 691-1492 FAX

ENGINEERING OFFICE

175 Country Club Drive, Suite 200A
 Stockbridge, GA 30281
 (866) 545-1545
 (770) 507-2600
 (770) 507-2605 FAX



ANGLE DETAIL

- NOTES:**
1. Cyclical Design – UL 2079 Test Standard.
 2. Do not screw drywall to slotted track.
 3. Reference ITS / Warnock Hersey directory for specific information.
 4. Reference UL Fire Resistance Directory for specific information.

HEAD OF WALL SYSTEM 5, PERPENDICULAR TO FLUTE DETAIL
 WITH $\pm 1/2$ INCH ALLOWABLE VERTICAL MOVEMENT
 1 HR. FIRE RESISTIVE ASSEMBLY
 UL-2079 TEST STD.



NEW JERSEY FACILITY

400 Metuchen Road
 South Plainfield, NJ 07080
 (800) 627-4661
 (908) 757-9000
 (908) 412-1442 FAX

GEORGIA FACILITY

777 Greenbelt Parkway
 Griffin, GA 30223
 (800) 504-8199
 (678) 688-1312
 (678) 688-1379 FAX

INDIANA FACILITY

4245 Railroad Avenue
 East Chicago, IN 46312
 (866) 636-6002
 (219) 378-7100
 (219) 378-7106 FAX

TEXAS FACILITY

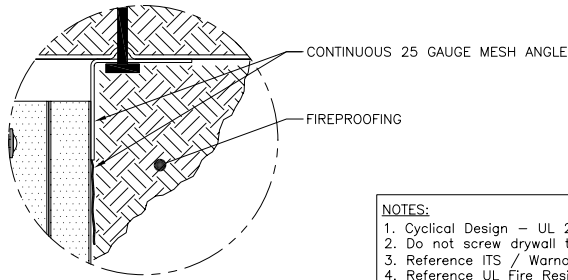
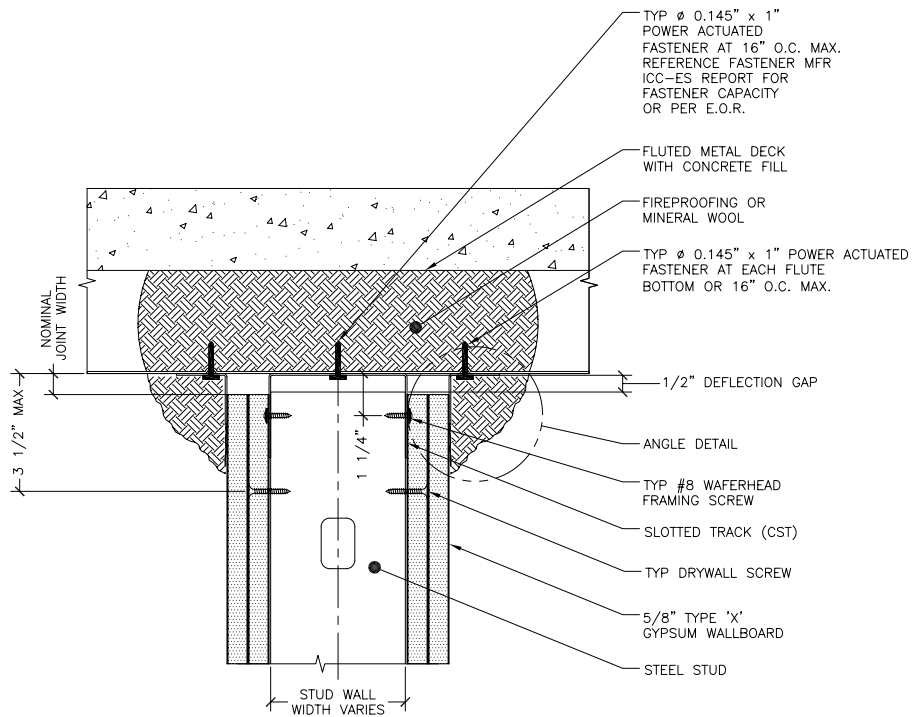
10101 Bay Area Boulevard
 Pasadena, TX 77507
 (866) 852-9510
 (281) 283-8100
 (281) 283-8105 FAX

NEW YORK SALES OFFICE

137 Broadway, Suite B
 Amityville, NY 11701
 (800) 627-4667
 (631) 691-2200
 (631) 691-1492 FAX

ENGINEERING OFFICE

175 Country Club Drive, Suite 200A
 Stockbridge, GA 30281
 (866) 545-1545
 (770) 507-2600
 (770) 507-2605 FAX



ANGLE DETAIL

- NOTES:**
1. Cyclical Design – UL 2079 Test Standard.
 2. Do not screw drywall to slotted track.
 3. Reference ITS / Warnock Hersey directory for specific information.
 4. Reference UL Fire Resistance Directory for specific information.

HEAD OF WALL SYSTEM 5, PERPENDICULAR TO FLUTE DETAIL
 WITH $\pm 1/2$ INCH ALLOWABLE VERTICAL MOVEMENT
 2 HR. FIRE RESISTIVE ASSEMBLY
 UL-2079 TEST STD.



NEW JERSEY FACILITY

400 Metuchen Road
 South Plainfield, NJ 07080
 (800) 627-4661
 (908) 757-9000
 (908) 412-1442 FAX

GEORGIA FACILITY

777 Greenbelt Parkway
 Griffin, GA 30223
 (800) 504-8199
 (678) 688-1312
 (678) 688-1379 FAX

INDIANA FACILITY

4245 Railroad Avenue
 East Chicago, IN 46312
 (866) 636-6002
 (219) 378-7100
 (219) 378-7106 FAX

TEXAS FACILITY

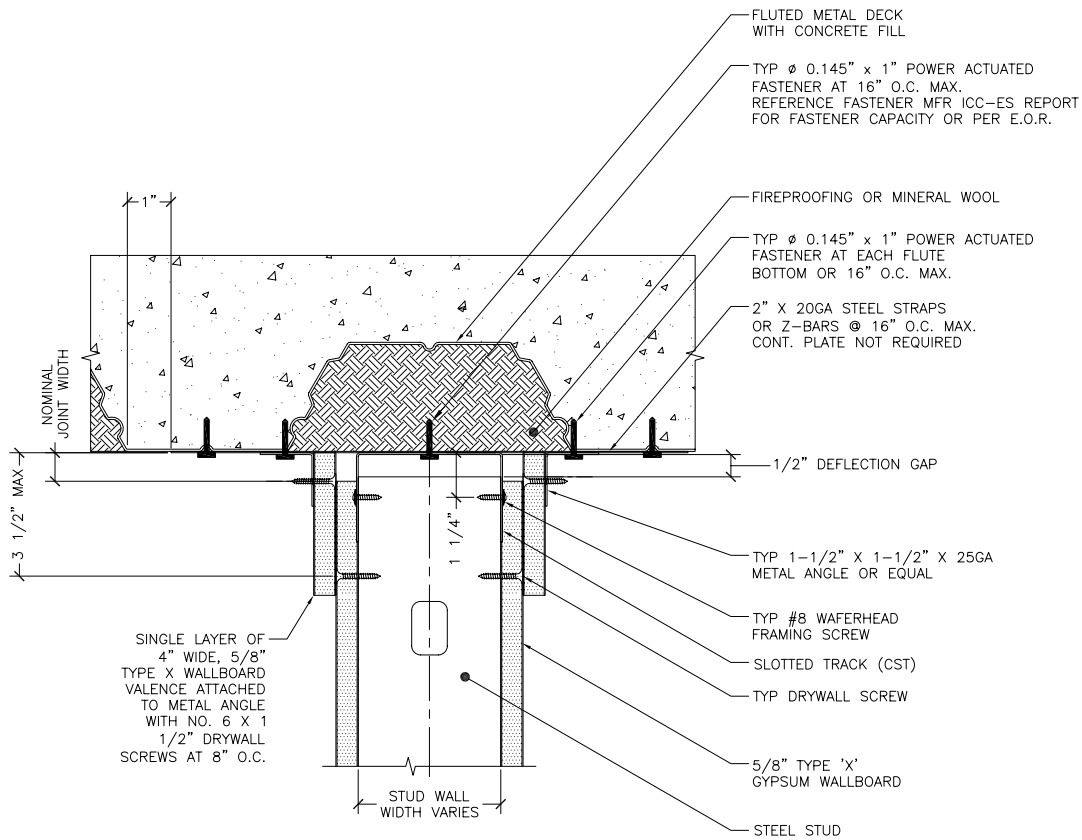
10101 Bay Area Boulevard
 Pasadena, TX 77507
 (866) 852-9510
 (281) 283-8100
 (281) 283-8105 FAX

NEW YORK SALES OFFICE

137 Broadway, Suite B
 Amityville, NY 11701
 (800) 627-4667
 (631) 691-2200
 (631) 691-1492 FAX

ENGINEERING OFFICE

175 Country Club Drive, Suite 200A
 Stockbridge, GA 30281
 (866) 545-1545
 (770) 507-2600
 (770) 507-2605 FAX



NOTES:

1. Cyclical Design - UL 2079 Test Standard.
2. Do not screw drywall to slotted track.
3. Reference ITS / Warnock Hersey directory for specific information.
4. Reference UL Fire Resistance Directory for specific information.

HEAD OF WALL SYSTEM 6, PARALLEL TO FLUTE DETAIL
 WITH $\pm 1/2$ INCH ALLOWABLE VERTICAL MOVEMENT
 1 HR. FIRE RESISTIVE ASSEMBLY
 UL-2079 TEST STD.



NEW JERSEY FACILITY

400 Metuchen Road
 South Plainfield, NJ 07080
 (800) 627-4661
 (908) 757-9000
 (908) 412-1442 FAX

GEORGIA FACILITY

777 Greenbelt Parkway
 Griffin, GA 30223
 (800) 504-8199
 (678) 688-1312
 (678) 688-1379 FAX

INDIANA FACILITY

4245 Railroad Avenue
 East Chicago, IN 46312
 (866) 636-6002
 (219) 378-7100
 (219) 378-7106 FAX

TEXAS FACILITY

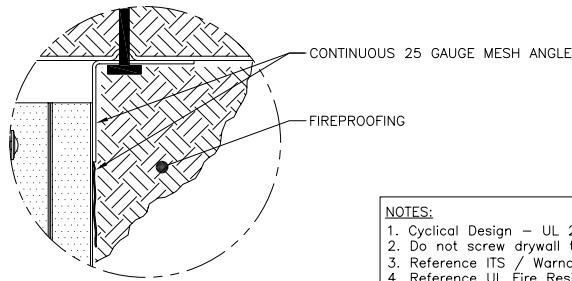
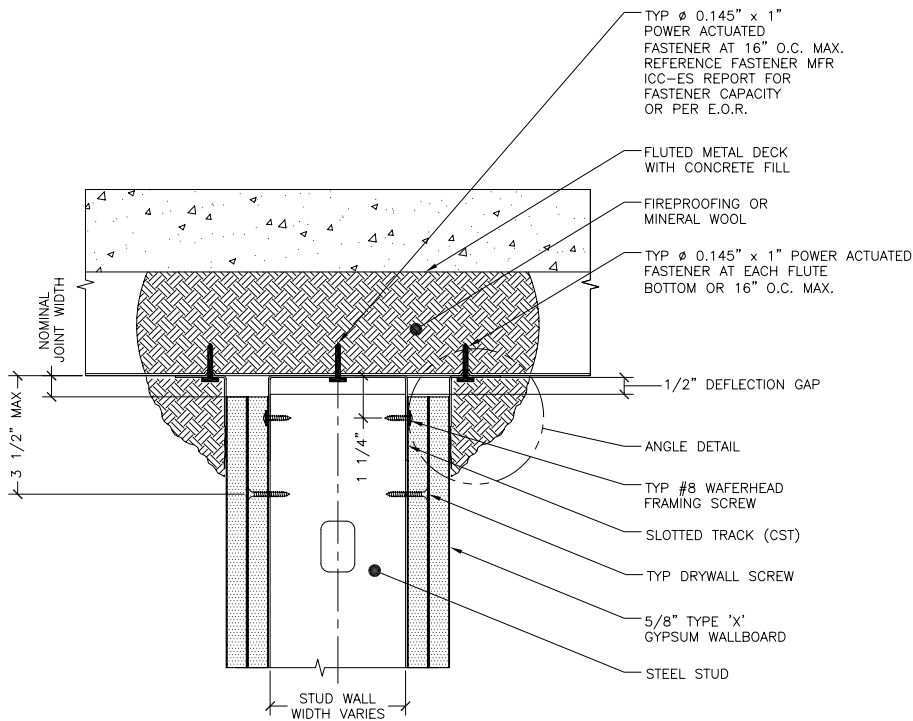
10101 Bay Area Boulevard
 Pasadena, TX 77507
 (866) 852-9510
 (281) 283-8100
 (281) 283-8105 FAX

NEW YORK SALES OFFICE

137 Broadway, Suite B
 Amityville, NY 11701
 (800) 627-4667
 (631) 691-2200
 (631) 691-1492 FAX

ENGINEERING OFFICE

175 Country Club Drive, Suite 200A
 Stockbridge, GA 30281
 (866) 545-1545
 (770) 507-2600
 (770) 507-2605 FAX



ANGLE DETAIL

- NOTES:**
1. Cyclical Design – UL 2079 Test Standard.
 2. Do not screw drywall to slotted track.
 3. Reference ITS / Warnock Hersey directory for specific information.
 4. Reference UL Fire Resistance Directory for specific information.

HEAD OF WALL SYSTEM 5, PERPENDICULAR TO FLUTE DETAIL
 WITH ±1/2 INCH ALLOWABLE VERTICAL MOVEMENT
 2 HR. FIRE RESISTIVE ASSEMBLY
 UL-2079 TEST STD.



NEW JERSEY FACILITY

400 Metuchen Road
 South Plainfield, NJ 07080
 (800) 627-4661
 (908) 757-9000
 (908) 412-1442 FAX

GEORGIA FACILITY

777 Greenbelt Parkway
 Griffin, GA 30223
 (800) 504-8199
 (678) 688-1312
 (678) 688-1379 FAX

INDIANA FACILITY

4245 Railroad Avenue
 East Chicago, IN 46312
 (866) 636-6002
 (219) 378-7100
 (219) 378-7106 FAX

TEXAS FACILITY

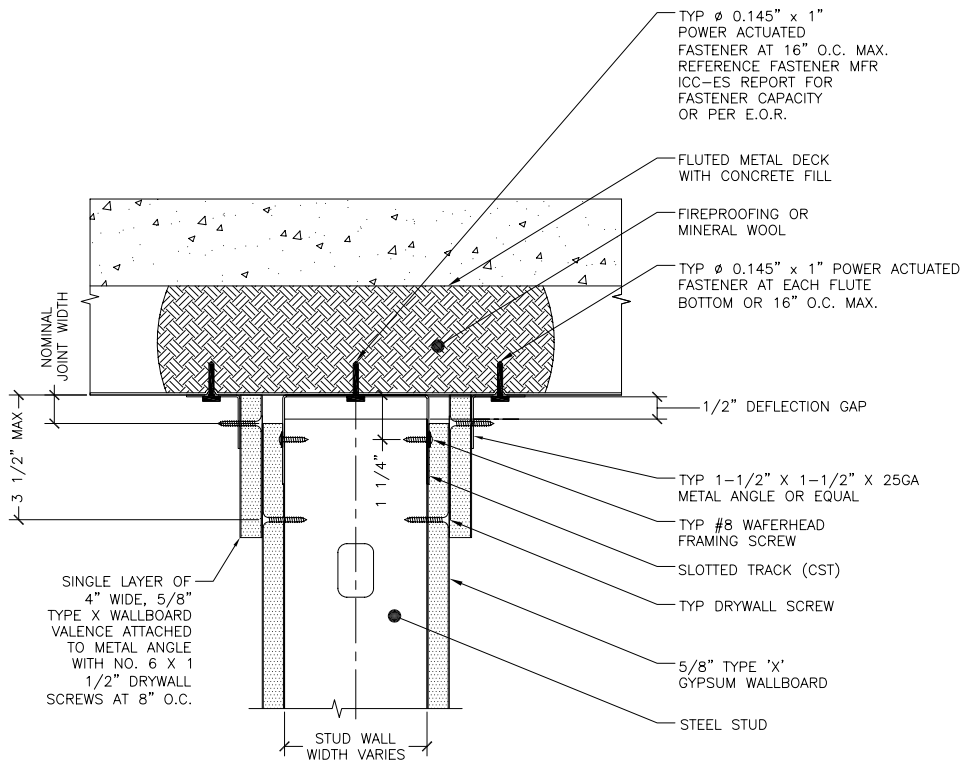
10101 Bay Area Boulevard
 Pasadena, TX 77507
 (866) 852-9510
 (281) 283-8100
 (281) 283-8105 FAX

NEW YORK SALES OFFICE

137 Broadway, Suite B
 Amityville, NY 11701
 (800) 627-4667
 (631) 691-2200
 (631) 691-1492 FAX

ENGINEERING OFFICE

175 Country Club Drive, Suite 200A
 Stockbridge, GA 30281
 (866) 545-1545
 (770) 507-2600
 (770) 507-2605 FAX



- NOTES:**
1. Cyclical Design - UL 2079 Test Standard.
 2. Do not screw drywall to slotted track.
 3. Reference ITS / Warnock Hersey directory for specific information.
 4. Reference UL Fire Resistance Directory for specific information.

HEAD OF WALL SYSTEM 6, PERPENDICULAR TO FLUTE DETAIL
 WITH $\pm 1/2$ INCH ALLOWABLE VERTICAL MOVEMENT
 1 HR. FIRE RESISTIVE ASSEMBLY
 UL-2079 TEST STD.



NEW JERSEY FACILITY
 400 Metuchen Road
 South Plainfield, NJ 07080
 (800) 627-4661
 (908) 757-9000
 (908) 412-1442 FAX

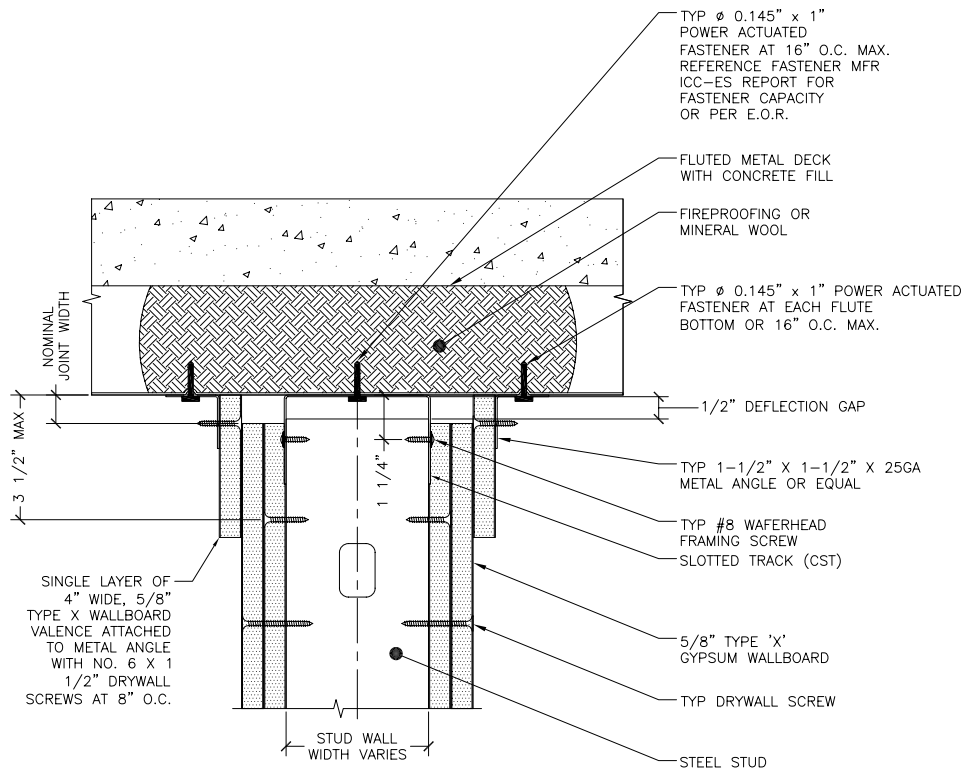
GEORGIA FACILITY
 777 Greenbelt Parkway
 Griffin, GA 30223
 (800) 504-8199
 (678) 688-1312
 (678) 688-1379 FAX

INDIANA FACILITY
 4245 Railroad Avenue
 East Chicago, IN 46312
 (866) 636-6002
 (219) 378-7100
 (219) 378-7106 FAX

TEXAS FACILITY
 10101 Bay Area Boulevard
 Pasadena, TX 77507
 (866) 852-9510
 (281) 283-8100
 (281) 283-8105 FAX

NEW YORK SALES OFFICE
 137 Broadway, Suite B
 Amityville, NY 11701
 (800) 627-4667
 (631) 691-2200
 (631) 691-1492 FAX

ENGINEERING OFFICE
 175 Country Club Drive, Suite 200A
 Stockbridge, GA 30281
 (866) 545-1545
 (770) 507-2600
 (770) 507-2605 FAX



- NOTES:**
1. Cyclical Design - UL 2079 Test Standard.
 2. Do not screw drywall to slotted track.
 3. Reference ITS / Warnock Hersey directory for specific information.
 4. Reference UL Fire Resistance Directory for specific information.

HEAD OF WALL SYSTEM 6, PERPENDICULAR TO FLUTE DETAIL
 WITH $\pm 1/2$ INCH ALLOWABLE VERTICAL MOVEMENT
 2 HR. FIRE RESISTIVE ASSEMBLY
 UL-2079 TEST STD.



NEW JERSEY FACILITY

400 Metuchen Road
 South Plainfield, NJ 07080
 (800) 627-4661
 (908) 757-9000
 (908) 412-1442 FAX

GEORGIA FACILITY

777 Greenbelt Parkway
 Griffin, GA 30223
 (800) 504-8199
 (678) 688-1312
 (678) 688-1379 FAX

INDIANA FACILITY

4245 Railroad Avenue
 East Chicago, IN 46312
 (866) 636-6002
 (219) 378-7100
 (219) 378-7106 FAX

TEXAS FACILITY

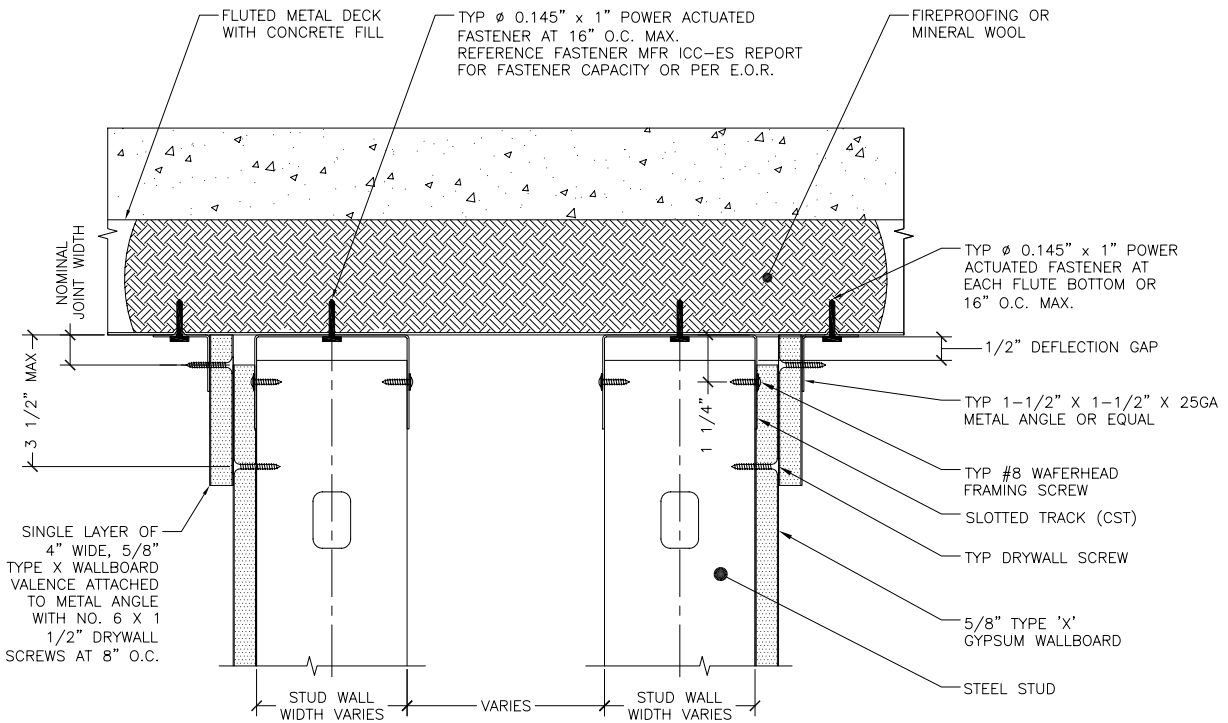
10101 Bay Area Boulevard
 Pasadena, TX 77507
 (866) 852-9510
 (281) 283-8100
 (281) 283-8105 FAX

NEW YORK SALES OFFICE

137 Broadway, Suite B
 Amityville, NY 11701
 (800) 627-4667
 (631) 691-2200
 (631) 691-1492 FAX

ENGINEERING OFFICE

175 Country Club Drive, Suite 200A
 Stockbridge, GA 30281
 (866) 545-1545
 (770) 507-2600
 (770) 507-2605 FAX



NOTES:

1. Cyclical Design - UL 2079 Test Standard.
2. Do not screw drywall to slotted track.
3. Reference ITS / Warnock Hersey directory for specific information.
4. Reference UL Fire Resistance Directory for specific information.

HEAD OF WALL SYSTEM 6, PERPENDICULAR TO FLUTE DETAIL
WITH $\pm 1/2$ INCH ALLOWABLE VERTICAL MOVEMENT
1 HR. FIRE RESISTIVE ASSEMBLY



UL-2079 TEST STD.



NEW JERSEY FACILITY

400 Metuchen Road
South Plainfield, NJ 07080
(800) 627-4661
(908) 757-9000
(908) 412-1442 FAX

GEORGIA FACILITY

777 Greenbelt Parkway
Griffin, GA 30223
(800) 504-8199
(678) 688-1312
(678) 688-1379 FAX

INDIANA FACILITY

4245 Railroad Avenue
East Chicago, IN 46312
(866) 636-6002
(219) 378-7100
(219) 378-7106 FAX

TEXAS FACILITY

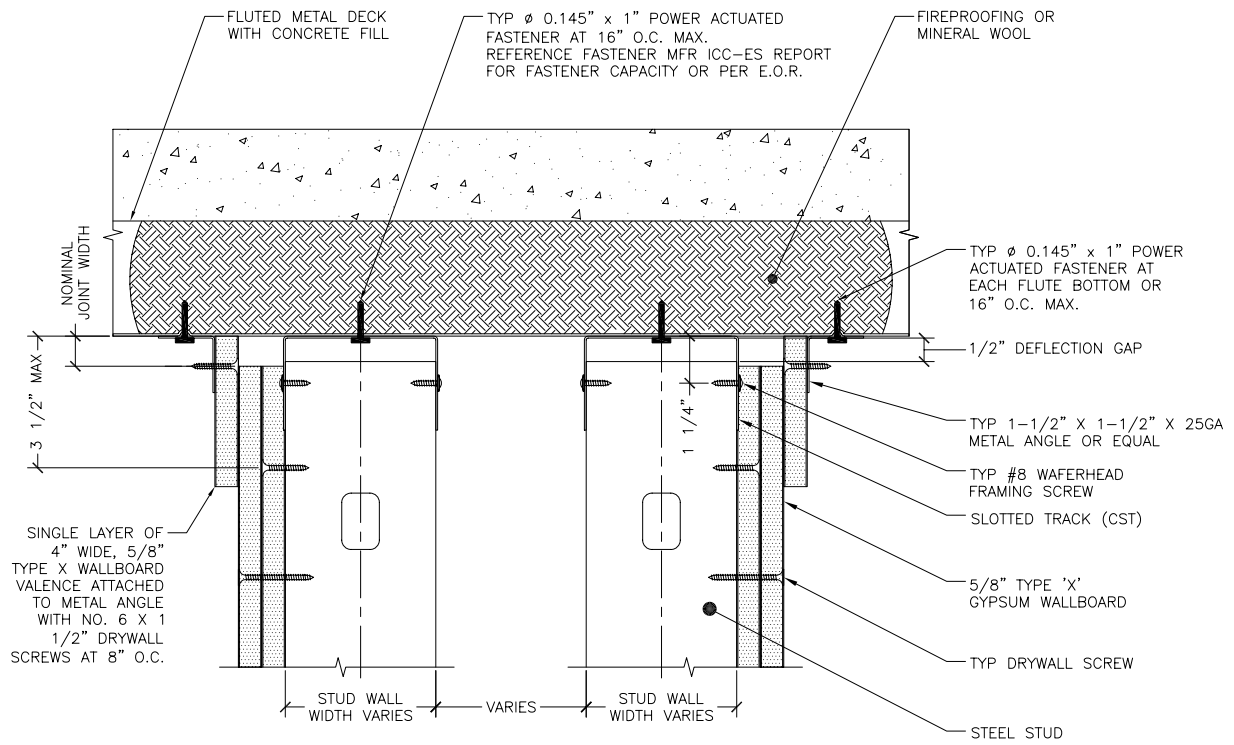
10101 Bay Area Boulevard
Pasadena, TX 77507
(866) 852-9510
(281) 283-8100
(281) 283-8105 FAX

NEW YORK SALES OFFICE

137 Broadway, Suite B
Amityville, NY 11701
(800) 627-4667
(631) 691-2200
(631) 691-1492 FAX

ENGINEERING OFFICE

175 Country Club Drive, Suite 200A
Stockbridge, GA 30281
(866) 545-1545
(770) 507-2600
(770) 507-2605 FAX



- NOTES:**
1. Cyclical Design - UL 2079 Test Standard.
 2. Do not screw drywall to slotted track.
 3. Reference ITS / Warnock Hersey directory for specific information.
 4. Reference UL Fire Resistance Directory for specific information.

HEAD OF WALL SYSTEM 6, PERPENDICULAR TO FLUTE DETAIL
 WITH $\pm 1/2$ INCH ALLOWABLE VERTICAL MOVEMENT
 2 HR. FIRE RESISTIVE ASSEMBLY
 UL-2079 TEST STD.



NEW JERSEY FACILITY
 400 Metuchen Road
 South Plainfield, NJ 07080
 (800) 627-4661
 (908) 757-9000
 (908) 412-1442 FAX

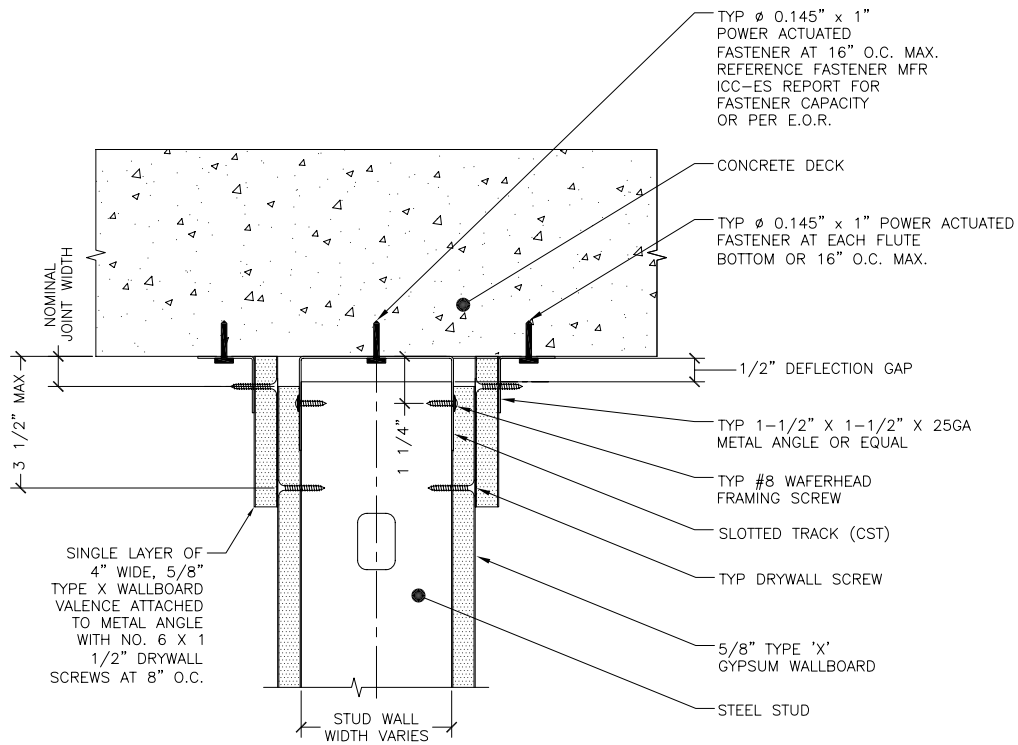
GEORGIA FACILITY
 777 Greenbelt Parkway
 Griffin, GA 30223
 (800) 504-8199
 (678) 688-1312
 (678) 688-1379 FAX

INDIANA FACILITY
 4245 Railroad Avenue
 East Chicago, IN 46312
 (866) 636-6002
 (219) 378-7100
 (219) 378-7106 FAX

TEXAS FACILITY
 10101 Bay Area Boulevard
 Pasadena, TX 77507
 (866) 852-9510
 (281) 283-8100
 (281) 283-8105 FAX

NEW YORK SALES OFFICE
 137 Broadway, Suite B
 Amityville, NY 11701
 (800) 627-4667
 (631) 691-2200
 (631) 691-1492 FAX

ENGINEERING OFFICE
 175 Country Club Drive, Suite 200A
 Stockbridge, GA 30281
 (866) 545-1545
 (770) 507-2600
 (770) 507-2605 FAX



- NOTES:**
1. Cyclical Design - UL 2079 Test Standard.
 2. Do not screw drywall to slotted track.
 3. Reference ITS / Warnock Hersey directory for specific information.
 4. Reference UL Fire Resistance Directory for specific information.

HEAD OF WALL SYSTEM 7, AT CONCRETE DECK
 WITH $\pm 1/2$ INCH ALLOWABLE VERTICAL MOVEMENT
 1 HR. FIRE RESISTIVE ASSEMBLY
 UL-2079 TEST STD.



NEW JERSEY FACILITY

400 Metuchen Road
 South Plainfield, NJ 07080
 (800) 627-4661
 (908) 757-9000
 (908) 412-1442 FAX

GEORGIA FACILITY

777 Greenbelt Parkway
 Griffin, GA 30223
 (800) 504-8199
 (678) 688-1312
 (678) 688-1379 FAX

INDIANA FACILITY

4245 Railroad Avenue
 East Chicago, IN 46312
 (866) 636-6002
 (219) 378-7100
 (219) 378-7106 FAX

TEXAS FACILITY

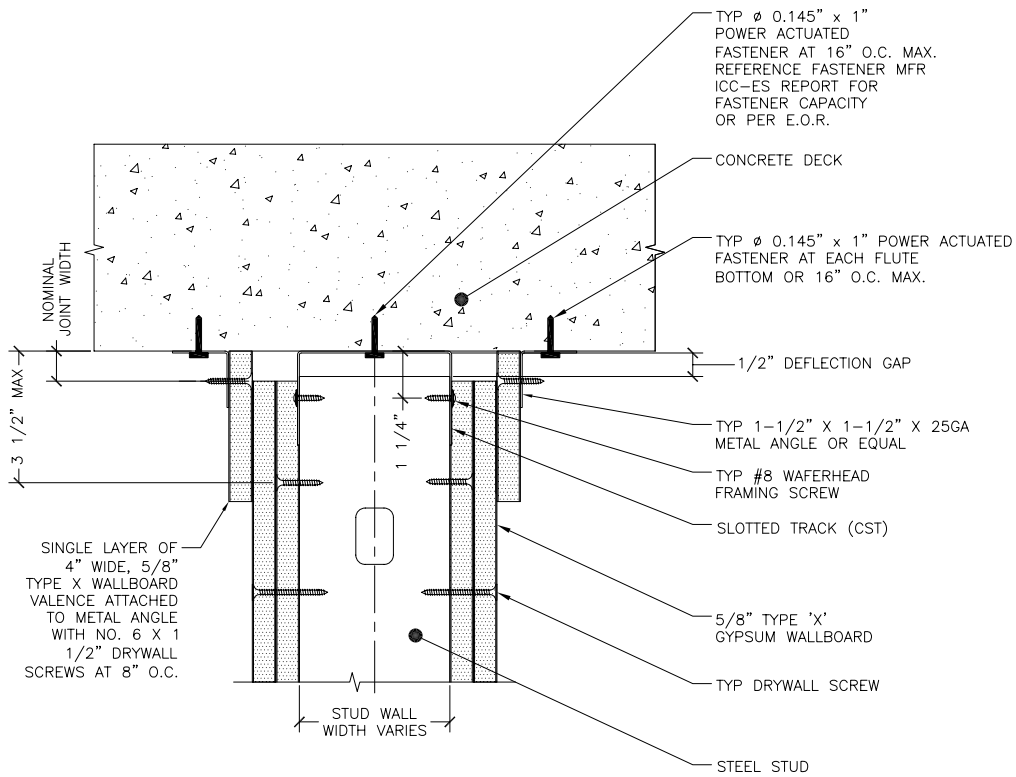
10101 Bay Area Boulevard
 Pasadena, TX 77507
 (866) 852-9510
 (281) 283-8100
 (281) 283-8105 FAX

NEW YORK SALES OFFICE

137 Broadway, Suite B
 Amityville, NY 11701
 (800) 627-4667
 (631) 691-2200
 (631) 691-1492 FAX

ENGINEERING OFFICE

175 Country Club Drive, Suite 200A
 Stockbridge, GA 30281
 (866) 545-1545
 (770) 507-2600
 (770) 507-2605 FAX



- NOTES:**
1. Cyclical Design – UL 2079 Test Standard.
 2. Do not screw drywall to slotted track.
 3. Reference ITS / Warnock Hersey directory for specific information.
 4. Reference UL Fire Resistance Directory for specific information.

HEAD OF WALL SYSTEM 7, AT CONCRETE DECK
 WITH ±1/2 INCH ALLOWABLE VERTICAL MOVEMENT
 2 HR. FIRE RESISTIVE ASSEMBLY
 UL-2079 TEST STD.



NEW JERSEY FACILITY

400 Metuchen Road
 South Plainfield, NJ 07080
 (800) 627-4661
 (908) 757-9000
 (908) 412-1442 FAX

GEORGIA FACILITY

777 Greenbelt Parkway
 Griffin, GA 30223
 (800) 504-8199
 (678) 688-1312
 (678) 688-1379 FAX

INDIANA FACILITY

4245 Railroad Avenue
 East Chicago, IN 46312
 (866) 636-6002
 (219) 378-7100
 (219) 378-7106 FAX

TEXAS FACILITY

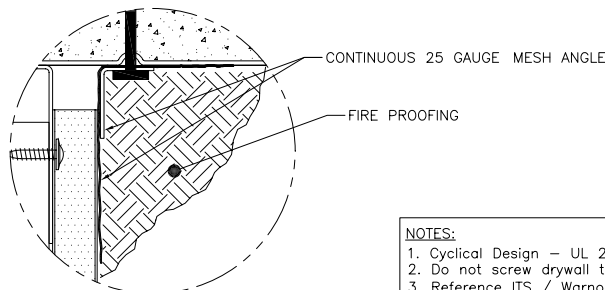
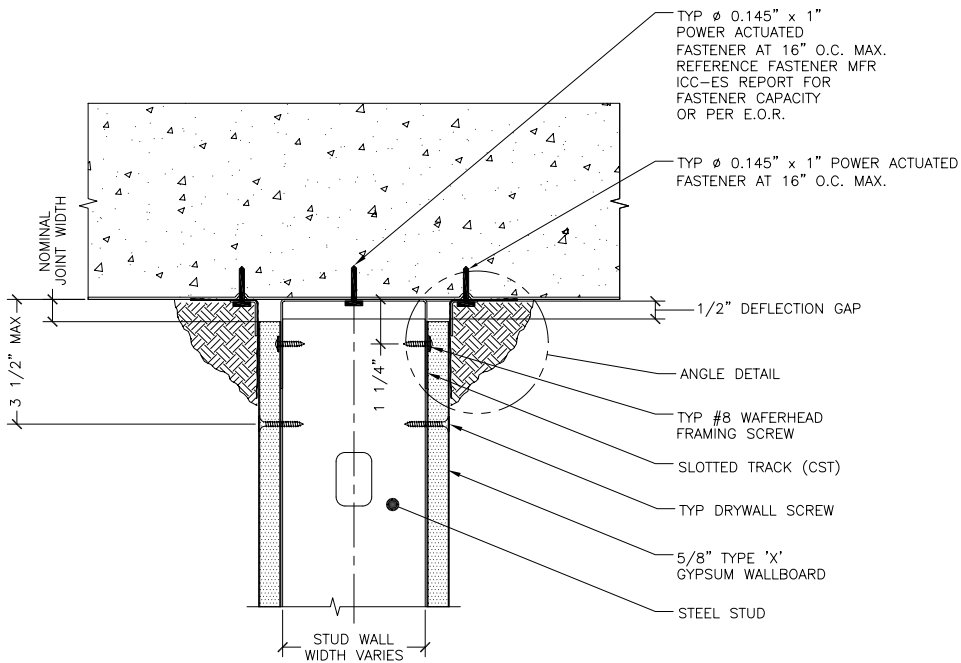
10101 Bay Area Boulevard
 Pasadena, TX 77507
 (866) 852-9510
 (281) 283-8100
 (281) 283-8105 FAX

NEW YORK SALES OFFICE

137 Broadway, Suite B
 Amityville, NY 11701
 (800) 627-4667
 (631) 691-2200
 (631) 691-1492 FAX

ENGINEERING OFFICE

175 Country Club Drive, Suite 200A
 Stockbridge, GA 30281
 (866) 545-1545
 (770) 507-2600
 (770) 507-2605 FAX



ANGLE DETAIL

- NOTES:**
1. Cyclical Design – UL 2079 Test Standard.
 2. Do not screw drywall to slotted track.
 3. Reference ITS / Warnock Hersey directory for specific information.
 4. Reference UL Fire Resistance Directory for specific information.

HEAD OF WALL SYSTEM 8,
 ±1/2 INCH ALLOWABLE VERTICAL MOVEMENT
 1 HR. FIRE RESISTIVE ASSEMBLY
 UL-2079 TEST STD.



NEW JERSEY FACILITY

400 Metuchen Road
 South Plainfield, NJ 07080
 (800) 627-4661
 (908) 757-9000
 (908) 412-1442 FAX

GEORGIA FACILITY

777 Greenbelt Parkway
 Griffin, GA 30223
 (800) 504-8199
 (678) 688-1312
 (678) 688-1379 FAX

INDIANA FACILITY

4245 Railroad Avenue
 East Chicago, IN 46312
 (866) 636-6002
 (219) 378-7100
 (219) 378-7106 FAX

TEXAS FACILITY

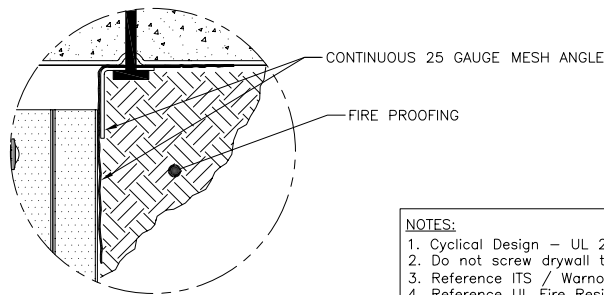
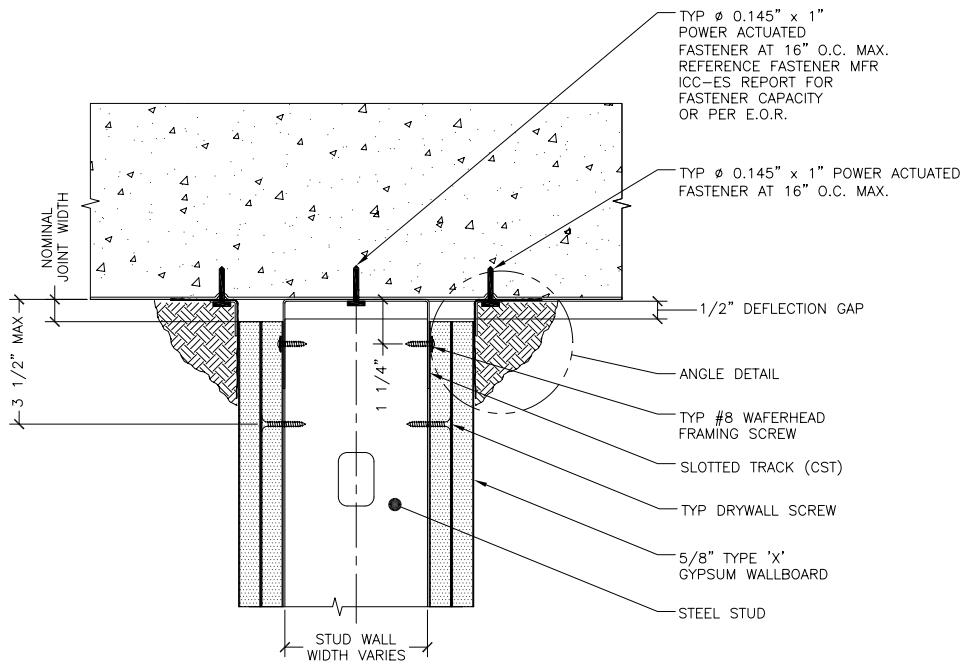
10101 Bay Area Boulevard
 Pasadena, TX 77507
 (866) 852-9510
 (281) 283-8100
 (281) 283-8105 FAX

NEW YORK SALES OFFICE

137 Broadway, Suite B
 Amityville, NY 11701
 (800) 627-4667
 (631) 691-2200
 (631) 691-1492 FAX

ENGINEERING OFFICE

175 Country Club Drive, Suite 200A
 Stockbridge, GA 30281
 (866) 545-1545
 (770) 507-2600
 (770) 507-2605 FAX



ANGLE DETAIL

- NOTES:**
1. Cyclical Design - UL 2079 Test Standard.
 2. Do not screw drywall to slotted track.
 3. Reference ITS / Warnock Hersey directory for specific information.
 4. Reference UL Fire Resistance Directory for specific information.

HEAD OF WALL SYSTEM 8,
 $\pm 1/2$ INCH ALLOWABLE VERTICAL MOVEMENT
 2 HR. FIRE RESISTIVE ASSEMBLY
 UL-2079 TEST STD.



NEW JERSEY FACILITY

400 Metuchen Road
 South Plainfield, NJ 07080
 (800) 627-4661
 (908) 757-9000
 (908) 412-1442 FAX

GEORGIA FACILITY

777 Greenbelt Parkway
 Griffin, GA 30223
 (800) 504-8199
 (678) 688-1312
 (678) 688-1379 FAX

INDIANA FACILITY

4245 Railroad Avenue
 East Chicago, IN 46312
 (866) 636-6002
 (219) 378-7100
 (219) 378-7106 FAX

TEXAS FACILITY

10101 Bay Area Boulevard
 Pasadena, TX 77507
 (866) 852-9510
 (281) 283-8100
 (281) 283-8105 FAX

NEW YORK SALES OFFICE

137 Broadway, Suite B
 Amityville, NY 11701
 (800) 627-4667
 (631) 691-2200
 (631) 691-1492 FAX

ENGINEERING OFFICE

175 Country Club Drive, Suite 200A
 Stockbridge, GA 30281
 (866) 545-1545
 (770) 507-2600
 (770) 507-2605 FAX