

Interior Roller Shades



NYSAN

SOLAR CONTROL

A Hunter Douglas Contract Company



Service. Performance. Innovation.

Nysan solar-control solutions manage light and energy along the windowed wall. An integral part of the building envelope, solar-control systems enhance natural daylighting, reduce glare, and regulate thermal gain to ensure comfort and enhance productivity.

The result: An environment for human sustainability not to mention significant savings in energy use.

No other source can match Nysan's complete range of solutions: from manual and automated roller shades, to light shelves and exterior shading systems, to fully controlled product suites and custom solutions.

See product details and selected projects at www.nysan.com

Cover

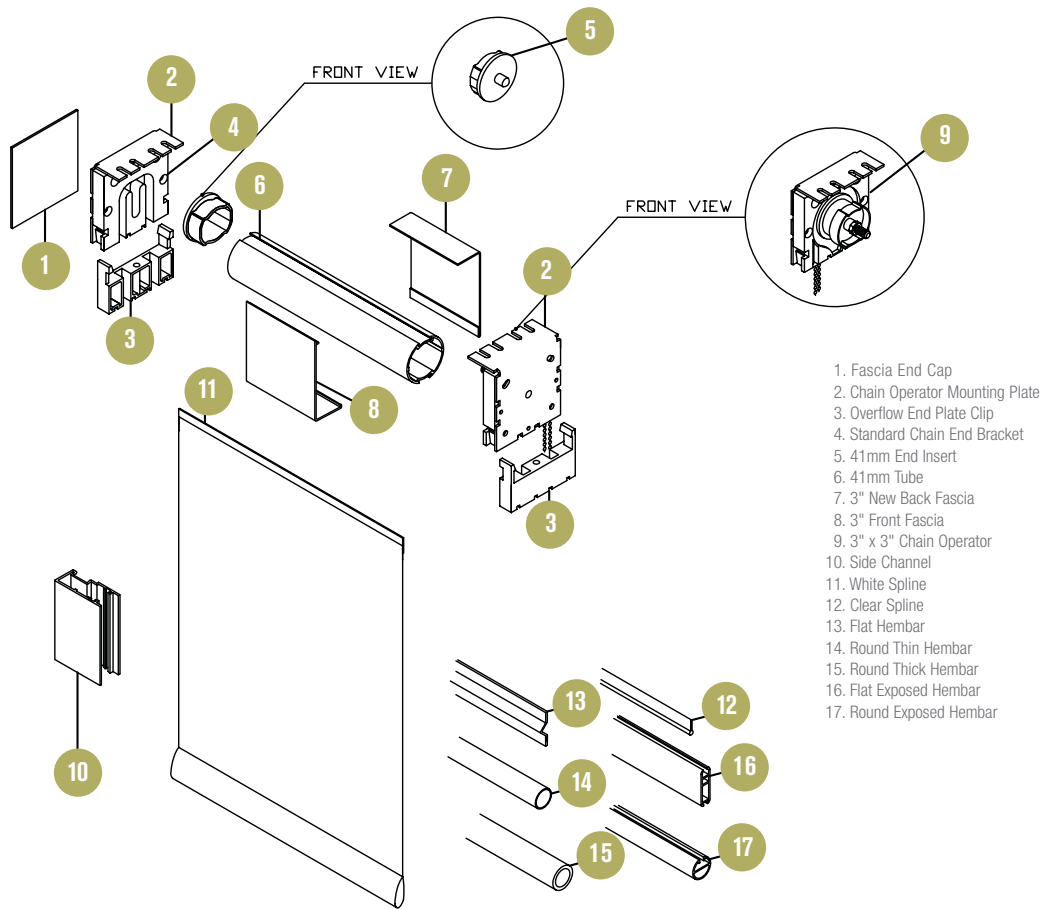
Project: Shaw Communications Inc. Barlow Office
Architect: Cohos Evamy
Dealer: RGO Office Products
Product: Motorized Roller Shades



Shades that Set the Standard.

Nysan roller shades not only manage the light passing into a space, but also help establish its look and feel. From single offices to the largest public areas, Nysan shades will enhance the performance and appearance of any application.

Project: Shaw Communications Inc. Barlow Office
Architect: Cohos Evamy
Dealer: RGO Office Products
Product: Motorized Roller Shades



1. Fascia End Cap
2. Chain Operator Mounting Plate
3. Overflow End Plate Clip
4. Standard Chain End Bracket
5. 41mm End Insert
6. 41mm Tube
7. 3" New Back Fascia
8. 3" Front Fascia
9. 3" x 3" Chain Operator
10. Side Channel
11. White Spline
12. Clear Spline
13. Flat Hembar
14. Round Thin Hembar
15. Round Thick Hembar
16. Flat Exposed Hembar
17. Round Exposed Hembar

Attractive and functional, our shades feature a comprehensive range of fabrics to meet the design and performance specifications of any fenestration scheme. Exclusive patented brackets make them simple to install. Operating mechanisms of uncompromising quality ensure durable, trouble-free operation. Features include:

- A full range of choices for openness, color, and outward visibility, including PVC-free fabrics and dual-color/metallized fabrics for optimal thermal control
- A full range of operating mechanisms to fit any application, from manual chain/crank operated shades to motorized systems that can drive multiple and large shades
- Intelligent sun-tracking and wireless controls integrate with even the most advanced building management systems
- Roller tubes with exclusive anodized aluminum finish to prevent fabric discoloration from oxidation. All tubes engineered to eliminate shade deflection over the length of the shade. Integrated splines secure fabrics and ease replacement if needed
- Easier installation with universal brackets that allow side, top, or end mounting without additional parts. Built-in self-leveling further streamlines installation and adjustment
- Service and Maintenance: Nysan shades are backed with a 10-year Hassle-Free™ warranty

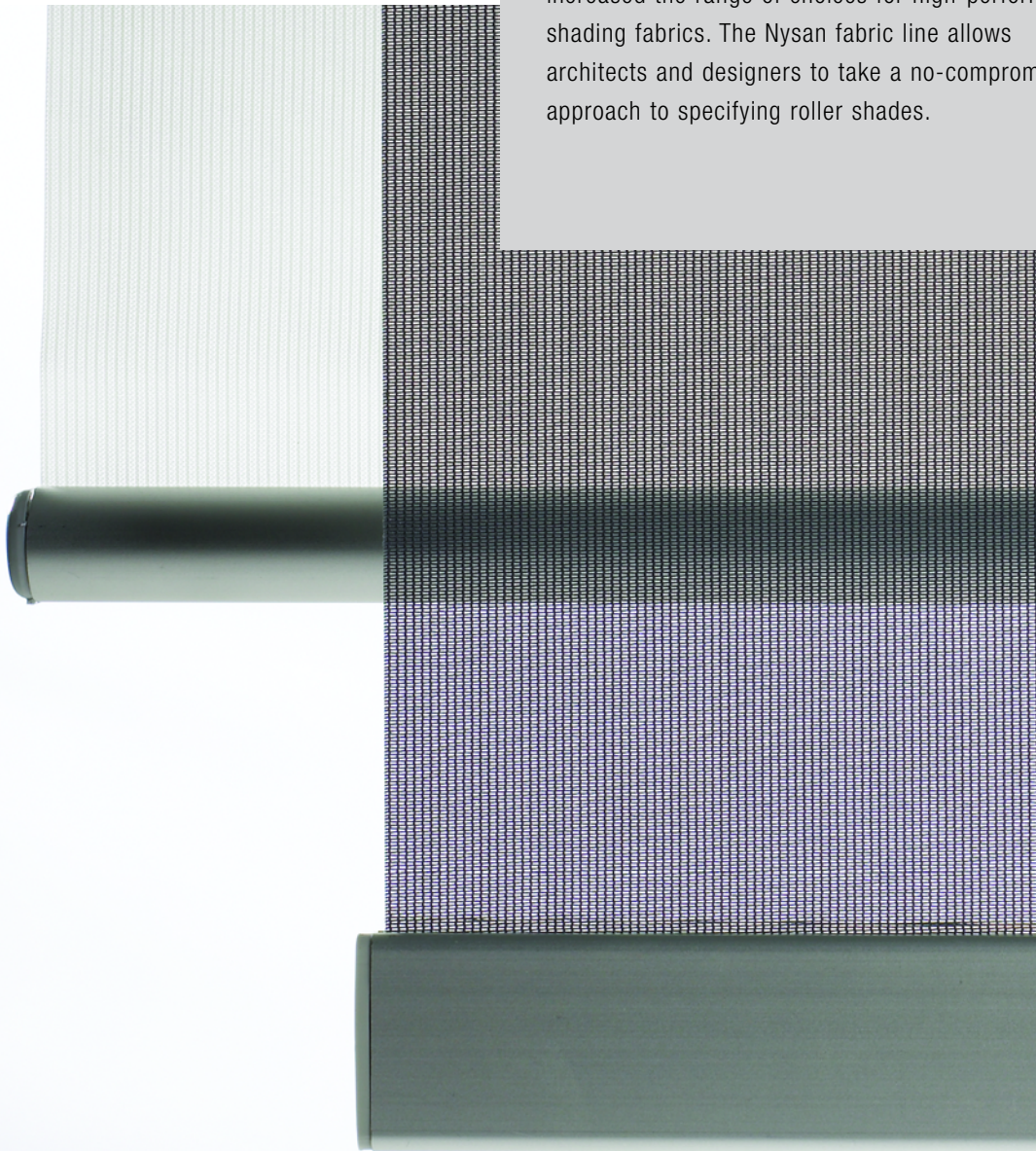
FENESTRATION:

The design and arrangement of openings – particularly windows – in a structure. Fenestration schemes incorporate factors such as daylighting, solar control, glare reduction, and management of thermal gain.

SOLAR SHADE:

Window coverings engineered to control light and glare, as well as heat, with the desired degree of outward visibility. Fabric shades with roller mechanisms have become an industry choice for their versatility and sleek appearance.

Recent advances in textile development have greatly increased the range of choices for high-performance shading fabrics. The Nysan fabric line allows architects and designers to take a no-compromise approach to specifying roller shades.



The Widest Range of High-Performance Fabrics.



Nysan fabrics offer a wide variety of choices, including an exclusive selection of sustainable, PVC-free GreenScreen fabrics.

Key characteristics:

- Outstanding solar properties to control glare and maximize outward visibility
- Sustainable, PVC-free construction that eliminates VOC's and off-gassing
- Flame-retardant certification, meeting standards of NFPA 701, M1, and/or B1
- Dimensional stability to eliminate sagging and pooling problems that can result in “smiling” shades
- Options to manage thermal gain, such as metallized and dual-color fabrics
- Durability and colorfastness to light

With a complete range of aesthetic and performance qualities, there are Nysan fabrics to meet nearly any design and performance requirement. Selections range from PVC-free (GreenScreen) and glass-fiber blackout fabrics that control light completely; to intermediate openesses from 1%, 3%, and 5%; to 10%; to “wide open” 25% open fabrics that are nearly transparent. All offer good color ranges with outstanding durability and dimensional stability.

OPENNESS:

The size/number of holes in a shading fabric that allow light (and views) to pass through the shade. It's expressed as a percentage – typical values are 0% (blackout), 1%, 3%, and 5% (sometimes called brownout), and 10% or more (sheer).

OUTWARD VISIBILITY:

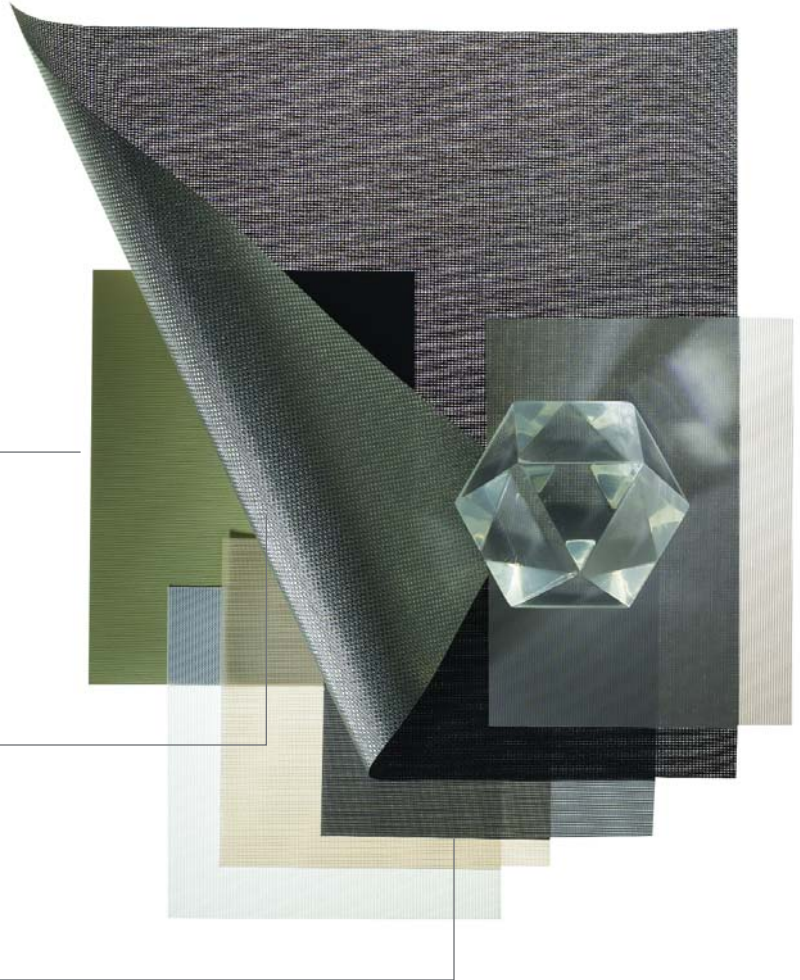
The degree to which a roller shade fabric appears transparent when looking from the interior to the outside. Darker fabrics provide better outward visibility than lighter ones, because they reflect less interior light back toward the occupant. Outward visibility makes evaluating color choices an important aspect of fabric selection.



GreenScreen fabrics are composed of high-tensile polyester and offer more choices for openness and color than any other PVC-free fabric. These environmentally sustainable shading fabrics are also flame-retardant, meeting standards for both North America and Europe.

GreenScreen Platinum fabrics feature an aluminized exterior fabric face that delivers optimal glare control and outward visibility. Fully maintains the FR, dimensional stability, and design choices of the GreenScreen line.

Dual-Color GreenScreen fabrics combine a distinct design aesthetic with very strong properties for managing light and glare. Offers the ability to specify a consistent fabric color to face the exterior without giving up varying color choices for the interior.



Nysan GreenScreen® Collection*

Description	Ts	Rs	As	O-F	S.C
Eco Platinum - Charcoal	7	37	56	2	0.40
Eco Platinum - Pearl	13	38	49	2	0.41
Eco Platinum - Pearl Linen	13	40	47	3	0.40
Balance - Anthracite	24	31	45	6	0.45
Balance - Anthracite Metallic	8	35	57	6	0.41
Balance - White	45	47	8	7	0.42
Eco - Charcoal	35	26	39	8	0.48
Eco - Pearl	50	36	14	9	0.47
Eco - Pearl Linen	51	38	11	9	0.46

Ts - Solar Transmission. The ratio of the total solar energy passing through the material.

Rs - Solar Reflectance. The ratio of the total solar energy reflecting off the material.

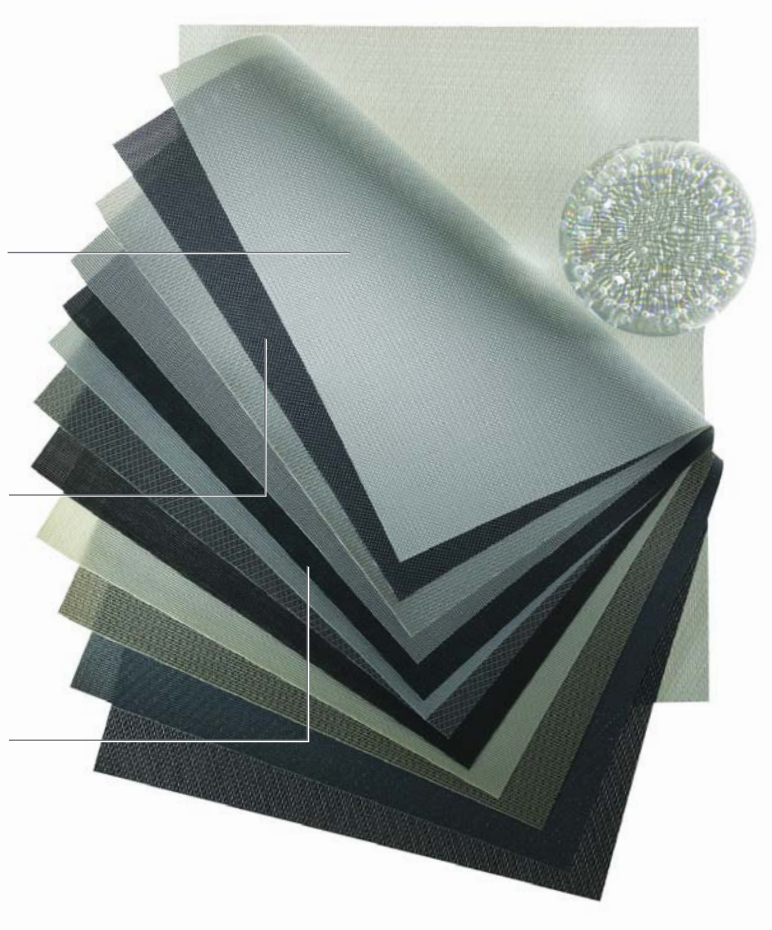
As - Solar Absorption. The ratio of the total solar energy absorbed by the material.

*Numerous additional fabric choices and colors available, please contact Nysan for more information

SuperScreen: Composed of flame-resistant PVC-coated fiberglass yarns, these fabrics feature a one-over, two under weave to produce a subtle striation. Stable and durable, they are engineered to hang flat and perform well for the life of the shade. SuperScreen fabrics come in a variety of colors and several openness levels.

SuperWeave: The basket weave of these fabrics offers an appearance of quiet strength. Durable PVC-coated fiberglass yarns assure they perform as well as they look, with stability and flame-resistance. SuperWeave fabrics come in a variety of colors and openness levels.

SuperTwill: The twill weave of these fabrics offers an appearance of quiet strength. Durable PVC-coated fiberglass yarns assure they perform as well as they look, with stability and flame-resistance. SuperTwill fabrics come in a variety of colors and openness levels.



Screen Fabric Collection*

O-F - Openness Factor. The measure of the total open space in the woven fabric. Measured as UV passage through the material.

S.C. - Shading Coefficient. The total energy passing through the assembly, tested with 1/4" heat absorbing glass.

For more information and complete specification details on the Nysan fabric collection, please visit www.nysan.com

Description	Ts	Rs	As	O-F	S.C
SuperWeave 500 - White Pearl	12	47	41	6	0.38
SuperWeave 500 - Pearl Linen	10	41	49	6	0.40
SuperWeave 500 - Charcoal Bronze	7	7	86	6	0.50
SuperScreen 300 - White Stone	19	56	25	3	0.36
SuperScreen 300 - Pearl Linen	10	43	47	3	0.39
SuperScreen 300 - Charcoal Pewter	4	9	87	3	0.49
SuperTwill 300 - White Linen Pearl	9	53	32	3	0.34
SuperTwill 300 - Pearl Bronze Charcoal	3	25	67	3	0.45
SuperTwill 300 - Charcoal Linen Pearl	4	24	68	3	0.43

*Numerous additional fabric choices and colors available, please contact Nysan for more information

Two for One.

Nysan dual systems allow seamless installation of both blackout and light-filtering shades at any window. Designed for A/V, conference and other high-end spaces, both manual and motorized options are available.

Above:

Project: Calgary Convention Center, Calgary, Alberta CA
Architect: Graham Edmunds
Dealer: RGO Office Products
Product: Motorized Shades, Screens and Blackouts

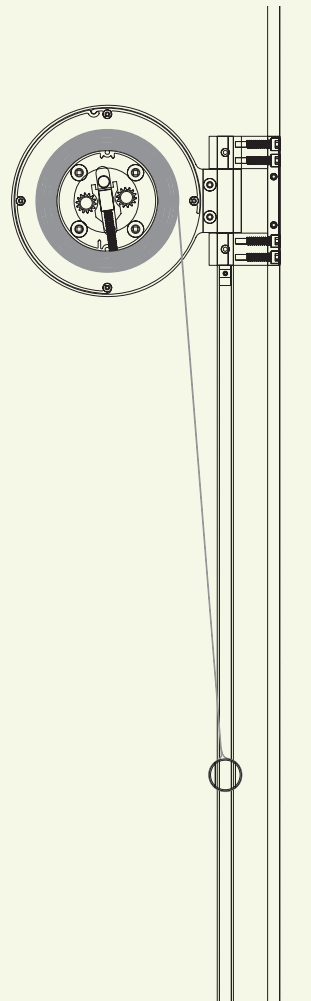


No Limits.



Our customizable hardware systems go well beyond traditional roller shades. Pushing the limits of design allows architects and designers the ability to put their own stamp on projects. Meeting these expectations means Nysan engineers working one on one to provide solutions which push the ordinary to extraordinary. Custom and one-of-a-kind solutions are the hallmark of our business, contact Nysan today to learn more.

CUSTOM TENSION SYSTEM



Above: KBC Bank, Leuven, Belgium
 Architect: Michel Jaspers (building); AR-TE (shading)
 Product: Custom Skylight Systems



Holistic Approach.

*Below: Alley 24, Seattle, WA
Architect: NBBJ
Dealer: Pacific Shades
Product: External Louvered Blinds*



*Below: Peabody Essex Maritime Museum, Salem, MA
Architect: Moshe Safdie and Associates
Dealer: Baystate
Product: Sail Shades*



SELECTED PROJECTS

Skirball Cultural Center, Los Angeles, CA
Architect: Moshe Safdie

Museum of Modern Art, New York, NY
Architect: Yoshio Tanaguchi and KPF

Financial Trading Center, Charlotte, NC
Architect: Skidmore Owings & Merrill LLP (SOM)

Vancouver Public Library, Vancouver, BC
Architect: Moshe Safdie; Downs/Archambault Part.

World Trade Center, Seattle, WA

Fluor Headquarters, Calgary, AL
Architect: Riddel Kurczaba

Wind NRG Partners, LLC, Hinesburg, VT
Architect: William Maclay Architects & Planners

MIT Stata Center, Cambridge, MA
Architect: Frank Gehry

Muhammad Ali Center, Louisville, KY
Architect: Beyer Blinder Belle

University of Michigan Bio Science
Research Building,
Ann Arbor, MI
Architect: Polshek Partnership

Nelson Atkins Museum of Art, Kansas City, MO
Architect: Steven Holl

Lambeau Stadium, Green Bay, WI

Citi National Plaza, Los Angeles, CA

California Academy of Sciences, San Francisco, CA
Architect: Renzo Piano Building Workshop

Art Institute of Chicago, Chicago, IL
Architect: Renzo Piano Building Workshop

Below: Museum of Modern Art, New York, NY
Architect: Yoshio Tanaguchi and KPF
Dealer: LVC Interiors
Product: Skylight Shades and Sun Shades



Below: Biodesign Institute at ASU, Tempe, AZ
Architect: Gould Evans and Lord, Aeck & Sargent Architecture
Dealer: HCI Resources
Product: Custom Wood Louver System



Learn More

For the last 80 years, we've been fortunate enough to help turn countless innovative sketches into innovative buildings. Architects and designers from around the world have taken advantage of Hunter Douglas' unmatched project development, service and support. Chances are, you've seen more of Hunter Douglas than you think. Just look around. With major operation centers in North America, Europe, Latin America, Asia and Australia, we've contributed to thousands of high-profile installations, from retail and commercial facilities to major transit centers and government buildings. Not only are the world's architects and designers our partners, they're our inspiration. As they continue to raise the bar for excellence, we're creating projects to bring their visions to life.

- Call 800.727.8953, option 3 to speak with a specialist
- Visit www.nysan.com

HunterDouglasContract

WINDOW COVERINGS

CEILINGS

SOLAR CONTROL



Nysan Solar Control Systems
#1-115 28th Street SE
Calgary, AB
Canada
T2A 5K4
phone: 403.204.8675
fax: 403.204.8676
www.nysan.com