

# Moduflex®

10650/PAN  
BuyLine 7239



**Panelfold®**  
1953-2003

## Steel and General Purpose Operable Walls

# Moduflex® Series 800 Steel Operable Walls

**Moduflex Series 800** high performance operable walls have 4" (100mm) thick steel panel faces welded to steel frames in a unique unibody construction.

- Sound loss ratings to STC 55
- Sound absorption to NRC .90
- Optional U.L.® 1 Hour fire rating
- Sheer Look® panel edges
- Heights to 44' (13411 mm)

## ACOUSTICAL PERFORMANCE

**Moduflex Series 800** operable walls have attained stringent independent laboratory acoustical ratings of STC 47 to STC 55. An optional noise reduction coefficient of NRC .90 is available using steel perforated faces. Panels have vertical and horizontal acoustical seals placed in a double row labyrinth for optimum performance.

## NON-COMBUSTIBLE SEAMLESS STEEL CONSTRUCTION

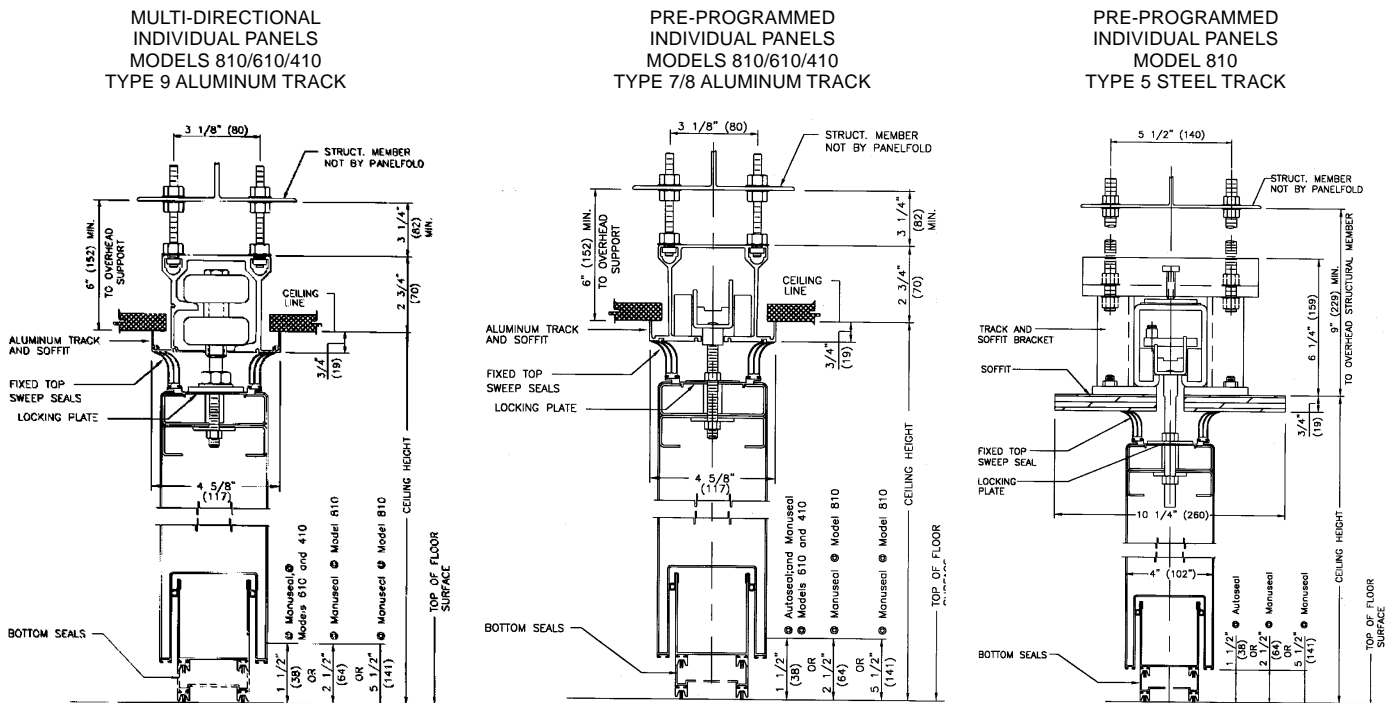
Rugged one-piece 14-gauge steel frames are permanently and invisibly welded to one-piece seamless steel faces regardless of panel width or height. Bronze finish deep-nesting, interlocking vertical panel edges and horizontal operable seals are made of steel for extra impact strength and fire resistance.

## FULL RANGE FEATURES

A full range of options, including expanding panels, single and double pass-doors, self-illuminated exit signs, and chalk and marker surfaces may be specified. These elegantly styled operable walls out perform most permanent walls.

## TYPICAL VERTICAL SECTION - HEAD DETAILS FOR MODUFLEX® WALLS

For complete details, see Product Briefs, Interactive CD-ROM or Panelfold website at [www.panelfold.com](http://www.panelfold.com)



All Dimensions Shown in Parentheses are Millimeters

## BOTTOM SEALS

Clearance type seal in retracted position.



Seal lowered to floor. Models with 1 1/2" (38mm), 2 1/2" (64mm), and 5 1/2" (141mm) clearance are available. Automatically actuated seals have 1 1/2" (38mm)

# Moduflex® Series 600 and Series 400 General Purpose Operable Walls

10650/PAN  
BuyLine 7239

**Moduflex Series 600** and **400** operable walls for general purpose applications have high density panel faces laminated to metal frames providing strength, mass and stability.

- **Sound loss ratings to STC 50**
- **Class “A” flame spread rating**
- **Full height pin tackable panels**
- **Sheer Look® panel edges**

## ACOUSTICAL PERFORMANCE

Both **Moduflex Series 600** and **Moduflex Series 400** operable walls have attained stringent independent laboratory acoustical ratings to STC 50. Panels have vertical and horizontal acoustical seals placed in a double row labyrinth for optimum performance.

## OPERATING EASE

Regardless of height, **Series 800**, **Series 600**, and **Series 400** panels roll conveniently along their overhead tracks with ease and minimum setup time. A family of smooth rolling track and carrier systems that satisfy every multiple panel use and remote storage requirement provide for “user-friendly” panel operation.

## FULL RANGE FEATURES

A full range of standard options include expanding panels, single and double pass-doors, self-illuminated exit signs, and chalk and marker surfaces and a wide range of surfacing materials. Special features include custom color matching panel edges, windows, custom millwork and curved layouts.



## GUIDE SPECIFICATIONS FOR MODUFLEX® OPERABLE WALLS

### PART 2. PRODUCTS

**2.1 OPERABLE WALLS** shall be manufactured by Panelfold, Inc., Miami, Florida, U.S.A. and installed by an authorized representative of the manufacturer in openings prepared by others to Moduflex® Series (specify: 800; 600; or 400) requirements.

**2.2 OPERATION** shall consist of a series of manually or electrically operated flat panels, top supported. Top and bottom seals shall be as specified in paragraph 2.8.

**2.3 PANEL CONFIGURATION** shall be as indicated on the plans.

#### 2.4 PANELS:

**2.4.1 SERIES 800** shall be 4" (102mm) thick and nominally 49" (1245mm) wide, one piece, all steel construction. Continuous steel panel faces shall be invisibly welded to minimum 14 gauge (1.90mm) one-piece steel frames. Horizontal or vertical spliced frames or faces shall not be permitted. Interlocking vertical panel edges shall be made of steel.

**2.4.2 MODEL 840GWE** shall be 3" (76mm) thick and nominally 49" (1245mm) wide, one piece, all steel construction with light-weight, impact resistant honeycomb core. Continuous steel panel faces shall be invisibly welded to minimum 16 gauge (1.62mm) one-piece steel frames. Horizontal or vertical spliced frames or faces shall not be permitted. Interlocking vertical panel edges shall be made of steel.

**2.4.3 SERIES 600** shall be 4" (102mm) thick, **SERIES 400** 3" (76mm) thick and nominally 49" (1245mm) wide. Panel faces shall be laminated to metal frames. Panels shall have appropriate internal insulation to achieve specified STC. The tops of the panels shall be reinforced to support suspension components.

**2.4.4 VERTICAL EDGES** of the panels shall not require trim thus minimizing the appearance of the vertical joining of the Sheer-Look® panels.

**2.5 PANELS** shall be factory surfaced as specified.

**2.6 HANGING WEIGHT** of panels shall not exceed 12 lbs./ft<sup>2</sup> (58.6Kg/m<sup>2</sup>).

**2.7 ACOUSTICAL RATING** of panels as tested by an independent acoustical laboratory in accordance with ASTM E90-85 test procedures in a full scale 14'0" (4267mm) by 9'3" (2819mm) opening shall be (specify: STC 55; STC 52; STC 50; STC 49; STC 47; STC 44; or STC 33). Optional N.R.C. .90, (Series 800 only) STC 50 panels shall be supplied where indicated on the plans.

**2.8 SOUND SEALS** shall be as specified.

**2.9 PANELS** shall be hinged with manufacturer's standard butt-type hinges.

**2.10 POCKET DOORS** where indicated on the plans shall be manufactured of the same materials as the panels. Hinges shall be standard butt-type.

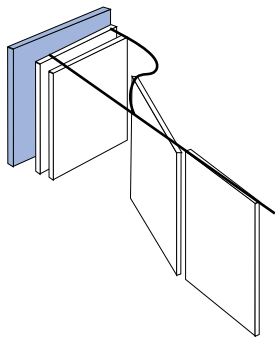
**2.11 OPTIONAL U.L.® ONE HOUR** fire rated **SERIES 800 FIRECOUSTIC®** models, walls shall be supplied where indicated on the plans.

#### 2.12 OPTIONS SPECIFICATIONS

**2.12.1 PASS DOORS** where indicated shall be manufactured of the same materials, thickness and acoustical rating as the panels. Double doors and A.D.A. compliant doors shall have friction roller latches.

**2.12.2 TACKBOARDS, CHALKBOARDS, MARKERBOARDS** where indicated shall be nominally [specify 48" (1219mm) high; or full panel height. Color to be selected from manufacturer's standards and bronze trimmed.

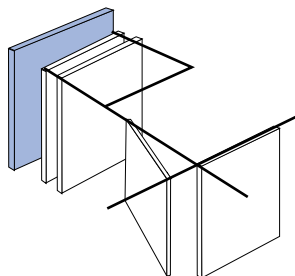
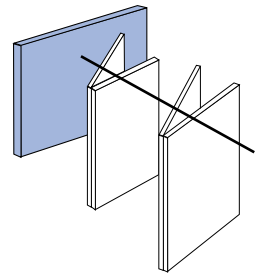
## TYPES OF APPLICATIONS



**MODEL 810PP/610PP/410PP**  
Pre-Programmed™ Individual panels, each top supported with two trucks of four radial type, steel ball bearing wheel assemblies are the easiest of all panel systems to manually operate. Panels may be moved one at a time to and from side, angle or remote storage areas. Panels are pre-programmed to roll effortlessly through track diverters to create multiple use room layouts. Available in heights to 44 feet (13411 mm).

#### MODEL 820/620/420

Panels hinged in groups of two, each top supported by a truck of four radial type, steel ball-bearing wheels may be conveniently manually operated and "center" stacked along a single overhead track. Available in heights to 16 feet (4876 mm).



**MODEL 810MD/610MD/410MD**  
Multi-Directional individual panels, each supported with two dual horizontal rotating ball bearing wheeled carrier assemblies, easily negotiate 90° 2, 3 and 4-way intersections. Each panel can be turned in any direction, anywhere along the track grid. Available in heights to 16 feet (4876 mm).

#### MODEL 840/640 AND 840 GWE (Electric)

Panels continuously hinged together are top supported trucks of four radial type, steel ball-bearing wheels. Electric chain driven models with optional SafetyFlex™ infrared system make extremely large openings quick and easy to close and open. Available in heights to 26 feet (4925 mm).

