

Super Hoods...The Hood Every Firefighter Will Want to Wear.

Just as Super Gloves have swept the market, we are certain that these new Super hoods will dominate the hood market.



Comfort Top (patented) or Ventilated (patented) hood designs move the seam circle inside the diameter of the helmet headbank for no rub comfort.

Thanks to these patented designs, there is also no "Gumby like" puckered top seam.



Why? Patented and Proprietary Advantages for the Firefighter!

We incorporated our most popular hood styling features in these designs:



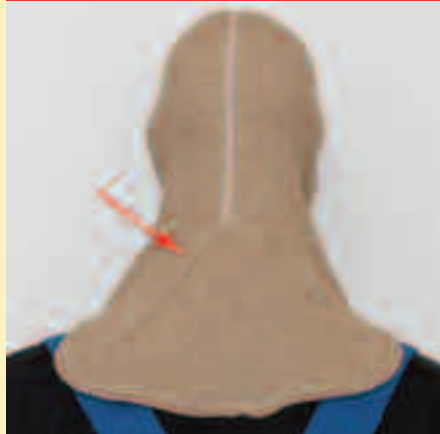
Thanks to these patented designs, there is also, for the first time, hood twoway stretch (the top stretches in opposing direction to stretch in tube of hood) for unprecedented conformity to the head and neck without pull or uncomfortable puckers. The difference in fit and feel is truly amazing.



Notched shoulders to prevent roll under your turnout coat



Natural Face, Natural Fit, opening design couples heavy-duty elastic with a unique gathering pattern, allowing over 17.5" of stretch with an instantaneous opening memory and low bind, high comfort fit.



Proprietary, Patent Pending Lay Flat Back

We have automated the production line on these high volume products, so we are able to offer these extra comfort products at the SAME or lower price of less protective products.

These high volume hoods will be the first priority for in-stock status at our warehouse, ensuring quick delivery:

Model: 300-0422FNF
Outer Layer: Nomex® Lenzing – White
TPP before/after wash...26.4/33.9

Model: 300V0422FNF
Outer Layer: Nomex® Lenzing – White
TPP before/after wash...26.4/33.9

Model: 300-0482FNF-V
Outer Layer: P-84®/PFR Rayon Blend – Navy
TPP before/after wash...23.5/24.9

Model: 300V0482FNF-V
Outer Layer: P-84®/PFR Rayon Blend – Navy
TPP before/after wash...23.5/24.9

Model: 300-0452FNF
Outer Layer: Pbi™ Blend – Bronze
TPP before/after wash...24.4/32.9

Model: 300V0452FNF
Outer Layer: Pbi™ Blend – Bronze
TPP before/after wash...24.4/32.9

Note: Due to the increasing popularity of darker fire fighting hoods, we are stocking Navy P-84® Super Hoods for immediate delivery. Super Hoods are also available in Yellow P-84® (Natural) on a made-to-order basis (NOT STOCKED).

Model: 300-0482FNF-N
Outer Layer: P-84®/PFR Rayon Blend – Yellow (Natural)
TPP before/after wash...23.5/24.9

Model: 300V0482FNF-N
Outer Layer: P-84®/PFR Rayon Blend – Yellow (Natural)
TPP before/after wash...23.5/24.9



All Super Hoods, regardless of outer shell material, feature super comfortable Nomex® Lenzing for exceptional moisture management and comfortable fit against the skin.

Hood Design Advantages Continues...

Hood Design Advantages Continued...

Ventilated Hoods (Patented)

The Ventilating Hood Feature Offers Significant Stress Reduction – By a huge margin, heat stress-related deaths are the leading cause of firefighter fatalities. Further, by the square inch, the crown of the head is the body's most efficient site for dissipating body heat. Therefore, the same insulation a traditional hood uses to protect the face and neck will also trap heat at the crown of the head that is already protected by your helmet. By sewing in a Pbi™ mesh ventilating panel in the crown area to allow maximum heat release, the difference in improved fire-ground comfort and reduction in stress is truly amazing. As one



Ventilating Hoods

part of an overall design goal of minimizing stress, the ventilating hood is an important new weapon in that battle. We strongly encourage you to try one NOW to see the difference for yourself. Contact our Customer Service Department for field test details.

Note: In the 2007 Edition of NFPA 1971, hoods are required to cover the top of the head where the helmet is positioned. However, our vented hood design is still permitted because the areas requiring thermal protective performance (TPP) include the sides and neck only.

Targeted Heat-Guard Hood – Extra Insulation Just Where You Need it...

NEW Patented targeted Heat-Guard insulation front where the helmet ear covers do not contribute to insulation and MOST head burns occur. The need for extra insulation around the facemask outside the ear cover has been addressed in the 2007 edition NFPA 1971

Standard requirements of beefed up helmet ear cover insulation of 20 TPP, when hoods alone are only required to have 20 TPP. The patented exterior Eagle HTC™ Carbon Blend Black/interior Nomex® fleece Heat-Guard on our new Ventilated Eagle™ full drape –



Hood Turned inside out – Nomex® Fleece Backing the Eagle HTC™ Carbon Blend Visible

and new non-ventilated full drape – hood elevates the hood's total performance outside the ear covers dramatically (almost equal to the required 20 TPP hood and 20 TPP helmet ear covers) with minimal extra cost and weight (the 2 layers of Nomex® have a TPP of 22.1 before washing and a TPP of 26.7 after washing). Insulation where you need it, and only where you need the extra protection.

Comfort Top Hood Design

Patented and Patent Pending – We have completed design work on a new Comfort Top Hood design that will be standard on all American Firewear hoods, on a running change basis as existing stock is depleted.

The advantages of the Comfort Top styling

1. The Comfort Top knit stretches in the opposite direction of the hood body so you have balanced multi-stretch fit. The difference is very noticeable and very positive.
2. The peaked look of some hoods along the top stitch line is gone; that middle ridge often rubs when a helmet is worn, the circle stitch on the new Comfort Top avoids "rub areas." The Comfort Top hood pulls evenly around the circular Comfort Top seam with no

rubbing when wearing a helmet.

3. We can run vented and non-vented product on the same line and in the same cuts (the center is either mesh or knit material); this translates into efficiencies for better deliveries and future pricing controls on both styles. Non-Comfort Top styling will still be available, but on a made-to-order basis only.



Hood-to-Coat Attachment Tabs Option

In the old days when single layer drapes on hoods met NFPA requirements, many firefighters would snap the rear drape between the coat



collar facing and the liner. In this way it was always with them and always ready for use. Now that hood drapes must be double layered, they are too bulky to make this possible. Our Hood-to-Coat Attachment Tabs allow the Nomex® tabs to serve the same function when looped between the collar facing to liner snaps. This is an option that can be ordered on any hood product.

Rear Gussets

The Flared Eagle™ and Flatlock Eagle™ hoods utilize rear gussets to allow additional comfort at the shoulders while preserving a snug fit in the head section.



Flatlock Seaming

Most of American Firewear's knit hoods feature a true flatlock, which allows the helmet to rest firmly on the head and prevents the seam from "digging in." Many competitors use a faux flatlock which looks flat, but can still be felt.

Head and Bib Sections

Different styling creates different stitching patterns and locations within the hoods. Some styles, such as the Supreme Eagle™, the Ultimate Eagle™ and the Oversize Eagle™, have separate bib sections sewn to the head sections. In others, such as the Economy, Flared and Flatlock Eagle™, the bibs are simply extensions of the head. Most American Firewear hood styles include bib designs which reduce or prevent the bibs from riding up and/or bunching at the neck.

Hidden Seam Stitching

Some American Firewear hoods feature hidden seam stitching. This is accomplished by stitching the seam and then reversing the fabric layers, encapsulating the stitching between two layers of material. This removes the stitching from exposure to abrasion, heat, and UV.



Heavy Duty Face Opening Elastic

The face opening of the Super Hoods, Supreme Eagle™, the Oversize Eagle™ and the Eagle HTC™ Carbon blend hood styles incorporates our heavy-duty Flatlock



Face Openings Feature Heavy Duty Elastic Flatlock

Natural Face (FNF) or "Natural Fit" design. This popular design couples heavy-duty elastic with a unique gathering pattern, allowing over 17½" of stretch with an instantaneous snap-back and incredible comfort.

Double Stitched and Reinforced Bindings

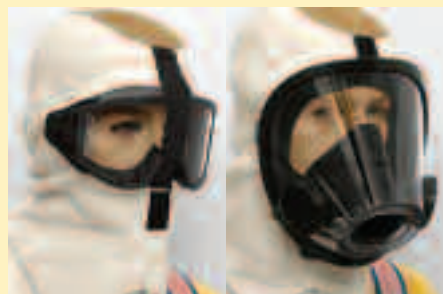
All American Firewear hoods feature bindings at the face or hem that are double stitched and reinforced for the highest durability.



Double-stitched and Bar Tacked Bindings

Tactical Goggle/SCBA Facepiece Hood Option

(Patent Pending)



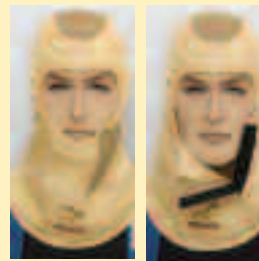
In response to market requests, both from police and fire, we are introducing an adaptable P-84®/PFR Navy Rayon hood. The design allows perfect interface with either goggles or a traditional SCBA facepiece mask.



Hood Shown Using White Material for Demonstration. Actual Hood is Constructed with P-84®/PFR Navy Rayon

EZ Don/Doff Hood Option

(Patent Pending) – NFPA 1971 specifies hood face opening dimensions in an attempt to prevent gap issues between the hood and the facemask. However, some individuals have difficulty donning a hood with this finished opening since there is insufficient stretch to accommodate the larger head areas. To make donning easier (for ALL individuals), we have created a hook and loop flap EZ Don/Doff hood option. This is a hood custom option and can be ordered on any American Firewear hood product.



Vented hoods feature Pbi™ Matrix EZ Don/Doff opening since the ventilating Mesh is Pbi™ (makes for a nice appearance)



Non-vented hoods feature a Black EZ Don/Doff opening (more economical on an economical product)

Hood Design Advantages Continues...

Heat-Guard Hood

Patented targeted Heat-Guard insulation front where the helmet ear covers do not contribute to insulation and MOST head burns occur. The patented exterior



Eagle HTC™ Carbon Blend Black/interior Nomex® fleece Heat-Guard elevates the hood's total performance outside the ear covers dramatically with minimal extra cost and weight (the 2 layers of Nomex® have a TPP of 25.9). Insulation where you need it, and only where you need the extra protection.

Supreme Eagle™

American Firewear's Supreme Eagle™ offers a Comfort Top and special face opening in a larger hood. This hood provides full shoulder-to-shoulder

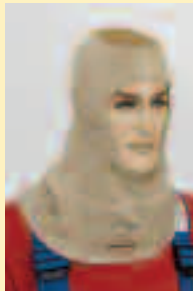


coverage on both front and back, and provides complete protection while ensuring that the hood stays tucked into the turnout coat. Its oversized head section with true flat topseam allows the helmet to rest firmly on the head and prevents the topseam from "digging in." Its "Natural Fit" face opening stretches to over 17" and provides superior fit and comfort. Our Supreme Eagle™ is available in Eagle HTC™ Carbon blend material, Nomex®, Pbi™, P84®, and Basofil® blend.

Ventilated Eagle™

Our Ventilated Eagle™ comes in two designs: A Ventilated Full Drape and a Ventilated Face and Chest (Note: the Full Drape and Face and Chest styles are available in non-ventilated styles...

call for details). Each offers Comfort Top and special face opening in a larger hood, and a ventilated crown. Ventilated Eagle™ is available in Eagle HTC™ Carbon blend material, Nomex®, Pbi™, P84®, and Basofil® blend.

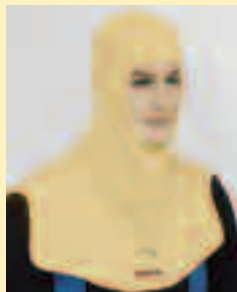


Ventilated Full Drape (VFD) – Pbi™ mesh ventilating panel with double layer head, neck and full 8" chest/back drapes provides extra interface overlap at the chest and back that some people prefer, but others find too bulky.

Ventilated Face and Chest (VFC) – Pbi™ mesh ventilating panel with double layer head, neck and 3.5" drape provides the required amount of interface overlap at the chest, back and shoulders most people prefer.

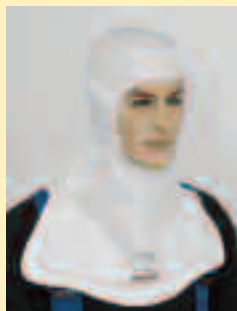
Ultimate Eagle™

The Ultimate Eagle™ offers true shoulder-to-shoulder protection with 17" wide bibs front and back. It provides maximum protection without uncomfortable bunching. Available in Nomex®, Pbi™, P84®, and Basofil® blend.



Flared Eagle™

The Flared Eagle™ offers good chest protection while its notched shoulders reduce bunching at the neck. Comfort Top allows two-way



stretch for a great fit. Binding finishes both face opening and hem. Available in Nomex®, Pbi™, P84®, and Basofil® blend.

Flatlock Eagle™

Similar in size, appearance and Comfort Top technology to the Flared Eagle™, the Flatlock Eagle™ includes a gathered face opening. Its true flatlock



seaming eliminates potential discomfort at pressure points, and the shoulder notches reduce bunching at the neck. The Flatlock Eagle™ is available in Nomex®, Pbi™, P84®, and HTC™ Carbon blend (with Natural Fit face opening). Note: HTC™ Carbon blend Flatlock Eagle™ is not available in the Comfort Top style.

Oversized Eagle™

This Phoenix-style Oversized Combo incorporates an outer layer of Basofil® and an inner layer of P84®/Lenzing in an oversized hood with "Natural Fit" face opening, Flatlock top and oversized head area.



Economy Eagle™

Our Economy Eagle™ is designed to meet the minimum standards where price and/or a minimal size is the primary issue.



The Economy Eagle™ is available in Nomex®, Pbi™, P84®, and Basofil® blend.

It is also available in Eagle HTC™ Carbon blend material with a “Natural Fit” face opening that stretches to over 17” and provides superior fit and comfort.

This style also features Comfort Top which allows the helmet to rest firmly on the head and prevents the topseam from “digging in.” Note: HTC™ Carbon blend Economy Eagle™ is not available in the Comfort Top style.

Reed Hoods (2002 Edition)

This Reed Hood is the most up-to-date design from the legendary Captain Clifford Reed. It can be configured in almost all turnout coat composite layups. We offer two styles of Reed Hoods.

HD-REED – 3 Layers

Outer Shell: 7.5 oz Bronze Pbi™

Moisture Barrier: Crosstech® on Nomex® facecloth moisture barrier

Thermal Liner: Platinum Semi-slick light batt Aralite inner liner (TPP before/after wash... 40.2/44.1)



HD-REED3 – 2 Layers

Houston Fire Department specified layup

Outer Shell: 7.5 oz Pbi™

Moisture Barrier: None

Thermal Liner: Platinum Semi-slick facecloth/heavy batt thermal liner Extra thermal liner layer at crown (TPP before/after wash...29.1/32.6)

All Reed Hoods feature an extra layer of gray Nomex® facecloth/heavy batt thermal liner over the ears. The 2002 Edition Reed Hood offers the very high traditional Reed Hood levels of insulation but with this important advancement – improved patterning and construction for a better “lay” on the body and better helmet interface.

6 Choices of Materials

Note: All knit hoods have a TPP of 20 or greater as required by NFPA 1971.

Nomex® Lenzing (2-layer wt., 16.5 - 17.0 oz)

Super Hoods feature an inner layer of 8 oz-per-square-yard Rib-Knit Nomex® Lenzing in a 20/80 Blend. By altering the fiber’s performance, the Lenzing component of the fabric slows the thermal transmission efficiency (increases its TPP) while boosting its water-wicking ability and overall comfort.

TPP before/after wash...26.4/33.9

100% Nomex® (2-layer wt., 16.5 - 17.0 oz) – To meet Thermal Protection Performance (TPP) requirements, Nomex® hoods (white in color) were beefed up to 8.25 - 8.5 ounce, 100% Nomex® knit. This material handles perspiration only moderately well and, while on the heavy side, is on the economical end of the scale.

TPP before/after wash...22.1/26.7

P-84®/Lenzing PFR Rayon/Kevlar® (2-layer wt. 17.0 oz)

Available in navy blue and pale yellow (natural), this 8.5 ounce knit is a blend of 40% P-84®, 55% PFR Rayon, 5% Kevlar®. This blend handles perspiration very well, is a step up in heat resistance, is slightly heavy, but the most economical choice.

TPP before/after wash...22.2/24.2

Pbi™/Lenzing PFR Rayon (2-layer wt. 13.0 oz)

Bronze in color, the 6.5 ounce knit is a 20% Pbi®, 80% PFR Rayon blend. Yet another step up in heat resistance, it also handles perspiration extremely well and is often

chosen as being the most comfortable of the materials. While a bit more expensive, it has been the choice for overall best insulation, heat resistance and comfort for over 15 years.

TPP before/after wash...23.2/34.1

Basofil®/Nomex® Blend (2-layer wt. 16.0 - 17.0 oz)

– 40% Basofil® blended with 60% Nomex®, this material is an extremely good heat blocker, economically improving on 100% Nomex®. White.

TPP before/after wash...23.8/29.6

Eagle HTC™ Carbon Blend (2-layer wt. 13.5 oz)

– Combining carbon fiber, Kevlar® and P-84®, this blend offers superior strength compared to other carbon blends on the market. Black.

TPP before/after wash...24.3/28.5

American Firewear’s Reed Hoods

– Our standard Reed Hoods are made from 7.5 oz Pbi™, Platinum Semi-slick facecloth/heavy batt thermal liner. The HD-REED includes a Crosstech® moisture barrier. Other outer shell and thermal liners may be specified, as long as the resulting composite meets NFPA 1971 requirements.

HD-REED – 3 Layers

TPP before/after wash: 40.2/44.1

HD-REED3 – 2 Layers

TPP before/after wash: 29.1/32.6

Nomex® Thread

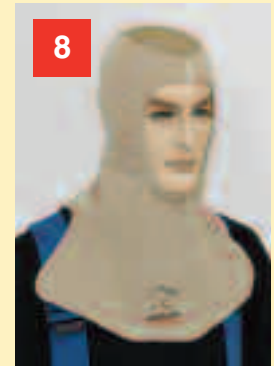
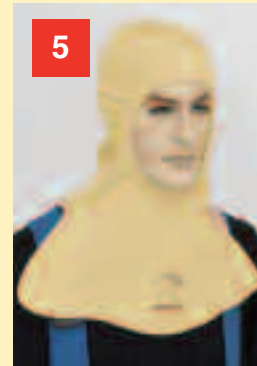
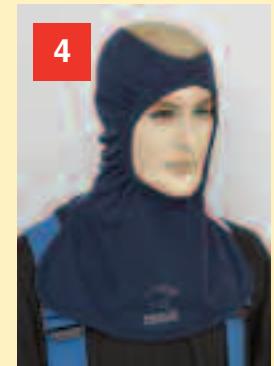
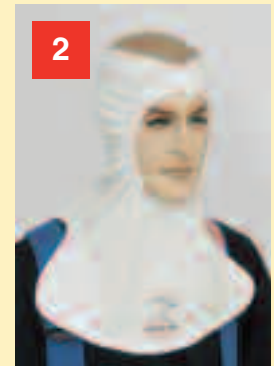
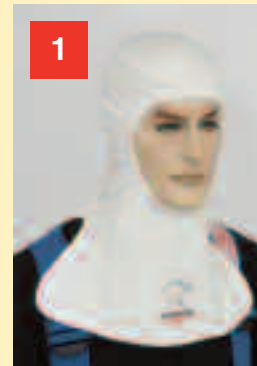
All American Firewear hoods are sewn with 100% Nomex® thread.

Model	Description
-------	-------------

We have automated the production line on these high volume products, so we are able to offer these extra comfort products at the SAME or lower price of less protective products.

Super Hoods – Our Recommended Models

1	300-0422FNF	Full Drape, Square Bib, Notched Shoulders, Comfort Top – Nomex® Lensing – White
2	300V0422FNF	Ventilated, Full Drape, Square Bib, Notched Shoulders – Nomex® Lensing – White
3	300-0482FNF-V	Full Drape, Square Bib, Notched Shoulders, Comfort Top – P-84®/PFR Rayon – Navy
4	300V0482FNF-V	Ventilated, Full Drape, Square Bib, Notched Shoulders – P-84®/PFR Rayon – Navy
5	300-0482FNF-N	Full Drape, Square Bib, Notched Shoulders, Comfort Top – P-84®/PFR Rayon – Yellow (Natural) Made-to-order – <u>NOT STOCKED</u>
6	300V0482FNF-N	Ventilated, Full Drape, Square Bib, Notched Shoulders – P-84®/PFR Rayon – Yellow (Natural) Made-to-order – <u>NOT STOCKED</u>
7	300-0452FNF	Full Drape, Square Bib, Notched Shoulders, Comfort Top – Pbi™ Blend – Bronze
8	300V0452FNF	Ventilated, Full Drape, Square Bib, Notched Shoulders – Pbi™ Blend – Bronze

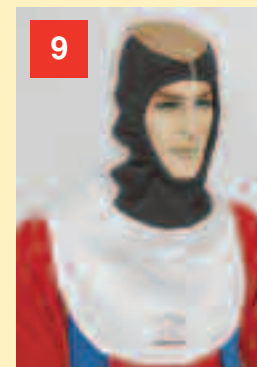


Model	Description
-------	-------------

Heat-Guard Hoods

9	HD-VFDN-VC	Ventilated Full Drape, Black HTC™ Carbon Blend Face/ Interior Nomex® Fleece – 100% White Nomex® Hood Shell
10	HD-FDN-VC	Full Drape, Comfort Top, Black HTC™ Carbon Blend Face/Interior Nomex® Fleece – 100% White Nomex® Hood Shell

TPP Carbon/Nomex® Front before/after wash...40.3/45.8
 TPP Nomex® Only Rear before wash...25.9



American Firewear Hoods Are IN STOCK

We Ship within Days of Order 98% of the Time

Model	Description
-------	-------------

Supreme Eagle™

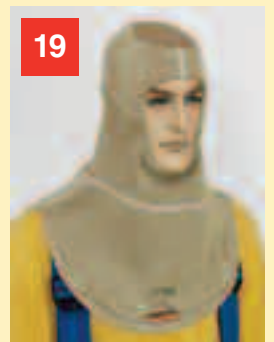
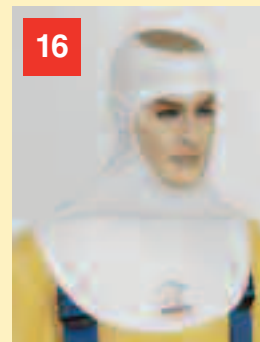
11	300-22007FNF	Full Drape, Square Bib, Comfort Top, Oversized Head w/Flat Seam, Natural Face – 100% Nomex® – White
12	300-22557FNF	Full Drape, Square Bib, Comfort Top, Oversized Head w/Flat Seam, Natural Face – Pbi™ Blend – Bronze
13	300-22667FNF	Full Drape, Square Bib, Comfort Top, Oversized Head w/Flat Seam, Natural Face – HTC™ Carbon Blend – Black
14	300-22887FNF	Full Drape, Square Bib, Comfort Top, Oversized Head w/Flat Seam, Natural Face – P84® – Yellow
15	300-22997FNF	Full Drape, Square Bib, Comfort Top, Oversized Head w/Flat Seam, Natural Face – Basofil® – Off White



Model	Description
-------	-------------

Ventilated Eagle™ – Full Drape

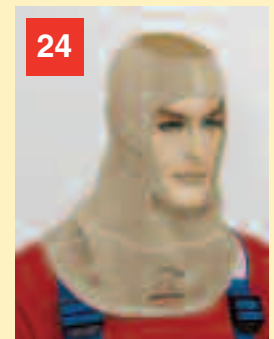
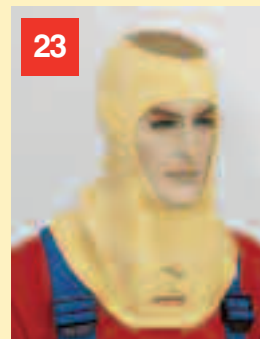
16	HD-VFDN	Ventilated Full Drape – 100% Nomex® – White
17	HD-VFDP84-V	Ventilated Full Drape – P-84®/PFR Rayon – Navy
18	HD-VFDP84-N	Ventilated Full Drape – P-84®/PFR Rayon – Yellow
19	HD-VFDPBIR	Ventilated Full Drape – Pbi™ Blend – Bronze
20	HD-VFD-HTC	Ventilated Full Drape – Eagle HTC™ Carbon Blend – Black



Model	Description
-------	-------------

Ventilated Eagle™ – Face and Chest

21	HD-VFCN	Ventilated Face and Chest – 100% Nomex® – White
22	HD-VFCP84-V	Ventilated Face and Chest – P-84®/PFR Rayon Navy
23	HD-VFCP84-N	Ventilated Face and Chest – P-84®/PFR Rayon Yellow
24	HD-VFCPBIR	Ventilated Face and Chest – Pbi™ Blend – Bronze
25	HD-VFC-HTC	Ventilated Face and Chest – Eagle HTC™ Carbon Blend – Black



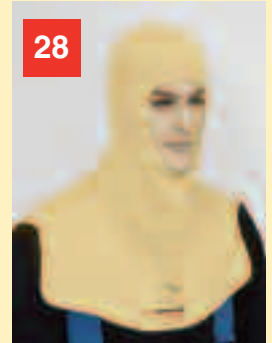
Hood Product Line Continues...

Hood Product Line Continued...

Model	Description
-------	-------------

Ultimate Eagle™

26	300-2207	Full Drape, Square Bib, – 100% Nomex® – White
27	300-2257	Full Drape, Square Bib, – Pbi™ Blend – Bronze
28	300-2287	Full Drape, Square Bib, – P84™ – Yellow
29	300-2297	Full Drape, Square Bib, – Basofil® Blend – Off White



Model	Description
-------	-------------

Flared Eagle™

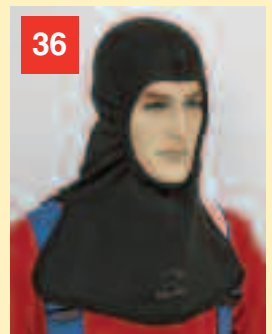
30	300-0400	Full Drape, Square Bib, Notched Shoulders, Comfort Top – 100% Nomex® – White
31	300-0450	Full Drape, Square Bib, Notched Shoulders, Comfort Top – Pbi™ Blend – Bronze
32	300-0480	Full Drape, Square Bib, Notched Shoulders, Comfort Top – P84® – Yellow
33	300-0490	Full Drape, Square Bib, Notched Shoulders, Comfort Top – Basofil® Blend – Off White



Model	Description
-------	-------------

Flatlock Eagle™

34	300-0400F	Full Drape, Square Bib, Notched Shoulders, Comfort Top, Flat Seam Front and Back – 100% Nomex® – White
35	300-0450F	Full Drape, Square Bib, Notched Shoulders, Comfort Top, Flat Seam Front and Back – Pbi™ Blend – Bronze
36	300-0460FNF	Full Drape, Square Bib, Notched Shoulders, Flatlock Head Seams, Natural Face – Eagle HTC™ Carbon Blend – Black
37	300-0480F	Full Drape, Square Bib, Notched Shoulders, Comfort Top, Flat Seam Front and Back – P84® – Yellow
38	300-0490F	Full Drape, Square Bib, Notched Shoulders, Comfort Top, Flat Seam Front and Back – Basofil® Blend – Off White

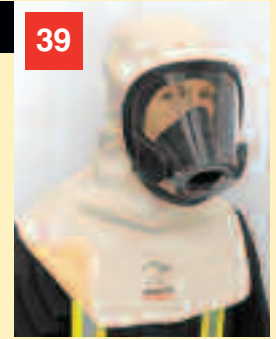


American Firewear Hoods Are IN STOCK

We Ship within Days of Order 98% of the Time

Note: Since there are several ways to measure hoods, flat, on a headform, etc., please contact our Customer Service Department for dimensioning information as required on any hood style noted.

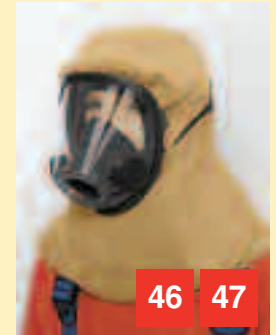
Model	Description
Oversize Eagle™	
39 300-22989FNF	Full Drape, Square Bib, Oversized Head, Natural Face – 2 Layer – Basofil® Outer Layer w/P84® Inner Layer



Model	Description
Economy Eagle™	
40 300-0800	Face and Chest, Comfort Top – Nomex® – Off White
41 300-0850	Face and Chest, Comfort Top – Pbi™ Blend – Bronze
42 300-0860FNF	Face and Chest, Natural Face – Eagle HTC™ Carbon Blend – Black
43 300-0880	Face and Chest, Comfort Top – P-84®/PFR Rayon – Natural
44 300-0885	Face and Chest, Comfort Top – P-84®/PFR Rayon – Navy
45 300-0890	Face and Chest, Comfort Top – Basofil® Blend – White



Reed Hoods (2002 Edition)	
46 HD-Reed	Reed 3-Layer – Bronze Pbi™ Outer Shell, Crosstech® on Nomex® Facecloth Moisture Barrier, Platinum Semi-slick Light Batt Aralite® Thermal (Inner) Liner (TTP Before/After Wash – 40.2/44.1)
47 HD-Reed3	Reed 2-Layer - Bronze Pbi™ Outer Shell, No Moisture Barrier, Platinum Semi-slick Heavy Batt Aralite® Thermal Liner, Extra Thermal Liner Layer at Crown (TTP Before /After Wash — 29.1/32.6)



Reed Hood Sizes

Sizes: Reed Hoods come in sizes from XS through XXXL. They can be custom made in extreme circumstances.

Type of Masks: The Reed Hood was originally designed to fit SCOTT AV-2000 masks. New production models have been adjusted so they can usually work

with both AV-200 and AV-3000 masks. When properly fitted, they can work with many other masks too.

Fitting: The human head comes in many combinations of sizes, shapes and crown heights, plus mask brands and sizes come into play. As such, it is best to actually fit the individual while they are

wearing the air mask they will be wearing. Therefore, you will be pleased to exchange any Reed Hoods that are returned in Like New, Unused Condition with the original packaging for Reed Hoods of the same spec and current NFPA Edition, but in a different size. Contact your regional team to pre-arrange this service should you need it.

Note: Since there are several ways to measure hoods, flat, on a headform, etc., please contact our Customer Service Department for dimensioning information as required on any hood style noted.

American Firewear Hoods Are Now IN STOCK

We Ship within Days of Order 98% of the Time