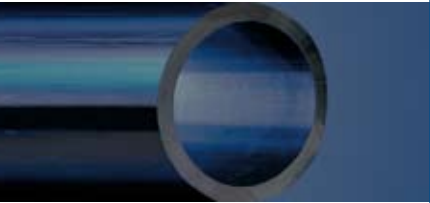
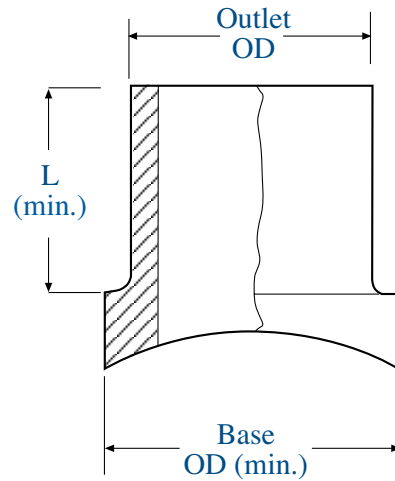


IPS Branch Saddle



IPS  
HDPE  
Fittings



IPS Branch Saddle

Nominal Outlet Size(in)	Outlet OD(in)	DR	Part #	Dimensions		Weight (lbs)	Shipping Method
				L (in)	Base OD (in)		
2	2.375	11	Varies*	2.5	2.6	1	FedEx
3	3.5	11	Varies*	3.13	3.88	1	FedEx
4	4.5	11	Varies*	3.13	4.8	2	FedEx
6	6.625	11	Varies*	4.38	6.81	4	FedEx
8	8.625	11	Varies*	5.5	9	8	FedEx
10	10.75	11	Varies*	6	11.5	16	FedEx
12	12.75	11	Varies*	7.5	13.35	32	FedEx

\* Any size(IPS/DIPS) main available, but must be larger than outlet size. Consideration must be given that heater plate and fusion unit are available for rent.

\*\* Hole saws for field cutting coupons are available for purchase. See fusion equipment section for accessory tooling.

\*\*\* Pressure rating of saddles are equal to pipe DR of main. Other DR outlets may be available. Contact ISCO for availability.

1-800-345-ISCO

www.isco-pipe.com