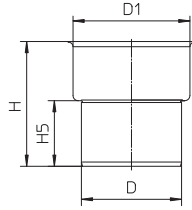
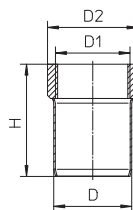


SPECIFICATION: BLÜCHER PIPE AISI Type 316L (standard) stainless steel pipe system, with Push-Fit socket connections with EPDM (standard) sealing ring. All BLÜCHER PIPE to be treated with pickling and passivation finish process.



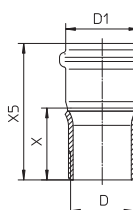
Cast Iron Pipe Adaptor Dimensional Chart

Model No.	D	D1	H	H5
CIA-3-316	3"(75)	3-11/16"(93)	4-15/16"(125)	2-5/8"(66)
CIA-4-316	4"(110)	5"(127)	5-9/16"(141)	3"(76)
CIA-6-316	6"(160)	7"(177)	7-1/16"(179)	3-15/16"(100)



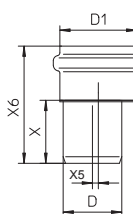
Female Adaptor Dimensional Chart

Model No.	D	D1	H	H5
FA-1-1/2x1-1/4-316	1-1/2"(40)	1-1/4"(32)	2-13/16"(70)	1-13/16"(45)
FA-1-1/2x1-1/2-316	1-1/2"(40)	1-1/2"(40)	2-7/8"(73)	2-1/4"(57)
FA-2x1-316	2"(50)	1"(25)	3-11/16"(93)	1-5/8"(40)
FA-2x1-1/4-316	2"(50)	1-1/4"(32)	2-7/8"(72)	1-15/16"(48)
FA-2x1-1/2-316	2"(50)	1-1/2"(40)	2-7/8"(72)	2-5/16"(58)
FA-2x2-316	2"(50)	2"(50)	3-1/16"(77)	2-11/16"(67)



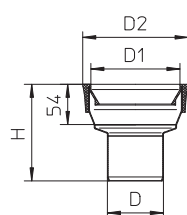
Male Adaptor Dimensional Chart

Model No.	D	D1	X	X5
MA-1-1/4x2-316	1-1/4"(32)	2"(50)	3-7/8"(97)	2"(50)
MA-1-1/2x2-316	1-1/2"(40)	2"(50)	3-7/8"(98)	2-1/16"(52)
MA-2x2-316	1"(25)	2"(50)	3-7/8"(98)	2-1/16"(52)



Side Inlet Adaptor Dimensional Chart

Model No.	D	D1	X	X5	X6
CSIA-1-1/4x2-316	1-1/4"(32)	2"(50)	2-1/16"(52)	-	3-15/16"(99)
ESIA-1-1/2x2-316	1-1/2"(40)	2"(50)	1-3/4"(43)	3/16"(4)	3-3/16"(80)



Toilet Adaptor Dimensional Chart

Model No.	D	D1	H	D2
TA-3x4-316	3"(75)	4"(110)	5-1/8"(129)	5-9/16"(141)
TA-4x4-316	4"(110)	4"(110)	4-15/16"(124)	5-9/16"(141)

Job Name _____ Contractor _____

Job Location _____ Approval _____

Engineer _____ Contractor's P.O. No. _____

Approval _____ Representative _____