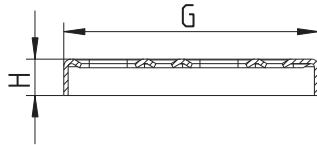


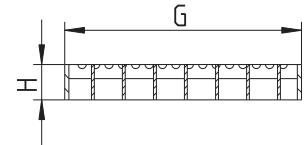
1/8" Standard Grating



Dimensional Chart

Model No.	G	H	Load Class
BG-8	6-5/8"x6-5/8" (168x168)	15/16" (24)	MD
BG-12	10-5/8"x10-5/8" (270x270)	15/16" (24)	MD

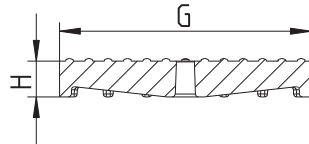
Mesh Grating (-MG)



Dimensional Chart

Model No.	G	H	Load Class
BMG-8	6-5/8"x6-5/8" (168x168)	15/16" (24)	HD
BMG-12	10-5/8"x10-5/8" (270x270)	15/16" (24)	HD

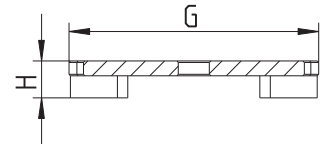
Hygenic-Pro Grating (-HG)



Dimensional Chart

Model No.	G	H	Load Class
BHG-8	6-5/8"x6-5/8" (168x168)	15/16" (24)	HD
BHG-12	10-5/8"x10-5/8" (270x270)	15/16" (24)	HD

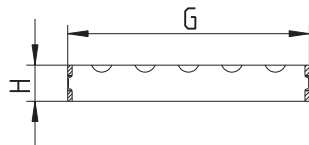
Slot Grating (-SG)



Dimensional Chart

Model No.	G	H	Load Class
BSG-8	6-5/8"x6-5/8" (168x168)	15/16" (24)	HD
BSG-12	10-5/8"x10-5/8" (270x270)	15/16" (24)	HD

Ladder Grating (-LG)



Dimensional Chart

Model No.	G	H	Load Class
BLG-8	6-5/8"x6-5/8" (168x168)	15/16" (24)	XHD
BLG-12	10-5/8"x10-5/8" (270x270)	15/16" (24)	XHD

Load Rating

Load ratings are based upon maximum anticipated traffic, in accordance with American National Standards ASME A112.21.1M. See specification pages for specific load rating data.

Light Duty (LD) - Safe Live Load Under 2000 lbs.

Medium Duty (MD) - Safe Live Load 2000-4999 lbs.

Heavy Duty (HD) - Safe Live Load 5000-7499 lbs.

Extra Heavy Duty (XHD) - Safe Live Load Between 7500 and 10,000 lbs.

Special Duty (SD) - Safe Live Load Over 10,000 lbs.

Job Name _____ Contractor _____

Job Location _____ Approval _____

Engineer _____ Contractor's P.O. No. _____

Approval _____ Representative _____