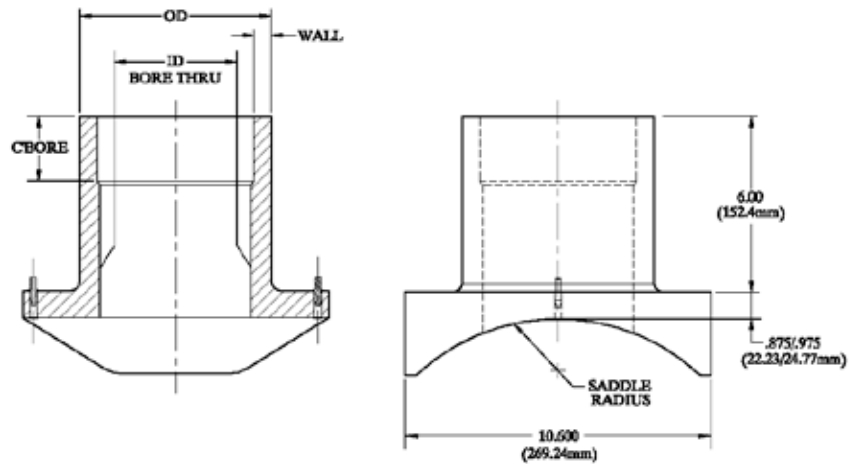


Branch Saddle: 6" IPS Butt Outlet



Nominal Size Outlet	O.D.	I.D.	Wall	C'Bore
6" IPS DR 17	6.625 ±0.018	5.750 ±0.062	0.390 ±0.078	2.25 ±0.06

Outlet Size	Part #	Fusion Time Setting	Pin	Clamp Style See Page 207	Weight
8x6 IPS DR 17	5758407*	M	4.7mm	K	7.500
8" U-Liner x 6 IPS DR 17	5758439*	M	4.7mm	N	6.462
10X6 IPS DR 17	5758408*	M	4.7mm	K	8.000
12X6 IPS DR 17	5758408*	M	4.7mm	K	6.370
14X6 IPS DR 17	5758410*	M	4.7mm	K	6.000
16X6 IPS DR 17	5758411*	M	4.7mm	K	6.000
16" DIPS x 6 IPS DR 17	5758471*	M	4.7mm	K	6.000
18X6 IPS DR 17	5758412*	M	4.7mm	K	6.140
20X6 IPS DR 17	5758413*	M	4.7mm	K	5.975
24X6 IPS DR 17	5758414*	M	4.7mm	K	5.710
30X6 IPS DR 17	5758415*	M	4.7mm	K	5.595
32X6 IPS DR 17	5758416*	M	4.7mm	K	5.575
34X6 IPS DR 17	5758417*	M	4.7mm	K	5.535
36X6 IPS DR 17	5758418*	M	4.7mm	K	5.501
42X6 IPS DR 17	5758419*	M	4.7mm	K	6.525
48X6 IPS DR 17	5758420*	M	4.7mm	K	6.525

A=Automatic Identification for Fusion Time. M=Manual Setting or Bar Code Setting.

* Special Lead Requirements.

1-800-345-ISCO

www.isco-pipe.com