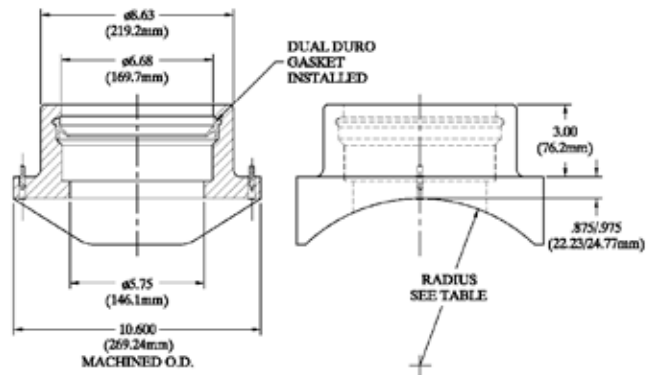


## Branch Saddle: 6" PSM Gasket Outlet



Outlet Size	Part #	Pin	Fusion Time Setting	Clamp Style See Page 207	Weight
7.125 IPS x 6 PSM DR 35	5758421*	4.7 mm	M	K	9.665
8 IPS x 6 PSM DR 35	5758378*	4.7 mm	M	K	8.500
8" U-Liner x 6 PSM DR 35	5758437*	4.7 mm	M	N	9.000
9.05 DIPS x 6 PSM DR 35	5758406*	4.7 mm	M	K	7.590
10 IPS x 6 PSM DR 35	5758379*	4.7 mm	M	K	8.000
12 IPS x 6 PSM DR 35	57588380*	4.7 mm	M	K	7.870
14 IPS x 6 PSM DR 35	5758391*	4.7 mm	M	K	7.000
16 IPS x 6 PSM DR 35	5758381*	4.7 mm	M	K	6.140
18 IPS x 6 PSM DR 35	5758392*	4.7 mm	M	K	7.090
20 IPS x 6 PSM DR 35	5758382*	4.7 mm	M	K	6.110
22 IPS x 6 PSM DR 35	10002474*	4.7 mm	M	K	
24 IPS x 6 PSM DR 35	5758383*	4.7 mm	M	K	7.000
30 IPS x 6 PSM DR 35	5758384*	4.7 mm	M	K	7.000
32 IPS x 6 PSM DR 35	5758385*	4.7 mm	M	K	7.000
34 IPS x 6 PSM DR 35	5758386*	4.7 mm	M	K	7.000
36 IPS x 6 PSM DR 35	5758387*	4.7 mm	M	K	7.000
42 IPS x 6 PSM DR 35	5758388*	4.7 mm	M	K	7.000
48 IPS x 6 PSM DR 35	5758389*	4.7 mm	M	K	7.000

A=Automatic Identification for Fusion Time. M=Manual Setting or Bar Code Setting.  
\* Special Lead Requirements.

Central  
Electrofusion  
Products

1-800-345-ISCO

www.isco-pipe.com