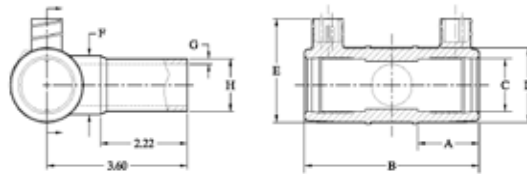


End Cap Assembly

Part Number	Description	Size	Fusion Time Setting	Weight
5753070*	1/2 CTS	Solid/4.7mm	M	N/A
5753074*	3/4 IPS	Solid/4.7mm	M	N/A
5753076*	1 CTS	Solid/4.7mm	M	N/A
5753086*	1-1/4 CTS	Solid/4.7mm	M	N/A
5753080*	1-1/4 IPS	Solid/4.7mm	M	N/A
5753084*	2 IPS	Solid/4.7mm	M	N/A
5753245*	12 IPS	Solid/4.7mm	M	N/A

Tees: CTS & IPS



Nominal Pipe Outlet Size	Dimension "A" Stab Depth	Dimension "B" OAL	Diameter "C" Body I.D.	Diameter "D" Body O.D.	Dimension "E"	Diameter "F"	Diameter "G" Wall	Diameter "H" Outlet O.D.
1/2" CTS	1.360	3.425	0.625 ±.010	1.125	1.86	0.71	0.090	0.625 +.010
1/2" IPS	1.420	3.904	0.850 ±.010	1.375	2.10	1.10	0.090 +.018	0.840 +.008
3/4" IPS	1.360	3.904	1.052 ±.010	1.720	2.45	1.25	0.113 +.023	1.050 +.008
1" IPS	1.570	4.477	1.300 ±.010	1.875	2.60	1.48	0.120 +.024	1.315 +.010
1-1/4" IPS	1.820	5.241	1.660 ±.010	2.270	3.00	1.84	0.166 +.033	1.660 +.010

Part Number	Description	Size	Fusion Time Setting	Pin	Weight
5751209	Equal Tee	3/4 IPS	A	3.0 mm	N/A
5756519*	Equal Tee	3/4 IPS	M	Solid / 4.7 mm	N/A
5751589*	Equal Tee	1 IPS	M	3.0 mm	0.210
5751588*	Equal Tee	1-1/4 IPS	M	Solid / 4.7 mm	0.380
5751587*	Equal Tee	2 IPS	M	3.0 mm	0.990
5751120*	Elbow 90	1 IPS	M	SPR 4.7 mm	0.182
5751590*	Elbow 90	2 IPS	M	SPR 4.7 mm	0.780

A=Automatic Identification for Fusion Time. M=Manual Setting or Bar Code Setting.

* Special Lead Requirements. **SPR= Single Pin with Resistor**

Central
Electrofusion
Products

1-800-345-ISCO

www.isco-pipe.com