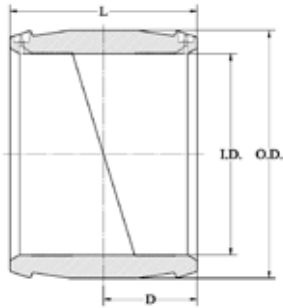


3408 Electrofusion Couplings - 1/2" to 12" IPS/ DIPS



Part Number	Nominal Size	Pin	Fusion Time Setting	Weight Lbs.	I.D. Max.	I.D. Min.	O.D. Nom.	Stab Depth Nom.	Height Nom.	Length Nom.
5760019	1/2" CTS	4.7mmR	A	0.12	0.633	0.615	1.13	1.36	2.01	3.15
5757546	1/2" IPS AWWA	4.7mmR	A	0.138	0.854	0.834	1.38	1.42	2.15	2.98
5757515	3/4" CTS AWWA	4.7mmR	A	0.15	0.89	0.87	1.38	1.42	2.15	2.98
5760022	3/4" IPS AWWA	4.7mmR	A	0.18	1.073	1.065	1.72	1.36	2.48	3.46
5760023	1" CTS AWWA	4.7mmR	A	0.2	1.142	1.132	1.72	1.36	2.52	3.46
5750639	1" IPS AWWA	4.7mmR	A	0.2	1.331	1.321	1.88	1.57	2.63	3.46
5760026	1 1/4" IPS AWWA	4.7mmR	A	0.3	1.69	1.675	2.27	1.82	3.04	3.86
5754049	1 1/4" SIDR	3.0mm	A	0.331	1.595	1.62	2.27	1.82	3.0	3.7
5754075	1 1/4" Duct	3.0mm	A	0.324	1.520	1.490	2.27	1.82	3.0	3.7
5760028	1 1/2" IPS AWWA	4.7mmR	A	0.395	1.917	1.907	2.6	1.89	3.36	4.33
5756611*	2" CTS AWWA	Solid/4.7	M	0.305	2.145	2.13	2.80	2.125	3.59	4.37
5760030	2" IPS AWWA	4.7mmR	A	0.582	2.42	2.395	3.16	2.09	3.78	4.72
5756062	2" IPS Conduit	3.0mm	A	0.305	2.42	2.4	2.82	2.09	3.55	4.31
5754047	2 1/2" Conduit	3.0mm	A	0.552	2.956	2.894	3.5	2.06	4.17	4.25
10000358	3" IPS AWWA	4.7mmR	A	1.263	3.56	3.545	4.54	2.72	5.18	5.59
10000360	4" IPS FM (CL 200) AWWA	4.7mmR	A	2.547	4.545	4.51	5.57	3.0	6.51	6.14
5751970	4 DIPS AWWA	Solid/4.7	M	2.673	4.846	4.810	6.06	3.46	6.06	6.93
5750661*	5" IPS (140 mm)	Solid/4.7	A	3.08	5.547	5.524	6.93	3.54	7.56	7.17
10000359	6" IPS FM (CL 200) AWWA	4.7mmR	A	4.94	6.69	6.655	8.17	4.1	8.7	8.35
5751971*	6" DIPS AWWA	Solid/4.7	M	6.513	6.94	6.91	8.74	4.09	8.74	8.19
5750867	7" IPS	3.0mm	A	4.85	7.145	7.105	8.74	4.09	8.94	7.19
10000361	8" IPS FM (CL 200) AWWA	4.7mmR	A	7.125	8.7	8.67	10.63	4.7	11.2	9.48
5751972*	8" DIPS AWWA	Solid/4.7	M	11.875	9.105	9.075	11.14	5.08	11.14	10.16
5757544	10 IPS FM (CL 150) AWWA	4.7mmR	A	16.8	10.801	10.766	13.25	5.0	13.41	10.5
10000362	10 IPS FM (CL 200) AWWA	Solid/4.7	M	16.8	10.801	10.766	13.25	5.0	13.41	10.5
5751973*	10" DIPS AWWA	Solid/4.7	M	19	11.071	11.031	13.7	5.5	13.7	11.0
5757545	12" IPS FM (CL 150) AWWA	4.7mmR	A	25.2	12.795	12.74	15.7	5.5	15.84	11.5
10000363	12" IPS FM (CL 200) AWWA	Solid/4.7	M	25.5	12.795	12.74	15.7	5.5	15.84	11.5
5751974*	12 DIPS AWWA	Solid/4.7	M	31.5	13.162	13.122	16.2	6.5	16.2	13.1

A=Automatic Identification for Fusion Time. M=Manual Setting or Bar Code Setting.

* Special Lead Requirements.

