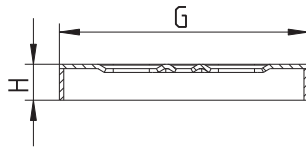


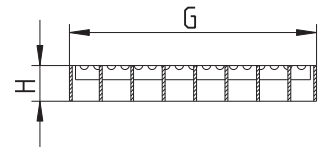
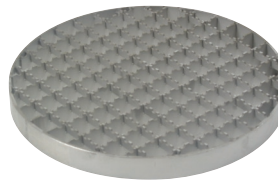
### 1/8" Standard Grating



Dimensional Chart

Model No.	G	H	Load Class
BG-8R	6-13/16"(173)	15/16"(24)	MD
BG-12R	10-3/4"(273)	15/16"(24)	MD

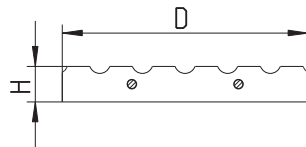
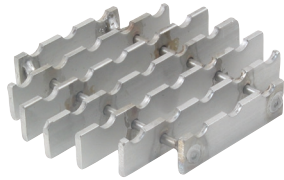
### Mesh Grating (-MG)



Dimensional Chart

Model No.	G	H	Load Class
BMG-8R	6-13/16"(173)	15/16"(24)	HD
BMG-12R	10-3/4"(273)	15/16"(24)	HD

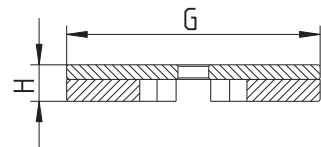
### Ladder Grating (-LG)



Dimensional Chart

Model No.	G	H	Load Class
BLG-8R	6-13/16"(173)	15/16"(24)	XHD
BLG-12R	10-3/4"(273)	15/16"(24)	XHD

### Slot Grating (-SG)



Dimensional Chart

Model No.	G	H	Load Class
BSG-8R	6-13/16"(173)	15/16"(24)	HD
BSG-12R	10-3/4"(273)	15/16"(24)	HD

### Load Rating

Load ratings are based upon maximum anticipated traffic, in accordance with American National Standards ASME A112.21.1M. See specification pages for specific load rating data.

**Light Duty (LD)** - Safe Live Load Under 2000 lbs.

**Medium Duty (MD)** - Safe Live Load 2000-4999 lbs.

**Heavy Duty (HD)** - Safe Live Load 5000-7499 lbs.

**Extra Heavy Duty (XHD)** - Safe Live Load Between 7500 and 10,000 lbs.

**Special Duty (SD)** - Safe Live Load Over 10,000 lbs.

Job Name \_\_\_\_\_ Contractor \_\_\_\_\_

Job Location \_\_\_\_\_ Approval \_\_\_\_\_

Engineer \_\_\_\_\_ Contractor's P.O. No. \_\_\_\_\_

Approval \_\_\_\_\_ Representative \_\_\_\_\_