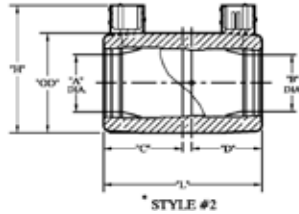
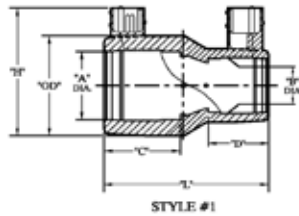


Reducer Couplings: ASTM F1055 IPS & CTS

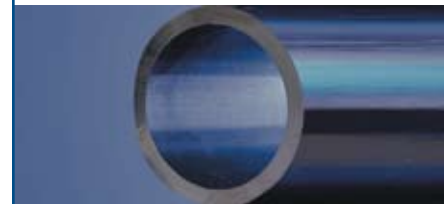


Nominal Size	Inside Dia. Max. "A"	Inside Dia. Min. "A"	Stab Depth Nom. "C"	Inside Dia. Max. "B"	Inside Dia. Min. "B"	Stab Depth Nom. "D"	Outside Dia. Nom. "OD"	Overall Ht. Nom. "H"	Overall Length. (Nom.) "L"
3/4" IPS x 1/2" CTS	1.052	1.038	1.25	.645	.629	1.47	1.69	2.50	3.28
1" IPS x 1/2" CTS	1.016	1.300	1.46	.640	.625	1.46	1.88	2.60	3.28
1" IPS x 1/2" IPS	1.316	1.300	1.46	.865	.860	1.53	1.88	2.60	3.28
1" IPS x 3/4" IPS	1.325	1.310	1.42	1.070	1.055	1.43	1.88	2.63	3.28
1" IPS x 1" CTS	1.325	1.315	1.42	1.130	1.115	1.43	1.88	2.63	3.28
*1-1/4" CTS x 1" IPS	1.390	1.375	1.55	1.330	1.315	1.55	1.88	2.56	3.30
*1-1/4" IPS x 1" IPS	1.675	1.655	1.88	1.322	1.315	1.57	2.27	3.00	3.70
*3" IPS x 2-1/2" IPS	3.570	3.535	2.74	2.890	2.890	2.34	4.54	5.18	5.59

Part Number	Size	Pin	Fusion Time Setting	Weight
5757553	3/4" IPS x 1/2" CTS AWWA	4.7mmR	A	N/A
5757547	1" IPS x 1/2" CTS AWWA	4.7mmR	A	N/A
5756578*	1" IPS x 1/2" IPS AWWA	Solid/4.7mm	M	N/A
5757548	1" IPS x 1/2" IPS AWWA	4.7mmR	A	N/A
5757549	1" IPS x 3/4" IPS AWWA	4.7mmR	A	N/A
5751200	1" IPS x 3/4" IPS AWWA	3.0mm	A	0.190
5757550	1" IPS x 1" CTS AWWA	4.7mmR	A	N/A
5751178	1" IPS x 1" CTS AWWA	3.0mm	A	0.186
5757551	1 1/4" CTS x 1" IPS AWWA	4.7mmR	A	N/A
5756558*	1 1/4" CTS x 1" IPS	Solid/4.7mm	M	N/A
5751182	1 1/4" CTS x 1" IPS AWWA	3.0mm	A	0.230
5757522	1 1/4" IPS x 1" IPS AWWA	4.7mmR	A	N/A

A=Automatic Identification for Fusion Time. M=Manual Setting or Bar Code Setting.

* Special Lead Requirements.



Central
Electrofusion
Products

1-800-345-ISCO

www.isco-pipe.com