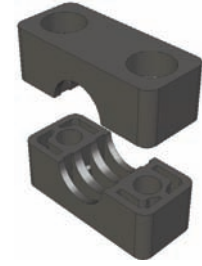


Clamp Pair Selection

Behringer's clamp halves are available in different materials and incorporate a modular insert by group size. Heavy Series pipe clamps are available in sizes from 1/4 in. (6.35mm) through 8.625 in. (219mm) OD Sizes.



Clamp Pair Selection and Part Numbers

Behringer Group	Pipe Size	Tube Size	Metric OD (mm)	Imperial OD (Inch)	Clamp Halves (See material code for *)
H3		1/4	6.4	0.250	HS-CLH-03-* 025
		3/8	9.5	0.375	HS-CLH-03-* 038
	1/8		10.0	0.405	HS-CLH-03-* 041
		1/2	12.7	0.500	HS-CLH-03-* 050
	1/4		13.7	0.540	HS-CLH-03-* 054
		5/8	16.0	0.620	HS-CLH-03-* 062
	3/8		17.1	0.675	HS-CLH-03-* 068
H4		3/4	19.0	0.750	HS-CLH-04-* 075
			20.0	0.790	HS-CLH-04-* 079
	1/2		21.3	0.840	HS-CLH-04-* 084
		7/8	22.2	0.870	HS-CLH-04-* 087
		1	25.4	1.000	HS-CLH-04-* 100
	3/4		26.7	1.050	HS-CLH-04-* 105
		30.0	1.181	HS-CLH-04-* 118	
H5		1 1/4	32.0	1.250	HS-CLH-05-* 125
	1		33.4	1.315	HS-CLH-05-* 132
		1 1/2	38.1	1.500	HS-CLH-05-* 150
	1 1/4		42.2	1.660	HS-CLH-05-* 166
H6	1		33.4	1.315	HS-CLH-06-* 132
	1 1/4		42.2	1.660	HS-CLH-06-* 166
		1 3/4	44.5	1.750	HS-CLH-06-* 175
	1 1/2		48.3	1.900	HS-CLH-06-* 190
		2	50.8	2.000	HS-CLH-06-* 200
		2 1/8	54.0	2.125	HS-CLH-06-* 213
		2 1/4	57.2	2.250	HS-CLH-06-* 225
	2		60.3	2.375	HS-CLH-06-* 238
		2 1/2	63.5	2.500	HS-CLH-06-* 250
	2 3/4	69.9	2.750	HS-CLH-06-* 275	
H7		2 3/4	69.9	2.750	HS-CLH-07-* 275
	2 1/2		73.0	2.875	HS-CLH-07-* 288
		3	76.2	3.000	HS-CLH-07-* 300
	3	3 1/2	88.9	3.500	HS-CLH-07-* 350
H8	3	3 1/2	88.9	3.500	HS-CLH-08-* 350
		4	102	4.000	HS-CLH-08-* 400
	4	4 1/2	114	4.500	HS-CLH-08-* 450
		5	127	5.000	HS-CLH-08-* 500
H9		5	127	5.000	HS-CLH-09-* 500
		5 1/4	133	5.250	HS-CLH-09-* 525
	5		141	5.563	HS-CLH-09-* 556
		6	152	6.000	HS-CLH-09-* 600
H10		6	152	6.000	HS-CLH-09-* 600
	6		168	6.625	HS-CLH-09-* 663
		8	203	8.000	HS-CLH-10-* 800
	8	219	8.625	HS-CLH-10-* 863	

Clamp Pair Material Codes (*)

P	[PP] Polypropylene Black Color
S	[SP] Santoprene Beige Color
A	[AL] Aluminum Aluminum Color

Custom Sizes

Custom sizes can be made by specially boring the clamp pair to any desired size. To order a special size, first find the group that this will fall under. All groups are available starting with 1/4 in. OD and can be used up to the maximum OD size in the chart below. This is expressed in the part number as a two-digit number (G#) Once you have determined your group size, simply add the desired OD of the line to be secured in the 3 digit end number of the clamp pair (XXX) by rounding the number to two decimals and dropping the decimal point. The part number will look like this:

HS-CLH-G#-***XXX**

Example: For a line with OD of 1.08 in., this would fall within the group 5. The Part number will be as follows:

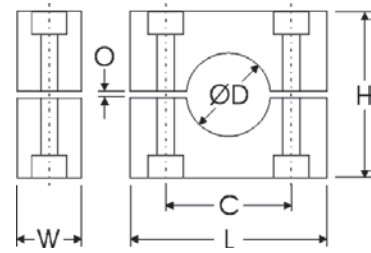
HS-CLH-05-*108

Special Bore Range by Group

Group (G#)	Range
H3	0.25 in. through 0.675 in.
H4	0.25 in. through 1.050 in.
H5	0.25 in. through 1.660 in.
H6	0.25 in. through 2.750 in.
H7	0.25 in. through 3.500 in.
H8	0.25 in. through 5.000 in.
H9	0.25 in. through 6.625 in.
H10	0.25 in. through 8.625 in.

Clamp Pair Dimensions

The robust Heavy Series design is larger and thicker than the Standard Series, and is designed for the toughest applications. As a general rule of thumb, the outside diameter of the line to be secured should not vary over or under the ØD dimension in the chart by more than $\frac{1}{2}$ of the tension clearance dimension (dimension "O"). Heavy Series pipe clamps are available in sizes from $\frac{1}{4}$ in. (6.35mm) through 8.625 in. (219mm) outside diameter sizes. If a required size is not available, custom sizes can be made to order.



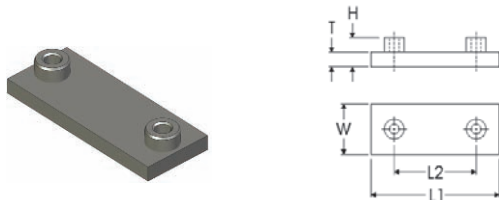
Clamp Pair Dimensional Information

Behringer Group	Metric ØD (mm)	Imperial ØD (Inch)	Clamp Halves (See page 1 for complete order numbers)	L	C	H	O	W	Weight Ea.
H3	6.4	0.250	HS-CLH-03-*-025	2.250 in. (57 mm)	1.300 in. (33 mm)	1.375 in. (35 mm)	0.063 in. (1.6 mm)	1.188 in. (30.2 mm)	0.07 lbs
	9.5	0.375	HS-CLH-03-*-038						
	10.0	0.405	HS-CLH-03-*-041						
	12.7	0.500	HS-CLH-03-*-050						
	13.7	0.540	HS-CLH-03-*-054						
	16.0	0.620	HS-CLH-03-*-062						
H4	17.1	0.675	HS-CLH-03-*-068	2.750 in. (70 mm)	1.770 in. (45 mm)	1.875 in. (48 mm)	0.063 in. (1.6 mm)	1.188 in. (30.2 mm)	0.09 lbs
	19.0	0.750	HS-CLH-04-*-075						
	20.0	0.790	HS-CLH-04-*-079						
	21.3	0.840	HS-CLH-04-*-084						
	22.2	0.870	HS-CLH-04-*-087						
	25.4	1.000	HS-CLH-04-*-100						
H5	26.7	1.050	HS-CLH-04-*-105	3.344 in. (87 mm)	2.360 in. (60 mm)	2.375 in. (60 mm)	0.063 in. (1.6 mm)	1.188 in. (30.2 mm)	0.15 lbs
	30.0	1.181	HS-CLH-04-*-118						
	32.0	1.250	HS-CLH-05-*-125						
	33.4	1.315	HS-CLH-05-*-132						
H6	38.1	1.500	HS-CLH-05-*-150	4.500 in. (115 mm)	3.530 in. (90 mm)	3.500 in. (89 mm)	0.125 in. (3.2 mm)	1.688 in. (43 mm)	0.35 lbs
	42.2	1.660	HS-CLH-05-*-166						
	44.5	1.750	HS-CLH-06-*-175						
	48.3	1.900	HS-CLH-06-*-190						
	50.8	2.000	HS-CLH-06-*-200						
	54.0	2.125	HS-CLH-06-*-213						
	57.2	2.250	HS-CLH-06-*-225						
	60.3	2.375	HS-CLH-06-*-238						
H7	63.5	2.500	HS-CLH-06-*-250	6.000 in. (152 mm)	4.810 in. (122 mm)	4.750 in. (121 mm)	0.125 in. (3.2 mm)	2.188 in. (55.6 mm)	0.78 lbs
	69.9	2.750	HS-CLH-06-*-275						
	73.0	2.875	HS-CLH-07-*-288						
	76.2	3.000	HS-CLH-07-*-300						
H8	88.9	3.500	HS-CLH-07-*-350	8.063 in. (205 mm)	6.620 in. (168 mm)	6.625 in. (168 mm)	0.188 in. (4.8 mm)	2.938 in. (74.6 mm)	2.31 lbs
	88.9	3.500	HS-CLH-08-*-350						
	102.0	4.000	HS-CLH-08-*-400						
	114.0	4.500	HS-CLH-08-*-450						
H9	127.0	5.000	HS-CLH-08-*-500	9.750 in. (248 mm)	8.060 in. (205 mm)	7.875 in. (200 mm)	0.188 in. (4.8 mm)	3.438 in. (87.3 mm)	2.59 lbs
	133.0	5.250	HS-CLH-09-*-525						
	141.0	5.563	HS-CLH-09-*-556						
	152.0	6.000	HS-CLH-09-*-600						
H10	168.0	6.625	HS-CLH-09-*-663	12.500 in. (318 mm)	10.430 in. (265 mm)	10.625 in. (270 mm)	0.188 in. (4.8 mm)	4.438 in. (113 mm)	7.73 lbs
	168.0	6.625	HS-CLH-10-*-663						
	203.0	8.625	HS-CLH-10-*-800						
	219.0	8.000	HS-CLH-10-*-863						

Securing Plate Selection and Dimensions

Single Weld Plate [SWP]

The typical mounting configuration is where the clamp is welded to the support structure.



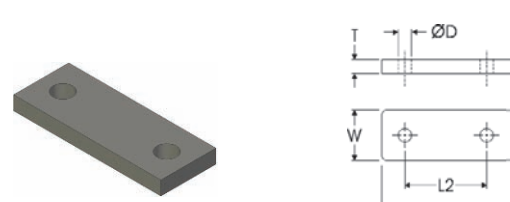
Group	Order Number	L1	L2	W	T	H	Thread	Weight Ea.
H3	HS-SWP-03-*	2.875 in. (73 mm)	1.30 in. (33 mm)	1.25 in. (32 mm)	0.313 in. (8 mm)	0.313 in. (8 mm)	3/8 - 16 UNC (M10)	0.34 lbs
H4	HS-SWP-04-*	3.375 in. (86 mm)	1.77 in. (45 mm)	1.25 in. (32 mm)	0.313 in. (8 mm)	0.313 in. (8 mm)	3/8 - 16 UNC (M10)	0.39 lbs
H5	HS-SWP-05-*	4.000 in. (102 mm)	2.36 in. (60 mm)	1.25 in. (32 mm)	0.313 in. (8 mm)	0.313 in. (8 mm)	3/8 - 16 UNC (M10)	0.45 lbs
H6	HS-SWP-06-*	5.875 in. (149 mm)	3.53 in. (90 mm)	1.75 in. (45 mm)	0.375 in. (10 mm)	0.380 in. (10 mm)	7/16 - 14 UNC (M12)	1.10 lbs
H7	HS-SWP-07-*	7.375 in. (187 mm)	4.81 in. (122 mm)	2.25 in. (57 mm)	0.375 in. (10 mm)	0.472 in. (12 mm)	5/8 - 11 UNC (M16)	1.71 lbs
H8	HS-SWP-08-*	10.000 in. (254 mm)	6.62 in. (168 mm)	3.00 in. (76 mm)	0.500 in. (13 mm)	0.680 in. (17 mm)	3/4 - 10 UNC (M20)	4.15 lbs
H9	HS-SWP-09-*	11.750 in. (298 mm)	8.06 in. (205 mm)	3.50 in. (89 mm)	0.500 in. (13 mm)	0.755 in. (19 mm)	7/8 - 9 UNC (M24)	5.83 lbs
H10	HS-SWP-10-*	14.500 in. (368 mm)	10.43 in. (265 mm)	4.50 in. (114 mm)	0.750 in. (19 mm)	0.755 in. (19 mm)	1-1/8 - 7 UNC (M30)	13.65 lbs

***Materials:**
C Unplated Carbon Steel (Standard Material)
T AISI 304 Grade Stainless Steel (A2 - 1.4301/1.4305)
X AISI 316 Grade Stainless Steel (A4 - 1.4401/1.4571)
Z Zinc Plated Steel (Special Order)

Threads:
omit As ordered above, the weld plates have standard UNC thread
-MET By adding the "-MET" designation after the material designation above, the threads will be metric

Single Cover Plate [SCP]

The cover plate is the standard top fixture for securing the clamp with hexagon head bolts.



Group	Order Number	L1	L2	W	T	ØD	Weight Ea.
H3	HS-SCP-03-*	2.250 in. (57 mm)	1.30 in. (33 mm)	1.25 in. (32 mm)	0.313 in. (8 mm)	0.438 in. (11 mm)	0.21 lbs
H4	HS-SCP-04-*	2.750 in. (70 mm)	1.77 in. (45 mm)	1.25 in. (32 mm)	0.313 in. (8 mm)	0.438 in. (11 mm)	0.26 lbs
H5	HS-SCP-05-*	3.344 in. (85 mm)	2.36 in. (60 mm)	1.25 in. (32 mm)	0.313 in. (8 mm)	0.438 in. (11 mm)	0.32 lbs
H6	HS-SCP-06-*	4.500 in. (114 mm)	3.53 in. (90 mm)	1.75 in. (45 mm)	0.375 in. (10 mm)	0.500 in. (13 mm)	0.77 lbs
H7	HS-SCP-07-*	6.000 in. (152 mm)	4.81 in. (122 mm)	2.25 in. (57 mm)	0.375 in. (10 mm)	0.688 in. (18 mm)	1.28 lbs
H8	HS-SCP-08-*	8.063 in. (205 mm)	6.62 in. (168 mm)	3.00 in. (76 mm)	0.500 in. (13 mm)	0.813 in. (21 mm)	3.19 lbs
H9	HS-SCP-09-*	9.750 in. (248 mm)	8.06 in. (205 mm)	3.50 in. (89 mm)	0.500 in. (13 mm)	0.938 in. (24 mm)	4.58 lbs
H10	HS-SCP-10-*	12.500 in. (318 mm)	10.43 in. (265 mm)	4.50 in. (114 mm)	0.750 in. (19 mm)	1.188 in. (30 mm)	11.31 lbs

***Materials:**
C Unplated Carbon Steel (Standard Material)
T AISI 304 Grade Stainless Steel (A2 - 1.4301/1.4305)
X AISI 316 Grade Stainless Steel (A4 - 1.4401/1.4571)
Z Zinc Plated Steel (Special Order)

Double Weld Plate [DWP]

Double weld plates are used to make a double heavy clamp, with both sets of clamp halves in line with the piping. This design can accommodate double the operating pressure as the single heavy pipe clamps.



Group	Order Number	L1	L2	W	T	H	Thread	Weight Ea.
H3	HS-DWP-03-*	2.875 in. (73 mm)	1.30 in. (33 mm)	2.50 in. (63 mm)	0.313 in. (8 mm)	0.313 in. (8 mm)	3/8 - 16 UNC (M10)	0.72
H4	HS-DWP-04-*	3.375 in. (86 mm)	1.77 in. (45 mm)	2.50 in. (63 mm)	0.313 in. (8 mm)	0.313 in. (8 mm)	3/8 - 16 UNC (M10)	0.78
H5	HS-DWP-05-*	4.000 in. (102 mm)	2.36 in. (60 mm)	2.50 in. (63 mm)	0.313 in. (8 mm)	0.313 in. (8 mm)	3/8 - 16 UNC (M10)	0.90
H6	HS-DWP-06-*	5.875 in. (149 mm)	3.53 in. (90 mm)	3.50 in. (89 mm)	0.375 in. (10 mm)	0.380 in. (10 mm)	7/16 - 14 UNC (M12)	2.20
H7	HS-DWP-07-*	7.375 in. (187 mm)	4.81 in. (122 mm)	4.50 in. (114 mm)	0.375 in. (10 mm)	0.472 in. (12 mm)	5/8 - 11 UNC (M16)	3.42
H8	HS-DWP-08-*	10.000 in. (254 mm)	6.62 in. (168 mm)	6.00 in. (152 mm)	0.500 in. (13 mm)	0.680 in. (17 mm)	3/4 - 10 UNC (M20)	8.30
H9	HS-DWP-09-*	11.750 in. (298 mm)	8.06 in. (205 mm)	7.00 in. (178 mm)	0.500 in. (13 mm)	0.755 in. (19 mm)	7/8 - 9 UNC (M24)	11.75
H10	HS-DWP-10-*	14.500 in. (368 mm)	10.43 in. (265 mm)	9.375 in. (238 mm)	0.750 in. (19 mm)	0.755 in. (19 mm)	1-1/8 - 7 UNC (M30)	28.00

***Material:**
C Unplated Carbon Steel (Standard Material)
T AISI 304 Grade Stainless Steel (A2 - 1.4301/1.4305)
X AISI 316 Grade Stainless Steel (A4 - 1.4401/1.4571)
Z Zinc Plated Steel (Special Order)

Threads:
omit As ordered above, the weld plates have standard UNC thread
-MET By adding the "-MET" designation after the material designation above, the threads will be metric

Double Cover Plate [DCP]

Double cover plates are used to make a double heavy clamp, with both sets of clamp halves in line with the piping. This design can accommodate double the operating pressure of the single heavy pipe clamps.



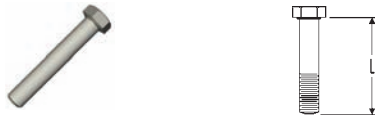
Group	Order Number	L1	L2	W	T	ØD	Weight Ea.
H3	HS-DCP-03-*	2.250 in. (57 mm)	1.30 in. (33 mm)	2.50 in. (63 mm)	0.313 in. (8 mm)	0.438 in. (11 mm)	0.42 lbs
H4	HS-DCP-04-*	2.750 in. (70 mm)	1.77 in. (45 mm)	2.50 in. (63 mm)	0.313 in. (8 mm)	0.438 in. (11 mm)	0.52 lbs
H5	HS-DCP-05-*	3.344 in. (85 mm)	2.36 in. (60 mm)	2.50 in. (63 mm)	0.313 in. (8 mm)	0.438 in. (11 mm)	0.64 lbs
H6	HS-DCP-06-*	4.500 in. (114 mm)	3.53 in. (90 mm)	3.50 in. (89 mm)	0.375 in. (10 mm)	0.500 in. (13 mm)	1.54 lbs
H7	HS-DCP-07-*	6.000 in. (152 mm)	4.81 in. (122 mm)	4.50 in. (114 mm)	0.375 in. (10 mm)	0.688 in. (18 mm)	2.56 lbs
H8	HS-DCP-08-*	8.063 in. (205 mm)	6.62 in. (168 mm)	6.00 in. (152 mm)	0.500 in. (13 mm)	0.813 in. (21 mm)	6.38 lbs
H9	HS-DCP-09-*	9.750 in. (248 mm)	8.06 in. (205 mm)	7.00 in. (178 mm)	0.500 in. (13 mm)	0.938 in. (24 mm)	9.16 lbs
H10	HS-DCP-10-*	12.500 in. (318 mm)	10.43 in. (265 mm)	9.375 in. (238 mm)	0.750 in. (19 mm)	1.188 in. (30 mm)	22.62 lbs

***Materials:**
C Unplated Carbon Steel (Standard Material)
T AISI 304 Grade Stainless Steel (A2 - 1.4301/1.4305)
X AISI 316 Grade Stainless Steel (A4 - 1.4401/1.4571)
Z Zinc Plated Steel (Special Order)

Fastening Hardware Selection and Dimensions

Hexagon Head Bolt [HEX]

The Hexagon head bolt is used when using clamps with cover plates.



Group	Order Number	L	UNC Thread	Metric Thread	Weight Ea.
H3	HS-HEX-03-*	1.75 in. (44 mm)	3/8 - 16 UNC	M10	0.06 lbs.
H4	HS-HEX-04-*	2.25 in. (57 mm)	3/8 - 16 UNC	M10	0.08 lbs.
H5	HS-HEX-05-*	2.75 in. (70 mm)	3/8 - 16 UNC	M10	0.09 lbs.
H6	HS-HEX-06-*	4.00 in. (102 mm)	7/16 - 14 UNC	M12	0.18 lbs.
H7	HS-HEX-07-*	5.25 in. (133 mm)	5/8 - 11 UNC	M16	0.50 lbs.
H8	HS-HEX-08-*	7.50 in. (191 mm)	3/4 - 10 UNC	M20	0.97 lbs.
H9	HS-HEX-09-*	8.50 in. (216 mm)	7/8 - 9 UNC	M24	1.56 lbs.
H10	HS-HEX-10-*	11.50 in. (292 mm)	1-1/8 - 7 UNC	M30	3.53 lbs.

***Materials:**

C	Unplated Carbon Steel (Standard Material)
T	AISI 304 Grade Stainless Steel (A2 - 1.4301/1.4305)
X	AISI 316 Grade Stainless Steel (A4 - 1.4401/1.4571)
Z	Zinc Plated Steel (Special Order)

Stacking Bolt [STB]

The stacking bolt is used when another clamp module will be stacked on top of the bottom or existing module. The head of the stacking bolt has a female thread for the next bolt to engage with.



Group	Order Number	L1	L2	L3	UNC	Metric	Weight Ea.
H3	HS-STB-03-*	1.969 in. (50 mm)	0.906 in. (23 mm)	0.906 in. (23 mm)	3/8 - 16	M10	0.10 lbs
H4	HS-STB-04-*	2.469 in. (63 mm)	1.406 in. (36 mm)	1.000 in. (25.4 mm)	3/8 - 16	M10	0.11 lbs
H5	HS-STB-05-*	2.969 in. (75 mm)	1.906 in. (48 mm)	1.000 in. (25.4 mm)	3/8 - 16	M10	0.13 lbs
H6	HS-STB-06-*	4.250 in. (108 mm)	2.875 in. (73 mm)	1.250 in. (32 mm)	7/16 - 14	M12	0.24 lbs
H7	HS-STB-07-*	5.500 in. (140 mm)	3.875 in. (98 mm)	1.250 in. (32 mm)	5/8 - 11	M16	0.49 lbs
H8	HS-STB-08-*	7.750 in. (197 mm)	5.750 in. (146 mm)	1.500 in. (38 mm)	3/4 - 10	M20	1.15 lbs
H9	HS-STB-09-*	9.188 in. (233 mm)	7.000 in. (178 mm)	1.750 in. (44 mm)	7/8 - 9	M24	1.65 lbs
H10	HS-STB-10-*	12.000 in. (305 mm)	9.500 in. (241 mm)	2.250 in. (57 mm)	1-1/8 - 7	M30	2.50 lbs

***Materials:**

C	Unplated Carbon Steel (Standard Material)
T	AISI 304 Grade Stainless Steel (A2 - 1.4301/1.4305)
X	AISI 316 Grade Stainless Steel (A4 - 1.4401/1.4571)
Z	Zinc Plated Steel (Special Order)

Strut Clip Nut [UCN]

The UCN nut is used to adapt Behringer's pipe clamps to standard strut channel. This allows for even greater flexibility and mounting possibilities.



Group	Order Number	L	W	H1	H2	Thread
H3 - H5	HS-UCN-345-*	1.500 in. (38 mm)	0.866 in. (22 mm)	0.728 in. (18.5 mm)	1.083 in. (2.75 mm)	3/8 - 16 UNC
H6	HS-UCN-06-*	-	-	-	-	-

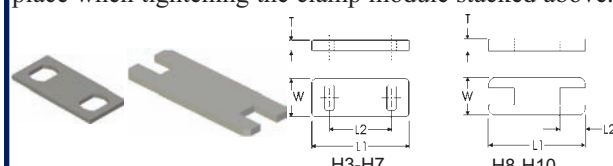
***Materials:**

C	Unplated Carbon Steel (Special Order)
T	AISI 304 Grade Stainless Steel (A2 - 1.4301/1.4305)
X	AISI 316 Grade Stainless Steel (A4 - 1.4401/1.4571)
Z	Zinc Plated Steel (Standard Material)

Weight Ea.: Approx. 0.2 lbs.

Safety Plate [SAF]

The Safety plate is used in conjunction with the STB stacking bolts above. This ensures that the stacking bolts will remain locked in place when tightening the clamp module stacked above.



Group	Order Number	L1	L2	W	T	Weight Ea.
H3	HS-SAF-03-*	2.281 in. (58 mm)	1.300 in. (33 mm)	1.219 in. (31 mm)	0.125 in. (3.2 mm)	0.06 lbs.
H4	HS-SAF-04-*	2.750 in. (70 mm)	1.770 in. (45 mm)	1.219 in. (31 mm)	0.125 in. (3.2 mm)	0.08 lbs.
H5	HS-SAF-05-*	3.344 in. (85 mm)	2.360 in. (60 mm)	1.219 in. (31 mm)	0.125 in. (3.2 mm)	0.11 lbs.
H6	HS-SAF-06-*	4.531 in. (115 mm)	3.530 in. (90 mm)	1.625 in. (41 mm)	0.188 in. (4.8 mm)	0.31 lbs.
H7	HS-SAF-07-*	5.938 in. (151 mm)	4.812 in. (122 mm)	1.125 in. (29 mm)	0.188 in. (4.8 mm)	0.58 lbs.
H8	HS-SAF-08-*	8.000 in. (203 mm)	1.313 in. (33 mm)	2.938 in. (75 mm)	0.375 in. (9.5 mm)	1.43 lbs.
H9	HS-SAF-09-*	9.750 in. (248 mm)	1.750 in. (44 mm)	3.438 in. (87 mm)	0.375 in. (9.5 mm)	2.17 lbs.
H10	HS-SAF-10-*	12.438 in. (316 mm)	1.906 in. (48 mm)	4.438 in. (113 mm)	0.250 in. (6.3 mm)	0.00 lbs.

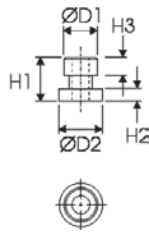
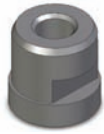
***Materials:**

C	Unplated Carbon Steel (Standard Material)
T	AISI 304 Grade Stainless Steel (A2 - 1.4301/1.4305)
X	AISI 316 Grade Stainless Steel (A4 - 1.4401/1.4571)
Z	Zinc Plated Steel (Special Order)

Rail Nuts and Rail Selection and Dimensions

Rail Nut [RCN]

The rail nuts allow mounting of the heavy series clamps to the RAL-4 Heavy series rail.



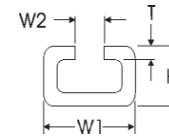
Group	Order Number	ØD1	ØD2	H1	H2	H3	UNC Thread	Metric Thread
H3-H5	HS-RCN-99-*-RN7	0.698 in. (17.8 mm)	0.750 in. (19 mm)	0.750 in. (19 mm)	0.297 in. (7.6 mm)	0.219 in. (5.6 mm)	3/8 - 16 UNC	M10
H6	HS-RCN-99-*-RN8	0.778 in. (19.8 mm)	0.875 in. (22.2 mm)	0.813 in. (20.7 mm)	0.359 in. (9.1 mm)	0.219 in. (5.6 mm)	7/16 - 14 UNC	M12
H7	HS-RCN-99-*-RN9	0.938 in. (23.8 mm)	1.125 in. (28.6 mm)	1.700 in. (43.2 mm)	1.075 in. (27.3 mm)	0.375 in. (9.5 mm)	5/8 - 11 UNC	M16
H8-H10	N/A	-	-	-	-	-	-	-

***Materials:**

C	Unplated Carbon Steel (Standard Material)
T	AISI 304 Grade Stainless Steel (A2 - 1.4301/1.4305)
X	AISI 316 Grade Stainless Steel (A4 - 1.4401/1.4571)
Z	Zinc Plated Steel (Special Order)

Mounting Rail [RAL-4] DIN 3015-2

Behringer's Heavy series RAL-4 is used to mount clamps with heavy rail nuts. This allows clamps from multiple groups to be mounted to the same rail. The RAL-4 conforms to the DIN 3015-2 specification.



Group	Order Number	W1	W2	L	T	H
H3-H7	HS-RA4-99-*-xxx	1.563 in. (40 mm)	0.469 in. (12 mm)	See Below	0.188 in. (5 mm)	0.875 in. (22 mm)

***Materials:**

C	Unplated Carbon Steel (Standard Material)
T	AISI 304 Grade Stainless Steel (A2 - 1.4301/1.4305)
X	AISI 316 Grade Stainless Steel (A4 - 1.4401/1.4571)
Z	Zinc Plated Steel (Special Order)

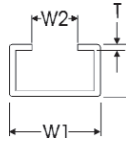
xxx Length:

2ME	78 in. (2 m) Length (Standard Length)	14.5 lbs ea.
1ME	39 in. (1 m) Length (Special Length)	7.25 lbs ea.

Custom sizes available on request

Mounting Rail [RAL-2]

Behringer's proprietary Heavy series RAL-2 is used to mount clamps with Weld Plates (SWP). The weld plate slides into the rail, eliminating the need for rail nuts. The RAL-2 fits Groups H3-H5 weld plates.



Group	Order Number	W1	W2	L	T	H
H3-H5	HS-RA2-99-*-xxx	1.750 in. (44.4 mm)	0.750 in. (19 mm)	See Below	0.125 in. (3 mm)	0.750 in. (19 mm)

***Materials:**

C	Unplated Carbon Steel (Standard Material)
T	AISI 304 Grade Stainless Steel (A2 - 1.4301/1.4305)
X	AISI 316 Grade Stainless Steel (A4 - 1.4401/1.4571)
Z	Zinc Plated Steel (Special Order)

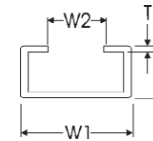
xxx Length:

6FT	72 in. (1829 mm) Length (Standard Length)	8 lbs. each
3 FT	36 in. (914 mm) Length (Special Length)	4 lbs. each

Custom sizes available on request

Mounting Rail [RAL-3]

Behringer's proprietary Heavy series RAL-3 is used to mount clamps with Weld Plates (SWP). The weld plate slides into the rail, eliminating the need for rail nuts. The RAL-3 fits Group H6 weld plates only.



Group	Order Number	W1	W2	L	T	H
H6	HS-RA3-99-*-xxx	2.125 in. (54 mm)	1.000 in. (25.4 mm)	See Below	0.125 in. (3 mm)	0.813 in. (20.7 mm)

***Materials:**

C	Unplated Carbon Steel (Standard Material)
T	AISI 304 Grade Stainless Steel (A2 - 1.4301/1.4305)
X	AISI 316 Grade Stainless Steel (A4 - 1.4401/1.4571)
Z	Zinc Plated Steel (Special Order)

xxx Length:

6FT	72 in. (1829 mm) Length (Standard Length)	9.6 lbs. ea.
3 FT	36 in. (914 mm) Length (Special Length)	4.8 lbs. ea.

Custom sizes available on request

Chart 1 Chart 2 Chart 3 Chart 4 Chart 5
SH T 61900 - PP - MET

① Clamp Configuration	
SH	Single Heavy Complete Clamp for Weld Mounting
DH	Double Heavy Complete Clamp for Weld Mounting
R7H	Complete Clamp for mounting to RAL-4 (H3-H5)
R8H	Complete Clamp for mounting to RAL-4 (H6)
R9H	Complete Clamp for mounting to RAL-4 (H7)
UH	Complete Clamp for mounting to Strut Channel
HSK	Heavy Stacking Kit

② Hardware Materials	
Omit	Untreated Carbon Steel
T	AISI 304 Stainless Steel (A2 - 1.4301/1.4305)
X	AISI 316/316Ti Stainless Steel (A4 - 1.4401/1.4571)
Z	Electro-Zinc Dichromate Plating

④ Clamp Pair Material	
PP	Polypropylene
SP	Santoprene
AL	Aluminum

⑤ Threads	
Omit	UNC Thread (Standard)
MET	Metric Thread

③ Clamp Group and Size					
Behringer Group	Pipe Size	Tube Size	Metric OD (mm)	Imperial OD (Inch)	Clamp Halves
H3		1/4	6.4	0.250	3025
		3/8	9.5	0.375	3038
	1/8		10.0	0.405	30405
		1/2	12.7	0.500	3050
	1/4		13.7	0.540	30540
		5/8	16.0	0.620	3062
	3/8		17.1	0.675	30675
H4		3/4	19.0	0.750	4075
			20.0	0.790	4079
	1/2		21.3	0.840	40840
		7/8	22.2	0.870	4087
		1	25.4	1.000	4100
	3/4		26.7	1.050	41050
			30.0	1.181	41181
H5		1 1/4	32.0	1.250	5125
	1		33.4	1.315	51315
		1 1/2	38.1	1.500	5150
	1 1/4		42.2	1.660	51660
H6	1		33.4	1.315	61315
	1 1/4		42.2	1.660	61660
		1 3/4	44.5	1.750	6175
	1 1/2		48.3	1.900	61900
		2	50.8	2.000	6200
		2 1/8	54.0	2.125	62125
		2 1/4	57.2	2.250	6225
	2		60.3	2.375	62375
		2 1/2	63.5	2.500	6250
		2 3/4	69.9	2.750	6275
H7		2 3/4	69.9	2.750	7275
	2 1/2			2.875	72875
		3	76.2	3.000	7300
	3	3 1/2	88.9	3.500	7350
H8		3 1/2	88.9	3.500	83500
		4		4.000	8400
	4	4 1/2		4.500	8450
		5		5.000	8500
H9		5		5.000	9500
		5 1/4		5.250	9525
	5			5.563	95563
		6		6.000	9600
H10				6.625	96625
	6			6.625	06625
		8		8.000	0800
	8			8.625	08625

Ordering Examples

SH

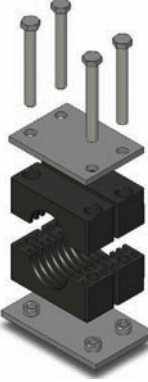
Single Complete Clamp for Weld Mounting



Consists of:
 2 HEX Bolts
 1 SCP Cover Plate
 1 CLH Clamp Set (2 halves)
 1 SWP Weld Plate

DH

Double Complete Clamp for Weld Mounting



Consists of:
 4 HEX Bolts
 1 DCP Cover Plate
 2 CLH Clamp Sets (4 halves)
 1 DWP Double Weld Plate

**R7H
R8H**


Single Complete Clamp for Rail Mounting



Consists of:
 2 HEX Bolts
 1 SCP Cover Plate
 1 CLH Clamp Set (2 halves)
 2 RCN Rail Nuts

R9H

Single Complete Clamp for Rail Mounts
Group H7 Only



Consists of:
 2 HEX Bolts
 1 SCP Cover Plate
 1 CLH Clamp Set (2 halves)
 1 SPL Spacer Plate
 2 RCN-9 Rail Nuts

HSK


Complete Stacking Kit



Consists of:
 2 STB Stacking Bolts
 1 SAF Safety Plate
 1 CLH Clamp Set (2 halves)

UH

Single Complete Clamp for Strut Mounting



Consists of:
 2 HEX Bolts
 1 SCP Cover Plate
 1 CLH Clamp Set (2 halves)
 2 UCN Strut Nuts