

Show Manager OE™

Show Manager OE *iX* Range

Ref. SMW-OE

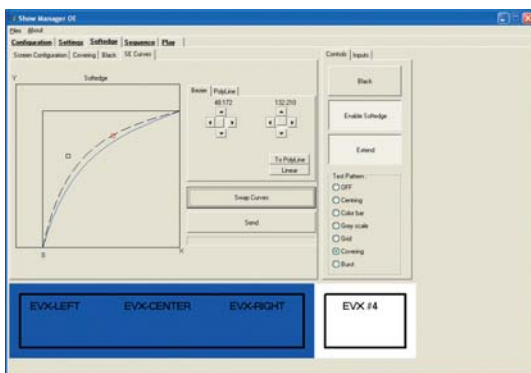
- > Application Specific Software to Manage Simultaneously up to 16 Display Devices with *iX* Switchers and a PC
- > Compatible with the Di-VentiX, EventiX, CentriX, NatiX and the Octo Range

Download
at www.analogway.com:
- product spec sheets in pdf
- latest product upgrades
- latest control software

Show Manager Open Edition™ by Analog Way is specifically designed for large events that require the control of up to 16 display devices. This software can simultaneously manage up to 16 **EventiX™** from a single PC, program sequences visually and intuitively, and switch from one source to another with their associated transitions. This programming does not require any technical skills. Once the sequences are recorded, the video or computer images can be displayed as a time line on the large screen, using various effects such as PIP, wipes, fading, titling, mixing or seamless switching. Fully automated, **Show Manager OE** is easy to use and offers amazing possibilities to make your events unforgettable.

MINIMUM REQUIREMENTS:

- 1 Parallel port or USB
- 1 RS232 serial port per EventiX connected. Contact us for PC RS232 extension or Ethernet connection
- 1 CD-Rom drive
- Windows XP



AUTOMATION PROCEDURE

STEP 1

A sequence is a set of effects that can be recorded, automatically managed and displayed on the display device of your choice. Determine the number of effect patterns needed in the presentation, assign them to the proper display, and record the settings as "sequence" data.

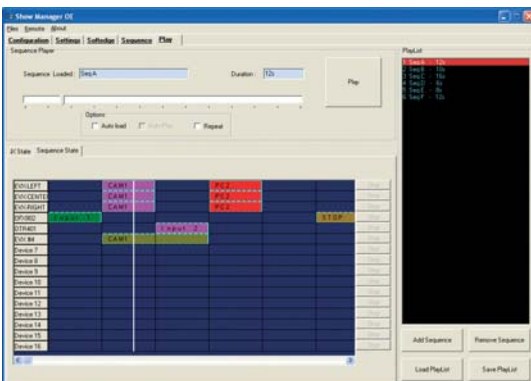
STEP 2

All the sequences recorded can be included in the "play list" menu before execution (the order can be changed if necessary). The list of sequences can be saved for future events.

STEP 3

Sequences can be played in manual or automatic mode by clicking on the "play" button, and can be momentarily interrupted at any time. Depending on your application, you may want to select several "play options" offered by **Show Manager OE**:

- "Repeat Button" to display the same sequence in a loop,
- "Auto Load" to start the next sequence at the end of the previous one,
- "Auto Play" to play all the sequences included in the play list.



REFERENCE

Show Manager Open Edition: SWM-OE

PACKAGES

SMCBx2: 2 x Cross Blender (CBD-UP) + 1 Show Manager Open Edition (SWM-OE)

SMCBx3: 3 x Cross Blender (CBD-UP) + 1 Show Manager Open Edition (SWM-OE)



Cross Blender™

Cross Blender

iX Range

Ref. CBD-UP

- > Horizontal or Vertical Edge Blending Add-on
- > Creation of a Vertical or Horizontal Wide Screen
- > Full Adjustment of Overlapping Area
- > Adjustment of the Brightness Level of the Projectors on the Overlapping Regions

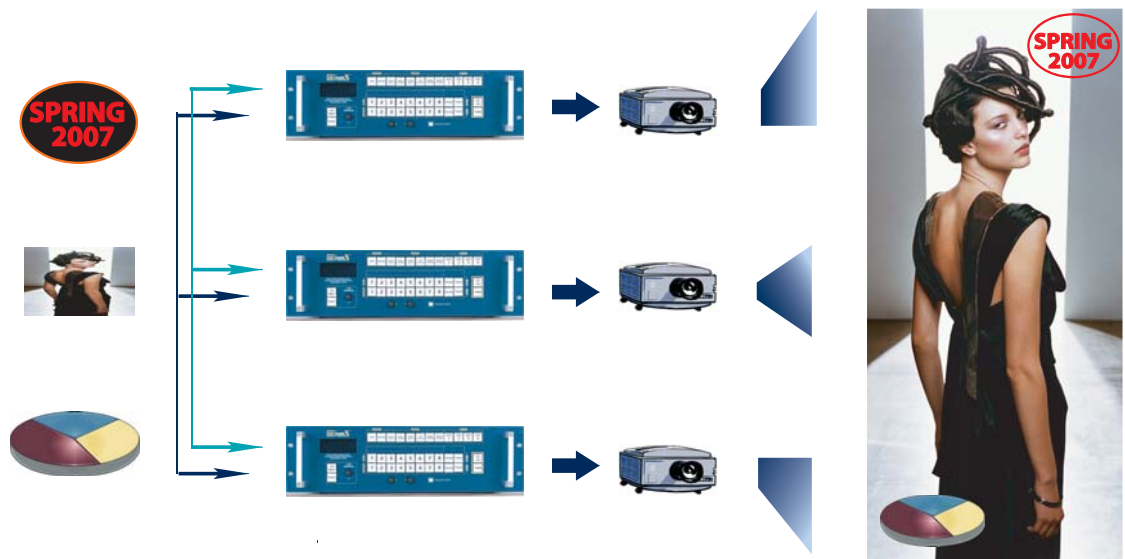
Download

at www.analogway.com:

- product spec sheets in pdf
- latest product upgrades
- latest control software

Cross Blender™ by **Analog Way** can edge blend up to 16 video projectors with 16 **Di-VentiX™** or **EventiX™**, either vertically or horizontally. Video and Computer background sources, including those in the PIP windows, are processed in real time and with no visible delay even when using a live camera. All functions can be independently configured to your specific needs.

Cross Blender enables, in real time, to cut, blend and position the video or computer images on overlapping regions, with no additional hardware. It enables background image and PIP cut out and is very quickly and easily installed.



REFERENCE

Cross Blender: CBD-UP

PACKAGES

SMCBx2 = 2 x Cross Blender (CBD-UP) +
1 Show Manager Open Edition (SWM-OE)

- SMCBx3 = 3 x Cross Blender (CBD-UP)
+ 1 Show Manager Open Edition (SWM-OE)

Specifications subject to change without notice

ANALOG WAY

USA and Canada
ANALOG WAY Inc
Tel.: 212 269 1902
Fax.: 212 269 1943
email: salesusa@analogway.com

Europe, Africa, South America and Middle-East
ANALOG WAY FRANCE
Tel.: 331 64 47 16 03
Fax.: 331 64 47 14 73
email: saleseuro@analogway.com

Asia and Asia Pacific
ANALOG WAY Pte Ltd
Tel.: 65 62 92 58 00
Fax.: 65 62 92 52 05
email: salesasia@analogway.com