

Audio/Video Solutions For System Integrators



**High Performance
Cabling Products
for Audio/Video
Applications**

For all of your
A/V applications,
it makes sense to
rely on Belden!

Audio/Video Solutions to Meet Every Need

In today's electronic age, demand for high-performance audio/visual communications has become more prevalent than ever before. As a result, the need has increased for professional quality audio/video cabling systems and components spanning a broad spectrum of applications, from relatively simple to highly sophisticated, integrated broadband and multimedia solutions.

Belden® is the one cabling manufacturer with the innovative products, technical expertise and worldwide distribution network capable of fulfilling any and all of your A/V requirements. Typical applications include:

- Corporate offices and campuses
 - Government offices, military bases and facilities
 - Schools and universities
 - Hotels and convention centers
 - Hospitals and health care facilities
 - Retail malls, department and specialty stores
 - Sports stadiums and arenas
 - Gaming casinos
- Houses of worship and public auditoriums
 - Entertainment venues such as concert halls, nightclubs and theaters
 - Rental and staging of indoor or outdoor concerts and public events

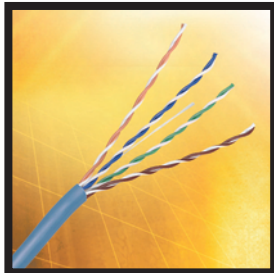
Over the years, Belden products have earned global acclaim for their precision engineering, rugged construction, high quality performance and rock-solid reliability. In the professional broadcast industry, for example – where downtime is not an option – Belden Brilliance® cables have for decades been the Number One choice of production and post-production professionals, as well as major broadcasting and cable networks.

Belden adheres to the same high standards and level of excellence for customers serving the public A/V and live performance marketplace. So when it comes to selecting cabling solutions for your A/V applications, it makes sense to rely on Belden – the most trusted brand in the industry.





Belden Products for Diverse Audio/Video Applications



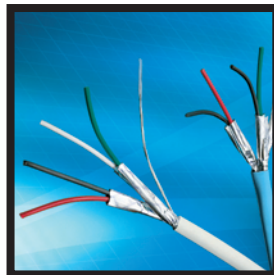
IBDN™ Networking/LAN Cable



Mini Hi-res Component Video Cables



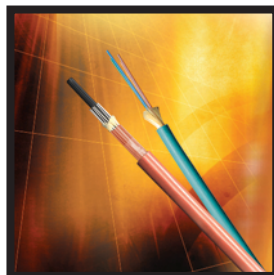
Banana Peel® Precision Video



New Gen STP Plenum-rated Cables



Brilliance AES/EBU Digital/Audio Cables



FiberExpress Fiber Optic Cables



Banana Peel Projector Cables



Audio/Video Enclosures and Racks

TABLE OF CONTENTS

	Page No.
Speaker Cables	4
Audio and Control Cables	5
Audio, Video and Control Cables	6
Networking /LAN Cables	8
Coaxial Cables	8
RGB and S-Video Cables	9
Fiber Optic Cables	11
Sales Contacts	12

In addition to a comprehensive line of Audio/Video cables, Belden offers thousands of cabling, connectivity and cable management solutions for:

- Enterprise Networking
- Wireless Networking
- Industrial Automation Et Control
- Home Computer, A/V and Entertainment Systems

No other cable manufacturer in the world today offers so many high-quality, cost-effective products and solutions to fulfill all of your communications needs and applications.

Only Belden is Sending All the Right Signals™

For more information on our high-quality A/V Solutions, please call **1.800.BELDEN.1**.

To locate a Belden sales representative or Belden distributor near you, visit our Website at www.belden.com or call **1.800.BELDEN.1**.

Speaker Cables

Belden offers speaker cables for a wide range of applications, including plenum, indoor/outdoor, direct burial, and commercial and professional installations. All cables feature Electrolytic Tough Pitch (ETP) pure virgin copper construction (ASTM B3 and B8), except for OFC Direct Burial speaker cable which utilizes ASTM B170 oxygen-free copper.

2/C Speaker Cables – Non-plenum	
Part No.	Description
5500UE	2/C 22 AWG 7 strand BC, PP Insulation, PVC Jacket, CMR
8442	2/C 22 AWG 7 strand TC, PVC Insulation and Jacket, CMG, Heavy Duty
9151	2/C 22 AWG 7 strand, open twist style, (1) tinned, (1) bare, VW-1
5400UE	2/C 20 AWG 7 strand BC, PP Insulation, PVC Jacket, CMR
8205	2/C 20 AWG 7 strand TC, PVC Insulation and Jacket, CMG, Heavy Duty
8649	2/C 20 AWG 7 strand, Zip style, (1) tinned, (1) bare, VW-1
5300UE	2/C 18 AWG 7 strand BC, PP Insulation, PVC Jacket, CMR
8461	2/C 18 AWG 7 strand TC, PVC Insulation and Jacket, CMG, Heavy Duty
8460	2/C 18 AWG 7 strand, open twist style, Black, White, VW-1
5200UE	2/C 16 AWG 7 strand BC, PP Insulation, PVC Jacket, CMR
5200UP	2/C 16 AWG 65 strand BC, TP Insulation, PVC Jacket, CM, Flex
1307A	2/C 16 AWG 65 strand OFHC, Low Cap, Direct Burial, PO/PVC Jacket, CMR
8471	2/C 16 AWG 7 strand TC, PVC Insulation and Jacket, CMG, Heavy Duty
8470	2/C 16 AWG 19 strand, open twist style, Black, White, VW-1
9497	2/C 16 AWG 19 strand, open twist style, Black, Orange, VW-1
5100UE	2/C 14 AWG 7 strand BC, PP Insulation, PVC Jacket, CMR
5100UP	2/C 14 AWG 42 strand BC, TP Insulation, PVC Jacket, CL3, Flex
1309A	2/C 14 AWG 105 strand OFC, Low Cap, Direct Burial, PO/PVC Jacket, CMR
8473	2/C 14 AWG 7 strand TC, PVC Insulation and Jacket, CL3, Heavy Duty
5000UE	2/C 12 AWG 19 strand BC, PP Insulation, PVC Jacket, CMR
5000UP	2/C 12 AWG 65 strand, BC, TP Insulation, PVC Jacket, CL3, Flex
1311A	2/C 12 AWG 168 strand OFHC, Low Cap, Direct Burial, PO/PVC Jacket, CMR
8477	2/C 12 AWG 7 strand TC, PVC Insulation and Jacket, CL3R, Heavy Duty
5T00UP	2/C 10 AWG 65 strand BC, TP Insulation, PVC Jacket, CL2
1313A	2/C 10 AWG 259 strand OFHC, Low Cap, Direct Burial, PO/PVC Jacket, CMR

2/C Speaker Cables – Plenum	
Part No.	Description
1863A	2/C 18 AWG 19 strand BC, LS-PVC Insulation, open twist, CL2P
6300UE	2/C 18 AWG 7 strand BC, LS-PVC Insulation and Jacket, CMP
1862A	2/C 16 AWG 19 strand BC, LS-PVC Insulation, open twist, CL2P
6200UE	2/C 16 AWG 19 strand BC, LS-PVC Insulation and Jacket, CMP
1861A	2/C 14 AWG 19 strand BC, LS-PVC Insulation, open twist, CL2P
6100UE	2/C 14 AWG 19 strand BC, LS-PVC Insulation and Jacket, CL2P
1860A	2/C 12 AWG 19 strand BC, LS-PVC Insulation, open twist, CL2P
6000UE	2/C 12 AWG 19 strand BC, LS-PVC Insulation and Jacket, CL2P
6T00UP	2/C 10 AWG 65 strand BC, LS-PVC Insulation and Jacket, CL2P

4/C Speaker Cables – Non-plenum	
Part No.	Description
5202UE	4/C 16 AWG 7 strand BC, PP Insulation, PVC Jacket, CMR
5202UP	4/C 16 AWG 65 strand BC, TP Insulation, PVC Jacket, CM Flex
1308A	4/C 16 AWG 65 strand OFHC, Low Cap, Direct Burial, PO/PVC Jacket, CMR
5102UE	4/C 14 AWG 7 strand BC, PP Insulation, PVC Jacket, CMR
5102UP	4/C 14 AWG 42 strand BC, TP Insulation, PVC Jacket, CL3, Flex
1310A	4/C 14 AWG 105 strand OFHC, Low Cap, Direct Burial, PO/PVC Jacket, CMR
5002UE	4/C 12 AWG 19 strand BC, PP Insulation, PVC Jacket, CMR
5202UP	4/C 12 AWG 42 strand BC, TP Insulation, PVC Jacket, CL3, Flex
1312A	4/C 12 AWG 168 strand OFHC, Low Cap, Direct Burial, PO/PVC Jacket, CMR

4/C Speaker Cables – Plenum	
Part No.	Description
6302UE	4/C 18 AWG 7 strand BC, LS-PVC Insulation and Jacket, CMP
6202UE	4/C 16 AWG 19 strand BC, LS-PVC Insulation and Jacket, CMP
6102UE	4/C 14 AWG 19 strand BC, LS-PVC Insulation and Jacket, CL2P
6002UE	4/C 12 AWG 19 strand BC, LS-PVC Insulation and Jacket, CL2P

BC = Bare Copper • CL2 = Class 2 • CL2P = Class 2 Plenum • CL3 = Class 3 • CL3R = Class 3 Riser
 • CM = Communications Rated • CMG = Communications General Purpose • CMP = Plenum Rated
 • CMR = Riser Rated • LS-PVC = Low Smoke PVC • OFHC = Oxygen-free High-conductivity
 • PO = Polyolefin • PO/PVC = Polyolefin insulation/PVC overall jacket • PP = Polypropylene
 VW1 = Vertical flame test-1 • TC = Tinned Copper • TP = Thermoplastic

Belden offers several other cable types for all installations.



Audio and Control Cables

Belden's wide array of audio cables range from high-performance, low-capacitance and digital audio types for optimum signal delivery, to cables manufactured to basic industry specifications for commercial use, short runs and non-mission critical applications. Belden pioneered the Easy Strip

foil bonded to the jacket for ease of installation and now offers this feature on digital cables, plenum cables and 2-pair versions. Many cables are suitable for RS-422 and RS-485 applications. Consult the Belden Catalog for a full listing.

2/C Shielded Audio & Control Cables – Non-plenum		
Part No.	Description	Key Attributes
5660FT	1 STP 24 AWG solid TC, Low Cap FPE, FS + TC DW PVC, CMR	100-ohm Low Cap
1883A	1 STP 24 AWG 31 pF/ft, FS, 24 AWG DW PP/PVC, CMR	Available in 8 colors
5500FE	1 STP 22 AWG BC, FS + TC DW TP/PVC, CMR	Security grade
1503A	1 STP 22 AWG TC, 53 pF/ft, FS, 24 AWG TC DW PVC/PVC, CM	PVC Insulation, flexible jacket
1266A	1 STP 22 AWG 30 pF/ft, FS, 24 AWG DW PP/PVC, CM	Flexible and CM
9451	1 STP 22 AWG 35 pF/ft, FS, 22 AWG DW PP/SR-PVC, CMR	EZ foil strips with jacket
8451	1 STP 22 AWG 34 pF/ft, FS, 22 AWG DW paper, PP/SR-PVC, CMR	Paper; easy jacket strip
8761	1 STP 22 AWG 24 pF/ft, FS, 22 AWG DW PE/PVC, CM	PE Insulation, Low Cap
9461	1 STP 22 AWG 24 pF/ft, FS, 22 AWG DW PE/PVC, CM	PE Insulation, Low Cap
5540FT	1 STP 22 AWG str. TC, Low Cap FPE, FS + TC DW PVC, CMR	Brown jacket 100-ohm Low Cap
5520FE	1 STP 22 AWG solid BC FS, 24 AWG DW PP/PVC, CMR	Solid conductors
8450	1 STP 22 AWG solid TC 40 pF/ft, FS, 22 AWG solid DW PP/PVC, CM	Solid conductors
5400FE	1 STP 20 AWG BC, 56 pF/ft, FS + TC DW TP/PVC, CMR	Security grade
8762	1 STP 20 AWG 27 pF/ft, FS, 20 AWG DW PE/PVC, CM	PE Insulation
5300FE	1 STP 18 AWG BC, 65 pF/ft, FS+ TC DW TP/PVC, CMR	Security grade
5340FT	1 STP 18 AWG str. TC, Low Cap FPE, FS + TC DW PVC, CMR	100-ohm Low Cap FFEP
8760	1 STP 18 AWG 30 pF/ft, FS, 20 AWG DW PE/PVC, CM	Low Capacitance, PE Insulation, Top seller
5200FE	1 STP 16 AWG BC, 76 pF/ft, FS + TC DW TP/PVC, CMR	Security grade
8719	1 STP 16 AWG 23 pF/ft, FS, 18 AWG DW PE/PVC, CM / CL2	Low Capacitance, PE Insulation
5100FE	1 STP 14 AWG BC, 83 pF/ft, FS + TC DW TP/PVC, CL3R	Security grade, CL3R and FPLR
8720	1 STP 14 AWG 24 pF/ft, FS, 16 AWG DW PE/PVC, CL2	Low Capacitance, PE Insulation
5000FE	1 STP 12 AWG BC, 83 pF/ft, FS + TC DW TP/PVC, CL3R	Security grade, CL3R and FPLR
8718	1 STP 12 AWG 25 pF/ft, FS, 14 AWG DW PE/PVC, CL2	Low Capacitance, PE Insulation

2/C Shielded Audio & Control Cables – Plenum		
Part No.	Description	Key Attributes
6660FT	1 STP 24 AWG solid TC, Low Cap FFEP, FS + TC DW LS-PVC, CMP	Brown Jacket, 100-ohm Low Cap FFEP
6500FE	1 STP 22 AWG BC, 55 pF/ft, FS + TC DW LSPVC/LSPVC, CMP	Security grade, LS-PVC Insulation
6540FT	1 STP 22 AWG str TC, Low Cap FFEP, FS + TC DW LS-PVC, CMP	Brown jacket, 100-ohm Low Cap FFEP
6500FC	1 STP 22 AWG BC FEP Insulation, FS + DW FEP Insulation, CMP	Bare Copper; 45 pF/ft.
9451P	1 STP 22 AWG 35 pF/ft, FS + TC DW, FEP Insulation, CMP	Foil strips with jacket, colors
82761	1 STP 22 AWG 35 pF/ft, FS + TC DW, FEP Insulation, CMP	Easy jacket strip, Heavy-duty, Low Capacitance
87761	1 STP 22 AWG 35 pF/ft, FS + TC DW, FEP Insulation, red PVDF Jacket, CMP	Plenum-rated use, 150° C
88761	1 STP 22 AWG 35 pF/ft, FS + TC DW, FEP Insulation, red FEP Jacket, CMP	Plenum-rated, 200° C
6400FE	1 STP 20 AWG BC, 56 pF/ft, FS + TC DW, CMP	Security grade LS-PVC Insulation
6400FC	1 STP 20 AWG BC, FEP insulation FS + TC DW, CMP	FEP Insulation
6300FE	1 STP 18 AWG BC, 70 pF/ft, FS + TC DW, CMP	Security grade LS-PVC Insulation
6340FT	1 STP 18 AWG str. TC, Low Cap FFEP, FS + TC DW LS-PVC, CMP	100-ohm Low Cap FFEP
6300FC	1 STP 18 AWG BC FEP Insulation, FS + DW FEP Insulation, CMP	FEP Insulation
82760	1 STP 18 AWG TC 51 pF/ft, FS, 20 AWG TC DW, FEP Insulation, CMP	Tinned Copper; Mid Cap
6200FE	1 STP 16 AWG BC, 81.5 pF/ft, FS, 18 AWG TC DW, CMP	LS-PVC Insulation
6100FE	1 STP 14 AWG BC, 85 pF/ft, FS, 16 AWG TC DW CL2P	LS-PVC Insulation
6000FE	1 STP 12 AWG BC, 97 pF/ft, FS, 16 AWG TC DW CL2P	LS-PVC Insulation

BC = Bare Copper • CL2 = Class 2 • CL2P = Class 2 Plenum • CL3 = Class 3 • CL3R = Class 3 Riser
 • CM = Communications Rated • CMG = Communications General Purpose • CMP = Plenum Rated
 • CMR = Riser Rated • DW = Drain Wire • FFEP = Foam FEP • FPE = Foam PE • FPLR = Power Limited, Fire Protective Signaling Circuit Cable, Riser rated • FS = Foil Shield • LS-PVC = Low Smoke PVC
 • OFHC = Oxygen-free High-conductivity • PO = Polyolefin • PO/PVC = Polyolefin/PVC • PP = Polypropylene
 • STP = Shielded Twisted Pair • STR = Stranded • TC = Tinned Copper • TP = Thermoplastic
 • VW1 = Vertical flame test-1

Belden offers several other cable types for all installations.

Audio and Control Cables

(continued)

Audio & Control Dual Pair / 2 Shielded Pairs – Non-plenum

Part No.	Description	Key Attributes
5661PT	2 TP 24 AWG sol, FPE Insulation, Low Cap 2 pr / O/A shield, PVC jacket, CMR	100-ohm, Low Cap, Unshielded pairs, OAS
1510C	2 STP 24 AWG 31 pF/ft FS, Pairs Jacketed, PO/PVC/PVC jacket, CM	Individual pair jackets, Audio Snake
8723	2 STP 22 AWG, ea. pr FS, shared 24 AWG DW, PP/PVC jacket, CM	Compact design
9451D	2 STP 22 AWG, Individual jackets, Dual 9451, Zip cord design, CMR	Siamese, PP Insulation, 22 AWG DWs
1504A	2 STP 22 AWG, Individual jackets, Dual 1503A, Zip cord design, CM	Siamese, PVC Insulation, 24 AWG DWs, Flex
5541FE	2 TP 22 AWG, PVC Insulation / pairs cabled, O/A shield, PVC jacket, CMR	Unshielded pairs, OAS
5541PT	2 TP 22 AWG str, FPE Insulation, Low Cap 2 pr / O/A shield, PVC jacket, CMR	100-ohm, Low Cap, Unshielded pairs, OAS
1815R	2 STP 22 AWG 31 pF/ft, FS, Pairs Jacketed PO/PVC/PVC jacket, CMR	Individual pair jackets, riser-rated; snake
5341PT	2 TP 18 AWG str, FPE Insulation, Low Cap 2 pr / O/A shield, PVC jacket, CMR	100-ohm, Low Cap, Unshielded pairs, OAS

Analog Audio & Control Dual Pair / 2 Shielded Pairs – Plenum

Part No.	Description	Key Attributes
6661PT	2 TP 24 AWG sol, FFEP Insulation, Low Cap 2 pr / O/A shield, PVC jacket, CMP	100-ohm, Low Cap, Unshielded pairs, OAS
6541FE	2 TP 22 AWG, LSPVC Insulation/pairs cabled, O/A shield, LSPVC jacket, CMP	Unshielded pairs, OAS
6541PT	2 TP 22 AWG str, FFEP Insulation, Low Cap 2 pr / O/A shield, PVC jacket, CMP	100-ohm, Low Cap, Unshielded pairs, OAS
6541PA	2 STP 22 AWG 27.5 pF/ft, FS, FEP Insulation, CMP	Shielded pairs, FEP Insulation
1325A	2 STP 22 AWG Low Cap FS, LS-PVC Insulation, shared DW, CMP	Shielded pairs, colors
82723	2 STP 22 AWG 35 pF/ft, FS, FEP Insulation, shared DW, CMP	Shielded pairs, FEP Insulation
87723	2 STP 22 AWG 35 pF/ft, FS, FEP Insulation, red PVDF jacket, CMP	Plenum-rated, 150° C
88723	2 STP 22 AWG 35 pF/ft, FS, FEP Insulation, red FEP jacket, CMP	Plenum-rated, 200° C
9451DP	2 STP 22 AWG, Individual jackets, Dual 9451P, Zip cord design, CMP	Siamese, FEP Insulation, 22 AWG DWs
6341PT	2 TP 18 AWG str, FFEP Insulation, Low Cap 2 pr / O/A shield, PVC jacket, CMP	18 AWG Low Cap, 100-ohm Unshielded pairs, OAS
6341PC	2 STP 18 AWG FEP Insulation, LS-PVC jacket, CMP	LS-PVC jacket

DW = Drain Wire • FFEP = Foam FEP • FPE = Foam PE • FPLR = Power Limited, Fire Protective Signaling Circuit Cable, Riser rated • FS = Foil Shield • LS-PVC = Low Smoke PVC • OFHC = Oxygen-free High-conductivity • PO = Polyolefin • PO/PVC = Polyolefin/PVC • PP = Polypropylene • STP = Shielded Twisted Pair • STR = Stranded • TC = Tinned Copper

Belden offers several other cable types for all installations

AXLink™ is a trademark of AXM

Cresnet™ is a trademark of Creston

Audio, Video, and Control Cables

Belden offers standard cables and custom combinations designed for use in a wide range of A/V and control applications, including products for: faceplates for presentation projection, control systems, touch panels, sharing of touch panels, sharing of local sources, control of multiple sources through switches and remote Web browser controls, multiple media runs, bi-directional audio, and audio/video distribution.

Control Systems Cable (for AXLink™ or Cresnet™)

Part No.	Description	Key Attributes
1502R	1 STP 22 AWG Control + 2/C 18 AWG, CMR	22 AWG STP = 100-ohm
1502P	1 STP 22 AWG Control + 2/C 18 AWG, CMP	22 AWG STP = 100-ohm

RGB Miniature High Resolution Composite Cables

6/C RGBHVC + 2 STP 22 AWG Projector Composite

Part No.	Description	Key Attributes
5788AV	(6) 25 AWG Solid RGBHVC + 2 STP 22 AWG Audio/Control, CMR	Banana Peel construction
6788AV	(6) 25 AWG Solid RGBHVC + 2 STP 22 AWG Audio/Control, CMP	Banana Peel construction

14/C AV Control

Part No.	Description	Key Attributes
1279R* (+)	(5) 25 AWG Solid RGBHV, CMR	Riser-rated 14/C AV control
5407FE	9/C 20 AWG Shielded, CMR * or 1281S5 Banana Peel	
1279P* (+)	(5) 25 AWG Solid RGBHV, CMP	Plenum-rated 14/C AV control
6407FE	9/C 20 AWG Shielded, CMP * or 1281S5 Banana Peel	

18/C AV Control

Part No.	Description	Key Attributes
1280R* (+)	(6) 25 AWG Solid RGBHVC, CMR	CMG-rated 18/C AV control
9504* (+)	(4) 24 AWG TP, OAS, CMG	
5402UE	4/C 20 AWG, CMR * or 1281S6 Banana Peel * or 1408R (4)24 AWG STP	
1280P* (+)	(6) 25 AWG Solid RGBHVC, CMP	Plenum-rated 18/C AV control
82504* (+)	(4) 24 AWG TP, OAS, CMP	
5402UE	4/C 20 AWG, CMP * or 1282S6 Banana Peel * or 6543PA - (4)22 AWG STP	

11/C AV Control

Part No.	Description	Key Attributes
SPECIAL	3 Video + 4 UTP NanoSkew® (3) 1282P + (1) 7987P	3V + Low skew UTP, Plenum-rated

6/C AV Control

Part No.	Description	Key Attributes
1807A (+)	(2) 30 AWG 75-ohm Video (S-Video Siamese)	S-Video
5400FE (+)	2/C 20 AWG Shielded, CMR	2/C 20 AWG control
5100FE	2/C 14 AWG Shielded, CMR	2/C 14 AWG control
7700A (+)	(2) 30 AWG 75-ohm Video (S-Video Siamese), CMP	S-Video
6400FE (+)	2/C 20 AWG Shielded, CMP	2/C 20 AWG control
6100FE	2/C 14 AWG Shielded, CMP	2/C 14 AWG control



Audio, Video, and Control Cables

(continued)

Control & Audio Cables, Multi-Conductor/Multi-Pair - Non-plenum

22 AWG Shielded

Part No.	Description
5501FE	3/C 22 AWG Shielded, CMR
5502FE	4/C 22 AWG Shielded, CMR
5504FE	6/C 22 AWG Shielded, CMR
5506FE	8/C 22 AWG Shielded, CMR
5508FE	10/C 22 AWG Shielded, CMR
8723	2 STP 22 AWG TC, CM (2 pr OAS = 5541FE)
8777	3 STP 22 AWG TC, CM (3 pr OAS = 5542FE)
5543PE	4 STP 22 AWG BC, CMR (4 pr OAS = 5543FE)
8778	6 STP 22 AWG TC, CM (6 pr OAS = 5545FE)
1818R	12 STP 22 AWG, Individual Pair Jackets, Snake, CMR

18 AWG Shielded

Part No.	Description
5301FE	3/C 18 AWG Shielded, CMR
5302FE	4/C 18 AWG Shielded, CMR
5304FE	6/C 18 AWG Shielded, CMR
5306FE	8/C 18 AWG Shielded, CMR
5307FE	9/C 18 AWG Shielded, CMR
5341FE	2 TP 18 AWG O/A Shielded, CMR
5342FE	3 TP 18 AWG O/A Shielded, CMR
5343FE	4 TP 18 AWG O/A Shielded, CMR
5345FE	6 TP 18 AWG O/A Shielded, CMR

Commercial Automation & Lighting Control - Non-plenum

Part No.	Description
1502R	1 STP 22 AWG data, plus 2/C 18 power (AXlink™ type)
9841	1 pair DMX, 24 AWG
3105A	1 pair DMX, 22 AWG
9842	2 pair DMX, 24 AWG
3107A	2 pair DMX, 22 AWG

Control & Audio Cables, Multi-Conductor/Multi-Pair - Plenum

22 AWG Shielded

Part No.	Description
6501FE	3/C 22 AWG Shielded, CMP
6502FE	4/C 22 AWG Shielded, CMP
6504FE	6/C 22 AWG Shielded, CMP
6506FE	8/C 22 AWG Shielded, CMP
6508FE	10/C 22 AWG Shielded, CMP
1325A	2 STP 22 AWG, CMP (2 pr OAS = 6541FE)
1326A	3 STP 22 AWG, CMP (3 pr OAS = 6542FE)
6543PA	4 STP 22 AWG, CMP (4 pr OAS = 6543FE)
6545PA	6 STP 22 AWG, CMP (6 pr OAS = 6545FE)
6548PA	12 STP 22 AWG, CMP

20 AWG Shielded

Part No.	Description
6401FE	3/C 20 AWG Shielded, CMP (Non-plenum = 5401FE)
6402FE	4/C 20 AWG Shielded, CMP (Non-plenum = 5402FE)
6441FE	2 pr 20 AWG OAS, CMP (Non-plenum = 5441FE)
6443FE	4 pr 20 AWG OAS, CMP

18 AWG Shielded

Part No.	Description
6301FE	3/C 18 AWG Shielded, CMP
6302FE	4/C 18 AWG Shielded, CMP
6304FE	6/C 18 AWG Shielded, CMP
6306FE	8/C 18 AWG Shielded, CMP
6307FE	9/C 18 AWG Shielded, CMP
6309FE	12/C 18 AWG Shielded, CMP
6341PC	2 STP 18 AWG, CMP (2 pr OAS = 6341FE)
6342PC	3 STP 18 AWG, CMP (3 pr OAS = 6342FE)
6343PC	4 STP 18 AWG, CMP (4 pr OAS = 6343FE)
6345PC	6 STP 18 AWG, CMP (6 pr OAS = 6345FE)

Commercial Automation & Lighting Control - Plenum

Part No.	Description
1502P	1 STP 22 AWG data, plus 2/C 18 power (Axlink™ type)
82841	1 pair DMX, 24 AWG
82842	2 pair DMX, 24 AWG

BC = Bare Copper • O/A Shield = Overall Shield • OAS = Overall Shield • PP = Polypropylene • STP = Shielded Twisted Pair • TC = Tinned Copper • TP = Twisted Pair

Belden offers several other cable types for all installations.

AXlink™ is a trademark of AMX

Networking/LAN Data Cables

Belden offers a comprehensive line of Category 5e and Category 6 UTP cabling solutions to meet virtually every need and budget. A number of our product offerings feature Belden's patented Bonded-Pair construction – a unique advantage ensuring consistently high Installable Performance® both before and after installation.

Category 6, Enhanced 5e and 5e – Non-plenum		
Part No.	Description	Key Attributes
1583A	Cat 5e, 24 AWG solid 4 pair UTP	Solid conductors
7881A	Cat 6, 23 AWG solid 4 pair UTP	Solid conductors
1700A	Cat 5e, 24 AWG solid 4 pair UTP, Bonded-Pairs for stability	Bonded-Pairs
1872A	Cat 6, 23 AWG solid 4 pair UTP, Bonded-Pairs for stability	Bonded-Pairs, Crescent profile
1500A	Enhanced Cat 5e, 24 AWG solid 4 pair UTP	Enhanced 5e
1300A	Cat 5e, Shielded, 24 AWG solid 4 pair UTP, CMX Outdoor Wi-Fi	Shielded, CMX
1533R	Cat 5e, Shielded, 24 AWG solid 4 pair UTP CMR	Colors

Category 6, Enhanced 5e, 5e and 5 – Plenum		
Part No.	Description	Key Attributes
1585A	Cat 5e, 24 AWG solid 4 pair UTP	Solid conductors
7882A	Cat 6, 23 AWG solid 4 pair UTP	Solid conductors
1701A	Cat 5e, 24 AWG solid 4 pair UTP, Bonded-Pairs for stability	Bonded-Pairs
1874A	Cat 6, 23 AWG solid 4 pair UTP, Bonded-Pairs for stability	Bonded Pairs, Crescent profile
1501A	Enhanced Cat 5e, 24 AWG solid 4 pair UTP	Enhanced 5e
1533P	Cat 5e, Shielded, 24 AWG solid 4 pair UTP	Shielded Cat 5

SDI Video Coax/Precision Analog Video Coax

Belden SDI cables are the industry standard in the professional broadcast industry. All Belden SDI Precision Video Coax cables are sweep-tested to 4.5GHz for 1080p HDTV high definition movie and TV production and post-production.

SDI Coax – Non-plenum		
Part No.	Description	Key Attributes
1855A	23 AWG SDI Coax, Mini RG59 size, .159" diameter, CMR	Sweep Tested to 4.5GHz
1505A	20 AWG SDI Coax, RG59 size, .233" diameter, CMR	Sweep Tested to 4.5GHz
1694A	18 AWG SDI Coax, RG6 size, .274" diameter, CMR	Sweep Tested to 4.5GHz
7731A	14 AWG SDI Coax, RG11 size, .400" diameter, CMR	Sweep Tested to 4.5GHz

SDI Coax, Flexible/Patch – CM-rated		
Part No.	Description	Key Attributes
1505F	22 AWG strand SDI Coax, RG59 size, Flex, .242" diameter, CM	Sweep Tested to 3.0GHz
1694F	19 AWG strand SDI Coax, RG6 size, Flex, .276" diameter, CM	Sweep Tested to 4.5GHz

SDI Coax – Plenum		
Part No.	Description	Key Attributes
1855P	23 AWG SDI Coax, Mini RG59 size, .159" diameter, CMP	Sweep Tested to 4.5GHz
1506A	20 AWG SDI Coax, RG59 size, .196" diameter, CMP	Sweep Tested to 4.5GHz
1695A	18 AWG SDI Coax, RG6 size, .234" diameter, CMP	Sweep Tested to 4.5GHz
7732A	14 AWG SDI Coax, RG11 size, .348" diameter, CMP	Sweep Tested to 4.5GHz

DMX = Stage Lighting Cable types for USITT DMX512 applications • O/A = Overall Shield
 • OAS = Overall Shield • STP = Shielded Twisted Pair

Belden offers several other cable types for all installations.



CATV Coax - Broadband Video Distribution - CCTV / CATV / MATV / DBS

Belden offers a wide selection of 75-ohm coax for broadband CATV, baseband CCTV, DBS and MSO applications and 50-ohm wireless transmission coax designed for use in XM™ and Sirius™ satellite radio, as well as wireless microphones, wireless access points, point-to-point in-building and inter-building local wireless networks.

Coax — Non-plenum		
Part No.	Description	Key Attributes
573945	RG 59 (mini) 25 AWG BC 94% BCB CCTV	CM, CCTV
543945	RG 59 20 AWG BC 95% BCB CCTV	CMG, CCTV
9100	RG 59 20 AWG BCCS Foil + 40% ALB CATV swept 5-1000MHz	CM, CATV
533945	RG 6 18 AWG BC 95% BCB CCTV	CM, CCTV
9116	RG 6 18 AWG CCS foil + 60% ALB CATV swept 5MHz-1GHz	CM, CATV
1829A	RG 6 18 AWG CCS foil + 60% ALB DBS swept 950MHz-3.0GHz	CM, CATV
1829AC	RG 6 18 AWG BC foil + 60% ALB DBS swept 950MHz-3.0GHz	CM, CATV, 3GHz
7915A	RG 6 18 AWG BC Duobond® Plus CATV/DBS -125dB shield eff. @ 1GHz ¹	CM, CATV, 3GHz, Duobond Plus
1189A	RG 6 18 AWG CCS AL Quad shield CATV Swept 5MHz-1GHz	CM, CATV
7916A	RG 6 18 AWG BC AL Quad shield CATV/DBS -110dB shld eff. @ 1GHz ¹	CM, CATV, 3GHz

CATV Coax — Plenum		
Part No.	Description	Key Attributes
643948	RG 59 20 AWG BC 95% BCB CCTV	CMP, CCTV
633948	RG 6 18 AWG BC 95% BCB CCTV	CMP, CCTV
9116P	RG 6 18 AWG CCS foil + 60% ALB CATV swept 5MHz-1GHz	CMP, CATVP
1829P	RG 6 18 AWG CCS foil + 60% ALB DBS swept 950MHz-3.0GHz	CMP, CATVP
1189AP	RG 6 18 AWG CCS AL Quad shield CATV swept 5MHz-1GHz	CMP, CATVP
7916AP	RG 6 18 AWG BC AL Quad shield CATV/DBS -110dB shield @1GHz ¹	CM, CATVP, 3GHz

Siamese CCTV Plus 2/C Power or Control/PTZ Cameras

CCTV + Power or Control		
Part No.	Description	Key Attributes
549945	RG 59 20 AWG BC 95% BCB CCTV + 18/2 strand Siamese	Coax + Power
539945	RG 6 18 AWG Sol BC 95% braid + 18/2 strand Siamese	Coax + Power
649948	RG 59 20 AWG BC 95% BCB CCTV + 18/2 strand Siamese	Plenum, Coax + Power
639948	RG 6 18 AWG Sol BC 95% braid + 18/2 strand Siamese	Plenum, Coax + Power

¹ Shielding effectiveness

50-ohm Coax		
Part No.	Description	Key Attributes
8216	RG 174 Type	Industry Standard
8240	RG 58 Type	Industry Standard
82240	RG 58 Plenum	Plenum
9914	RG 8 Type	Industry Standard
7733A	RG 8 Type Plenum	Plenum

RGB Cables—RGBS, RGBHV, and Video Mults / Video Bundles

Belden's 75-ohm RGB Cables offer greater signal integrity and lower loss in high frequency, long-distance transmissions. Our patented Banana Peel unjacketed construction delivers ease of installation and reliable performance in large screen video, HDTV, CAD and special effects video applications.

25 AWG Solid • Jacketed • Mini Hi-Res — Non-plenum		
Part No.	Description	Key Attributes
1277R	(3) 25 AWG Mini Hi-Res Coax, w/overall jacket, CMR .320"	Sweep tested
1278R	(4) 25 AWG Mini Hi-Res Coax, w/overall jacket, CMR .351"	Sweep tested
1279R	(5) 25 AWG Mini Hi-Res Coax, w/overall jacket, CMR .403"	Sweep tested
1280R	(6) 25 AWG Mini Hi-Res Coax, w/overall jacket, CMR .423"	Sweep tested

25 AWG Solid • Banana-Peel • Mini Hi-Res — Non-plenum		
Part No.	Description	Key Attributes
1281S3	(3) 25 AWG Mini Hi-Res Coax, Banana Peel, CMR .246"	Sweep tested
1281S4	(4) 25 AWG Mini Hi-Res Coax, Banana Peel, CMR .275"	Sweep tested
1281S5	(5) 25 AWG Mini Hi-Res Coax, Banana Peel, CMR .308"	Sweep tested
1281S6	(6) 25 AWG Mini Hi-Res Coax, Banana Peel, CMR .342"	Sweep tested

AL = Aluminum • ALB = Aluminum Braid • BC = Bare Copper
 • BCCS = Bare Copper Covered Steel • CCS = Copper Covered Steel • SOL = Solid
 Belden offers several other cable types for all installations.

RGB Cables—RGBS, RGBHV, and Video Mults / Video Bundles

(continued)

25 AWG Solid • Jacketed • Mini Hi-Res — Plenum		
Part No.	Description	Key Attributes
1277P	(3) 25 AWG Mini Hi-Res Coax, w/overall jacket - CMP .276"	Sweep tested
1278P	(4) 25 AWG Mini Hi-Res Coax, w/overall jacket - CMP .304"	Sweep tested
1279P	(5) 25 AWG Mini Hi-Res Coax, w/overall jacket - CMP .335"	Sweep tested
1280P	(6) 25 AWG Mini Hi-Res Coax, w/overall jacket - CMP .369"	Sweep tested

25 AWG Solid • Banana-Peel • Mini Hi-Res — Non-plenum		
Part No.	Description	Key Attributes
1282S3	(3) 25 AWG Mini Hi-Res Coax, Banana Peel, CMP .246"	Sweep tested
1282S4	(4) 25 AWG Mini Hi-Res Coax, Banana Peel, CMP .275"	Sweep tested
1282S5	(5) 25 AWG Mini Hi-Res Coax, Banana Peel, CMP .308"	Sweep tested
1282S6	(6) 25 AWG Mini Hi-Res Coax, Banana Peel, CMP .342"	Sweep tested

6 Video + 2 Audio • Banana-Peel		
Part No.	Description	Key Attributes
5788AV	(6) 25 AWG Mini Hi-Res Coax + (2) STP 22 AWG - Riser	Sweep tested
6788AV	(6) 25 AWG Mini Hi-Res Coax + (2) STP 22 AWG - Plenum	Sweep tested

23 AWG Solid • SDI Coax Mult. • Banana-Peel - Non-plenum		
Part No.	Description	Key Attributes
1855S3	(3) 23 AWG SDI Mini RG59 (1855A), Banana Peel, CMR	Sweep tested
1855S5	(5) 23 AWG SDI Mini RG59 (1855A), Banana Peel, CMR	Sweep tested
1855S6	(6) 23 AWG SDI Mini RG59 (1855A), Banana Peel, CMR	Sweep tested

20 AWG Solid • SDI Coax Mult. • Banana-Peel - Non-plenum		
Part No.	Description	Key Attributes
1505S3	(3) 20 AWG SDI RG59 (1505A), Banana Peel, CMR	Sweep tested
1505S5	(5) 20 AWG SDI RG59 (1505A), Banana Peel, CMR	Sweep tested
1505S6	(6) 20 AWG SDI RG59 (1505A), Banana Peel, CMR	Sweep tested

20 AWG Solid • SDI Coax Mult. • Banana-Peel — Plenum		
Part No.	Description	Key Attributes
1283S3	(3) 20 AWG SDI RG59 (1506A), Banana Peel, CMP	Sweep tested, Plenum-rated
1283S5	(5) 20 AWG SDI RG59 (1506A), Banana Peel, CMP	Sweep tested, Plenum-rated
1283S6	(6) 20 AWG SDI RG59 (1506A), Banana Peel, CMP	Sweep tested, Plenum-rated

18 AWG Solid • SDI Coax Mult. • Banana-Peel - Non-plenum		
Part No.	Description	Key Attributes
1694S3	(3) 18 AWG SDI RG6 (1694A), Banana Peel, CMR	Sweep tested
1694S5	(5) 18 AWG SDI RG6 (1694A), Banana Peel, CMR	Sweep tested
1694S6	(6) 18 AWG SDI RG6 (1694A), Banana Peel, CMR	Sweep tested

23 AWG Solid • SDI Coax Mult. • Jacketed — Non-plenum		
Part No.	Description	Key Attributes
7787A	(3) 23 AWG SDI Mini RG59 (1855A), w/overall jacket, CMR	Sweep tested
7788A	(4) 23 AWG SDI Mini RG59 (1855A), w/overall jacket, CMR	Sweep tested
7789A	(5) 23 AWG SDI Mini RG59 (1855A), w/overall jacket, CMR	Sweep tested
7790A	(6) 23 AWG SDI Mini RG59 (1855A), w/overall jacket, CMR	Sweep tested
7791A	(10) 23 AWG SDI Mini RG59 (1855A), w/overall jacket, CMR	Sweep tested
7792A	(12) 23 AWG SDI Mini RG59 (1855A), w/overall jacket, CMR	Sweep tested

20 AWG Solid • SDI Coax Mult. • Jacketed — Non-plenum		
Part No.	Description	Key Attributes
7794A	(3) 20 AWG SDI RG59 (1505A), w/overall jacket, CMR	Sweep tested
7795A	(4) 20 AWG SDI RG59 (1505A), w/overall jacket, CMR	Sweep tested
7796A	(5) 20 AWG SDI RG59 (1505A), w/overall jacket, CMR	Sweep tested
7798A	(10) 20 AWG SDI RG59 (1505A), w/overall jacket, CMR	Sweep tested

Belden offers several other cable types for all installations.



RGB Cables—RGSB, RGBHV, and Video Mults / Video Bundles (continued)

18 AWG Solid • SDI Coax Mult. • Jacketed — Non-plenum		
Part No.	Description	Key Attributes
7710A	(3) 18 AWG SDI RG6 (1694A), w/overall jacket, CMR	Sweep tested
7711A	(4) 18 AWG SDI RG6 (1694A), w/overall jacket, CMR	Sweep tested
7712A	(5) 18 AWG SDI RG6 (1694A), w/overall jacket, CMR	Sweep tested
7713A	(10) 18 AWG SDI RG6 (1694A), w/overall jacket, CMR	Sweep tested

Connectors for 25 AWG Solid Conductor Mini Hi Res Coax

Part No.	Description	Key Attributes
1B25A	1 piece compression BNC for 25 AWG solid conductor coax - Ni	Nickel plated
1R25A	1 piece compression RCA for 25 AWG solid conductor coax - Ni	Nickel plated
HC2920A	1 piece compression BNC for 25 AWG solid conductor coax - Au	Gold plated
HC2910A	1 piece compression RCA for 25 AWG solid conductor coax - Au	Gold plated
HCCT	Compression Tool for Compression Connectors	Ratcheting action
HCST	Coaxial Cable Prep. Tool for Mini Coax, (RGB), RG59, and RG6	Easy to use

S-Video Cables

Belden S-Video cables are the Number One choice of professional broadcast engineers and assembly technicians. The cables are sized for fit onto industry standard DIN connectors, or may be connected to DIN pigtails with BNC or RCA connectors.

S-Video Cables (7700A is Plenum-rated)		
Part No.	Description	Key Attributes
1807A	(2) 30 AWG Stranded Coax - Parallel Zip Style	Fits DIN connector
1808A	(2) 30 AWG Stranded Coax - Round Construction	Fits DIN connector
7700A	(2) 30 AWG Stranded Coax - Parallel Zip Style	Fits DIN connector, Plenum

Fiber Optic Cables

Belden offers a variety of single-mode and multimode optical fiber cables in Riser and Plenum versions, and cables suitable for both indoor and outdoor applications.

Single-Mode		
Duplex Riser		
Part No.	Description	Key Attributes
M9W002	2 SM Fiber Duplex Zip Yellow - OFNR	Riser-rated
Indoor/Outdoor Loose Tube OSP OFNR		
Part No.	Description	Key Attributes
M9W810	6 SM Loose Tube Fiber OSP OFNR	Riser-rated
M9W811	12 SM Loose Tube Fiber OSP OFNR	Riser-rated
M9W812	24 SM Loose Tube Fiber OSP OFNR	Riser-rated

Multimode 62.5 Micron Glass		
Duplex Riser and Plenum		
Part No.	Description	Key Attributes
M9B915	(2) 62.5 micron Fiber Duplex Zip Orange OFNR	Riser-rated
M9B919	(2) 62.5 micron Fiber Duplex Zip Orange OFNP	Riser-rated
Indoor/Outdoor Loose Tube OSP Riser		
Part No.	Description	Key Attributes
M9B810	(6) 62.5 micron Loose Tube Fiber OSP OFNR	Riser-rated
M9B811	(12) 62.5 micron Loose Tube Fiber OSP OFNR	Riser-rated
M9B812	(24) 62.5 micron Loose Tube Fiber OSP OFNR	Riser-rated
Armored Indoor/Outdoor Loose Tube OSP Riser and Plenum		
Part No.	Description	Key Attributes
M9B890	(6) 62.5 micron Loose Tube Fiber Armored OSP OFNR	Riser-rated
M9B202	(6) 62.5 micron Loose Tube Fiber Armored OSP OFNP	Riser-rated
M9B204	(12) 62.5 micron Loose Tube Fiber Armored OSP OFNP	Riser-rated

Indoor/Outdoor Tight Buffer Distribution Plenum		
Part No.	Description	Key Attributes
M9B045T	(6) 62.5 micron Tight Buffer Fiber Distribution OFNP	Riser-rated
M9B048T	(12) 62.5 micron Tight Buffer Fiber Distribution OFNP	Plenum

Belden offers several other cable types for all installations.



For more information on Belden's line of A/V Enclosures, call your local Belden representative. Be sure to ask for our comprehensive "Enclosure and Rack Solutions" brochure. Your rep will be able to answer any questions you might have – including details on our custom configuration capabilities.

U.S. Customer Service: 800-BELDEN-1 (800-235-3361)

See www.belden.com for a complete listing of Belden locations.

UNITED STATES

Division Headquarters—Americas

2200 U.S. Highway 27 South
Richmond, IN 47374
Phone: 765-983-5200
Inside Sales: 800-235-3361
Fax: 765-983-5294
info@belden.com
web: www.belden.com

ASIA/PACIFIC

Australia

Level 10
369 Royal Parade
Parkville, Victoria 3052
Australia
Phone: 613-9341-0900
Fax: 613-9347-8274
australia.sales@belden.com

Hong Kong

7/F Harbour View 2
16 Science Park East Avenue
Hong Kong Science Park
Shatin, Hong Kong
Phone: 852-2955-0128
Fax: 852-2907-6933
hongkong.sales@belden.com

Shanghai

Unit 301 No.19 Building
1515 Gu Mei Road
Caohejing High-tech Park
Shanghai, 200233
People's Republic of China
Phone: 86-21-54452388
Fax: 86-21-54452366/77
www.belden.com.cn

Beijing

Room 2502-2503
E-Tower No.C12
Guanghua Road, Chaoyang Dist.
Beijing, 100020
People's Republic of China
Phone: 86-10-65918801
Fax: 86-10-65918933
www.belden.com.cn

India

16th Floor, Tower B,
Unitech Cyberpark
Sector 39, Gurgaon
Haryana, India
Phone: 91-124-450-9999
Fax: 91-124-450-9900
india.sales@belden.com

Singapore

27 International Business Park
#05-01, iQuest@IBP
Singapore 609924
Phone: +65 6879-9800
Fax: +65 6564-9602
singapore.sales@belden.com

CANADA

Cobourg

130 Willmott Street
Cobourg, Ontario K9A 4M3
Canada
Phone: 905-372-8713
Fax: 905-372-6291
salescobourg@belden.com

Montreal

2280 Alfred-Nobel Boulevard
St-Laurent, QC H4S 2A4
Phone: 800-681-6131
Fax: 514-822-7968
ibdn.info@belden.com

EUROPE/AFRICA/MIDDLE EAST

France

Immeuble le Cesar
20, Place Louis Pradel
69001 Lyon
France
Phone: 33-472-109-990
Fax: 33-478-298-409
lyon.salesinfo@belden.com

Italy

Via Paracelso, 26
Centro Direzionale Colleoni
Palazzo Cassiopea Ingr. 3
20041 Agrate Brianza (MI)
Italy
Phone: 39-039-656-0911
Fax: 39-029-656-0929
milano.salesinfo@belden.com

Africa/Middle East

Dubai Internet City
Building One, Office 216
Dubai
United Arab Emirates
Phone: 97-14-391-0490
Fax: 97-14-391-8775
dubai.salesinfo@belden.com

The Netherlands

Division Headquarters – Europe

Edisonstraat 9, Postbus 9
5928 PG Venlo, 5900 AA
The Netherlands
Phone: 31-773-878-555
Fax: 31-773-878-448
venlo.salesinfo@belden.com
www.belden-emea.com

United Kingdom

Manchester Int'l. Office Centre
Suite 13
Styal Road
Manchester M22 5WB
United Kingdom
Phone: +44-161-498-3749
Fax: +44-161-498-3762
manchester.salesinfo@belden.com

LATIN AMERICA AND THE CARIBBEAN ISLANDS

Regional Office

6100 Hollywood Boulevard
Suite 110
Hollywood, Florida 33024
Phone: 954-987-5044
Fax: 954-987-8022
salesla@belden.com

Mexico

Insurgentes Sur 800, Piso 9
Colonia del Valle
03100 Mexico, D.F.
Mexico
Phone: 5255-5523-7733
Fax: 5255-5528-8077
salesmex@belden.com

Brazil

Av. Rebouças
1023 – 4 Andar
05401-300 Sao Paulo, SP Brasil
Phone: 5511-3061-3099
Fax: 5511-3061-3752
salesbrzl@belden.com