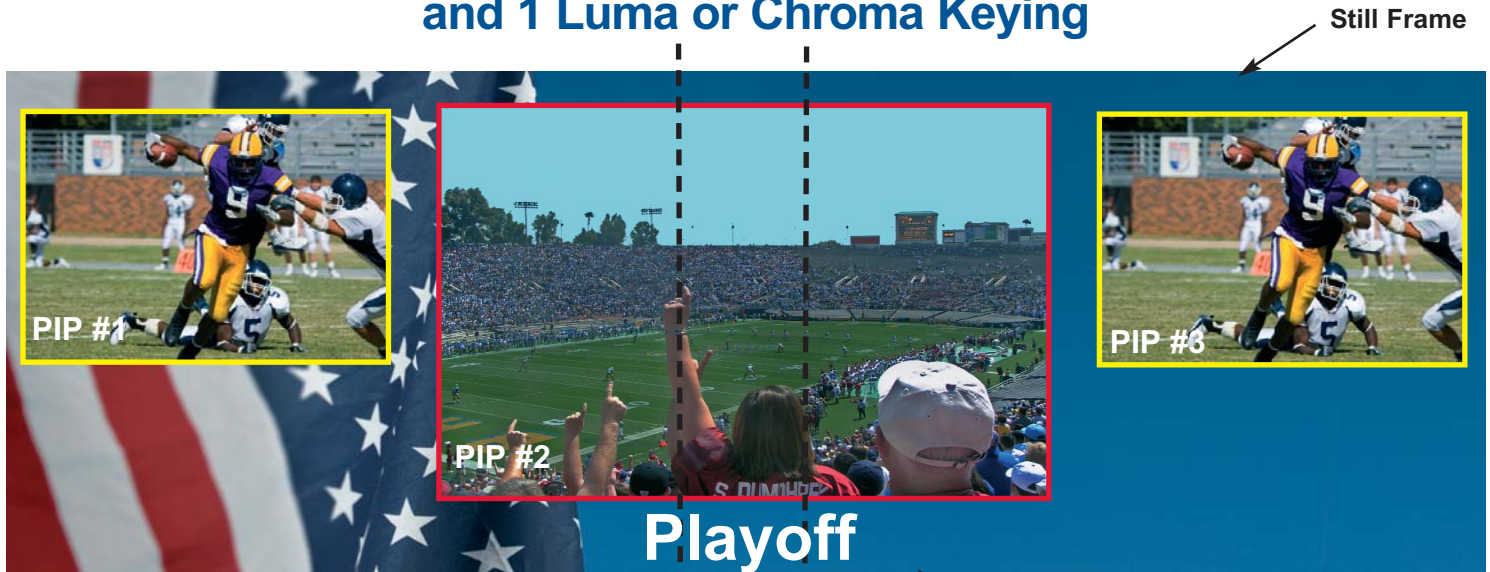




Embedded Soft Edge Presentation using 1 Di-VentiX II with 3 PIP Layers, 1 Still Frame and 1 Luma or Chroma Keying



(Can switch 4 different stored backgrounds by seamless switching)

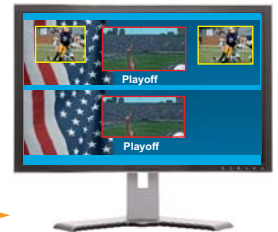
Luma or Chroma Keying



Out #1

Out #2

Video option for Monitoring or Recording



Trident SD/HD-SDI - XD213

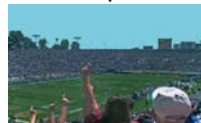
Sources:



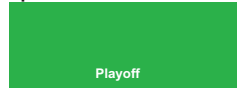
PIP #1 & PIP #3



Background



PIP #2



Titling effect



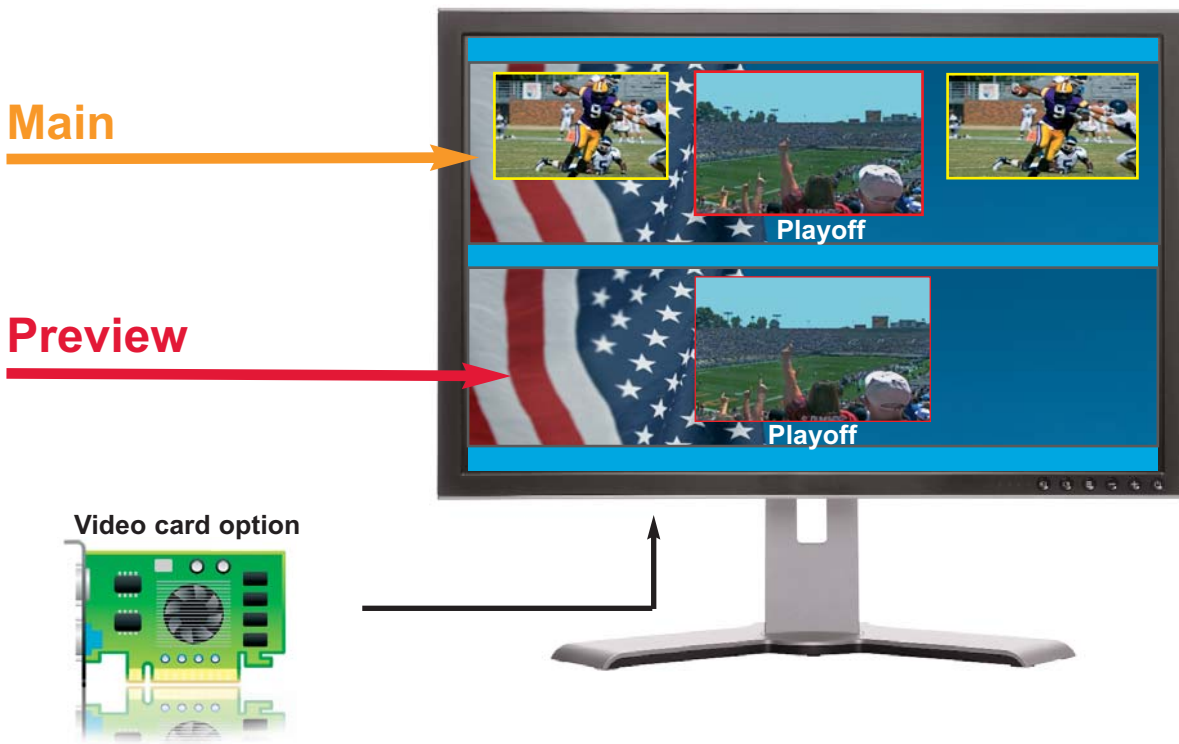
The Di-VentiX II is capable of displaying up to 4 live sources in embedded Soft Edge Blending mode, regardless of the size or position of the layer. By using a stored background and stored logos, you can achieve up to 7 layers on the screen at one time.



Video Option for Monitoring or Recording on a single display - Video Output available in Composite, S-Video, Component, SDI, HD-SDI and Video DVI

The **Di-VentiX II** with the Video Option allows to have a full Main screen for recording / broadcasting, or a split screen between Main and Preview in embedded Soft Edge Blending Mode for monitoring.

Video Option for Monitoring:



Or....

Video Option for Recording:

