

Manager Stage™

Manager Stage

iX Range

Ref. MMSAW

- > Application specific software to control unlimited number of iX Switchers for large image presentations
- > Comprehensive graphical user interface with preview
- > Fast learning curve
- > Live and programmed shows

Download
at www.analogway.com:
- product spec sheets in pdf
- latest product upgrades

Manager Stage for **Analog Way** is based on the show control software **Manager Stage** by Medialon®. A specific plug in for **Di-VentiX** allows the control of an unlimited number of image processors from a single PC.

Its graphical programming interface represents your projection area and allows easy preview and programming of layout and transition effects. Layout and transition effects are stored in presets which can be recalled live during your presentation, or synchronized on a timeline. Presets can even be edited live during preview, just before being sent on screen.

MINIMUM REQUIREMENTS:

- Windows XP or 2000
- Ethernet port
- Hub or Switcher for the control of several Di-VentiX
- 1 CD Rom Drive

All **EventiX** effects are supported by **Manager Stage**, such as PIP, wipe, fading, titling, mixing and seamless switching. Thanks to its graphical user interface, **Medialon Manager Stage** for **Analog Way** gives you a unique automation tool to program and run large screen presentations. Even small events benefit from amazing effects which can only be achieved with a powerful software tool.

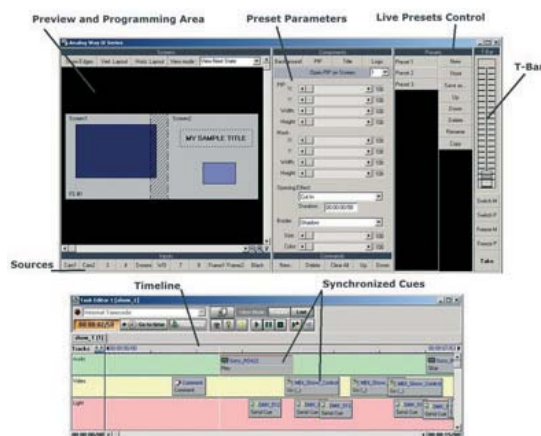
Programming: A preset is both a layout (ie. position of sources in window on your projection area) and an associated transition effect. Just drag and drop windows, assign sources and transition effect, run for pre-monitoring and store as a preset.

Live Show: All recorded presets are available randomly at a click of a mouse to be recalled and previewed on the computer screen. After recall, a preset can be edited just before being sent or sent directly by moving the T-bar.

Pre-canned show: Presets can be recalled from a Timeline to be synchronized and sequenced accurately together. Even in this mode, live recall and edition of preset is still available.

Automatic start, loop, pause and many other features can be programmed in timelines. Several timelines can run simultaneously and saved for future use.

Updates: **Manager Stage** for **Analog Way** is a limited edition of **Medialon Manager Stage**, it controls the **iX**, **Octo** and **Graphic Switcher II** series from **Analog Way**. Control of other display devices (Matrix switchers, video-projectors, Video sources, etc...) can be added by using the Medialon® enhancement kit available at www.medialon.com.



REFERENCE

Medialon Manager Stage for AW: MMSAW

Specifications subject to change without notice



ANALOG WAY®

www.analogway.com

P/N: MMSAW/B0606-VA