

MULTI-SCREEN PROCESSORS FOR VIDEO AND DATA DISPLAY

MediaWall 4500/4200

Real Time Display Wall Processors

**Fully real time -
no dropped frames**

Robust 24/7 operation

Up to 12 output screens

**Up to 30 graphic & video
windows**

DVI input cable equalization

**DVI outputs with
500mA pin-power**

Control via web browser

Embedded operating system

Downloadable backgrounds

Borders & titles

Bezel compensation

Image overlap

Plug and play architecture

**Smooth scaling, panning,
zooming**

No PC vulnerabilities

No hard drives

Presets

KVM option

Edge blending option

For more about KVM see
[http://rgb.com/products/
KvMforMediaWall/?c=n](http://rgb.com/products/KvMforMediaWall/?c=n)

The next generation MediaWall® processors are fully real time display wall systems for arrays of projectors, cubes or flat panel displays. Unique among display wall processors, the MediaWall 4500 and 4200 are based on a custom, high performance architecture rather than a PC, with faster updates, more display flexibility, robustness and security. Real time display of inputs is guaranteed under all conditions, without dropped frames.

The MediaWall 4500 processor can display up to 30 graphics and video signals on up to 12 screens in a 3x4 array; the MediaWall 4200 can display up to 12 graphics and video signals on up to 8 screens in a 2x4 array. Images can be displayed anywhere, any size, within or across screens, in correct aspect ratio or stretched to fit, in whole or zoomed to emphasize details. Unlike other video/data walls, MediaWall processors have essentially no limits on display alternatives; the multi-screen array forms a truly virtual screen in which any display of windows is possible. Input alternatives include RGB/ DVI and analog video modules. HD-SDI modules will be available in the near future.

Graphics signals are selectable up to 1920x1200 and 2048x1152 pixels. HD and digital cinema resolutions up to 2048x1080p are also supported. Standard video inputs include composite, component and S-Video. Background images, up to the aggregate resolution of the display wall, can be loaded from compact flash cards or over a network.

DVI inputs include built-in cable equalization on all inputs to increase cable lengths to 50 meters without the need for external signal extenders. On DVI outputs, 500mA of power is available for pin-powered devices, obviating the need for external power adapters.

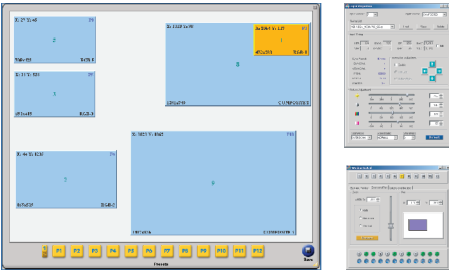
Control is available via USB, RS-232, or Ethernet port. A web browser based control system provides both local and remote operation, with a graphical representation of the wall and "drag and drop" window positioning and scaling.

MediaWall processors offer 24/7 robustness. They come packaged in rack mountable enclosures with replaceable air filters and redundant power supplies, providing excellent solutions for challenging environments. Most importantly, MediaWall processors provide the security and reliability of an embedded operating system and the absence of hard drives.

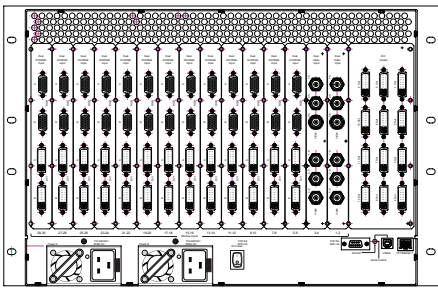
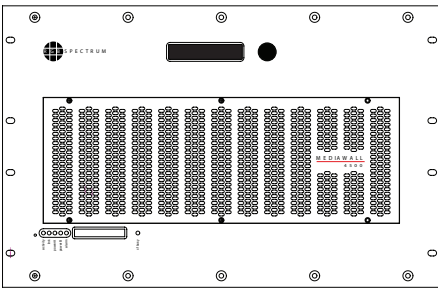
The processors work with almost any display devices. They offer adjustments to compensate for the bezel between panels and overlapped outputs to support edge blending on a continuous screen. Output resolution can be adjusted to the exact resolution of a display device up to 1920x1200, 2048x1152 or 2048x1080 p, the highest resolution of any data/video wall.

A full array of features includes dynamic window sizing and positioning, smooth zooming within images, custom borders, titling, programmable presets, backgrounds and logos. Available options include Advanced Windows Control Panel (digital clock, on-screen cursor control and multi-level password control) and KVM control.

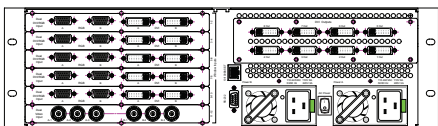
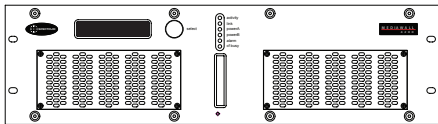
The MediaWall 4500 and 4200 are unbeatable for mission critical, real time operations.



Easy operation with intuitive “virtual screen” and “click and drag” simplicity. Control screens are accessible locally or remotely over any Internet browser. The internet browser approach offers the advantage of independence from the operating system of the control device.



MediaWall 4500



MediaWall 4200

The MediaWall processor offers a true plug-and-play architecture with ease of set-up similar to a matrix switcher.

Specifications

Number of Display Windows Model 4500: up to 30 (user selectable)
Model 4200: up to 12 (user selectable)

RGB/DVI Input Module

GB Analog	Interlaced and progressive
Number/type	2x analog RGB/YPbPr/HD
Video level	1.0V p-p for G and Y composite, 0.7V p-p for RB and PbPr
Input impedance	75 Ohms
Sample rate	Up to 165 MHz
Horizontal scan rate	12 kHz to 125 kHz
Frame rate	Up to 200 Hz
Resolution	640x480 to 1920x1200 and 2048x1152, 720p, 1080i, 1080p
Sync Connector	RGsB, RGbS, RGBHV, YPbPr (tri-level or bi-level sync on Y) 15-pin HD

DVI Digital

Number/type	2x DVI single link up to 1920 x 1200, 2048 x 1152 and 2048 x 1080p
Cable equalization	Automatic or manual; up to 164 feet or 50 meters
Connector type	DVI-I (digital only)

Analog Video Input Module

Number/type	2x composite video/S-Video/YPbPr
Video level/format	1.0V p-p for G and Y composite, 0.7V p-p for RGB and PbPr 625 line PAL, 525 line NTSC
Sync	YPbPr (tri-level or bi-level sync on Y)
Input impedance	75 Ohms
Connector type	BNC (female)

Outputs

Type	DVI
Number	Model 4500: 4, 8 or 12 Model 4200: 4 or 8
Configurations	Model 4500-1 & 4200-1: 1x2, 1x3, 1x4 Model 4500-2 & 4200-2: 2x2, 2x3, 2x4 Model 4500-3: 3x3, 3x4
Resolution	640x480 to 1920x1200, 2048x1152 and 2048x1080p
Sample rate	35 to 165 MHz
Pin power	500mA @ 5 VDC per output
Connector	DVI-I (digital only)

Other

Power	Model 4500: dual redundant power supplies Model 4200: optional dual redundant power supply 100 - 240 VAC auto ranging 50/60 Hz Model 4500: 750W maximum Model 4200: 325W maximum
Control	Command line using RS-232 or USB 2.0 Ethernet 10/100 BASE-T Graphical User Interface via web browser Telnet
Options	Advanced “Web Control Panel” (clock, cursor control, multi-level password control), edge blending, K vM
Size	Width: 19.0”/48.3 cm Depth: 22.0”/55.9 cm Height: Model 4500: 12.25”/ 31.1 cm (7RU) Model 4200: 5.25”/ 13.3 cm (3RU)
Weight	Model 4500: less than 70 lbs / 32 kg Model 4200: less than 35 lbs / 15.9 kg

