

**Four windows plus background option**

**DVI, RGB, HD, S-Video,  
NTSC/PAL inputs**

**Sixteen input multi-format video  
switcher**

**Smoothly scalable windows**

**Ethernet and USB control**

**Pan and zoom**

**Variable aspect ratio**

**10 bit pixel processing**

**Color backgrounds**

**Compact 1 RU chassis**

**RGB and DVI outputs**

**Titles and borders**

**Fifty programmable presets**

**Resolutions to 1920x1200,  
2048x1152 and 2048x1080p**

**On-screen cursor control**

**NTP clock option**

**Background video option**

## COMPUTER AND VIDEO SOURCES ON A SINGLE SCREEN

### QuadView HD

#### 4 Window Real Time Display Processor

The QuadView® HD offers the most powerful image processing available in a compact multiviewer, with outstanding image quality, plus a web based control, dynamic window sizing, borders and titling, smooth zoom/pans and more. The QuadView HD is ideal for any application requiring display of multiple images on a monitor or projector.

The QuadView HD accepts high resolution DVI, RGB, HD, S-Video, component and NTSC/PAL composite video. Up to twenty four sources can be connected, four of which can be displayed simultaneously. The QuadView HD offers the highest quality graphics and HD rendition, with state-of-the-art deinterlacing and scaling. Its picture quality sets a new standard for the industry.

An agile video switcher accepts up to sixteen video inputs, user configurable as sixteen composite, eight S-Video or five component video inputs, in any combination. Up to sixteen video inputs can be cycled through a single window at user selected timing intervals.

The QuadView HD supports real time, dynamic movement and resizing of windows. Each input can be scaled and positioned anywhere on the screen, as well as panned and zoomed to emphasize areas of interest. Display alternatives are virtually infinite, and include quad split, side-by-side, picture-in-picture, and overlapping windows.

User-selectable output resolutions of up to 1920x1200, 2048x1152, and 2048x1080p ensure a perfect match with any display. With DVI inputs and outputs, a completely digital signal path can be maintained from signal source to display.

Two exciting new display options are offered. The Background Video Option includes a package of capabilities, including an on-screen digital clock, logo or other foreground graphic, a live background or static backgrounds loaded over the Ethernet. A second option offers KVM capability to provide control of any computer or network controllable device displayed. Best yet, KvM™ is RGB Spectrum's patent pending implementation of traditional KVM, with full bandwidth video directly connected to the processor; only control signals are passed over the network. This implementation guarantees real time video performance, unavailable in other systems.

All functions are easily set up and controlled using a command line interface from either the USB or Ethernet ports, or graphically via a standard web-browser.

Built on RGB Spectrum's long tradition of quality and reliability, the QuadView HD is an excellent solution for all multimedia display, including the most demanding mission critical applications.

For more about KVM see pg. 9

**Specifications**

**Input Signals**

Number/type	4x RGB/HD (YPbPr) 4x DVI 1x DVI optional background input Up to 16 x composite video; also configurable as up to 8x S-Video or up to 5x component
Resolution	640x480 to 1920x1200 and 2048x1152
Horizontal scan rate	720p, 1080i, 1080p and 2048x1080p
Frame rate	12 kHz to 125 kHz interlaced or non-interlaced
Video levels	Up to 100 Hz
Sync type	0.7 V p-p Sync on green, tri-level sync (HD), separate composite sync, or separate H-drive and V-drive
Connectors	
Pin power	RGB: 15-pin HD D-Sub (female) DVI: 29-pin DVI-I (digital only) Video: BNC (female)

**Output Signals**

Number/type	1x RGB analog 1x DVI digital
Resolution	640x480 to 1920x1200 and 2048x1152 720p, 1080i, 1080p and 2048x1080p
Horizontal scan rate	12 kHz to 125 kHz non-interlaced
Frame rate	Up to 100 Hz
Video levels	0.7 V p-p
Sync type	Sync on green, tri-level sync (HD), separate composite sync, or separate H-drive and V-drive
Connectors	Analog and digital: 29-pin DVI-I

Power	100-240 VAC auto ranging 50/60 Hz Less than 45 W
Control	Ethernet 10/100 BASE-T USB interface Web interface
Size	1 RU Width 17.00"/43.2 cm Depth 13.5"/34.3 cm Height 1.75"/4.5 cm
Rackmount kit	Included
Weight	Approximately 13.5 lbs/6.1 kg

**Tactical operations centers**

**Control rooms**

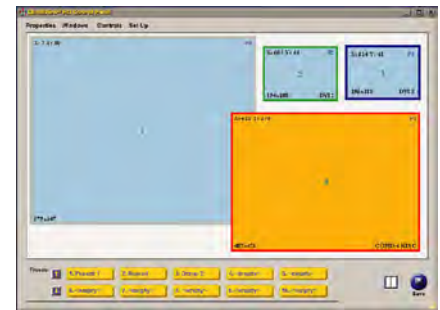
**Network operations centers**

**Naval & airborne consoles**

**Video teleconferencing**

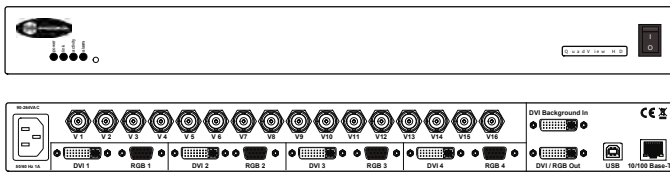
**Security / surveillance**

**Operating rooms**



**QuadView HD Web Interface**

Operate the processor's display capabilities remotely from any web browser.



**Front and rear panels with optional background input**