

Add a Keypad Anywhere!

It's a Remote Control Where and When You Need It Most



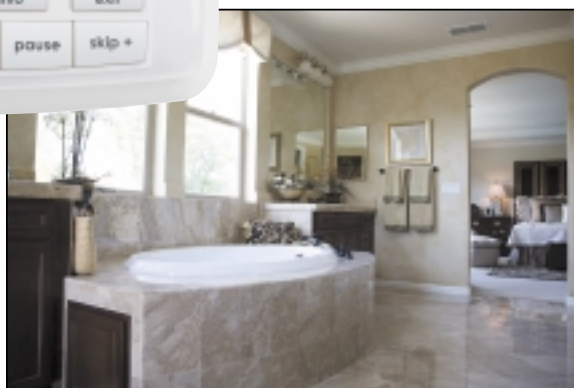
Tunes in the kitchen.



Lounging in the Solarium.



No wiring so there are no holes needed.



In the bath for a relaxing soak.

Specifications

Memory: 4 Megabits of Flash Memory (for User Configuration)

Devices: Flexible, typically can support up to 255

Pages: Flexible, typically can support up to 255 Pages on each Device

Learning Capability: Standard frequencies (15kHz to 460kHz)

Macro Capability: Up to 255 steps each, however nesting is allowed, thus real macro length is unlimited.

Backlighting: Blue for all buttons, 255 color backlighting for the LCD

IR Range (line of sight via infrared): 30-50 feet, depending on the environment

RF Range (radio frequency): 50 to 100 feet, depending upon the environment

RF Frequency: 418MHz

Weight: 8 ounces (with batteries)

Size (KP-900 only): 4-3/4"H x 5-7/16"W x 5/8"D

Size (KP-900 with the wall bracket): 5-1/16"H x 6-1/8"W x 13/16"D

Batteries: 4 AAA batteries

KP-900 Wireless Keypad/Remote

Wall Mounted Keypad and Hand-Held Remote Control

Mounts Anywhere, Everywhere

No wires to pull—the IR/RF KP-900 Keypad Remote is completely wireless. Powered by four easy-to-replace AAA batteries, it can be easily removed from the wall bracket for convenient handheld use. The keypad can be mounted on any surface—brick, sheetrock or plaster—using the included four small screws. And the built-in magnets allow it to stick to metal surfaces—even most refrigerators. It features backlit, laser etched buttons and a bright backlit LCD for easy text-based control.

Available in Three Color Options



White



Black



Light Almond



KP-900 and Mounting Plate shown above are actual size.

COMPLETE CONTROL

UNIVERSAL
remote control

The Pioneer in Control Technology

500 Mamaroneck Avenue, Harrison, NY 10528 Phone: (914) 835-4484 Fax: (914) 835-4532
www.universalremote.com

COMPLETE CONTROL

UNIVERSAL
remote control

The Pioneer in Control Technology

An Elegant Way to Enhance Your System

Three Sets of Keys Enable Customized Installation

Each KP-900 includes 3 different sets button options.



Volume Control



Transport



Blank

Options for the Volume and Mute Buttons for Systems with In-Wall Volume Controls

The KP-900 is equipped with options for the Volume/Mute positions. In systems with in-wall volume controls that really have no remote controlled volume and mute, you can opt to install one of the other choices. To install buttons:

1. Place the button over the desired spot.
2. Push the button into place. The button snaps into place.

Note: Buttons are not designed to be removed once installed.

Your Walls are Sealed Up

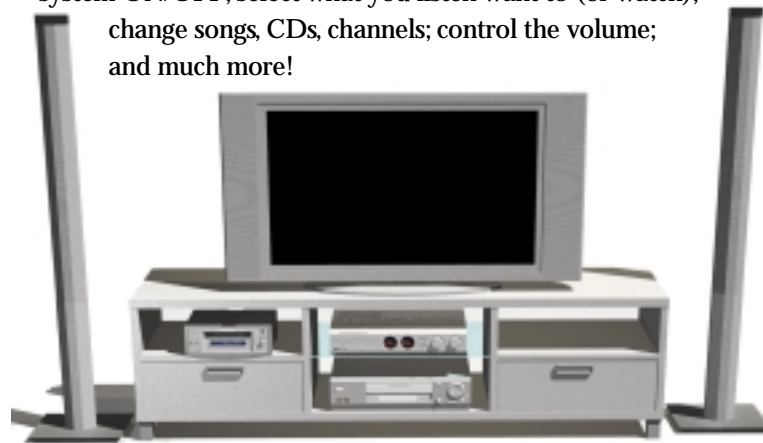
You don't want the expense or inconvenience of construction or running wires through your walls. Adding a wireless KP-900 solves this problem and provides better control everywhere you need it.

One Touch Multi-Colored Backlighting

Press any button to backlight the screen and the hard buttons.

Upgrade Your System

Adding a KP-900 enables you to operate your Home Theater from any room in your house, even outdoors. You can: turn the system ON/OFF; select what you listen want to (or watch); change songs, CDs, channels; control the volume; and much more!



Leverage What You Already Own

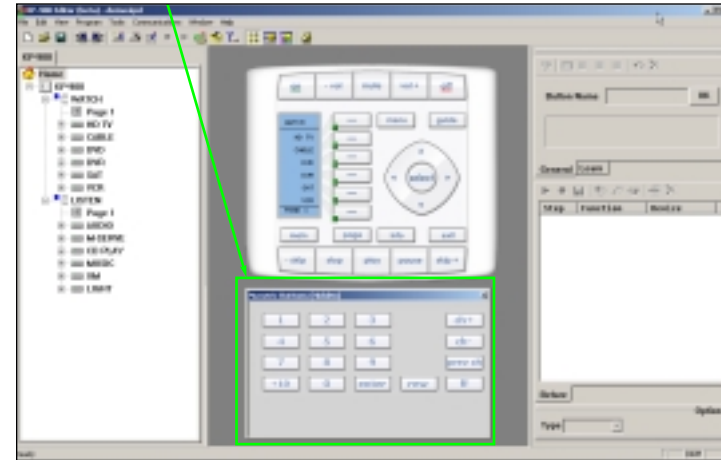
Second zone outputs are readily controlled with the KP-900. It's like adding new system in another room.

Integrated Sound Signaling

The KP-900 incorporates a small speaker for beeps. Anytime you press a button, the KP-900 signals that it has understood your command with a beep sound.

Windows Based PC Software

The KP-900 Editor is completely text based, a custom configuration for the most demanding client can be set up in a fraction of the time it takes with many other remotes.



The KP-900 Mounts Anywhere

The mounting plate encloses the keypad. The keypad is removed from the mounting plate by lifting it out. Keypad is magnetic and locks to metal inserts inside the bracket. The keypad can mount to any surface, even most refrigerators and easily removes from mount for hand-held use.



KP-900 Narrow Band RF and MSC-400 Compatible

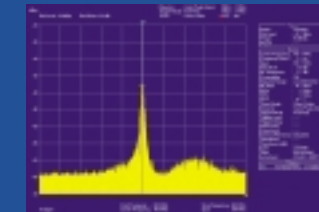
Any audio video system, by its very nature, includes components with high speed microprocessors which produce wide band localized RF interference. The combination of the KP-900 Narrow Band RF Transmitters with the RFX-250 provides ultra reliable RF via the extraordinarily specific narrow band reception of the RFX-250.



RFX-250 Narrow Band RF Receiver (Included with the MRF-350 and MSC-400 System)

The RFX-250 is included with both the MRF-350 Routing Base Station and the MSC-400 Master System Controller.

The KP-900 is compatible with the new MSC-400 "Trigger" protocol, which enables complex macros, stored in the MSC-400 to be individually triggered with a single button push on the KP-900 regardless of the interference and noise in the environment.



Narrow Band RF Transmission

The combination of very narrow transmission of digitally encoded packets sent THREE times at digital speeds in milliseconds, assures that every button press on the remote will be received by the MSC-400. The MSC-400's sophisticated error correction circuitry stores all three packets and compares them. Once two packets are identified as identical, the MSC-400 goes to work.

This new technology not only increases range, but increases reliability by a vast margin. The KP-900 is equipped with both the new Narrow Band Transmitters and the new RF Protocol for the MSC-400.



MSC-400 Master System Controller

COMPLETE CONTROL™