

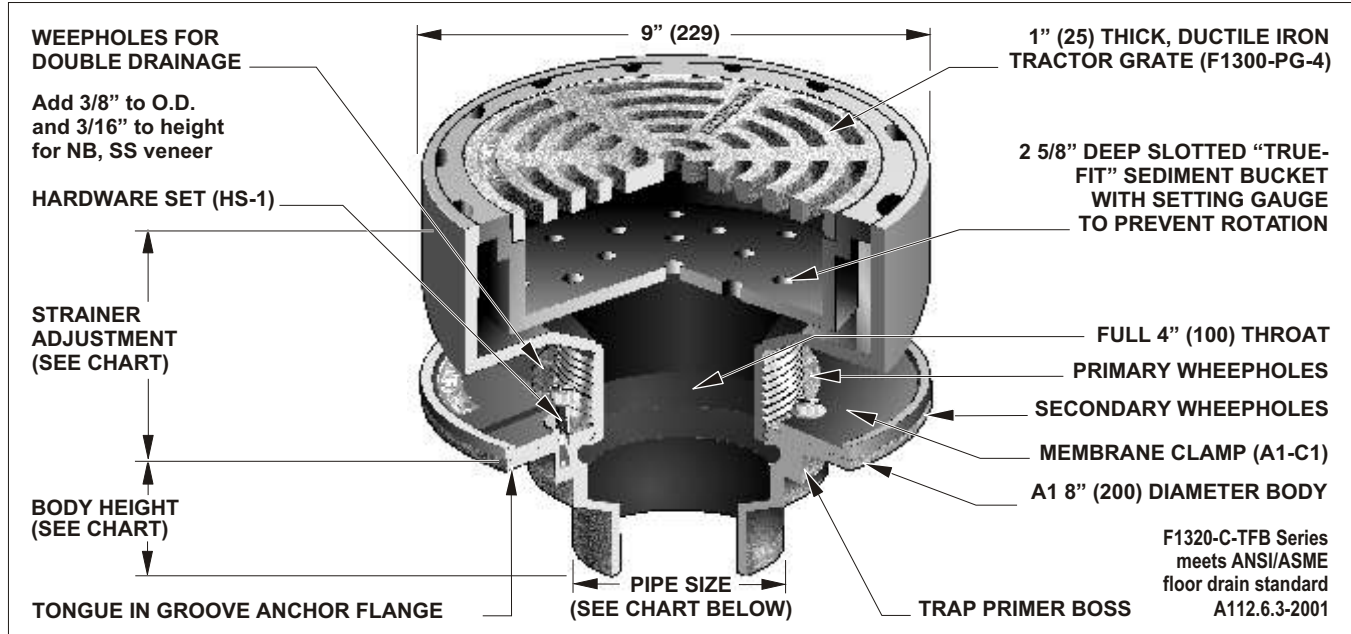


# F1320-C-TFB

## FLOOR DRAIN WITH 9" ROUND ADJUSTABLE TRACTOR GRATE AND "TRUE-FIT" SEDIMENT BUCKET

**Specification:** MIFAB® Series F1320-C-TFB-4 lacquered cast iron floor drain with anchor flange, cast iron membrane clamp with primary and secondary weepholes for waterproofing membrane, standard 1" (25) thick, 9" (227) round, ductile iron tractor grate and "True-Fit" sediment bucket designed so that grate cannot be set unless the sediment bucket is in position. (For non-membrane floors, use MIFAB® F1320-TFB Series).

**Function:** Used where waste water contains solids or debris that must be intercepted to prevent drain line clogging. "True-Fit" design ensures that the sediment bucket will always be replaced after cleaning. The grate cannot be set unless the sediment bucket is in place.



STRAINER DIAMETER	STRAINER ADJUSTMENT		ANSI/ASME RATING		PIPE SIZE	BODY HEIGHT				
	MIN	MAX	FREE AREA	LOAD RATING N.B. (-1), S.S. (-3), D.I. (-4)		NO HUB (STANDARD)	PUSH ON (P)	THREADED (T)	INSIDE CAULK (X)	PVC/ABS (-30)/(-31)
9" (229)	3 5/8" (41)	5 5/8" (67)	18 in <sup>2</sup> (11613 <sup>2</sup> )	ANSI/ASME	2" (51)	2 3/4" (70)	3 3/8" (86)	2 1/4" (57)	3 3/4" (95)	2 15/16" (75)
				LOAD CLASS	3" (76)	2 3/4" (70)	3 3/8" (86)	2 5/8" (67)	3 3/4" (95)	3 3/4" (95)
				"SPECIAL DUTY" (OVER 10,000 LBS.)	4" (102)	2 3/4" (70)	3 3/8" (86)	2 5/8" (67)	3 3/4" (95)	3 3/4" (95)
					5" (127)	2 3/4" (70)	-	2 5/8" (67)	-	-
					6" (152)	3 1/4" (83)	4 3/4" (121)	-	-	-

### OPTIONAL VARIATIONS:

- Nickel bronze strainer (vener)
- Stainless steel strainer (vener)
- 3M epoxy finish
- Ductile iron grate (standard)
- Vandal proof secured grate
- Trap seal primer tapping
- Backwater valve
- Acid resistant epoxy coating
- Galvanized top assembly
- All galvanized
- Non tilt grate
- Extension
- Bronze body
- Stainless steel body (type 304)
- Stainless steel body (type 316)
- PVC socket connection body
- ABS socket connection body
- 2", 3", 4" deep seal trap

### SUFFIX

- 1
- 3
- 3M
- 4
- 6
- 7
- 8
- 11
- 12
- 13
- 14
- 15
- 27
- 28
- 29
- 30
- 31
- 32
- Closure plug
- Underdeck clamp
- Sump receiver
- Lacquered cast iron funnels
- Threaded side outlet
- Client logo
- No hub side outlet
- No hub outlet
- Less membrane clamp, Delete
- Round 4" funnel
- Round 6" funnel
- Oval 4" x 9" funnel
- 6" x 3" x 1" funnel
- Push on outlet
- Threaded outlet
- Inside caulk outlet
- Non adjustable top
- Extended wide elastomeric flange

### SUFFIX

- 34
- 40
- 41
- 50
- 90
- 95
- 90NH (standard)
- C
- F4
- F6
- G
- J
- P
- T
- X
- Y
- Z

Job Name: _____	Page No: _____
Section No: _____	Contractor: _____
Schedule No: _____	Purchase Order No: _____