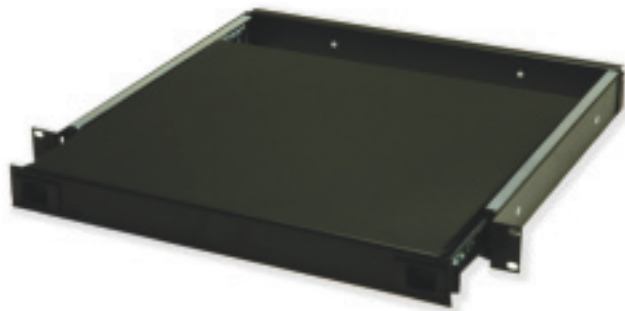




# AUDIO VIDEO METALS



## SLIDING SHELF

The sliding shelf features high quality ball bearing slides, two latches to prevent shelf from extending at unwanted times. 50 pound weight capacity and fits in one rack space.

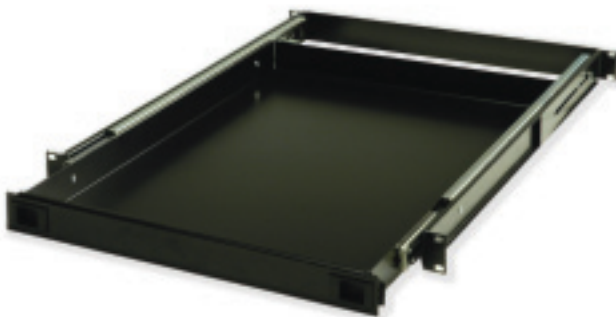
### APPLICATION

Turntables, drum machines, mounting of items not equipped with rack ears.

### FEATURES

- 16 ga. CRS with durable black powder coat finish.
- 100 lbs. Weight capacity.
- Two flush - mount, spring - loaded latches prevent unit form extending. Order 9040 w/o latch.
- Full 14" extension.
- Ball bearing drawer slides with release mechanism.
- Fits into one rack space.
- Telescopic support mounts to side of rack.
- The 9041 shelf can also be used as a 'one space' drawer (no lid available).

CODE	DESCRIPTION	RACK SPACES	HEIGHT	TOTAL WIDTH	SHELF WIDTH	DEPTH	WEIGHT (LBS)	FINISH	MATERIAL
9040	Sliding shelf	1	1.75"	19"	17.44"	14.63"	7.3	black powder coat	16 ga. CRS
9041	Sliding shelf	1	1.75"	19"	17.44"	14.63"	7.3	black powder coat	16 ga. CRS



Shown as a 1 space drawer.

## DEEP SLIDING SHELF

The deep sliding shelf offers greater depth plus all of the same features as the 9041 sliding shelf: high quality ball bearing slides, two latches to prevent shelf from extending at unwanted times, and 100 pound weight capacity.

### APPLICATIONS

VCR's, BETA CAMS, monitors, mounting of deeper and heavier items not equipped with rack ears.

### FEATURES

- 16 ga. CRS with durable black powder coat finish.
- 100 lbs. weight capacity.
- Two flush - mount, spring - loaded latches prevent unit from extending.
- Full 20" extension.
- Ball bearing drawer slides with release mechanism.
- Fits into one rack space.
- Telescopic support mounts to rear rack rail.
- The 9042 shelf can also be used as a 'one space' drawer (no lid available).

CODE	DESCRIPTION	RACK SPACES	HEIGHT	TOTAL WIDTH	SHELF WIDTH	DEPTH	WEIGHT (LBS)	FINISH	MATERIAL
9042	deep sliding shelf	1	1.75"	19"	17.44"	24.00"	13	black powder coat	16 ga. CRS